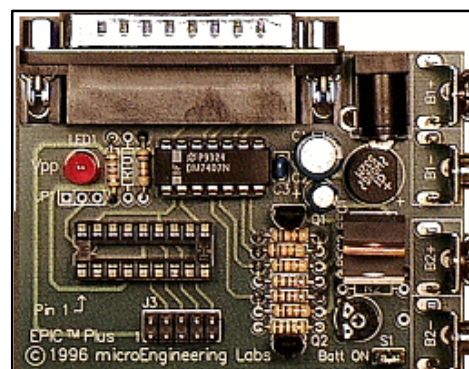




- Low Cost PIC Programmer
- Runs within Windows or DOS
- Integrates within MPLAB
- Wide Range ZIF adapters for Packages
- Power Supply 12Vac or 2 X PP3 batteries
- Software Upgradeable for future PIC Micros
- Includes Free Macro Assembler



### Programmer Device List

PIC12XXX	PIC14XXX	PIC16C5X	PIC16C505	PIC16XXX	PIC17XXX	PIC18XXX
✓	✓	x	✓	✓	✓	✓

The EPICA can program all new Flash devices

### Description

The pocket-sized EPIC Plus Programmer quickly and easily programs PIC microcontrollers.

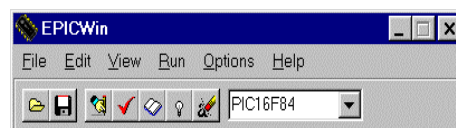
Supplied ready to operate, the basic programmer includes an 18-pin ZIF socket for programming 8-and 18-pin PICmicros. In order to accommodate the many device packages, the programmer has a 10pin Expansion header to connect a ZIF adaptors.

The EPIC Plus Programmer is software upgradeable for future PIC micros. It includes PC software and a free macro assembler that operates with Microchip assembler or with "C" or "PIC Basic".

The Programmer requires two 9-volt PP3 batteries or an AC adapter. Communication to the host PC is via a standard PC parallel printer port.

### Software

Along with the original DOS programming software, the EPIC Plus Programmer now includes Windows 95/NT programming software. This software supports all the latest mid-range PIC micros. It also adds the capability to read a device and save the data to a .HEX file.



### ZIF Adapters

Part No.	Description
MEL-EPICA	PIC Programmer
MEL-4028Z	40/28pin ZIF Socket
MEL-8SOIC	8pin SOIC Adaptor
MEL-18SOIC	18pin SOIC Adaptor
MEL-28SOIC	28pin SOIC Adaptor
MEL-44MQFP	44 Pin MQFP Adapter
MEL-44PLCC	44 Pin PLCC Adapter
MEL-68PLCC	68 Pin PLCC Adapter
MEL-1868PLCC	PIC18C6xx 68pin PLCC Adaptor
MEL-1884PLCC	PIC18C8xx 84pin PLCC Adaptor

