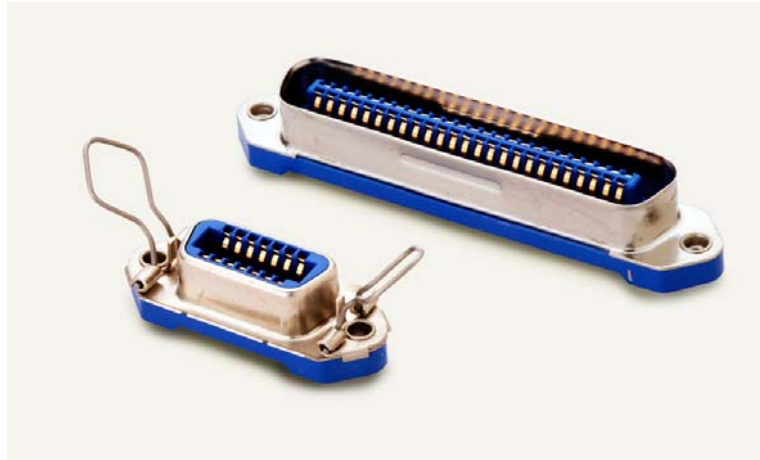


Straight Solder DIP Termination Connectors

57GE Series



FEAURES

- 57GE series is straight DIP termination connectors which shielded the interface for ESD protection.
- Mounting height is 6.9mm from PCB surface. It is same mounting height as our D-sub straight DIP termination connectors(17JE series).
- Cantilever contact design
- Intermatable with each 57, 57F, 57FE, 57JE series connectors.
- 10 Type (Rack and Panel Mounting Plug) • 20 Type (Rack and Panel Mounting Receptacle)
- 40 Type (Interface Receptacle)

SPECIFICATIONS

Rated Voltage	500V AC (r.m.s.)
Rated Current	3A / Contact
Dielectric Withstanding Voltage	1200V AC (r.m.s.) at 1 minute
Insulation Resistance	1000M Ω (min.) at 500V DC
Contact Resistance	35m Ω (max.)
Operating Temperature	-55°C~ 105°C

MATERIAL/FINISH

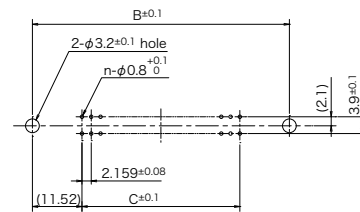
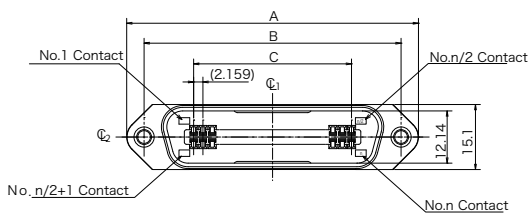
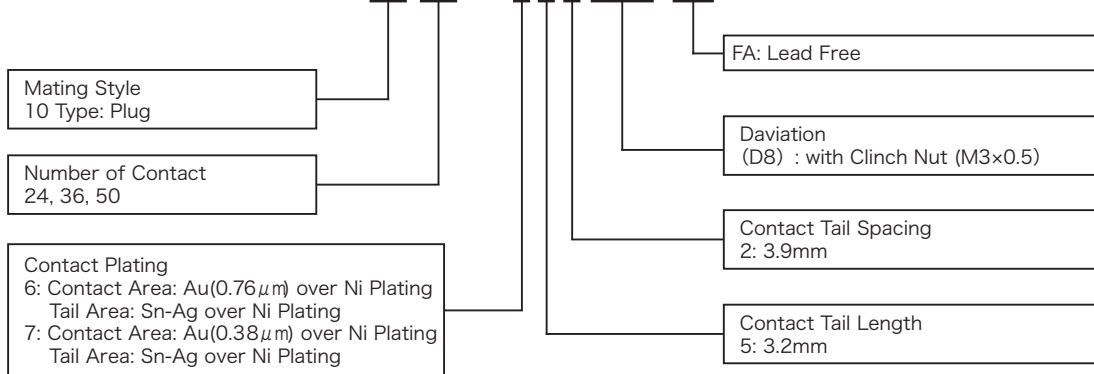


ITEM	MATERIAL/FINISH
Insulator	PBT Resin(UL94V-0) / Blue or Black
Shell	Steel or Brass / Ni Plating
Contact	Copper Alloy / Au over Ni Plating
Bail Lock	Stainless Steel(40 Type)

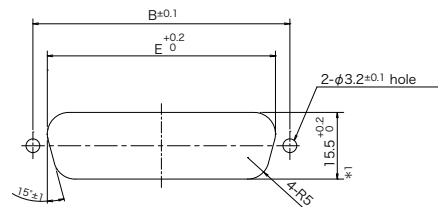
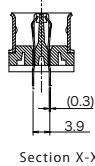
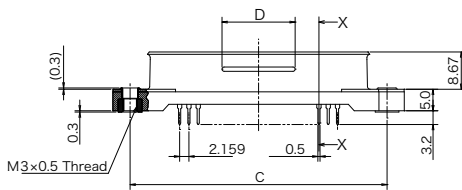
© Specifications and/or dimenssions in this catalogue are subject to change without notice.
Your catalogue checking the latest specifications with our drawings would be highly appreciated.

▶ 10 Type Rack and Panel Mounting Plug

57GE-10360-752(D8)-FA

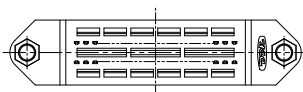


PCB Mounting Dimensions
PCB Thickness=1.6±0.19mm



※ 1 : When the mating connector is 57F or 57FE series, the size ※1 is 16.20^{±0.1}

Panel Mounting Dimensions(Rear Mounting)
Applicable Panel Thickness=1.6mm(max.)

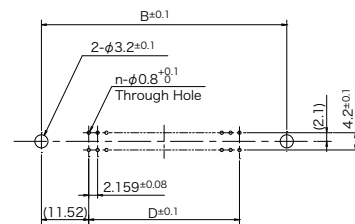
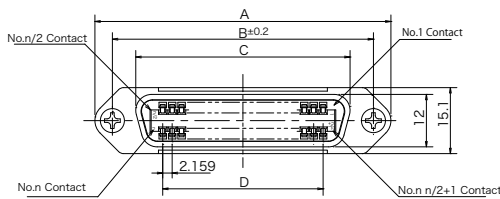
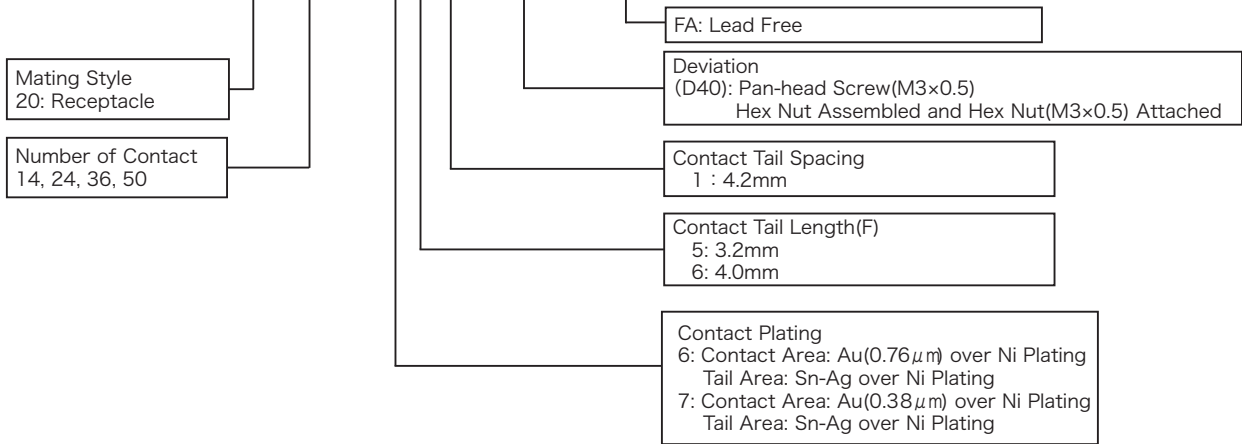


Part Number	Number of Contact	A	B	C	D	E
57GE-10240-□ 52 (D8) -FA	24	54.78	46.78	23.749	17.0	40.10
57GE-10360-□ 52 (D8) -FA	36	67.74	59.74	36.703	17.0	53.00
57GE-10500-□ 52 (D8) -FA	50	82.85	74.85	51.816	17.0	68.20

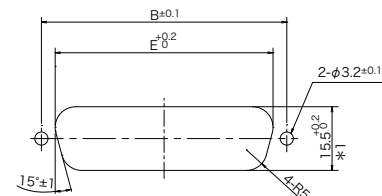
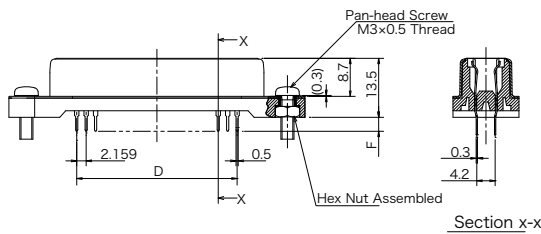
© Specifications and/or dimensions in this catalogue are subject to change without notice.
Your catalogue checking the latest specifications with our drawings would be highly appreciated.

▶ 20 Type Rack and Panel Mounting Receptacle

57GE-20360-751 (D40)-FA

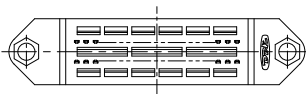


PCB Mounting Dimensions
Applicable PCB Thickness=1.6±0.19mm



*1 : When the mating connector is 57F or 57FE series, the size *1 is 16.20^{+0.2}

Panel Mounting Dimensions (Rear Mounting)
Applicable Panel Thickness =1.60mm(max)

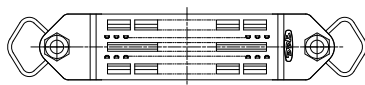
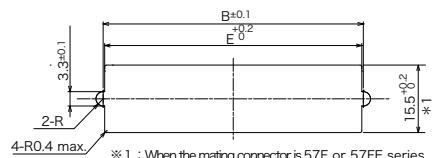
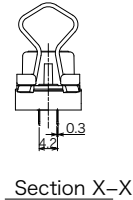
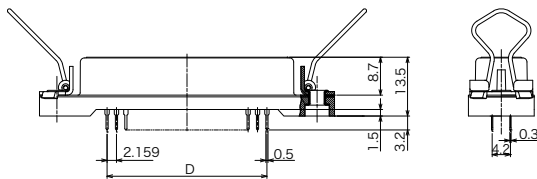
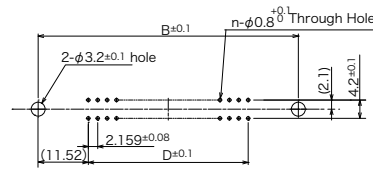
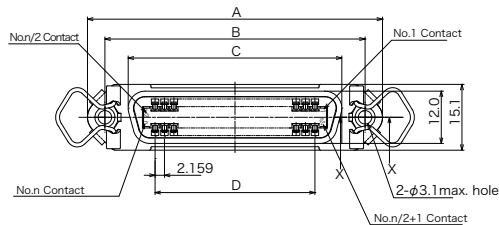
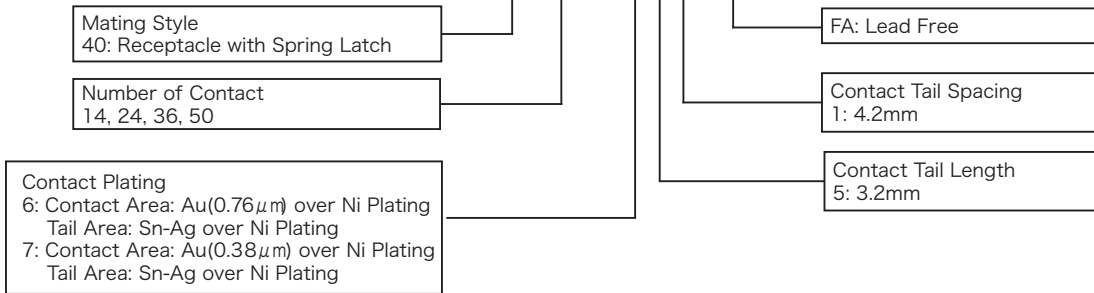


Part Number	Number of Contact	A	B	C	D	E
57GE-20140-□□1 (D40) -FA	14	44.00	36.00	25.40	12.954	29.30
57GE-20240-□□1 (D40) -FA	24	54.78	46.78	36.20	23.749	40.10
57GE-20360-□□1 (D40) -FA	36	67.74	59.74	49.00	36.703	53.00
57GE-20500-□□1 (D40) -FA	50	82.85	74.85	64.20	51.816	68.20

© Specifications and/or dimensions in this catalogue are subject to change without notice.
Your catalogue checking the latest specifications with our drawings would be highly appreciated.

▶ 40 Type Interface Receptacle

57GE-40360-751-FA



Part Number	Number of Contact	A	B	C	D	E
57GE-40140-□ 51-FA	14	44.00	36.00	25.4	12.954	35.30
57GE-40240-□ 51-FA	24	54.78	46.78	36.2	23.749	46.08
57GE-40360-□ 51-FA	36	67.74	59.74	49.0	36.703	59.04
57GE-40500-□ 51-FA	50	82.85	74.85	64.2	51.816	74.15

▶ 40 Type Interface Receptacle with Board Lock

57GE-40360-751 (D15)-FA

Mating Style
40: Receptacle with Spring Latch

Number of Contact
14, 24, 36, 50

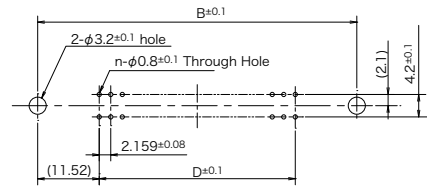
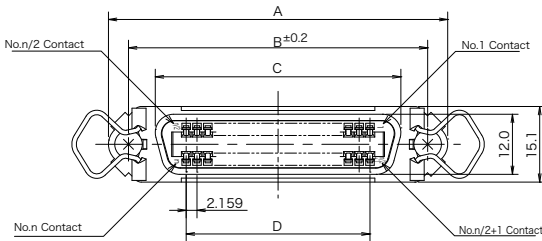
Contact Plating
6: Contact Area: Au(0.76μm) over Ni Plating
Tail Area: Sn-Ag over Ni Plating
7: Contact Area: Au(0.38μm) over Ni Plating
Tail Area: Sn-Ag over Ni Plating

FA: Lead Free

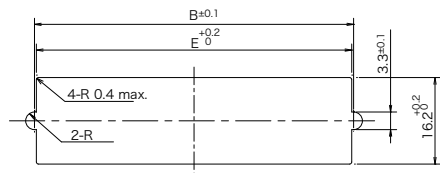
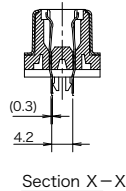
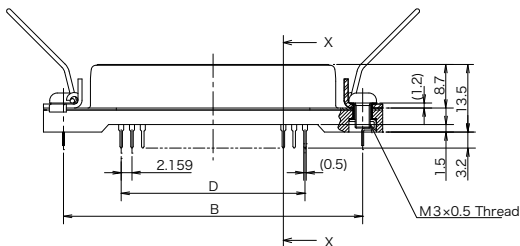
Deviation
(D15): with Board Lock
Pan-head Screw Assembled

Contact Tail Spacing
1: 4.2mm

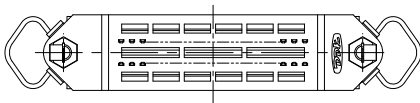
Contact Tail Length
5: 3.2mm



PCB Mounting Dimensions
Applicable PCB Thickness=1.6±0.19mm



Panel Mounting Dimensions(Rear Mounting)
Applicable Panel Thickness=1.6mm max.



Part Number	Number of Contact	A	B	C	D	E
57GE-40140-□ 51 (D15) -FA	14	44.00	36.00	25.4	12.954	35.30
57GE-40240-□ 51 (D15) -FA	24	54.78	46.78	36.2	23.749	46.08
57GE-40360-□ 51 (D15) -FA	36	67.74	59.74	49.0	36.703	59.04
57GE-40500-□ 51 (D15) -FA	50	82.85	74.85	64.2	51.816	74.15

© Specifications and/or dimensions in this catalogue are subject to change without notice.
Your catalogue checking the latest specifications with our drawings would be highly appreciated.