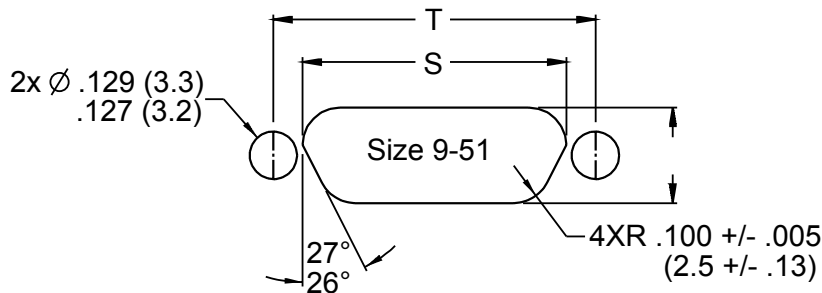


Immersion Proof



247-070
Immersion Proof Micro-D Filter Connector
Right Angle (90°) Printed Circuit Board Mount



RECOMMENDED PANEL CUTOUTS			
LAYOUT	S +.004 (.1) -.000 (0)	T +.003 (.08) -.003 (.08)	W +.004 (.1) -.000 (0)
9	.408 (10.4)	.565 (14.4)	.256 (6.5)
15	.558 (14.2)	.715 (18.2)	.256 (6.5)
21	.708 (18.0)	.865 (22.0)	.256 (6.5)
25	.808 (20.5)	.965 (24.5)	.256 (6.5)
31	.958 (24.3)	1.115 (28.3)	.256 (6.5)
37	1.108 (28.1)	1.265 (32.1)	.256 (6.5)

TABLE I: CAPACITOR ARRAY CODE CAPACITANCE RANGE	
CLASS	C - CIRCUIT (pF)
A	19,000 - 28,000
B	16,000 - 22,500
C	9,000 - 16,500
D	4,000 - 6,000
E	1,650 - 2,500
F	400 - 650
G	200 - 300

DIMENSIONAL TABLE							
SHELL SIZE	A +/- .005 (.13)	B +/- .005 (.13)	C +/- .003 (.08)	(D)	E +/- .005 (.13)	F +/- .005 (.13)	(G)
9P	1.135 (28.8)	.775 (19.7)	.565 (14.4)	.304 (7.7)	.298 (7.6)	.655 (16.6)	.185 (4.7)
9S	1.135 (28.8)	.775 (19.7)	.565 (14.4)	.358 (9.1)	.298 (7.6)	.655 (16.6)	.235 (6.0)
15P	1.285 (32.6)	.925 (23.5)	.715 (18.2)	.484 (12.3)	.298 (7.6)	.655 (16.6)	.185 (4.7)
15S	1.285 (32.6)	.925 (23.5)	.715 (18.2)	.534 (13.6)	.298 (7.6)	.655 (16.6)	.235 (6.0)
21P	1.435 (36.4)	1.075 (27.3)	.865 (22.0)	.634 (16.1)	.298 (7.6)	.655 (16.6)	.185 (4.7)
21S	1.435 (36.4)	1.075 (27.3)	.865 (22.0)	.684 (17.4)	.298 (7.6)	.655 (16.6)	.235 (6.0)
25P	1.535 (39.0)	1.175 (29.8)	.965 (24.5)	.734 (18.6)	.298 (7.6)	.655 (16.6)	.185 (4.7)
25S	1.535 (39.0)	1.175 (29.8)	.965 (24.5)	.784 (19.9)	.298 (7.6)	.655 (16.6)	.235 (6.0)
31P	1.685 (42.8)	1.325 (33.7)	1.115 (28.3)	.884 (22.5)	.298 (7.6)	.655 (16.6)	.185 (4.7)
31S	1.685 (42.8)	1.325 (33.7)	1.115 (28.3)	.934 (23.7)	.298 (7.6)	.655 (16.6)	.235 (6.0)
37P	1.835 (46.6)	1.475 (37.5)	1.265 (32.1)	1.034 (26.3)	.298 (7.6)	.655 (16.6)	.185 (4.7)
37S	1.835 (46.6)	1.475 (37.5)	1.265 (32.1)	1.084 (27.5)	.298 (7.6)	.655 (16.6)	.235 (6.0)

APPLICATION NOTES

- Material/ Finish:
 Shells - Aluminum Alloy / See P/N Development for Plating
 Insulators - LCP / N.A.
 Contacts - Copper Alloy / Gold Plated
 O-Rings - Fluorosilicone
- Assembly to be identified with Glenair's name, part number, date code, and pin 1 identification.
- Performance Data per MIL-DTL-835613
- Interface Dimensions per MIL-DTL-83513
- Assembly Supplied with 2 Rear Panel Mount JackPosts for 1/16 Thick Panel
- Termination Footprint per Glenair CBR
 (see Glenair Micro-D catalog or www.glenair.com)
- Plug Assemblies Supplied with EMI Ground Spring.
- Each Assembly to be Supplied with O-Ring Installed.
- All Contacts to have Identical Filter Value. Other Filter Arrangements Available - Contact Factory.
- DWV - 100 VDC Min.
- Insulation Resistance: 5000 MegOhms Min. at 200 VDC
- Metric dimensions (mm) are indicated in parentheses.

