

1SS355

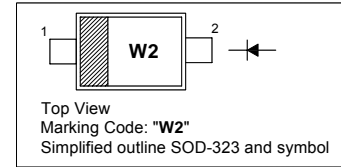
SILICON EPITAXIAL PLANAR SWITCHING DIODES

FEATURES

- Small plastic package suitable for surface mounted design
- High reliability with high surge current handling capability

PINNING

PIN	DESCRIPTION
1	Cathode
2	Anode



APPLICATIONS

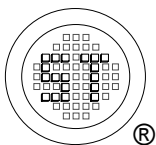
- High speed switching

Absolute Maximum Ratings ($T_a = 25\text{ }^\circ\text{C}$)

Parameter	Symbol	Value	Unit
Peak Reverse Voltage	V_{RM}	90	V
DC Reverse Voltage	V_R	80	V
Mean Rectifying Current	I_O	100	mA
Peak Forward Current	I_{FM}	225	mA
Surge Current (1 s)	I_{surge}	500	mA
Junction Temperature	T_j	125	$^\circ\text{C}$
Storage Temperature Range	T_{stg}	- 55 to + 125	$^\circ\text{C}$

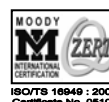
Electrical Characteristics ($T_a = 25\text{ }^\circ\text{C}$)

Parameter	Symbol	Max.	Unit
Forward Voltage at $I_F = 100\text{ mA}$	V_F	1.2	V
Reverse Current at $V_R = 80\text{ V}$	I_R	0.1	μA
Capacitance between Terminals at $V_R = 0.5\text{ V}$, $f = 1\text{ MHz}$	C_T	3	pF
Reverse Recovery Time at $V_R = 6\text{ V}$, $I_F = 10\text{ mA}$, $R_L = 100\text{ }\Omega$	t_{rr}	4	ns

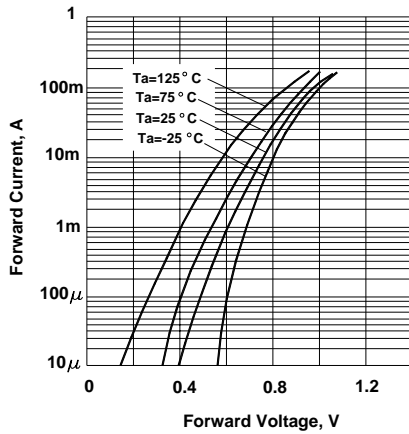


SEMTECH ELECTRONICS LTD.

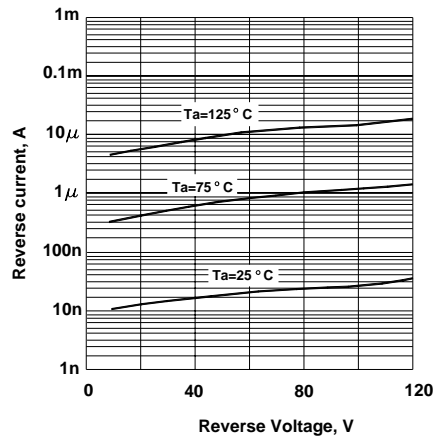
(Subsidiary of Sino-Tech International Holdings Limited, a company listed on the Hong Kong Stock Exchange, Stock Code: 724)



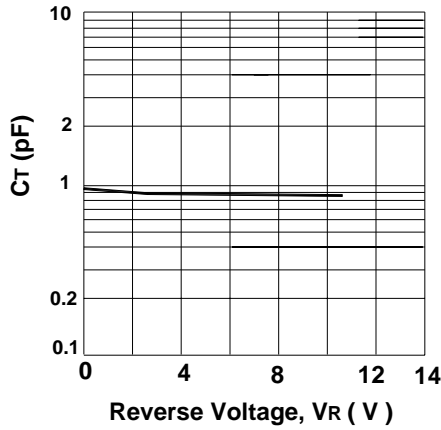
Forward Characteristics



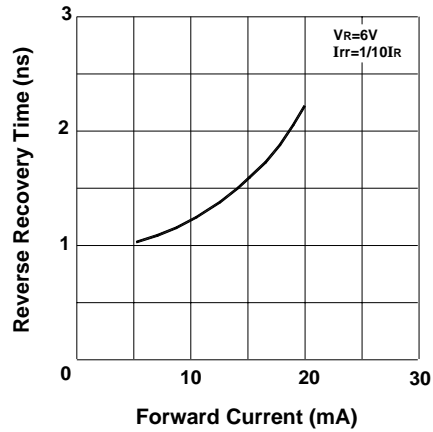
Reverse Characteristics



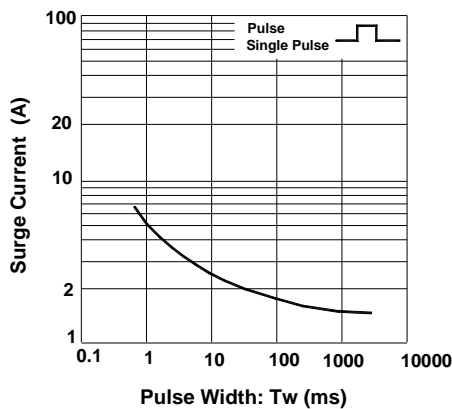
Capacitance between terminals characteristics



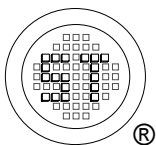
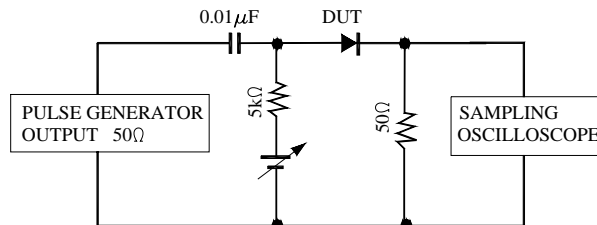
Reverse Recovery Time Characteristics



Surge Current Characteristics

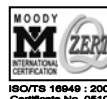


Reverse Recovery Time Measurement Circuit



SEMTECH ELECTRONICS LTD.

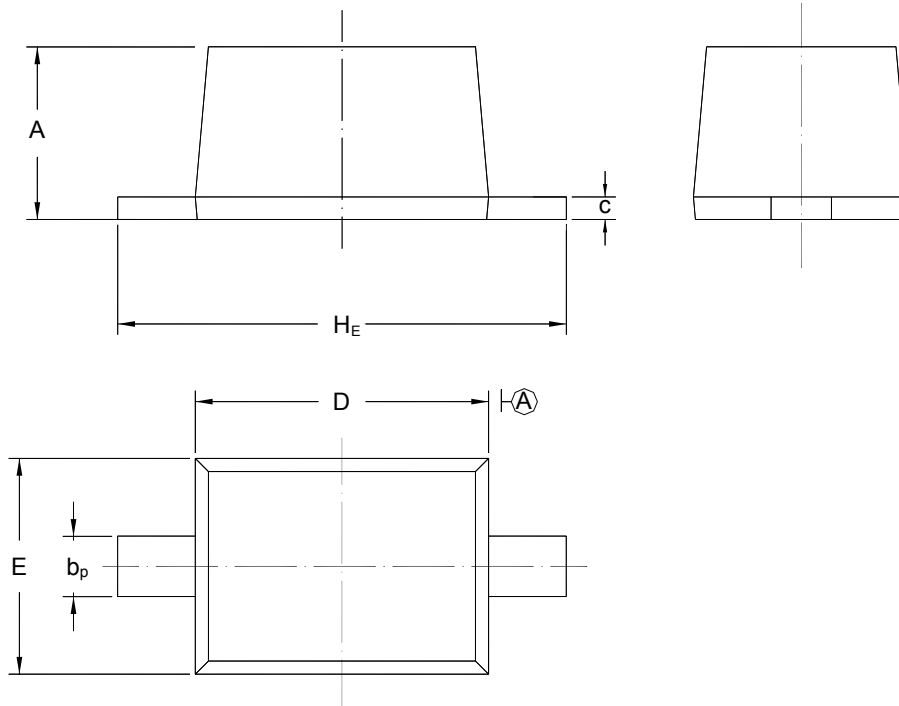
(Subsidiary of Sino-Tech International Holdings Limited, a company listed on the Hong Kong Stock Exchange, Stock Code: 724)



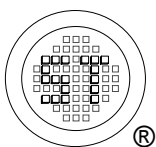
PACKAGE OUTLINE

Plastic surface mounted package; 2 leads

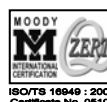
SOD-323



UNIT	A	b_p	C	D	E	H_E
mm	1.10 0.80	0.40 0.25	0.15 0.00	1.80 1.60	1.35 1.15	2.80 2.30



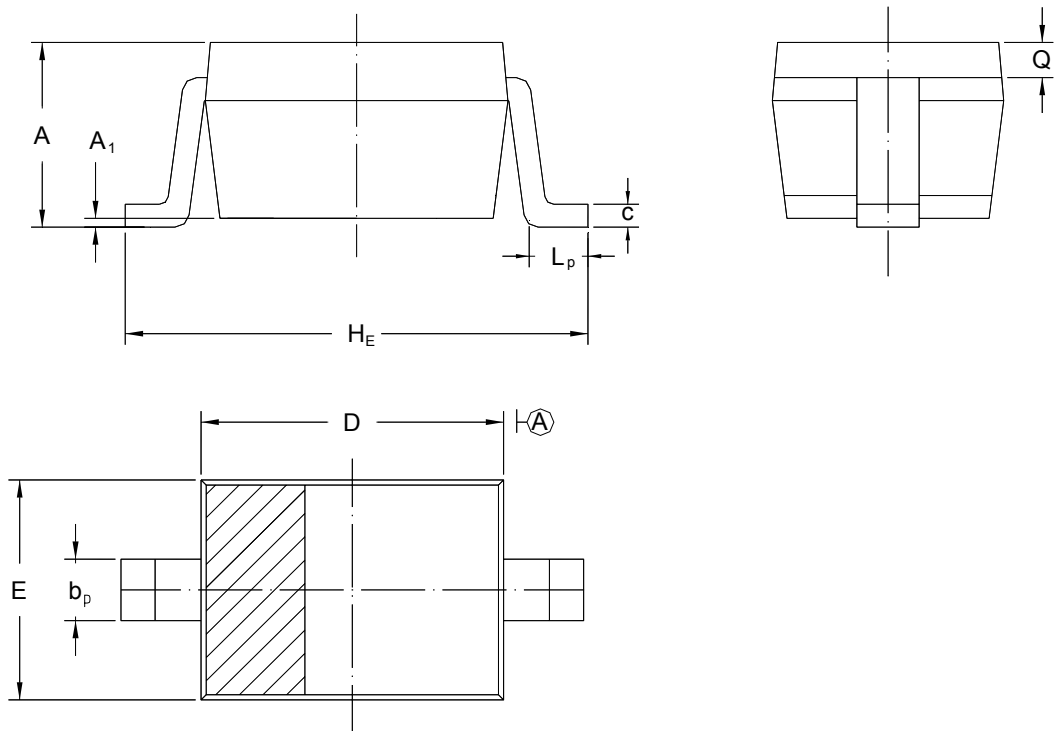
SEMTECH ELECTRONICS LTD.
 (Subsidiary of Sino-Tech International Holdings Limited, a company listed on the Hong Kong Stock Exchange, Stock Code: 724)



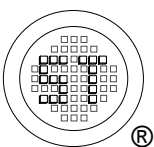
PACKAGE OUTLINE

Plastic surface mounted package; 2 leads

SOD-323



UNIT	A	A ₁	b _p	C	D	E	H _E	L _p	Q
mm	1.10 0.80	0.1 0	0.40 0.25	0.15 0.00	1.80 1.60	1.35 1.15	2.80 2.30	0.50 0.10	0.15 REF.



SEMTECH ELECTRONICS LTD.
 (Subsidiary of Sino-Tech International Holdings Limited, a company listed on the Hong Kong Stock Exchange, Stock Code: 724)

