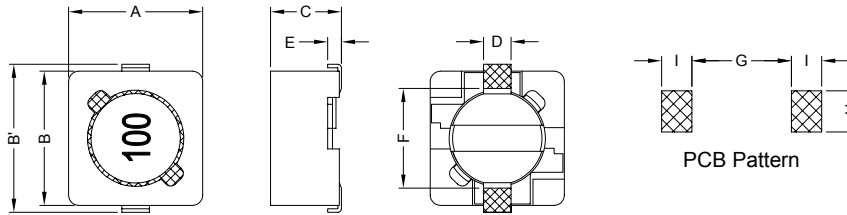


### 1. PART NO. EXPRESSION :

S D C 0 6 0 2 - 1 0 1 M F  
 (a) (b) (c) (d)(e)

- (a) Series code
- (b) Dimension code
- (c) Inductance code : 101 = 100uH
- (d) Tolerance code : M = ±20%
- (e) F : Lead Free

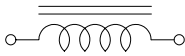
### 2. CONFIGURATION & DIMENSIONS :



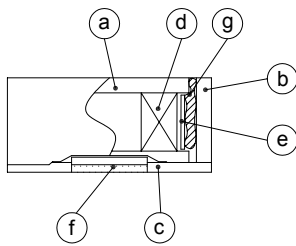
Unit:m/m

A	B	B'	C	D	E	F	G	H	I
6.20±0.30	5.90±0.30	6.60±0.30	3.00 Max.	1.50 Ref.	0.60 Ref.	4.60 Ref.	4.6 Ref.	1.9 Ref.	1.4 Ref.

### 3. SCHEMATIC :



### 4. MATERIALS :



- (a) Core : DR Ferrite Core
- (b) Core : RI Ferrite Core
- (c) Base : LCP
- (d) Wire : Enamelled Copper Wire
- (e) Tape : Mylar Tape
- (f) Terminal : Tinned Copper Plate
- (g) Adhesive : Epoxy

### 5. GENERAL SPECIFICATION :

- a) Temp. rise : 40°C Max.
- b) Rated current : Base on temp. rise &  $\Delta L/L0A = 25\%$  Max.
- c) Operating temp. : -40°C to +85°C



**RoHS Compliant**

NOTE : Specifications subject to change without notice. Please check our website for latest information.

05.05.2008



**SUPERWORLD ELECTRONICS (S) PTE LTD**

## 6. ELECTRICAL CHARACTERISTICS :

Part No.	Inductance ( $\mu$ H)	Test Frequency	RDC ( $\Omega$ ) Max.	IDC (A) Max.
SDC0602-2R9NF	2.9 <sup>+40%</sup> <sub>-20%</sub>	7.96MHz / 0.25V	0.068	1.94
SDC0602-4R0NF	4.0 <sup>+40%</sup> <sub>-20%</sub>	7.96MHz / 0.25V	0.080	1.63
SDC0602-5R5NF	5.5 <sup>+40%</sup> <sub>-20%</sub>	7.96MHz / 0.25V	0.096	1.40
SDC0602-100MF	10 $\pm$ 20%	1KHz / 0.25V	0.15	1.10
SDC0602-120MF	12 $\pm$ 20%	1KHz / 0.25V	0.20	1.00
SDC0602-150MF	15 $\pm$ 20%	1KHz / 0.25V	0.23	0.90
SDC0602-180MF	18 $\pm$ 20%	1KHz / 0.25V	0.27	0.80
SDC0602-220MF	22 $\pm$ 20%	1KHz / 0.25V	0.34	0.74
SDC0602-270MF	27 $\pm$ 20%	1KHz / 0.25V	0.38	0.66
SDC0602-330MF	33 $\pm$ 20%	1KHz / 0.25V	0.45	0.59
SDC0602-390MF	39 $\pm$ 20%	1KHz / 0.25V	0.49	0.54
SDC0602-470MF	47 $\pm$ 20%	1KHz / 0.25V	0.69	0.50
SDC0602-560MF	56 $\pm$ 20%	1KHz / 0.25V	0.78	0.46
SDC0602-680MF	68 $\pm$ 20%	1KHz / 0.25V	1.07	0.42
SDC0602-820MF	82 $\pm$ 20%	1KHz / 0.25V	1.21	0.38
SDC0602-101MF	100 $\pm$ 20%	1KHz / 0.25V	1.39	0.34
SDC0602-121MF	120 $\pm$ 20%	1KHz / 0.25V	1.90	0.31
SDC0602-151MF	150 $\pm$ 20%	1KHz / 0.25V	2.18	0.28
SDC0602-181MF	180 $\pm$ 20%	1KHz / 0.25V	2.77	0.26
SDC0602-221MF	220 $\pm$ 20%	1KHz / 0.25V	3.12	0.23
SDC0602-271MF	270 $\pm$ 20%	1KHz / 0.25V	4.38	0.22
SDC0602-331MF	330 $\pm$ 20%	1KHz / 0.25V	4.94	0.19



RoHS Compliant

NOTE : Specifications subject to change without notice. Please check our website for latest information.

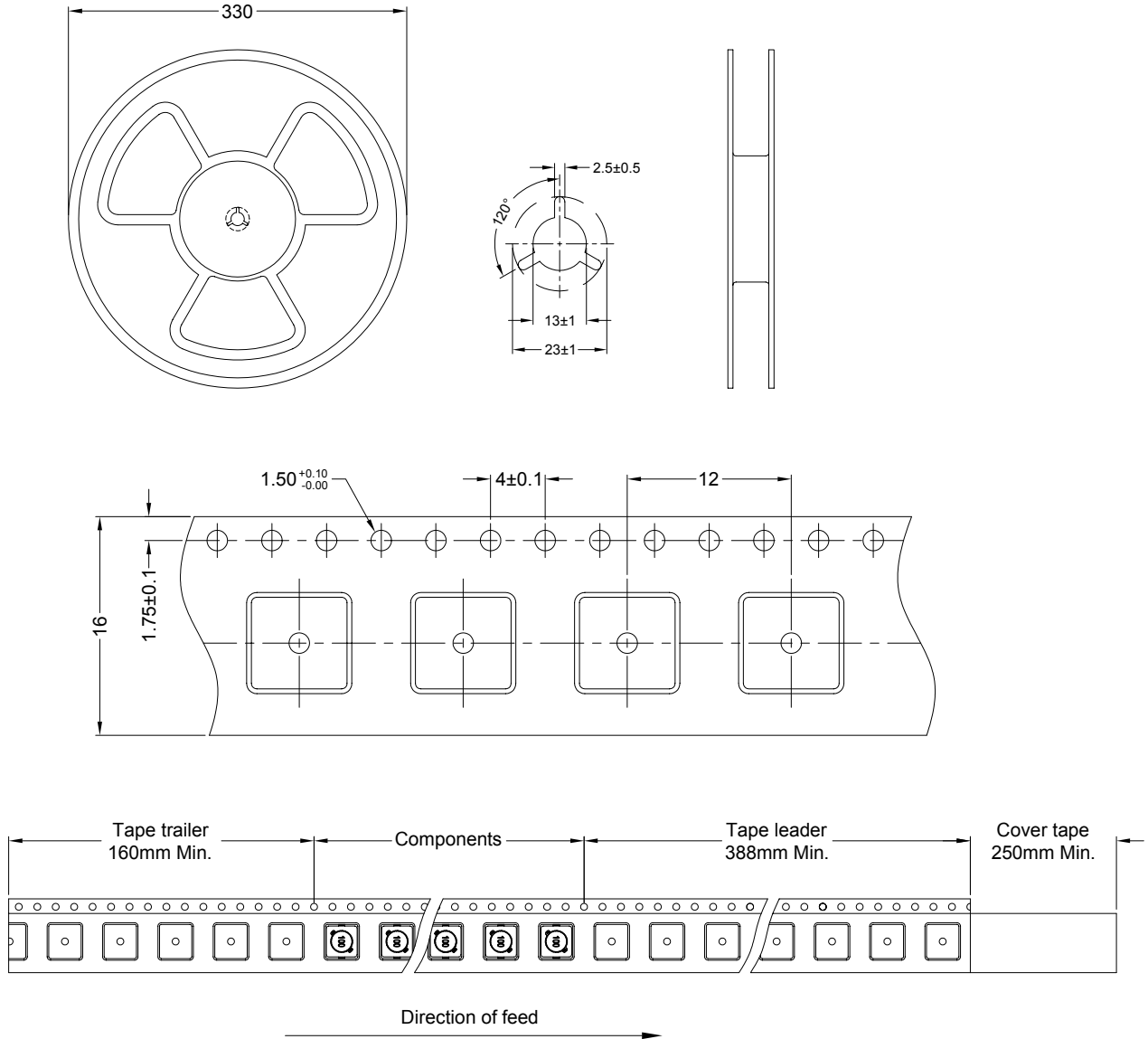
05.05.2008



SUPERWORLD ELECTRONICS (S) PTE LTD

## 7. PACKAGING INFORMATION : ( Unit : mm )

### 7-1. Reel & Tape Dimension



### 7-2. Quantity & G.W. per package

SERIES	INNER : REEL			OUTER : CARTON		
	Q'TY (PCS)	G.W. (Kg)	STYLE	Q'TY (PCS)	G.W. (Kg)	SIZE (cm)
SDC0602	1500	0.65	13-16	24000	15	36 x 36 x 40



**RoHS Compliant**

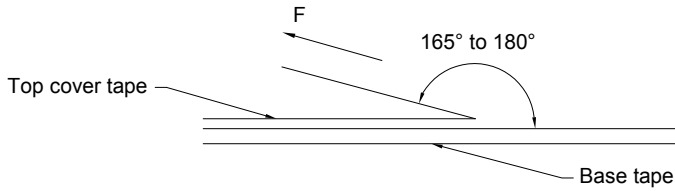
NOTE : Specifications subject to change without notice. Please check our website for latest information.

05.05.2008



**SUPERWORLD ELECTRONICS (S) PTE LTD**

### 7-3. Tearing Off Force



The force for tearing off cover tape is 10 to 60 grams in the arrow direction.



**RoHS Compliant**

NOTE : Specifications subject to change without notice. Please check our website for latest information.

05.05.2008



**SUPERWORLD ELECTRONICS (S) PTE LTD**