



Features

- Frequency Range: 10~1000MHz
- Active Bias Design Supply Temperature Compensation
- Standard Hermetic Package
- Operating Temperature Range: -55°C ~ +85°C

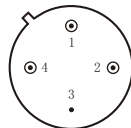
Specifications (50 Ω, V_{CC} = +12V, T_A = -55°C ~ +85°C)

Parameter	Symbol	Unit	Guaranteed	Typical
Frequency Range	f _L ~f _H	MHz	10~1000	—
Gain	G _p	dB	≥18.0	19.5
Gain Flatness	ΔG _p	dB	≤±1.0	±0.5
Noise Figure	F _n	dB	≤3.5Δ	3.0
Input VSWR	VSWR _i	—	≤2.0:1	1.5:1
Output VSWR	VSWR _o	—	≤2.0:1	1.8:1
Output Power @ 1dB Compression	P ₋₁	dBm	≥0 * Δ	1.0
DC Current	I _{CC}	mA	—	35

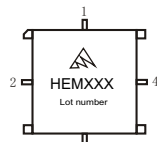
“*”f=800MHz; “Δ” T_A=24±1°C;

Maximum Rating

DC Voltage : +15VDC
 RF Input: +10dBm
 Storage Temp: +125°C



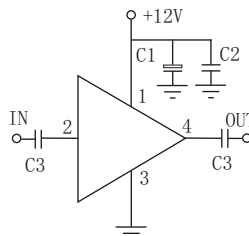
TO-8A



SMA-8C

Application Notes

1. Typical application shown as right, C₁=3.3~22 μF; C₂=3300~6800pF; C₃=1000pF;
2. Interchanged directly with A64 from W-J Company;
3. See assembly section for mounting information
4. Connectorized package(SMA-1) available



Typical Curves

