

## INTRODUCTION

Molex's new 0.30mm Pitch FPC connector with cable tab feature provides superior cable retention and alignment.

The connector includes a notch in the solder nail that accepts cable tabs (or "ears"), which provide extremely strong protection from the cable being pulled out.

The connector also includes a low insertion force (LIF) terminal design. This feature, along with the cable tabs, keeps the cable firmly in place during insertion and allows operators to use both hands to more easily engage the actuator.

Other features include friction locks on both ends of the actuator that provide strong upward force cable retention, while keeping the actuator closed during shipping in embossed tape. This new version is available in various circuit sizes from 21-51.

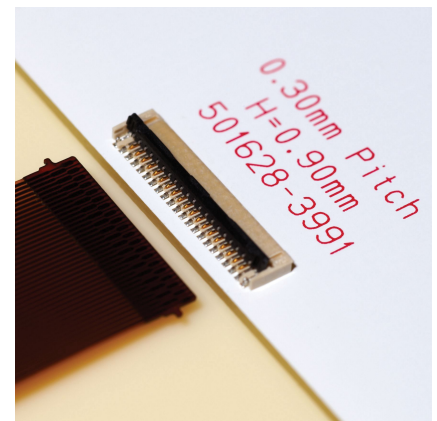


## 0.30mm (.012") Pitch SMT FPC Connector, 0.90mm (.035") Height, Narrow Width, Cable-Tab Type

### Series 501628

#### Specifications:

- Current: 0.2A
- Voltage: 50V
- Contact Plating: Gold
- Underplating: Nickel
- Contact Resistance: 40 milliohms max.
- Insulation Resistance: 50 Megohms min.
- Dielectric Withstanding Voltage: 250V AC
- Durability: 10 cycles
- Flammability: UL 94V-0
- Packaging: Embossed Tape
- Operating Temperature: -25 to +85°C



#### Features

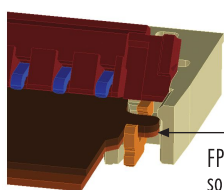
- FPC cable tabs
- LIF FPC cable-hold feature
- 3.10mm (.122") width
- Friction actuator lock
- Nickel barrier plating

#### Benefits

- Cable retention and alignment
- Additional cable retention and alignment
- Space savings
- Prevents actuator from opening
- Provides protection against flux wicking

### Cable-Tab Feature

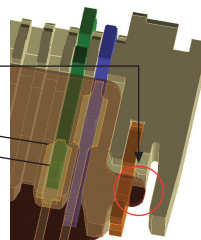
Provides cable retention and alignment



FPC cable tab fits into notch of solder nail and prevents cable from being pulled out.

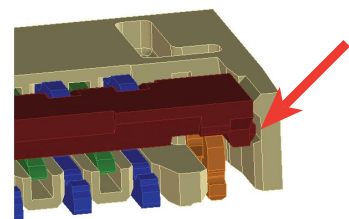
Tab placement assures cable is properly aligned for secure electrical contact

0.31mm  
Wipe Length



### Actuator Lock Mechanism

A strong friction lock on both ends of the actuator locks it firmly in place and provides a "click" sound when engaged. Actuator stays shut inside embossed tape packaging.



## MARKETS AND APPLICATIONS

- Mobile phones
- PDAs
- Other compact, mobile devices

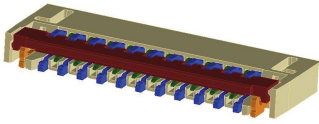


## ORDERING INFORMATION



**0.30mm (.012") Pitch  
SMT FPC Connector,  
0.90mm (.035") Height,  
Narrow Width,  
Cable-Tab Type**

**Series 501628**



Order Number	Circuits	Height	Width
501628-2191	21	0.90mm (.035")	3.10mm (.122")
501628-2791	27		
501628-3191	31		
501628-3391	33		
501628-3591	35		
501628-3991	39		
501628-4591	45		
501628-5191	51		

**molex**<sup>®</sup>  
one company › a world of innovation

**Americas Headquarters**  
2222 Wellington Ct,  
Lisle, Illinois 60532 USA  
Tel: 1-800-78MOLEX  
amerinfo@molex.com

**Asia Pacific North Headquarters**  
Yamato, Kanagawa, Japan  
Tel: 81-46-265-2325  
apninfo@molex.com

**Asia Pacific South Headquarters**  
Jurong, Singapore  
Tel: 65-6-268-6868  
apsinfo@molex.com

**European Headquarters**  
Munich, Germany  
Tel: 49-89-413092-0  
euroinfo@molex.com

**Corporate Headquarters**  
2222 Wellington Ct,  
Lisle, Illinois 60532 USA  
Tel: 630-969-4550

Visit our website at [www.molex.com](http://www.molex.com)