

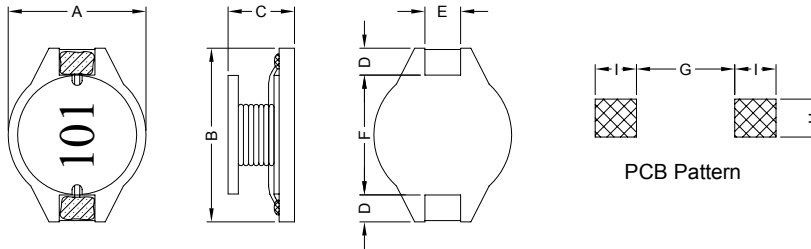
### 1. PART NO. EXPRESSION :

PDB1507101MZ F

(a) (b) (c) (d)(e)(f)

- (a) Series code
- (b) Dimension code
- (c) Inductance code : 101 = 100uH
- (d) Tolerance code : M = ±20%
- (e) X, Y, Z : Standard part
- (f) F : Lead Free

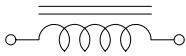
### 2. CONFIGURATION & DIMENSIONS :



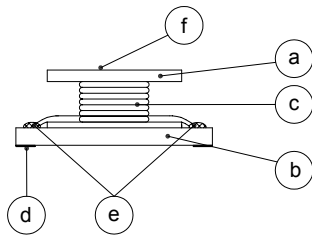
Unit:m/m

A	B	C	D	E	F	G	H	I
15.0±0.3	18.4±0.3	7.0±0.5	2.4±0.2	2.2±0.2	13.3±0.3	12.7 Ref.	2.8 Ref.	3.0 Ref.

### 3. SCHEMATIC :



### 4. MATERIALS :



- (a) Core : DR Ferrite Core
- (b) Base : LCP
- (c) Wire : Enamelled Copper Wire
- (d) Terminal : Tinned Copper Plate
- (e) Adhesive : Epoxy
- (f) Ink : Bon Margue

### 5. GENERAL SPECIFICATION :

- a) Temp. rise : 40°C Typ.
- b) Rated current : Base on temp. rise &  $\Delta L/L0A = 10\%$  Max.
- c) Storage temp. : -40°C to +125°C
- d) Operating temp. : -40°C to +85°C
- e) Resistance to solder heat : 260°C.10 secs



**RoHS Compliant**

NOTE : Specifications subject to change without notice. Please check our website for latest information.

01.05.2008



**SUPERWORLD ELECTRONICS (S) PTE LTD**

## 6. ELECTRICAL CHARACTERISTICS :

Part No.	Inductance ( $\mu$ H)	Q Ref.	Test Frequency (Hz)	SRF (MHz) Typ.	RDC (m $\Omega$ ) Max.	IDC (A)
PDB15071R0MZF	1.00 $\pm$ 20%	50	1V/100K	140.0	9	8.60
PDB15071R5MZF	1.50 $\pm$ 20%	50	1V/100K	110.0	12	7.50
PDB15072R2MZF	2.20 $\pm$ 20%	50	1V/100K	75.0	14	7.10
PDB15073R3MZF	3.30 $\pm$ 20%	60	1V/100K	70.0	18	6.20
PDB15075R6MZF	5.60 $\pm$ 20%	50	1V/100K	45.0	20	5.30
PDB1507100MZF	10.00 $\pm$ 20%	30	1V/100K	21.0	31	4.30
PDB1507150MZF	15.00 $\pm$ 20%	30	1V/100K	16.0	36	4.00
PDB1507220MZF	22.00 $\pm$ 20%	20	1V/100K	13.0	47	3.50
PDB1507330MZF	33.00 $\pm$ 20%	30	1V/100K	11.0	66	3.00
PDB1507470MZF	47.00 $\pm$ 20%	20	1V/100K	9.0	86	2.60
PDB1507680MZF	68.00 $\pm$ 20%	30	1V/100K	6.5	130	2.30
PDB1507101MZF	100.00 $\pm$ 20%	20	1V/100K	5.7	190	1.80
PDB1507151MZF	150.00 $\pm$ 20%	25	1V/100K	4.5	250	1.50
PDB1507221MZF	220.00 $\pm$ 20%	25	1V/100K	3.7	380	1.20
PDB1507331MZF	330.00 $\pm$ 20%	30	1V/100K	3.0	560	1.00
PDB1507471MZF	470.00 $\pm$ 20%	30	1V/100K	2.7	850	0.82
PDB1507681MZF	680.00 $\pm$ 20%	35	1V/100K	2.2	1100	0.72
PDB1507102MZF	1000.00 $\pm$ 20%	35	1V/100K	2.0	1800	0.56



RoHS Compliant

NOTE : Specifications subject to change without notice. Please check our website for latest information.

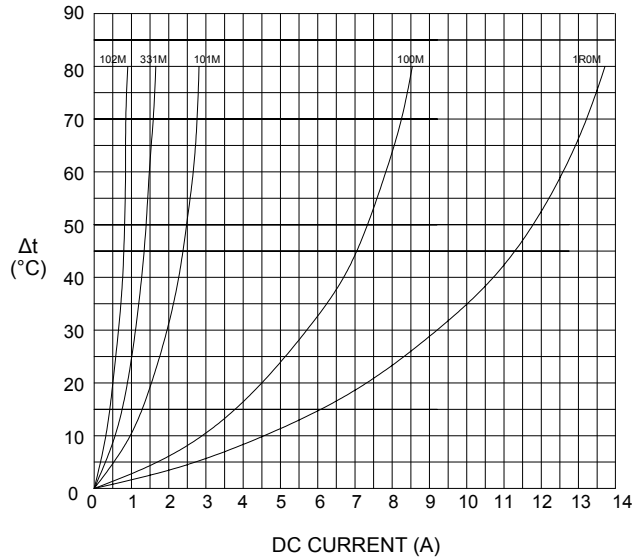
01.05.2008



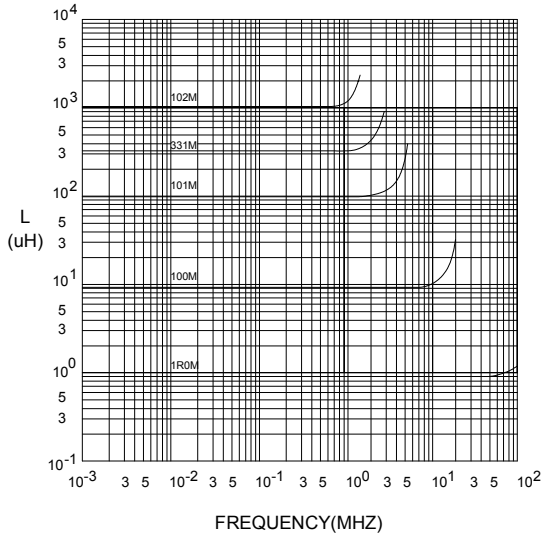
SUPERWORLD ELECTRONICS (S) PTE LTD

## 7. CHARACTERISTICS CURVES :

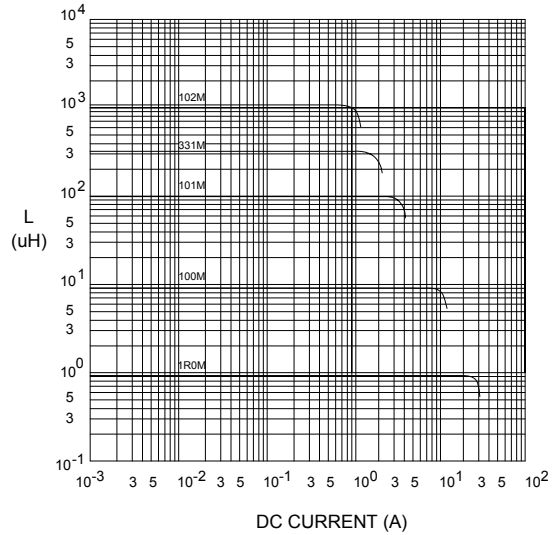
@ TEMP. RISE VS. DC SUPERPOSITION RESPONSE CURVE



@ INDUCTANCE VS. FREQUENCY RESPONSE CURVE



@ INDUCTANCE VS. DC SUPERPOSITION RESPONSE CURVE



NOTE : Specifications subject to change without notice. Please check our website for latest information.



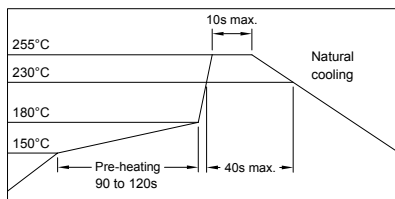
**RoHS Compliant**

01.05.2008



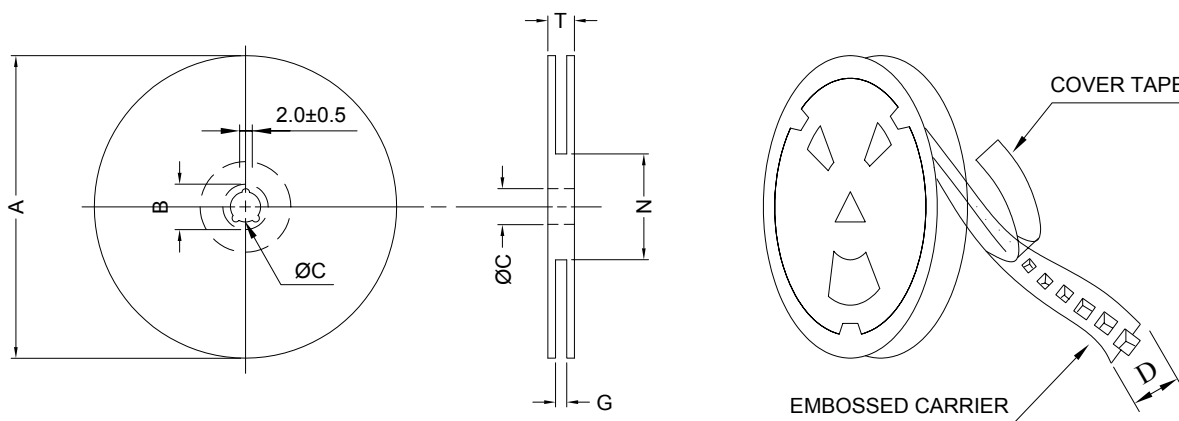
**SUPERWORLD ELECTRONICS (S) PTE LTD**

### RECOMMENDED SOLDERING CONDITIONS REFLOW SOLDERINGS

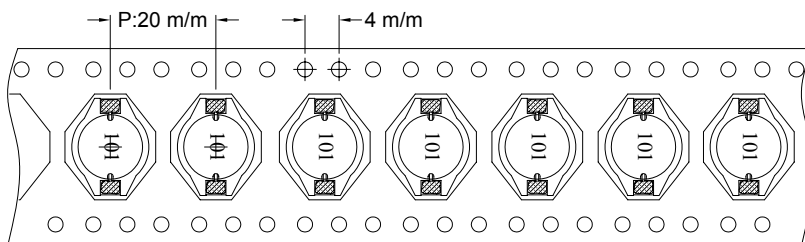


### 8. PACKAGING INFORMATION :

#### ( 1 ) CONFIGURATION



\* CARRIER TAPE WIDTH : D



#### ( 2 ) DIMENSIONS

Unit:m/m

STYLE	A	B	C	D	G	N	T
13-32	330	21±0.8	13±0.5	32	34 <sup>+0</sup>	100 <sup>-0</sup>	38.4

#### ( 3 ) Q'TY & G.W. PER PACKAGE

SERIES	INNER : REEL			OUTER : CARTON		
	Q'TY (PCS)	G.W. (gw)	STYLE	Q'TY (PCS)	G.W. (Kg)	SIZE (cm)
PDB1507	350	1610	13-32	1400	10.0	40 x 20 x 26



**RoHS Compliant**

NOTE : Specifications subject to change without notice. Please check our website for latest information.

01.05.2008



**SUPERWORLD ELECTRONICS (S) PTE LTD**

## 9. RELIABILITY AND TEST CONDITION :

TEST ITEM	SPECIFICATION	TEST CONDITION
SOLDERABILITY	MORE THAN 90% OF THE TERMINAL ELECTRODE SHALL BE COVERED WITH FRESH SOLDER.	PREHEAT : 125±25°C FOR 60 SECONDS SOLDER : 99%Sn/0.3%Ag/0.7%Cu OR EQUIVALENT SOLDER TEMP. : 245±5°C FLUX : ROSIN DIP TIME : 4±1 SECONDS
THERMAL SHOCK TEST  ( TEMP. CYCLE )	INDUCTANCE SHALL NOT CHANGE MORE THAN ±20%	ROOM TEMP. → -25±2°C 15 MINUTES → 30 MINUTES  ROOM TEMP. → 85±2°C 15 MINUTES → 30 MINUTES  TOTAL : 50 CYCLES
HUMIDITY RESISTANCE TEST		TEMPERATURE : 40±2°C HUMIDITY : 90 ~ 95% APPLIED CURRENT : PER SPEC. TIME : 500 HOURS
HIGH TEMP. RESISTANCE TEST		TEMPERATURE : 85±2°C APPLIED CURRENT : PER SPEC. TIME : 500 HOURS



**RoHS Compliant**

NOTE : Specifications subject to change without notice. Please check our website for latest information.

01.05.2008



**SUPERWORLD ELECTRONICS (S) PTE LTD**

**10. UL CARD :**

**OBMW2** **November 30, 2000**  
**Magnet Wire - Component**

**PACIFIC ELECTRIC WIRE & CABLE (SHENZHEN) CO LTD** **E201757**  
**607 BAOLONG INDUSTRIAL ESTATE LONGGANG, SHENZHEN**  
**GUANGDONG CHINA**

Mtl Dsg	BC	Coating Type	TC	ANSI Type	TI
<b>UEW/U</b>		<b>Polyurethane</b>	—	—	<b>130</b>
<b>PEW/U</b>		<b>Polyester</b>	—	<b>MW5-C</b>	<b>155°C</b>
<b>PEWH/U</b>		<b>Modified Polyester</b>	—	<b>MW30-C</b>	<b>180</b>
<b>PEW-NY/U</b>		<b>Polyester</b>	<b>Polyamide</b>	<b>MW24-C</b>	<b>155</b>
<b>HAI/U</b>		<b>Polyester(Amide)(Imide)</b>	<b>Polyamideimide</b>	<b>MW35,73</b>	<b>200</b>
<b>UEW-NY/U</b>		<b>Polyurethane</b>	<b>Polyamide</b>	<b>MW80-C</b>	<b>155</b>
				<b>MW28-C</b>	<b>130</b>

**Marking: Company name and material designation or marked designation on package or reel, and Recognized Component Mark.**

**See General Information Preceding These Recognitions**

**1/3/2001** **Underwriters Laboratories Inc.** **Card 1 of 2**

**SUMITOMO CHEMICAL CO LTD** **E54705 (M)**  
**5-33 KITAHAMA 4-CHOME CHUO-KO, OSAKA JAPAN**

Mtl Dsg	Col	Min Thk mm	UL94 Flame Class	Elec	RTI with Imp	Mech w/o Imp	H W I	H A I	H V R	D 4 5	C T I
Liquid crystal polyester (LCP), designated "EKONOL" or "SUMIKASUPER", furnished in the form of pellets, (Contd)											
E4008 , E400X	NC , BK	0.30	94V-0	130	130	130	—	—	—	—	—
		0.75	94V-0	130	130	130	3	4	—	—	—
		1.5	94V-0	130	130	130	2	4	—	—	—
E4008	NC , WT , BK	3.0	94V-0	130	130	130	1	4	0	5	4
		0.30	94V-0	130	130	130	—	—	—	—	—
		0.75	94V-0	220	180	220	3	4	—	—	—
E4010	NC , BK	1.5	94V-0	220	200	240	2	4	—	—	—
		3.0	94V-0	220	200	240	1	4	0	5	4
		0.30	94V-0	130	130	130	—	—	—	—	—
E400(Y)L , E4008L	NC , BK	0.75	94V-0	220	180	220	3	4	—	—	—
		1.5	94V-0	220	200	240	2	4	—	—	—
		3.0	94V-0	220	200	240	1	4	0	5	4
E4810	NC , BK	0.30	94V-0	130	130	130	—	—	—	—	—
		0.75	94V-0	130	130	130	3	4	—	—	—
		1.5	94V-0	130	130	130	2	4	—	—	—
		3.0	94V-0	130	130	130	1	4	0	5	4
		0.30	94V-0	130	130	130	—	—	—	—	—
		0.75	94V-0	130	130	130	0	4	—	—	—
		1.5	94V-0	130	130	130	0	4	—	—	—
		3.0	94V-0	130	130	130	1	4	0	5	4

**(X) Denotes any number 1 thru 9.**  
**(Y) Denotes any number 1 thru 7.**



**RoHS Compliant**

NOTE : Specifications subject to change without notice. Please check our website for latest information.

01.05.2008



**SUPERWORLD ELECTRONICS (S) PTE LTD**