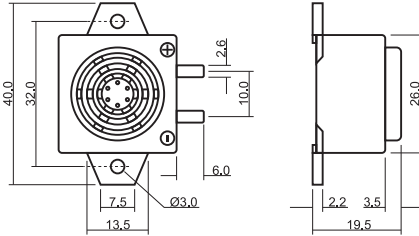
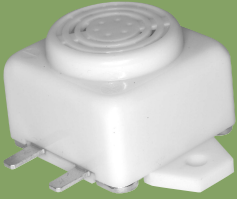


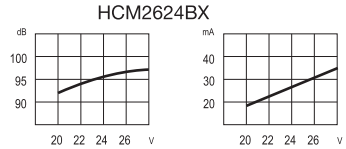
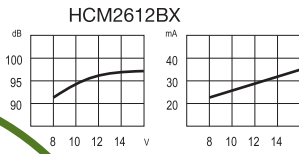
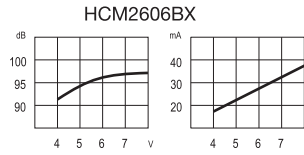
SoniCrest Electro-Magnetic Sound Generators

HCM26BX Series



Dimension

Unit: mm
Tolerance : 0.3mm



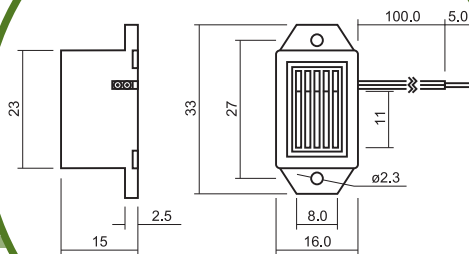
Characteristics Response

Measuring Temperature : 25°C
Measuring Distance : 10cm

Specification (all data taken at 25°C unless otherwise specified)

Model	Rated Voltage (V)	Operating Voltage (V)	★Rated Current (mA)	★Sound Output at 10cm (dB)	★Generated Frequency (Hz)	Operating Temperature (°C)	Storage Temperature (°C)	Weight (g)
HCM2606BX	6	4 ~ 8	≤35	≥95	300 ~ 500	-40 ~ +70	-40 ~ +80	17
HCM2612BX	12	8 ~ 16	≤35	≥95	300 ~ 500	-40 ~ +70	-40 ~ +80	17
HCM2624BX	24	20 ~ 28	≤35	≥95	300 ~ 500	-40 ~ +70	-40 ~ +80	17

★ Value Applying Rated Voltage,DC



Dimension

Unit: mm
Tolerance : 0.3mm

HCE23A Series



Specification (all data taken at 25°C unless otherwise specified)

Model	Rated Voltage (V)	Operating Voltage (V)	★Rated Current (mA)	★Sound Output at 10cm (dB)	★Generated Frequency (Hz)	Tone	Housing Material	Terminal	Weight (g)
HCE2303A	3	2 ~ 4	≤15	≥75	300 ~ 800	Single	ABS	Pin/Wine	10
HCE2306A	6	3 ~ 7	≤20	≥75	300 ~ 800	Single	ABS	Pin/Wine	10
HCE2309A	9	6 ~ 11	≤15	≥75	300 ~ 800	Single	ABS	Pin/Wine	10
HCE2312A	12	7 ~ 17	≤15	≥75	300 ~ 800	Single	ABS	Pin/Wine	10
HCE2324A	24	16 ~ 30	≤20	≥75	300 ~ 800	Single	ABS	Pin/Wine	10

★ Value Applying Rated Voltage,DC