

HiTRON

PCB-MOUNT DC-DC CONVERTER ENCAPSULATED MODULES INDUSTRIAL GRADE 25 WATTS DUAL OUTPUT HDM25-D SERIES



FEATURES:

- DUAL OUTPUT
- 2:1 INPUT RANGE
- 25W ISOLATED OUTPUT
- SIX-SIDED METAL SHIELD

SPECIFICATION

INPUT SPECIFICATION

Input Range: 2:1 DC input range:
4.5-9/9-18/18-36/36-72Vdc.

Input Voltage: Nominal 5/12/24/48Vdc.

Input Current: Various with input range and load.

Input Fuse: Use external fuse.

Input Filter: Pi-Network.

Input Reflect Ripple Current: 45mA typical.

Isolation Resistor: 1,000 Mega Ohms.

Isolation Voltage: 1,500Vdc.

EMI: Six-sided metal shielding.

Remote On/Off: TTL/CMOS-Compatible Input Control.

Positive Logic version for Standard set up:
ON(Enable)=Open(or 2.5-5.0Vdc above-Vin)
OFF(Disable)=Short(or 0-0.8Vdc above-Vin)

Negative Logic version option available by adding a
“N”suffix to the end of Model #.

Remark: Voltage refer to -Input(-Vin).

OUTPUT SPECIFICATION

Output Voltage: See Ratings Chart.

Output Current: See Ratings Chart.

Voltage Accuracy: Main O/P $\pm 2.0\%$ typical.

Line Regulation: $\pm 0.06\%$ typical.

Load Regulation: VO1 $\pm 0.60\%$, VO2 $\pm 0.5\%$ typical.

Noise & Ripple: 1.0% typical.

OVP: Built-in on main output VO1.

Adjustability: VO1 O/P may optionally be external
trimmed $\pm 3.0\%$ with a fixed resistors or trim-pot.

Short Circuit Protection:
Power fold back, and self-recovering.

Overload Protection (OLP):
Fully protected against output overload and short circuit.
OLP set at about 125-150% rating output wattage.
Consult the factory for OLP setting.

GENERAL SPECIFICATION

Efficiency: 77-85% typical, various with input.

Switching Frequency: Fixed frequency 450K Hz.

Circuit Topology: 450K Hz. Forward Circuit.

Transient Response: Max. excursion 140mV,
Recovery time <200 μ Sec. @ 25%
step load change.

Case: Black coated copper with non-conductive
metal base.

Power Density: 10.0 Watts. / Cubic inch.

MTBF: 1,000,000 hours to Mil. Std. 217, 25°C.

Operating Temperature: Industrial Grade -25°C to
+85°C range. 0°C to +70°C @ full load without derating.
From +70°C derating linearly to half load @ +85°C.
(Refer to the Derating Chart for commercial grade.)

Temperature: -40°C to +105°C for industrial grade.

Temperature Coefficient: $\pm 0.03\%$ /°C.

Humidity: Up to 95%RH, Non-condensing.

Cooling: Convection cooling up to +70°C @ full load.
At least 100LFM moving air is recommended for
full load >+71°C in a confined area.

Industrial Grade for 12B/24B/48B input.
Commercial Grade only for 5B input.

NOTE: (1) All measurements are at nominal input, full load, and +25°C unless otherwise specified.

(2) Line Regulation measured from High to Low Lines at full load.

(3) Load Regulation measured from Full Load to 1/2 Full Load at nominal input.

(4) Correct fuse size by calculating the max. DC current drains at low Line input & Load and then adding 20-25% for the desired fuse size.

Due to requests in market and advances in technology, specifications subject to change without notice.

INPUT/OUTPUT & VOLTAGE/CURRENT RATINGS CHART

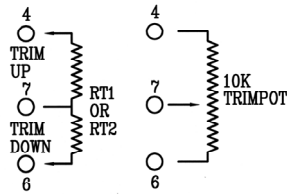
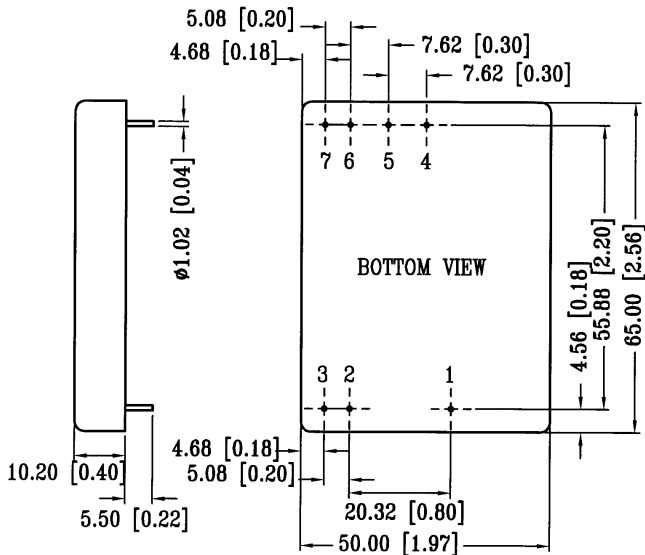
DUAL OUTPUT

MODEL NO.	INPUT Vdc	INPUT CURRENT		OUTPUT (Vdc)		OUTPUT (A)		CASE SIZE
		N.L. (mA)	F.L.	+VO1@★	-VO2	+VO1	-VO2	
HDM25-5B-D12	4.5- 9.0	150	5,020	+12.0V	-12.0V	0.84A	0.84A	DM2H
HDM25-5B-D15	4.5- 9.0	150	5,020	+15.0V	-15.0V	0.67A	0.67A	DM2H
HDM25-12B-D12	9.0-18.0	100	2,100	+12.0V	-12.0V	0.84A	0.84A	DM2H
HDM25-12B-D15	9.0-18.0	100	2,100	+15.0V	-15.0V	0.67A	0.67A	DM2H
HDM25-24B-D12	18.0-36.0	60	1,050	+12.0V	-12.0V	0.84A	0.84A	DM2H
HDM25-24B-D15	18.0-36.0	60	1,050	+15.0V	-15.0V	0.67A	0.67A	DM2H
HDM25-48B-D12	36.0-72.0	60	530	+12.0V	-12.0V	0.84A	0.84A	DM2H
HDM25-48B-D15	36.0-72.0	60	530	+15.0V	-15.0V	0.67A	0.67A	DM2H

Symbols: "★" OVP built-in. "@ " Adjustable. " || " Double Feedback.

MECHANICAL DIMENSIONS: MM [INCHES]

WEIGHT: 85 g (3.0 Oz.)



PIN ASSIGNMENT

PIN NO.	DUAL
PIN# 1.	+INPUT
PIN# 2.	-INPUT
PIN# 3.	REMOTE ON/OFF
PIN# 4.	+VO1
PIN# 5.	DC-COM
PIN# 6.	-VO2
PIN# 7.	OUTPUT TRIM

CASE SIZE: DM2H

DERATING CHART

