



Small and flexible, Molex's TelEnable FDM transmits serial data and fax protocol over digital wireless networks

The TelEnable FDM is the latest extension of the TelEnable product family. Offering the combined capabilities of FaxEnable™ and EMS-Enable™, the FDM provides a smaller package, reliably transmitting either a digital data stream, a digital fax or a 12-lead ECG. Transmissions are sent via a digital cellular network and can be delivered via a set of standard protocols.

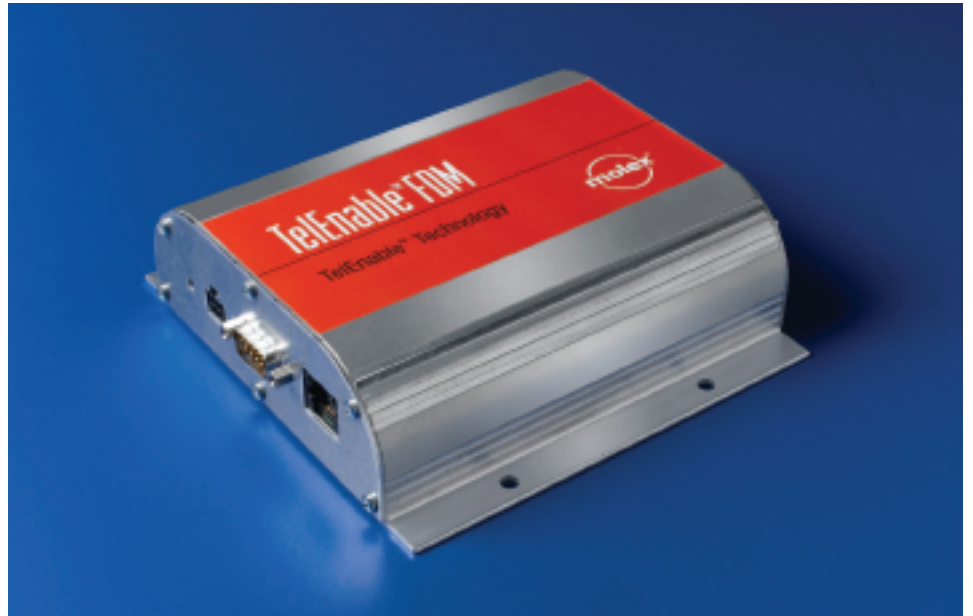
FDM can be powered using a standard 12V AC adapter that connects via a four-position Micro-Fit 3.0™ connector. This power approach can be simpler and more cost-effective for environments where 12V or 120V power is readily available.

The FDM can be configured or customized to fit many data applications, leveraging the TelEnable protocol conversion capabilities. These transmission capabilities are extremely valuable in many market segments, including utilities, railroad, automotive, remote medical and security.

In standard configurations, the FDM can support RS232, PSTN, Class III fax and V.92 modem protocols. New variations are in development. For more information please contact us at TelEnable@molex.com.

Features and Benefits

- "Bag-phone" replacement provides drop-in digital solution for existing analog cellular applications
- Flexible design provides interface for new or evolving protocols, enables compatibility and minimizes user training
- Serial data option eliminates the need for old modem technology
- Higher data transmission speeds help to lower data collection costs
- Reliable data collection reduces re-tries and eliminates manual readings
- Data encryption provides secure transmission and receipt of information



SPECIFICATIONS

Reference Information

Designed In: Millimeters
 Communications Interface: RS-232C and Telco (Tip/Ring)
 Serial Data Rates: Up to 115.2 kbps supported
 Packaging: Corrugated carton with partition
 Interconnects: 9 position d-sub (male), 4 position Micro-Fit 3.0™, RJ-45 with Lightpipes
 Outputs for status indicators
 Field configurable using touchtone phone and serial interface
 Analog phone interface standard, including: ring-down, dial-tone and DTMF decode

Works with any circuit data-enabled wireless phone, including CDMA, PCS, TDMA, GSM/GPRS and IDEN
 Protocols Supported: Group III Fax, V.92 Modem

Physical

Dimensions: 145.3mm L x 140.2mm W x 47.8mm H (5.7"L x 5.5"W x 1.7"H)
 Weight: 0.484 kg (17.1 oz)
 Material: FR-4 PCB
 Operating Temperature: -20 to +70° C (-4 to +158° F)
 Storage Temperature -40 to +85° C (-40 to +185° F)

Electrical

Operating Voltage: 12V DC at 0.5A



- **Wireless Communications:**
 - Local or short-range (802.11 or Bluetooth*)
 - Cellular/PCS
- **Transportation:**
 - OEM's (Automobile, Trucks, and RVs)
 - Railways
- **EMS:**
 - Fire (Commissioners and Chiefs)
 - Rescue
- **Remote Monitoring:**
 - Security systems
 - Utilities



ORDERING INFORMATION

Order No.	Description	Description
79529-5002	TelEnable FDM	Fax/Data Module supporting remote data collection and faxing applications
79529-5012	TelEnable FDM	Fax/Data Module with universal 12V adapter included
79529-5003	TelEnable FDM for EMS	EMS-Enable module for transmission of a12-lead ECG (For medical applications where FDA requirements apply)
79529-5013	TelEnable FDM for EMS	EMS-Enable Module with universal 12V adapter included

* Bluetooth is a registered trademark of Bluetooth SIG, Inc.

Americas Headquarters
Lisle, Illinois 60532 U.S.A.
1-800-78MOLEX
amerinfo@molex.com

Far East North Headquarters
Yamato, Kanagawa, Japan
81-462-65-2324
feninfo@molex.com

Far East South Headquarters
Jurong, Singapore
65-6-268-6868
fesinfo@molex.com

European Headquarters
Munich, Germany
49-89-413092-0
eurinfo@molex.com

Corporate Headquarters
2222 Wellington Ct.
Lisle, IL 60532 U.S.A.
630-969-4550
Fax:630-969-1352

Visit our Web site at <http://www.telenable.com>