

### 1. PART NO. EXPRESSION :

SSB1004101MZ F

(a) (b) (c) (d)(e)(f)

(a) Series code

(b) Dimension code

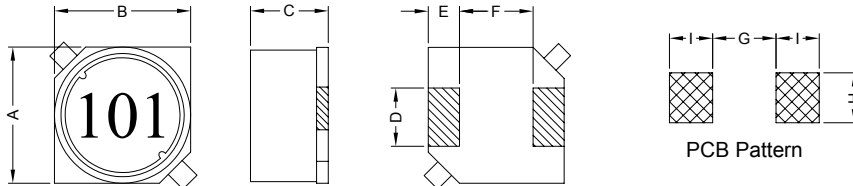
(c) Inductance code : 101 = 100uH

(d) Tolerance code : M = ±20%

(e) X, Y, Z : Standard part

(f) F : Lead Free

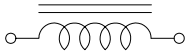
### 2. CONFIGURATION & DIMENSIONS :



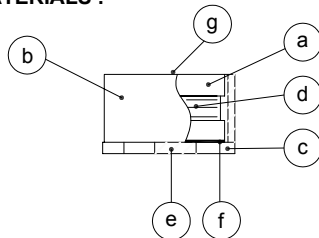
Unit:m/m

A	B	C	D	E	F	G	H	I
10.0±0.3	10.0±0.3	4.6±0.3	2.4±0.2	2.0±0.2	6.0±0.2	5.7 Ref.	2.8 Ref.	2.5 Ref.

### 3. SCHEMATIC :



### 4. MATERIALS :



(a) Core : DR Ferrite Core

(b) Core : RI Ferrite Core

(c) Base : LCP

(d) Wire : Enamelled Copper Wire

(e) Terminal : Tinned Copper Plate

(f) Adhesive : Epoxy

(g) Ink : Bon Margue

### 5. GENERAL SPECIFICATION :

- a) Temp. rise : 40°C Max.
- b) Rated current : Base on temp. rise &  $\Delta L/L0A = 30\%$  Max.
- c) Storage temp. : -40°C to +125°C
- d) Operating temp. : -40°C to +85°C
- e) Resistance to solder heat : 260°C.10 secs



**RoHS Compliant**

NOTE : Specifications subject to change without notice. Please check our website for latest information.

18.04.2008



**SUPERWORLD ELECTRONICS (S) PTE LTD**

PG. 1

## 6. ELECTRICAL CHARACTERISTICS :

Part No.	Inductance ( $\mu$ H)	Test Frequency (Hz)	RDC (m $\Omega$ ) Max.	IDC (A) Max.
SSB10041R5MZF	1.5 $\pm$ 20%	1V / 100K	21	5.00
SSB10042R2MZF	2.2 $\pm$ 20%	1V / 100K	24	4.50
SSB10043R3MZF	3.3 $\pm$ 20%	1V / 100K	26	4.00
SSB10044R7MZF	4.7 $\pm$ 20%	1V / 100K	30	3.00
SSB10046R8MZF	6.8 $\pm$ 20%	1V / 100K	35	2.50
SSB1004100MZF	10.0 $\pm$ 20%	1V / 100K	42	2.20
SSB1004120MZF	12.0 $\pm$ 20%	1V / 100K	50	2.00
SSB1004150MZF	15.0 $\pm$ 20%	1V / 100K	55	1.80
SSB1004180MZF	18.0 $\pm$ 20%	1V / 100K	60	1.70
SSB1004220MZF	22.0 $\pm$ 20%	1V / 100K	80	1.50
SSB1004270MZF	27.0 $\pm$ 20%	1V / 100K	85	1.20
SSB1004330MZF	33.0 $\pm$ 20%	1V / 100K	110	1.15
SSB1004390MZF	39.0 $\pm$ 20%	1V / 100K	120	1.10
SSB1004470MZF	47.0 $\pm$ 20%	1V / 100K	150	1.00
SSB1004560MZF	56.0 $\pm$ 20%	1V / 100K	160	0.90
SSB1004680MZF	68.0 $\pm$ 20%	1V / 100K	190	0.85
SSB1004820MZF	82.0 $\pm$ 20%	1V / 100K	210	0.80
SSB1004101MZF	100.0 $\pm$ 20%	1V / 100K	300	0.70
SSB1004121MZF	120.0 $\pm$ 20%	1V / 100K	330	0.65
SSB1004151MZF	150.0 $\pm$ 20%	1V / 100K	360	0.55
SSB1004181MZF	180.0 $\pm$ 20%	1V / 100K	510	0.50
SSB1004221MZF	220.0 $\pm$ 20%	1V / 100K	560	0.45
SSB1004271MZF	270.0 $\pm$ 20%	1V / 100K	700	0.40
SSB1004331MZF	330.0 $\pm$ 20%	1V / 100K	760	0.37
SSB1004391MZF	390.0 $\pm$ 20%	1V / 100K	1050	0.32
SSB1004471MZF	470.0 $\pm$ 20%	1V / 100K	1100	0.30
SSB1004561MZF	560.0 $\pm$ 20%	1V / 100K	1250	0.28
SSB1004681MZF	680.0 $\pm$ 20%	1V / 100K	1700	0.24
SSB1004821MZF	820.0 $\pm$ 20%	1V / 100K	1900	0.23
SSB1004102MZF	1000.0 $\pm$ 20%	1V / 100K	2150	0.22



RoHS Compliant

NOTE : Specifications subject to change without notice. Please check our website for latest information.

18.04.2008

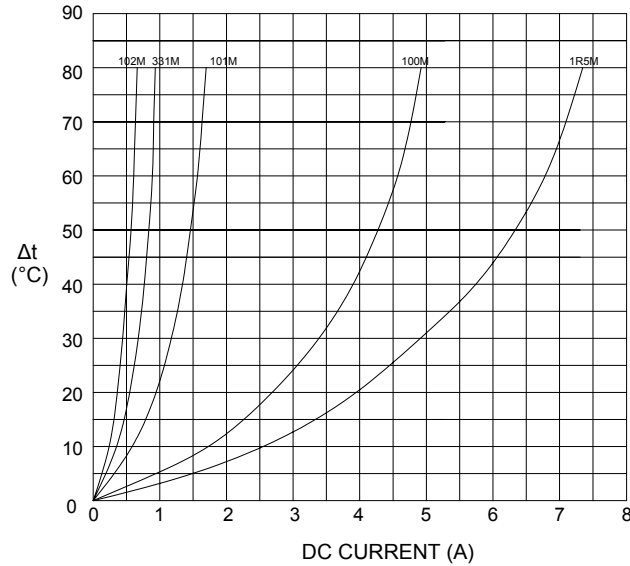


SUPERWORLD ELECTRONICS (S) PTE LTD

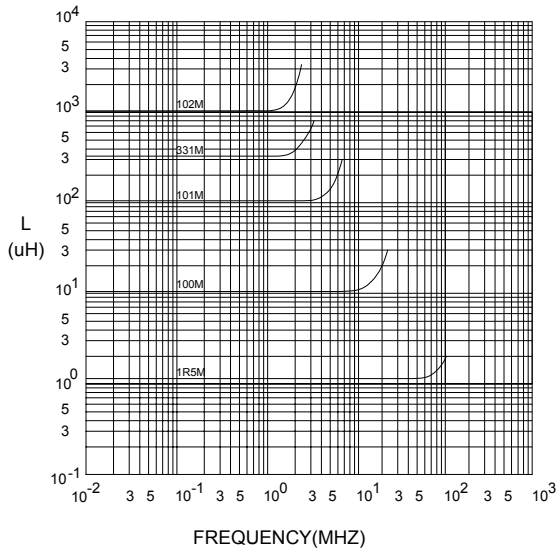
PG. 2

## 7. CHARACTERISTICS CURVES :

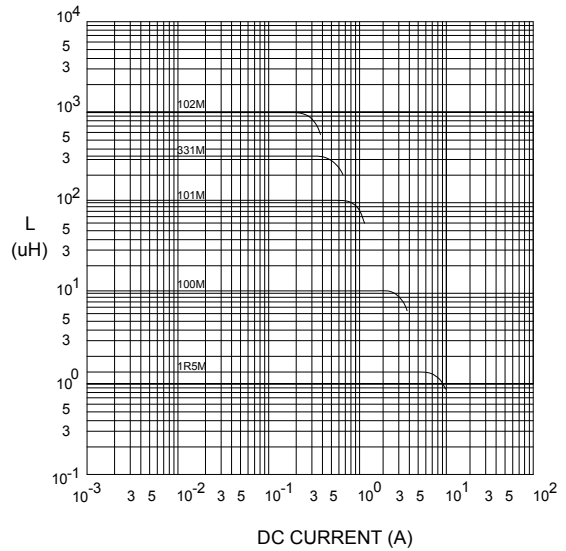
@ TEMP. RISE VS. DC SUPERPOSITION RESPONSE CURVE



@ INDUCTANCE VS. FREQUENCY RESPONSE CURVE



@ INDUCTANCE VS. DC SUPERPOSITION RESPONSE CURVE



**RoHS Compliant**

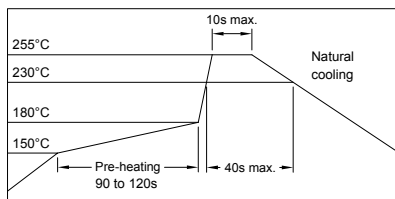
NOTE : Specifications subject to change without notice. Please check our website for latest information.

18.04.2008



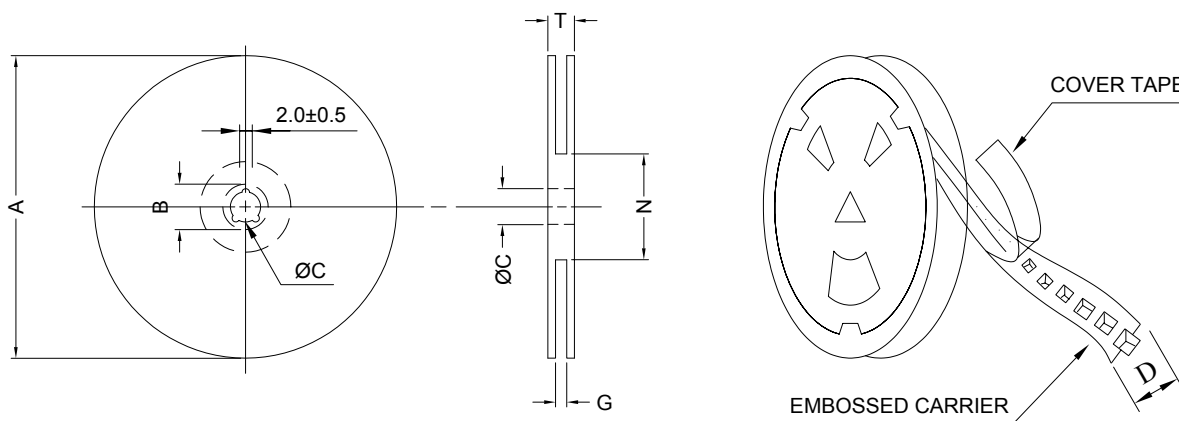
**SUPERWORLD ELECTRONICS (S) PTE LTD**

### RECOMMENDED SOLDERING CONDITIONS REFLOW SOLDERINGS

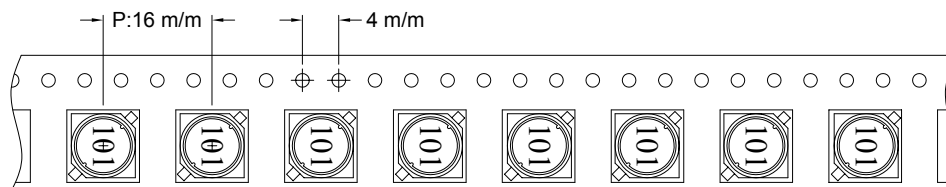


### 8. PACKAGING INFORMATION :

#### ( 1 ) CONFIGURATION



\* CARRIER TAPE WIDTH : D



#### ( 2 ) DIMENSIONS

Unit:m/m

STYLE	A	B	C	D	G	N	T
13-24	330	21±0.8	13	24	26 <sup>+0</sup>	50 <sup>-0</sup>	30.4

#### ( 3 ) Q'TY & G.W. PER PACKAGE

SERIES	INNER : REEL			OUTER : CARTON		
	Q'TY (PCS)	G.W. (gw)	STYLE	Q'TY (PCS)	G.W. (Kg)	SIZE (cm)
SSB1004	600	1000	13-24	2400	7.5	40 x 40 x 24



**RoHS Compliant**

NOTE : Specifications subject to change without notice. Please check our website for latest information.

18.04.2008

## 9. RELIABILITY AND TEST CONDITION :

TEST ITEM	SPECIFICATION	TEST CONDITION
SOLDERABILITY	MORE THAN 90% OF THE TERMINAL ELECTRODE SHALL BE COVERED WITH FRESH SOLDER.	PREHEAT : 125±25°C FOR 60 SECONDS SOLDER : 99%Sn/0.3%Ag/0.7%Cu or equivalent SOLDER TEMP. : 245±5°C FLUX : ROSIN DIP TIME : 4±1 SECONDS
THERMAL SHOCK TEST  ( TEMP. CYCLE )	INDUCTANCE SHALL NOT CHANGE MORE THAN ±20%	ROOM TEMP. → -25±2°C 15 MINUTES → 30 MINUTES  ROOM TEMP. → 85±2°C 15 MINUTES → 30 MINUTES  TOTAL : 50 CYCLES
HUMIDITY RESISTANCE TEST		TEMPERATURE : 40±2°C HUMIDITY : 90 ~ 95% APPLIED CURRENT : PER SPEC. TIME : 500 HOURS
HIGH TEMP. RESISTANCE TEST		TEMPERATURE : 85±2°C APPLIED CURRENT : PER SPEC. TIME : 500 HOURS



**RoHS Compliant**

NOTE : Specifications subject to change without notice. Please check our website for latest information.

18.04.2008



**SUPERWORLD ELECTRONICS (S) PTE LTD**

**10. UL CARD :**

**OBMW2** **November 30, 2000**  
**Magnet Wire - Component**  
**PACIFIC ELECTRIC WIRE & CABLE (SHENZHEN) CO LTD** **E201757**  
**607 BAOLONG INDUSTRIAL ESTATE LONGGANG, SHENZHEN**  
**GUANGDONG CHINA**

Mtl Dsg	BC	Coating Type	TC	ANSI Type	TI
UEW/U		<b>Polyurethane</b>	—	—	<b>130</b>
PEW/U		<b>Polyester</b>	—	<b>MW5-C</b>	<b>155°C</b>
PEWH/U		<b>Modified Polyester</b>	—	<b>MW30-C</b>	<b>180</b>
PEW-NY/U		<b>Polyester</b>	<b>Polyamide</b>	<b>MW24-C</b>	<b>155</b>
HAI/U		<b>Polyester(Amide)(Imide)</b>	<b>Polyamideimide</b>	<b>MW35,73</b>	<b>200</b>
UEW-NY/U		<b>Polyurethane</b>	<b>Polyamide</b>	<b>MW80-C</b>	<b>155</b>
				<b>MW28-C</b>	<b>130</b>

**Marking: Company name and material designation or marked designation on package or reel, and Recognized Component Mark.**

**See General Information Preceding These Recognitions**

**1/3/2001** **Underwriters Laboratories Inc.** **Card 1 of 2**

**SUMITOMO CHEMICAL CO LTD** **E54705 (M)**  
**5-33 KITAHAMA 4-CHOME CHUO-KO, OSAKA JAPAN**

Mtl Dsg	Col	Min Thk mm	UL94 Flame Class	Elec	RTI		w/o Imp	H W I	H A I	H V T R	D 4 5	C T I
					with Imp	Mech						
Liquid crystal polyester (LCP), designated "EKONOL" or "SUMIKASUPER", furnished in the form of pellets, (Contd)												
E4008, E400X	NC, BK	0.30	94V-0	130	130	130	—	—	—	—	—	—
		0.75	94V-0	130	130	130	3	4	—	—	—	—
		1.5	94V-0	130	130	130	2	4	—	—	—	—
		3.0	94V-0	130	130	130	1	4	0	5	4	—
E4008	NC, WT, BK	0.30	94V-0	130	130	130	—	—	—	—	—	—
		0.75	94V-0	220	180	220	3	4	—	—	—	—
		1.5	94V-0	220	200	240	2	4	—	—	—	—
		3.0	94V-0	220	200	240	1	4	0	5	4	—
E4010	NC, BK	0.30	94V-0	130	130	130	—	—	—	—	—	—
		0.75	94V-0	220	180	220	3	4	—	—	—	—
		1.5	94V-0	220	200	240	2	4	—	—	—	—
		3.0	94V-0	220	200	240	1	4	0	5	4	—
E400(Y)L, E4008L	NC, BK	0.30	94V-0	130	130	130	—	—	—	—	—	—
		0.75	94V-0	130	130	130	3	4	—	—	—	—
		1.5	94V-0	130	130	130	2	4	—	—	—	—
		3.0	94V-0	130	130	130	1	4	0	5	4	—
E4810	NC, BK	0.30	94V-0	130	130	130	—	—	—	—	—	—
		0.75	94V-0	130	130	130	0	4	—	—	—	—
		1.5	94V-0	130	130	130	0	4	—	—	—	—
		3.0	94V-0	130	130	130	1	4	0	5	4	—

(X) Denotes any number 1 thru 9.  
(Y) Denotes any number 1 thru 7.



**RoHS Compliant**

NOTE : Specifications subject to change without notice. Please check our website for latest information.

18.04.2008



**SUPERWORLD ELECTRONICS (S) PTE LTD**