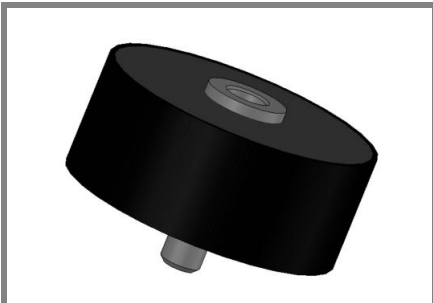


# Si-E 8000\_3600-1,8



## High voltage rectifiers

Si-E 8000\_3600-1,8

Forward Current: 1,8 A

Reverse Voltage: to 24000 V

### Features

- Simple mounting
- Epoxy material has UL classification 94V-0
- Use in oil
- Standard packing : bulk

### Typical Applications

- X-ray equipment
- Electrostatic dust precipitators
- Lasers
- HV welding
- HV test equipment
- Wood dry equipment
- Plasma equipment
- HV power supply

### Mechanical Data

- Epoxy potting
- Weight approx. : 110g
- Plastic case :  $\Phi 55 \times 36$  (mm)

Type	Repetitive peak reverse voltage $V_{RRM}$ V	Alternate input voltage $V_{VRMS}$ V	Rated DC voltage $V_{RD}$ V	Max. forward voltage $V_F$ V
Si-E 8000/3600-1,8	24000	8000	3600	15 at $I_{FAV}$

### Absolute Maximum Ratings

$T_C = 25^\circ\text{C}$  unless otherwise specified

Symbol	Conditions	Values	Units
$I_{FAV}$	Max. averaged fwd. current, R-load, $T_A = 45^\circ\text{C}$	1,8	A
$I_{FSM}$	Surge forw. current 50 Hz half sin-wave, $T_A = 45^\circ\text{C}$	100	A
$I_t^2$	Rating for fusing, $t < 10$ ms	50	A <sup>2</sup> s
$I_R$	Maximum reverse current, $T_J = 25^\circ\text{C}$ , $V_R = V_{RRM}$	10	$\mu\text{A}$
$I_R$	Maximum reverse current, $T_J = 150^\circ\text{C}$ , $V_R = V_{RRM}$	1	mA
$T_J$	Operating junction temperature	-40 ... +150	$^\circ\text{C}$
$T_s$	Storage temperature	-40 ... +150	$^\circ\text{C}$

