

SURFACE MOUNT 121.6 MHz SAW FILTER

AFS121.6W01-SS97



RoHS
Compliant



5.0 x 5.0 x 1.0 mm

FEATURES:

- Low Insertion Loss
- Surface Mount Package

APPLICATIONS:

- RF SAW Filter for Telecommunications

ELECTRONIC SPECIFICATIONS:

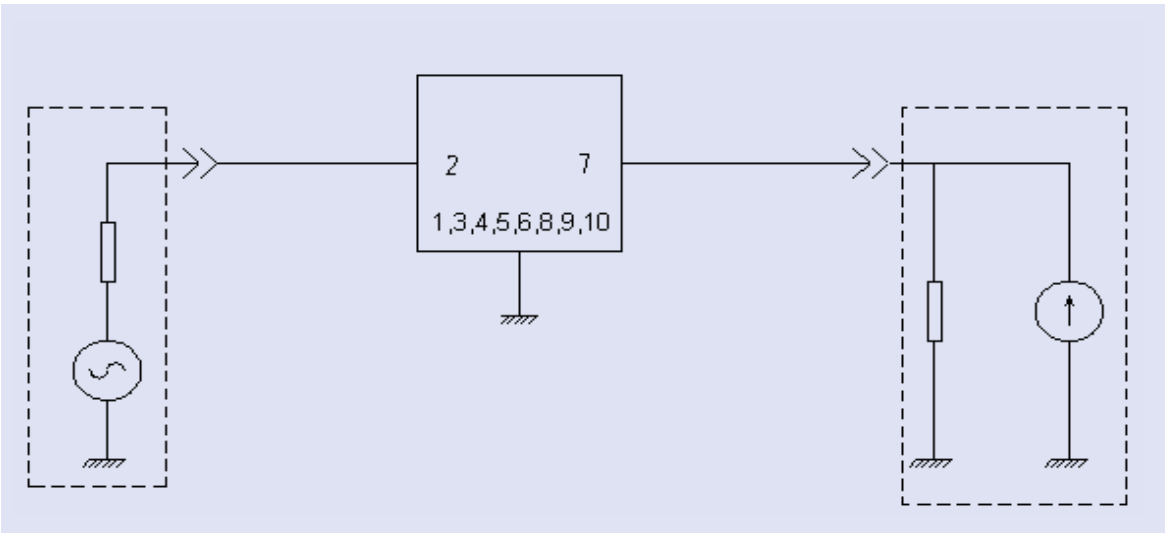
PARAMETERS

ABRACON P/N: AFS121.6W01-SS97

| Item | Units | Minimum | Typical | Maximum |
|--------------------------------|-------|---------|---------|---------|
| Center Frequency Fo | MHz | -- | 121.6 | -- |
| Passband Width | MHz | -- | Fo±1.0 | -- |
| Insertion Loss (Pass Band) | dB | -- | -- | 4.0 |
| Passband Ripple (Pass Band) | dB | -- | -- | 2.0 |
| Stop Band Attenuation | | | | |
| 100 ~ 108 MHz | dB | 45 | -- | -- |
| 108 ~ 116 MHz | dB | 35 | -- | -- |
| 130 ~ 142 MHz | dB | 40 | -- | -- |
| Terminating Impedance | Ω | -- | 50 | -- |

| | |
|------------------------|-----------------------|
| DC Permissive Voltage: | 10Vdc max. |
| Operating temperature: | -40°C to +85°C |
| Storage temperature: | -45°C to +85°C |
| Maximum Input Power | 10 dBm |

TEST CIRCUIT:



SURFACE MOUNT 121.6 MHz SAW FILTER

AFS121.6W01-SS97

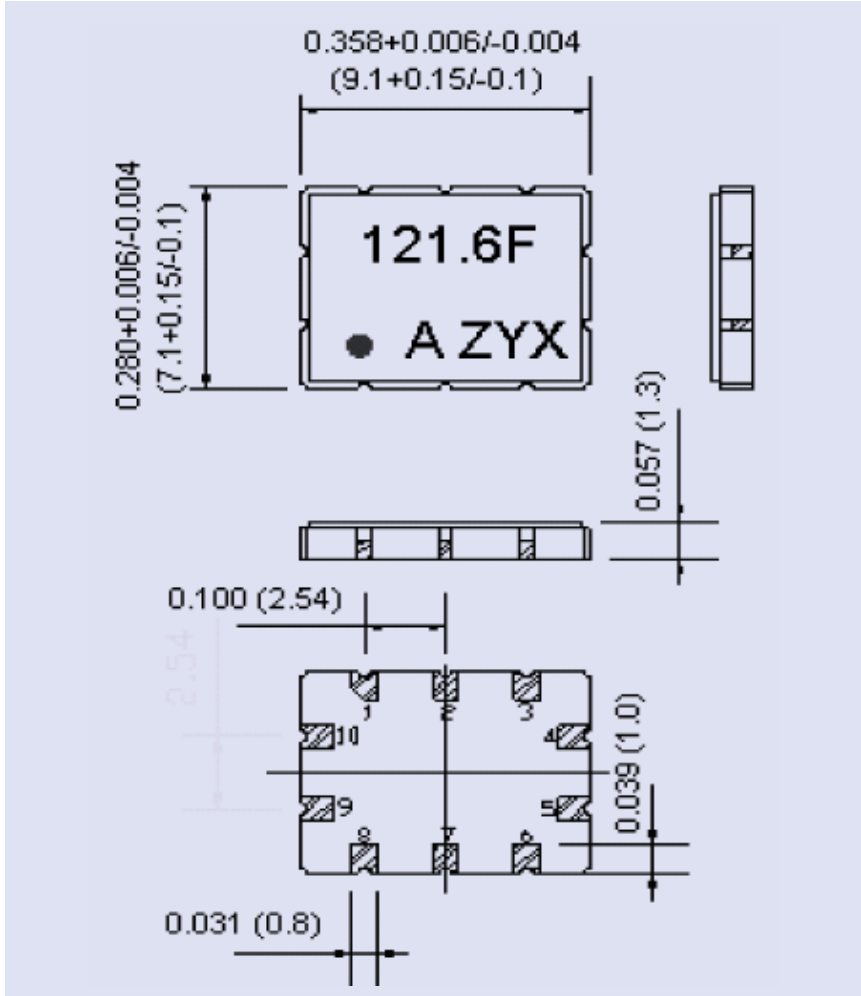


RoHS
Compliant



5.0 x 5.0 x 1.0 mm

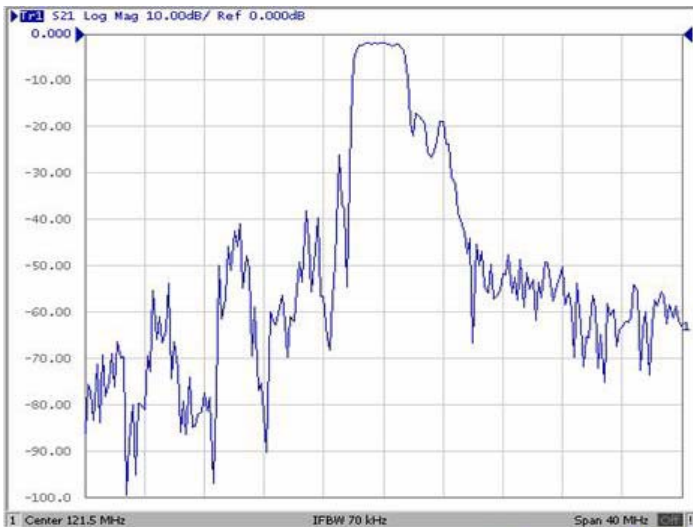
OUTLINE DIMENSIONS:



Dimension : Inches (mm)

| Pin# | Function |
|-------|----------|
| 2 | Input |
| 7 | Output |
| Other | Ground |

FREQUENCY CHARACTERS:



ABRACON IS
ISO 9001 / QS 9000
CERTIFIED



ABRACON
CORPORATION

Visit www.abracon.com for Terms & Conditions of Sale **Revised: 1.14.08**
30332 Esperanza, Rancho Santa Margarita, California 92688
tel 949-546-8000 | fax 949-546-8001 | www.abracon.com