



Dual N-Channel 8-V (D-S) MOSFET

CHARACTERISTICS

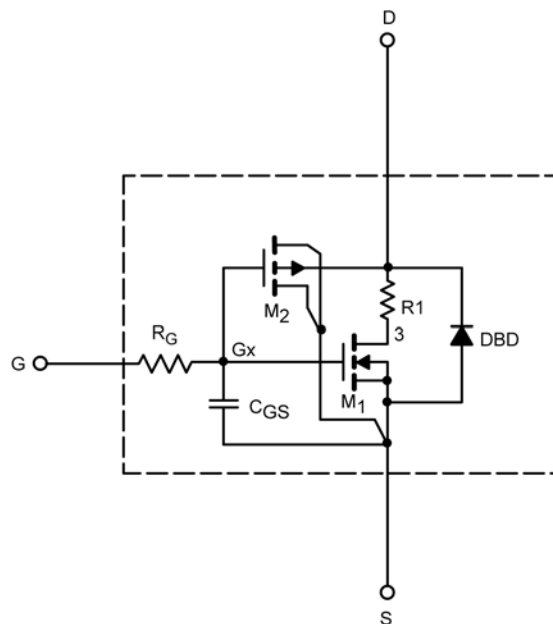
- N-Channel Vertical DMOS
- Macro Model (Subcircuit Model)
- Level 3 MOS
- Apply for both Linear and Switching Application
- Accurate over the -55 to 125°C Temperature Range
- Model the Gate Charge, Transient, and Diode Reverse Recovery Characteristics

DESCRIPTION

The attached spice model describes the typical electrical characteristics of the n-channel vertical DMOS. The subcircuit model is extracted and optimized over the -55 to 125°C temperature ranges under the pulsed 0-V to 4.5-V gate drive. The saturated output impedance is best fit at the gate bias near the threshold voltage.

A novel gate-to-drain feedback capacitance network is used to model the gate charge characteristics while avoiding convergence difficulties of the switched C_{gd} model. All model parameter values are optimized to provide a best fit to the measured electrical data and are not intended as an exact physical interpretation of the device.

SUBCIRCUIT MODEL SCHEMATIC



This document is intended as a SPICE modeling guideline and does not constitute a commercial product data sheet. Designers should refer to the appropriate data sheet of the same number for guaranteed specification limits.

SPICE Device Model SiA414DJ



Vishay Siliconix

SPECIFICATIONS (T _J = 25°C UNLESS OTHERWISE NOTED)					
Parameter	Symbol	Test Condition	Simulated Data	Measured Data	Unit
Static					
Gate Threshold Voltage	V _{GS(th)}	V _{DS} = V _{GS} , I _D = 250 μA	0.57		V
On-State Drain Current ^a	I _{D(on)}	V _{DS} ≤ 5 V, V _{GS} = 4.5 V	423		A
Drain-Source On-State Resistance ^a	r _{DS(on)}	V _{GS} = 4.5 V, I _D = 9.7 A	0.009	0.009	Ω
		V _{GS} = 2.5 V, I _D = 9 A	0.011	0.011	
		V _{GS} = 1.8 V, I _D = 8.1 A	0.013	0.013	
Forward Transconductance ^a	g _{fs}	V _{DS} = 6 V, I _D = 9.7 A	49	50	S
Forward Voltage ^a	V _{SD}	I _S = 10 A	0.84	0.80	V
Dynamic^b					
Input Capacitance	C _{iss}	V _{DS} = 4 V, V _{GS} = 0 V, f = 1 MHz	1872	1800	pF
Output Capacitance	C _{oss}		608	650	
Reverse Transfer Capacitance	C _{rss}		447	450	
Total Gate Charge	Q _g	V _{DS} = 4 V, V _{GS} = 5 V, I _D = 10 A	17	21	nC
Gate-Source Charge	Q _{gs}	V _{DS} = 4 V, V _{GS} = 4.5 V, I _D = 10 A	16	19	
Gate-Source Charge	Q _{gs}		2.5	2.5	
Gate-Drain Charge	Q _{gd}		6.5	6.5	

Notes

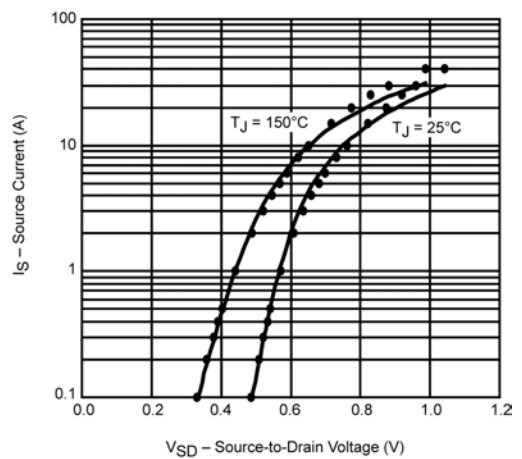
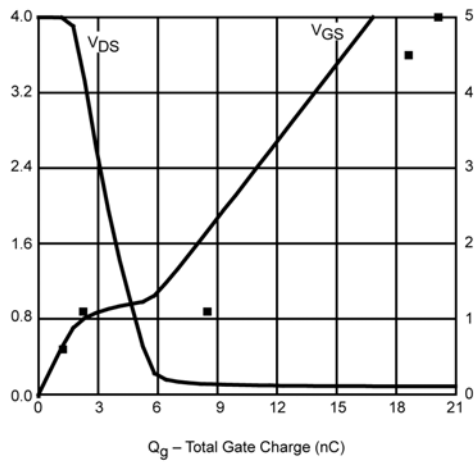
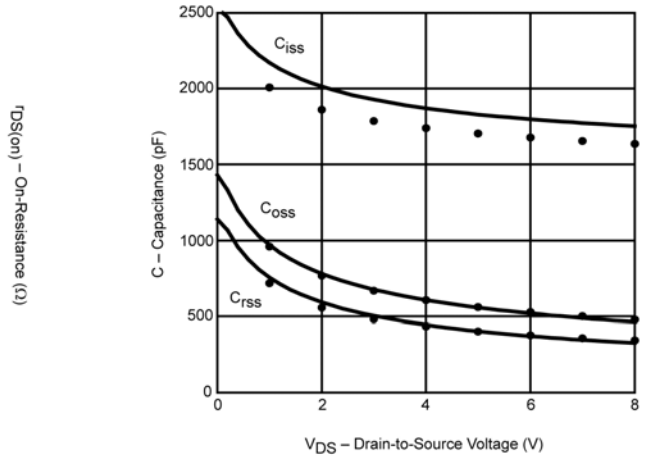
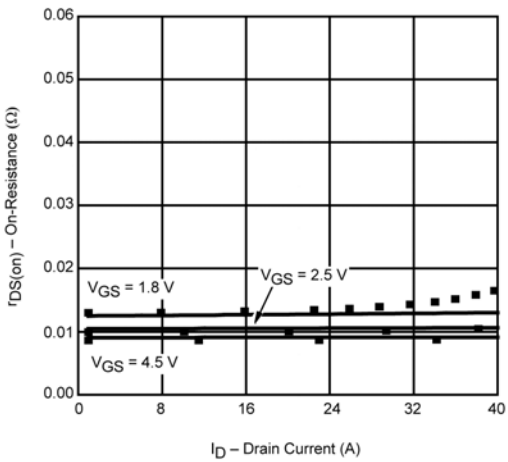
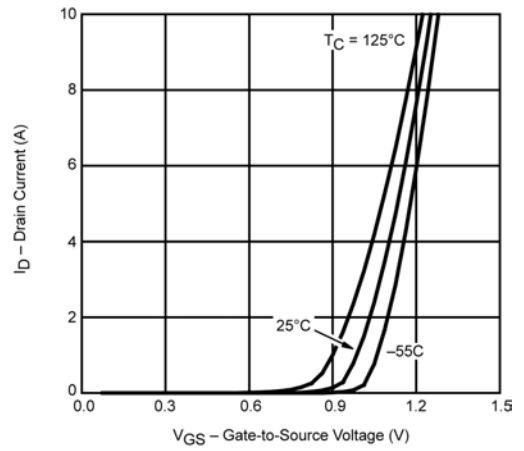
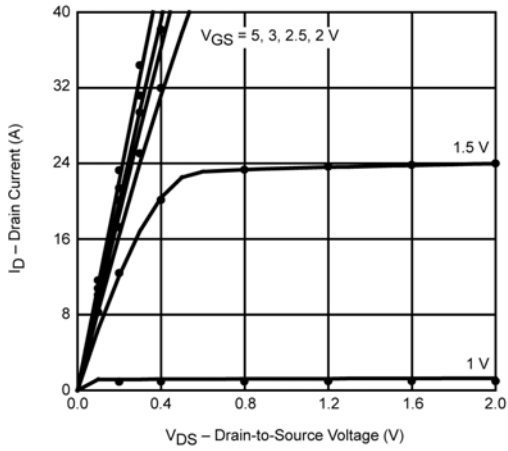
- a. Pulse test; pulse width ≤ 300 μs, duty cycle ≤ 2%.
- b. Guaranteed by design, not subject to production testing.



SPICE Device Model SiA414DJ

Vishay Siliconix

COMPARISON OF MODEL WITH MEASURED DATA ($T_J=25^\circ\text{C}$ UNLESS OTHERWISE NOTED)



Note: Dots and squares represent measured data.