



ATTENTION
OBSERVE PRECAUTIONS
FOR HANDLING
ELECTROSTATIC
DISCHARGE
SENSITIVE
DEVICES

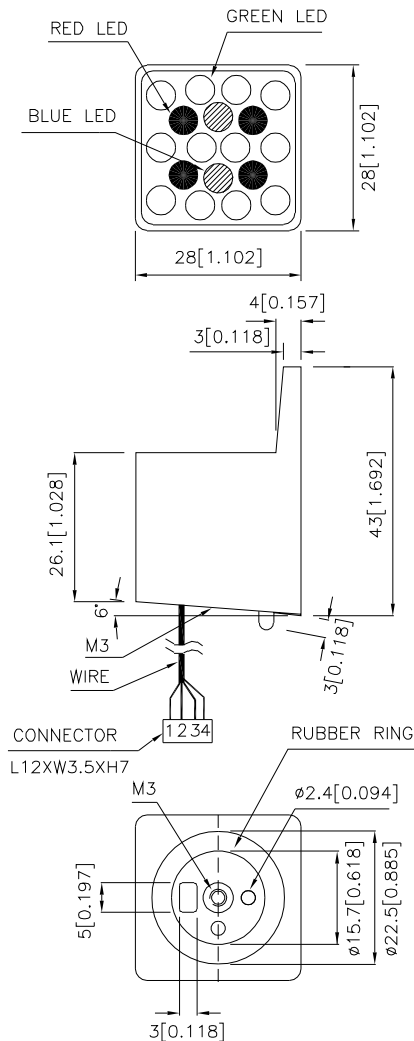
BL0709-18-76

SUPER BRIGHT RED
BLUE
SUPER BRIGHT GREEN

Features

- HIGH VISIBILITY.
- WATER PROOF PACKAGE WITH HOOD SUITABLE FOR OUTDOOR AND INDOOR INFORMATION BOARDS.
- CAN PRODUCE ANY COLOR IN VISIBLE SPECTRUM, INCLUDING WHITE LIGHT.
- RoHS COMPLIANT.

Package Dimensions



Description

The Super Bright Red source color devices are made with Gallium Aluminum Arsenide Red Light Emitting Diode. The Blue source color devices are made with GaN on SiC Light Emitting Diode.

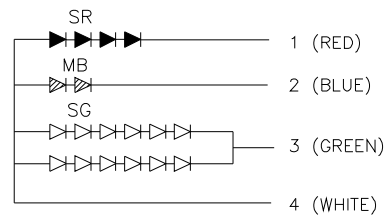
Static electricity and surge damage the LEDs.

It is recommended to use a wrist band or anti-electrostatic glove when handling the LEDs.

All devices, equipment and machinery must be electrically grounded.

The Super Bright Green source color devices are made with Gallium Phosphide Green Light Emitting Diode.

W1583SRC-11.7 X4Pcs
W1583MBC-11.7 X2Pcs
W1583SGC-11.7 X12Pcs



Notes:

1. All dimensions are in millimeters (inches).
2. Tolerance is $\pm 0.25(0.01)$ " unless otherwise noted.
3. Specifications are subjected to change without notice.

Electrical / Optical Characteristics at T_A=25°C

Symbol	Parameter	Device	Type.	Min	Typ.	Max.	Units	Test Conditions
I _v	Luminous Intensity	BL0709-18-76	SR	900	1800	-	mcd	I _F =20mA
			MB	18	70	-		I _F =20mA
			SG	650	1200	-		I _F =40mA
2θ _{1/2}	Viewing Angle		-	-	40	-	deg	-
V _F	Forward Voltage		SR	-	7.4	10	V	I _F =20mA
			MB	-	7.6	9		I _F =20mA
			SG	-	13.2	15		I _F =40mA
λ _{peak}	Peak Wavelength		SR	-	660	-	nm	I _F =20mA
			MB	-	430	-		I _F =20mA
			SG	-	565	-		I _F =40mA
λ _D	Dominant Wavelength	SR	-	640	-	nm	I _F =20mA	
		MB	-	466	-		I _F =20mA	
		SG	-	568	-		I _F =40mA	
Δλ _{1/2}	Spectral Line Half-width	SR	-	20	-	nm	I _F =20mA	
		MB	-	60	-		I _F =20mA	
		SG	-	30	-		I _F =40mA	
I _R	Reverse Current	-	-	-	40	uA	V _R = 5V	

Absolute Maximum Ratings at T_A=25°C

Parameter	Value			Units
	SR	MB	SG	
Total Power dissipation	1100			mW
DC Forward Current	30	30	50	mA
Reverse Voltage	5			V
Operating Temperature	-40°C To +70°C			
Storage Temperature	-40°C To +85°C			