

7.0 mm x 5.0 mm XO

C85F series

Description:

The C85F Crystal Oscillator (XO) Series products provide a wide range of options in temperature stability, operating frequency range, and ultra low phase jitter in a 7.0 x 5.0 mm ceramic package.



Features:

- Available in frequencies from 19.44 MHz to 320 MHz.
- Tri-state Enable/Disable
- Hermetically sealed ceramic SMD package
- RoHS-6/Leadfree compliant
- Integrated jitter 0.3 pS max.
- PECL and LVDS outputs

Frequency Range, Operating Temperature, and Frequency Stability:

Frequency	Operating Temperature	Product Code	Freq. Stability	Product Code
19.44 to 320MHz	-10 to +60C	A	+/- 25 ppm	A
	0 to +70C	B	+/- 50 ppm	B
	-20 to 70C	C	+/- 75 ppm	C
	-40 to 85C	D	+/-100ppm	D

- ***Frequency stability includes 25C tolerance, drift over temperature, change versus voltage and load, 20 year aging, shock and vibration

Aging: (typical at 20MHz after 30 days continuous operation)

Frequency	Timeframe	Aging	Product Code
20 MHz	1st Year	+/- 5.0ppm	N/A

Supply Voltage (Vs):

Power Supply (Vs)	2.5 Vdc +/-10%	3.3 Vdc +/-10%
Product Code	A	B

Supply Voltage Sensitivity (+/- 10%) : +/- 2 ppm max. frequency change

Current Consumption (I_{DD}):

Frequency Range (MHz)	I _{DD} (at 2.5V)	I _{DD} (at 3.3V)
	PECL / LVDS	PECL / LVDS
	mA	mA
19.440 to 160.000	75 / 50	75 / 50
160.000 to 250.000	100 / 50	100 / 50
250.000 to 320.000	100 / 65	100 / 65

Environmental:

Storage Temperature	-55 to +125 °C
---------------------	----------------

Output Waveform:

	PECL	PECL	LVDS	LVDS
	At 2.5 V	At 3.3 V	At 2.5 V	At 3.3 V
Output Logic 1	1.475 Vmin	2.275Vmin	1.6Vmax	1.6Vmax
Output Logic 0	1.095 Vmax	1.680Vmax	0.9Vmin	0.9Vmin
Rise/Fall Time (nS)	1 max	1 max	1 max	1 max

Start-up Time: 3 mS max.

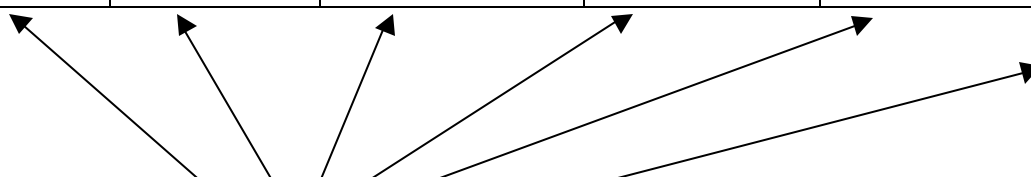
Tri-state function Pin 1 or Pin 2:

Pin 1 or 2 = Output Active with 2.0 V or 2.5 V on Pin 1 or 2 for 2.5V or 3.3V supply respectively

Pin 1 or 2 = Output in high impedance state when 0.5 volts or less on Pin 1 or 2

Ordering Options:

Product Family	Operating Temperature	Frequency Stability	Supply Voltage	Pin 1 or Pin 2 as Tri-state	Operating Frequency
C85F	A	A	A	A (Pin 1)	XXX.XXXMHz
C85F	B	B	B	B (Pin 2)	XXX.XXXMHz
C85F	C	C			XXX.XXXMHz
C85F	D	D			XXX.XXXMHz

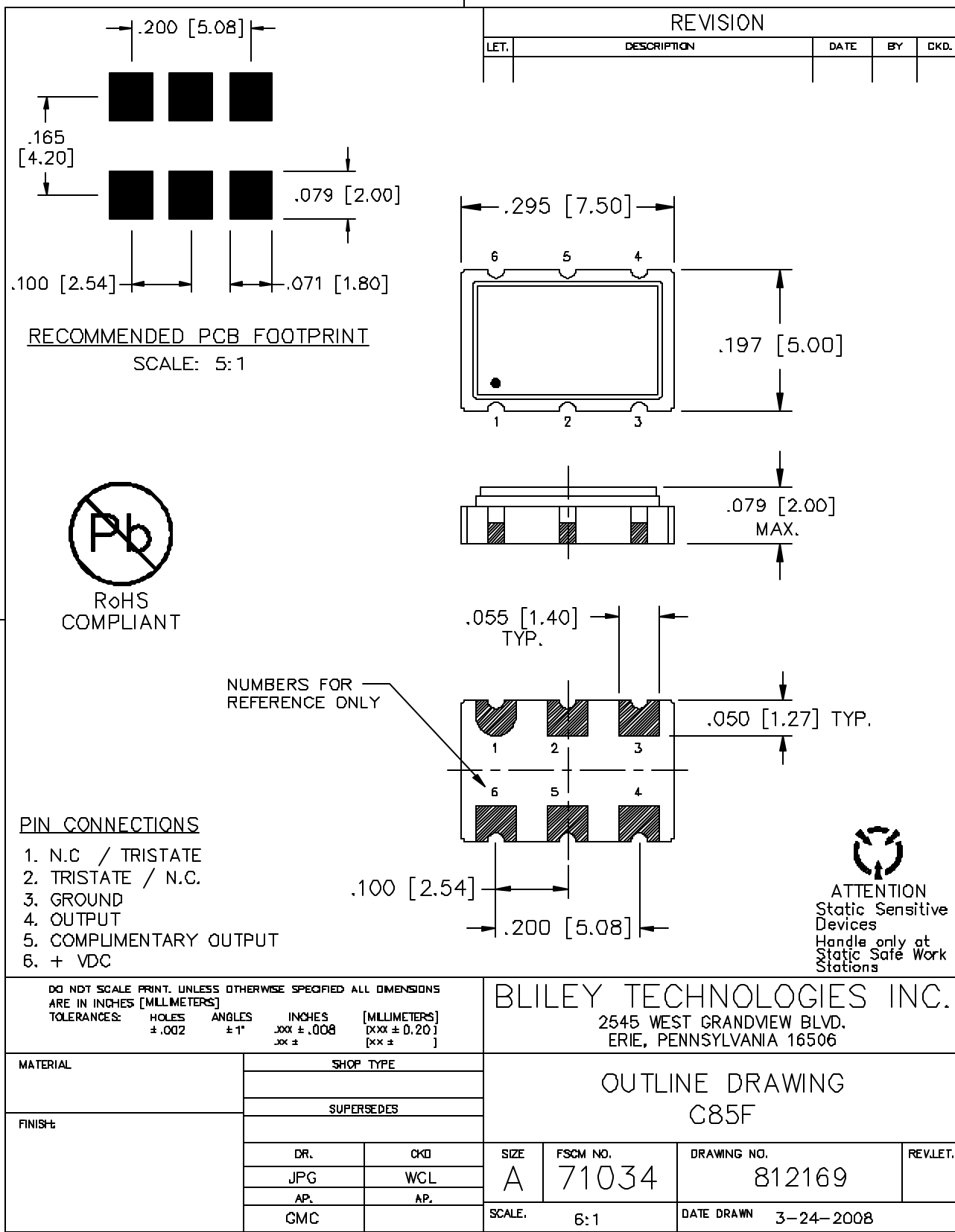


C85F C A B A 155.520MHz
Part Number Build Example

****Consult Bliley sales if other options required**

**** Not all combinations of operating frequency and supply voltage are available.**

RoHs compliant; -20 to 70C; +/- 25 ppm with a 3.3 volt supply; Pin1 as Tri-state; Pin 2 as N/C and 155.520 MHz nominal operating frequency.



PE200-1

How to Order This Product:

Contact Bliley Technologies with Product Selection Code from Ordering Options Section above.

Attn:

Sales @ Bliley

Fax: **814-833-2712**

Phone: 814-838-3571

Email: info@bliley.com

Web: www.bliley.com

Date: _____

From:

Name: _____ Company: _____

Fax: _____ Phone: _____

Email: _____

Quantities to Quote: _____ Target Price: \$_____

Application / Reference #: _____