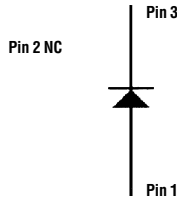
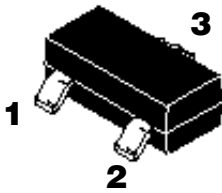
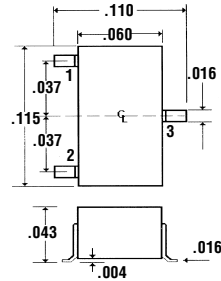


**BAS16**

**Description**



**Mechanical Dimensions**

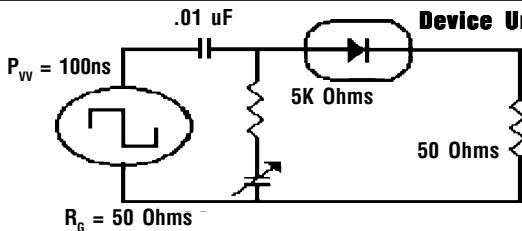


**Features**

- PLANAR PROCESS
- 200 mW POWER DISSIPATION

- INDUSTRY STANDARD SOT-23 PACKAGE
- MEETS UL SPECIFICATION 94V-0

<b>BAS16</b>		<b>Units</b>
<b>Maximum Ratings</b>		
Peak Reverse Voltage... $V_{RM}$	85	Volts
RMS Reverse Voltage... $V_{R(rms)}$	75	Volts
Average Forward Rectified Current... $I_O$	215	mAmps
Non-Repetitive Peak Forward Surge Current... $I_{FSM}$	4	Amps
Power Dissipation... $P_D$	200	mW
Operating Temperature Range... $T_J$	-25 to 85	°C
Storage Temperature Range... $T_{STRG}$	-65 to 150	°C
<b>Electrical Characteristics</b>		
Maximum Forward Voltage... $V_F$ @ $I_F = 150$ mA	1.25	Volts
Maximum DC Reverse Current... $I_R$ @ $V_R = 75V$	1.0	μAmps
Maximum Frequency... $f$	100	MHz
Maximum Diode Capacitance... $C_D$	2.0	pF
Maximum Reverse Recovery Time... $t_{RR}$	4.0	ns



**Device Under Test**

