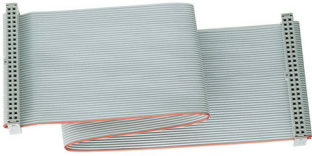


ACCESSORIES

CABLE ASSEMBLIES



Several standard cable assemblies to connect controllers to our I/O module mounting racks may be ordered. The 72-CHH cable has a 50-pin header connector on each end to mate with those on mounting racks. The 72-CHE cable has a 50-pin header connector on one end and a 50-pin edge card connector on the other.

TEST MODULES



Modules for use in system set up and testing may be ordered. Modules 70M-ISW1 and 70G-ISW1 simulates an input; 70M-OSW1 switch simulates an output.

ORDERING INFORMATION

| Part Number | Description |
|-------------------------|--|
| Cable Assemblies | |
| 72-CHH-1 | Ribbon cable assembly, header to header, 1 foot long |
| 72-CHH-2 | Ribbon cable assembly, header to header, 2 feet long |
| 72-CHH-4 | Ribbon cable assembly, header to header, 4 feet long |
| 72-CHH-6 | Ribbon cable assembly, header to header, 6 feet long |
| 72-CHE-2 | Ribbon cable assembly, header to edge card, 2 feet long |
| 72-CHE-4 | Ribbon cable assembly, header to edge card, 4 feet long |
| 72-CHE-6 | Ribbon cable assembly, header to edge card, 6 feet long |
| Test Modules | |
| 70L-ISW | Input module test switch, OpenLine® package |
| 70G-ISW1 | Input module test switch, G5 package |
| 70M-ISW1 | Input module test switch, mini package |
| 70M-OSW1 | Output module test switch, 3 amp, mini package |
| Fuses | |
| 70-FUSE-3AC | Fuse, 3.15A, 5x20mm, used on all AC Digital Output Modules |
| 70-FUSE-3DC | Fuse, 3.15A, 5x20mm, used on all Solid State OpenLine® DC Digital Output Modules |
| 70-FUSE-H | Fuse holder for Output Modules, used on all Digital Output Modules |

FUSE KITS

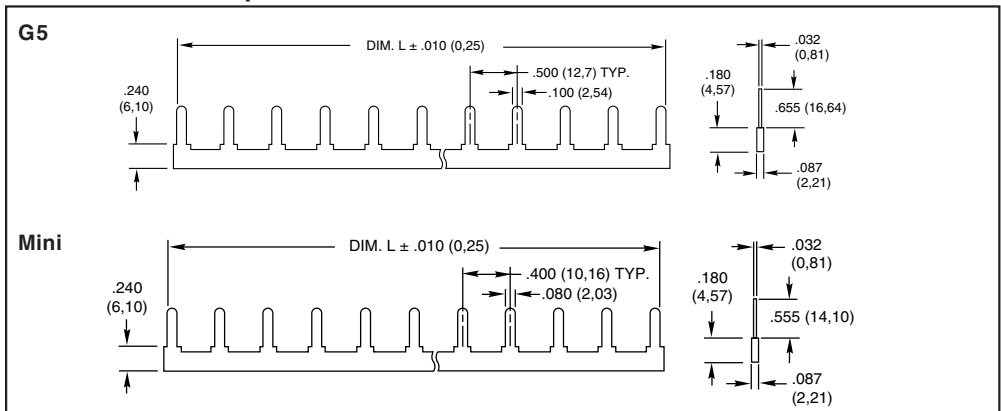
Fuse and fuse holder Replacement kits of 10 can be ordered directly from Grayhill.

Controller Boards, I/O Modules, Module Racks, and Accessories are available through Authorized Grayhill Industrial Distributors. For prices and discounts, contact your local sales office, an authorized Industrial Distributor, or Grayhill.

SYSTEM 50 JUMPER BARS

Grayhill jumper bars are available for applications that require common terminals to be bussed together on digital I/O mounting racks. Jumper bars are available for both our Mini and G5 racks. Grayhill jumper bars are made from .032" thick tin-plated brass. The jumper bars are insulated with a molded sleeve for excellent dielectric properties.

DIMENSIONS: Jumper Bars



ORDERING INFORMATION: Jumper Bars for Grayhill G5 and Mini Series I/O Racks

| Part Number | Description | Dimension "L" in. (mm) | Use on Grayhill I/O Rack |
|-------------|--------------------------------------|------------------------|---|
| 70G-JUMP8 | 8 position jumper for G5 I/O racks | 3.60 (91,44) | 70GRCK8-HL, 70GRCK16-HL, 70GRCM32-HL, 70GRCP32-HL, 70GRCK16I, 70GRCK16T |
| 70G-JUMP12 | 12 position jumper for G5 I/O racks | 5.60 (142,24) | 70GRCK24-HL |
| 70M-JUMP6 | 6 position jumper for Mini I/O racks | 2.08 (52,83) | 70MRCQ24-HL |
| 70M-JUMP8 | 8 position jumper for Mini I/O racks | 2.88 (73,15) | 70MRCK8-HL, 70MRCK16-HL, 70MRCK24-HL |