

4-WAY POWER DIVIDER

SURFACE MOUNT MODEL: SPD-90-210

OPTIMIZED BANDWIDTH

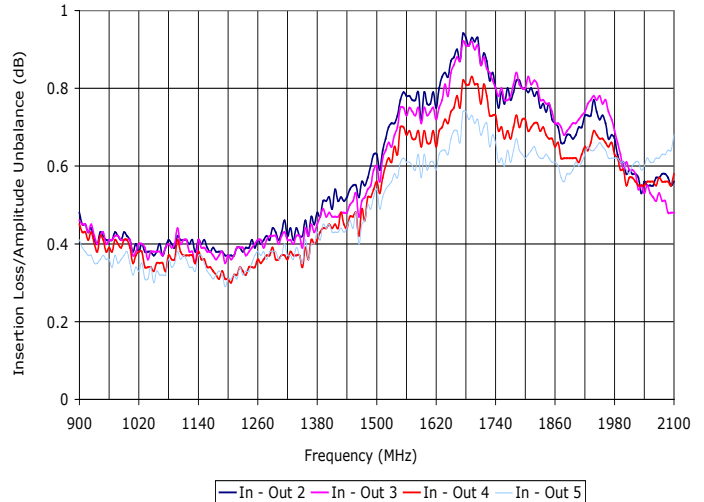
900 - 2100 MHz

FEATURES:

- ▶ Excellent Performance
- ▶ Small Size, Surface Mount
- ▶ Moderate Power
- ▶ Lead Free RoHS Compliant

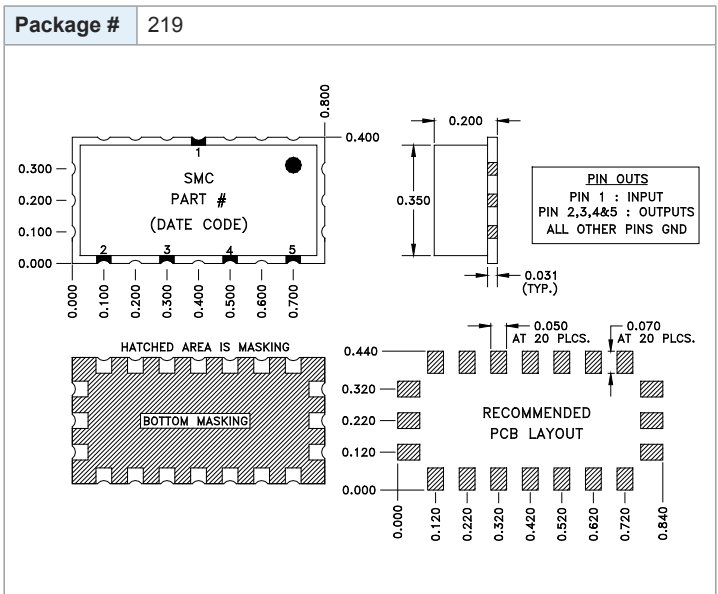
APPLICATIONS:

- ▶ Signal Splitting & Low Power Combining



SPECIFICATIONS (Rev. A 03/12/07)

Frequency	900 - 2100 MHz	
Insertion Loss (dB) *	Typ.	Max.
	0.9	1.25
Isolation (dB)	Typ.	Min.
	20	15
Phase Unbalance (Deg.)	Typ.	Max.
	3.0°	6.0°
Amplitude Unbalance (dB)	Typ.	Max.
	0.2	0.5
Input Power	1 Watt (Max.)	
Output Impedance	50 Ohms (Nom.)	
Operating Temperature Range	-40 to +85 °C	
* Above 6 dB theoretical split loss.		



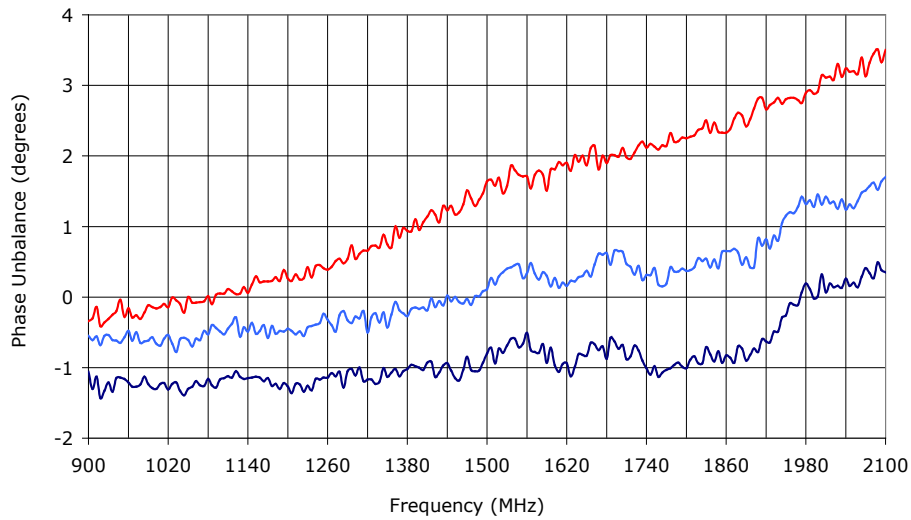
4-WAY POWER DIVIDER

SURFACE MOUNT MODEL: SPD-90-210

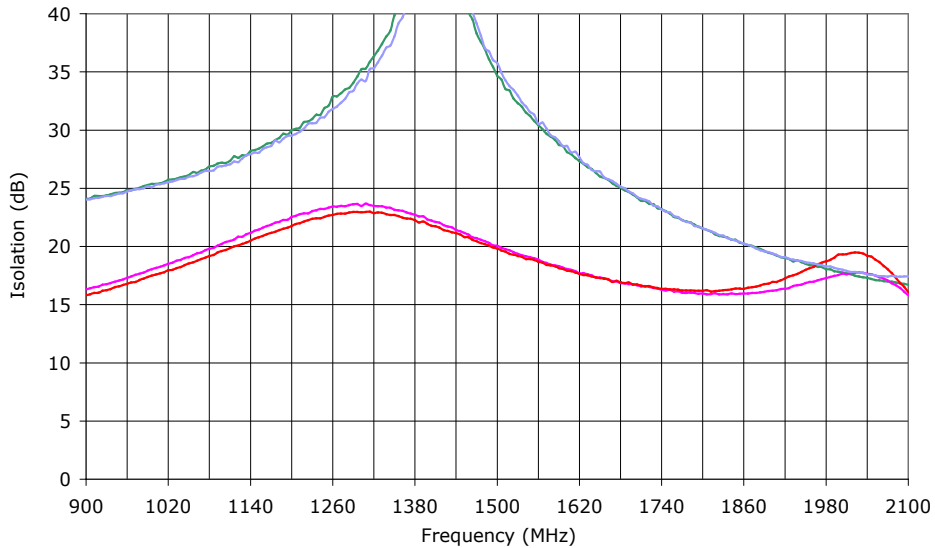
OPTIMIZED BANDWIDTH

900 - 2100 MHz

PERFORMANCE PLOTS



— In - Out 3 — In - Out 4 — In - Out 5



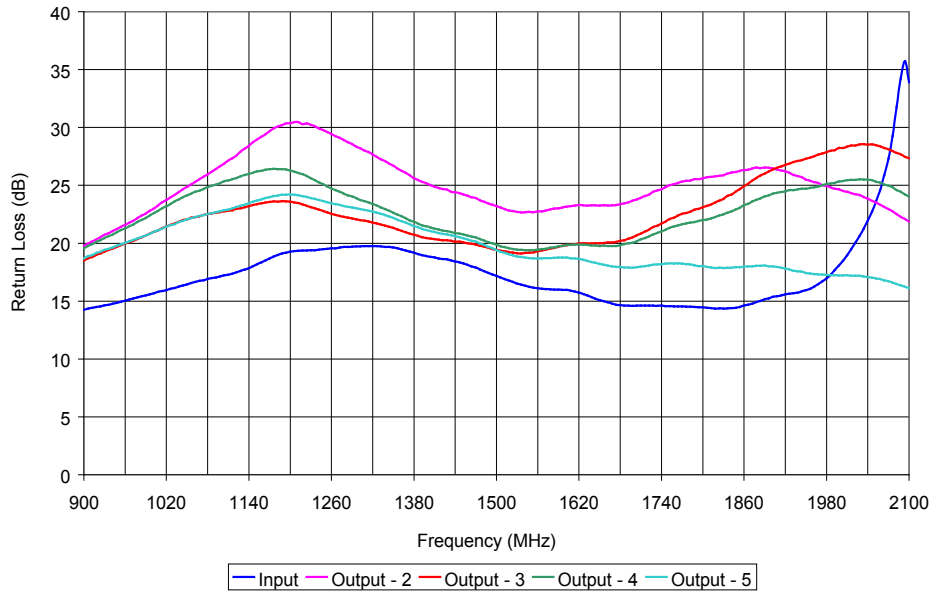
— 2 - 4 — 2 - 3 — 4 - 5 — 3 - 5

4-WAY POWER DIVIDER

SURFACE MOUNT MODEL: SPD-90-210

OPTIMIZED BANDWIDTH

900 - 2100 MHz



PERFORMANCE PLOTS