

SUPER FAST RECTIFIERS

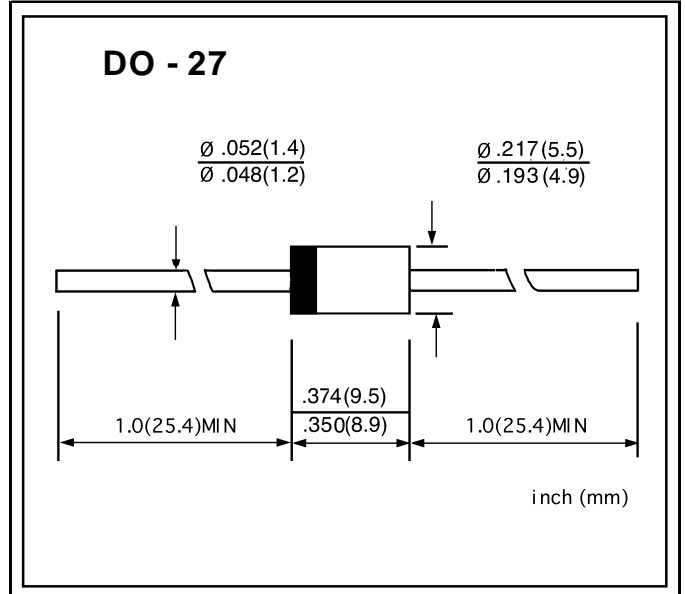
VOLTAGE RANGE: 200 V
CURRENT: 3.5 A

FEATURES

- ◇ Low cost
- ◇ Diffused junction
- ◇ Low leakage
- ◇ Low forward voltage drop
- ◇ High current capability
- ◇ Easily cleaned with freon, alcohol, Isopropanol and similar solvents
- ◇ The plastic material carries U/L recognition 94V-0

MECHANICAL DATA

- ◇ Case: JEDEC DO-27, molded plastic
- ◇ Terminals: Axial leads, solderable per MIL-STD-202, Method 208
- ◇ Polarity: Color band denotes cathode
- ◇ Weight: 0.041 ounces, 1.15 grams
- ◇ Mounting: Any



MAXIMUM RATINGS AND ELECTRICAL CHARACTERISTICS

Ratings at 25°C ambient temperature unless otherwise specified.

Single phase, half wave, 60Hz, resistive or inductive load. For capacitive load, derate by 20%.

| | | RL4Z | UNITS |
|---|-----------------|------------------|--------------------|
| Maximum recurrent peak reverse voltage | V_{RRM} | 200 | V |
| Maximum RMS voltage | V_{RMS} | 140 | V |
| Maximum DC blocking voltage | V_{DC} | 200 | V |
| Maximum average forward rectified current 9.5mm lead length, @ $T_A=75^\circ\text{C}$ | $I_{F(AV)}$ | 3.5 | A |
| Peak forward surge current 8.3ms single half-sine-wave superimposed on rated load @ $T_J=125^\circ\text{C}$ | I_{FSM} | 80.0 | A |
| Maximum instantaneous forward voltage @ 3.5A | V_F | 0.95 | V |
| Maximum reverse current @ $T_A=25^\circ\text{C}$ at rated DC blocking voltage @ $T_A=100^\circ\text{C}$ | I_R | 150.0 500.0 | μA |
| Maximum reverse recovery time (Note1) | t_{rr} | 35 | ns |
| Typical junction capacitance (Note2) | C_J | 95 | pF |
| Typical thermal resistance (Note3) | $R_{\theta JL}$ | 8 | $^\circ\text{C/W}$ |
| Operating junction temperature range | T_J | - 55 ----- + 150 | $^\circ\text{C}$ |
| Storage temperature range | T_{STG} | - 55 ----- + 150 | $^\circ\text{C}$ |

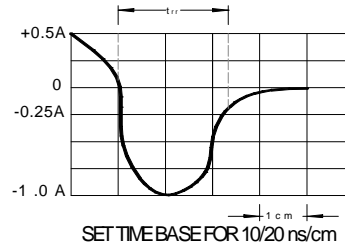
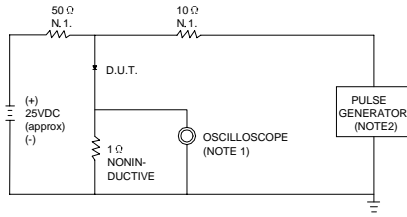
NOTE: 1. Measured with $I_F=0.5\text{A}$, $I_R=1\text{A}$, $t_{rr}=0.25\text{A}$.

2. Measured at 1.0MHz and applied reverse voltage of 4.0V DC.

3. Thermal resistance from junction to ambient.

www.galaxycn.com

FIG.1 – TEST CIRCUIT DIAGRAM AND REVERSE RECOVERY TIME CHARACTERISTIC



NOTES: 1. RISE TIME = 7ns MAX INPUT IMPEDANCE = 1MΩ, 22pF.
2. RISE TIME = 10ns MAX SOURCE IMPEDANCE = 50 Ω.

FIG.2 – TYPICAL FORWARD CHARACTERISTIC

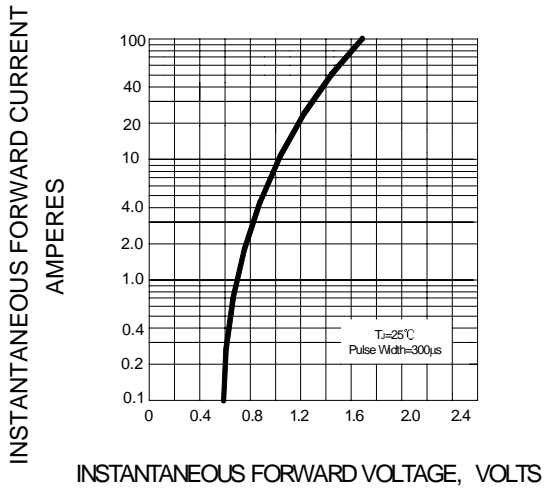


FIG.3 – FORWARD DERATING CURVE

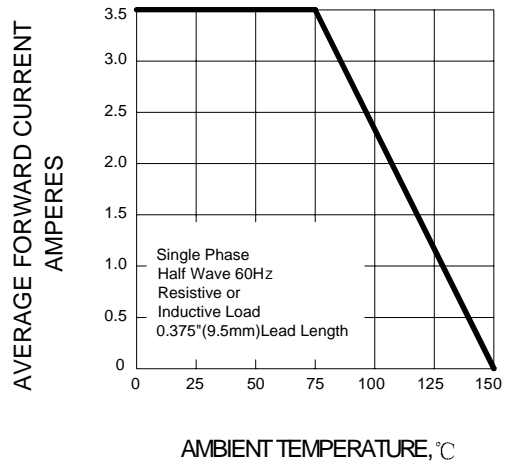


FIG.4 – PEAK FORWARD SURGE CURRENT

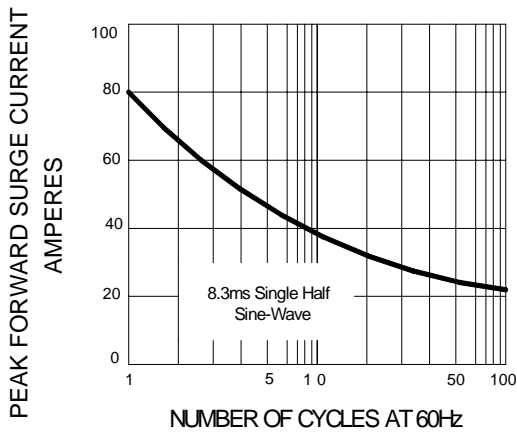


FIG.5 – TYPICAL JUNCTION CAPACITANCE

