

QUADRATURE HYBRID MODEL DQK-100-500*

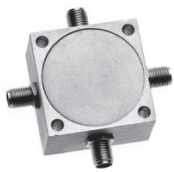
5:1 BANDWIDTH

100 - 500 MHz

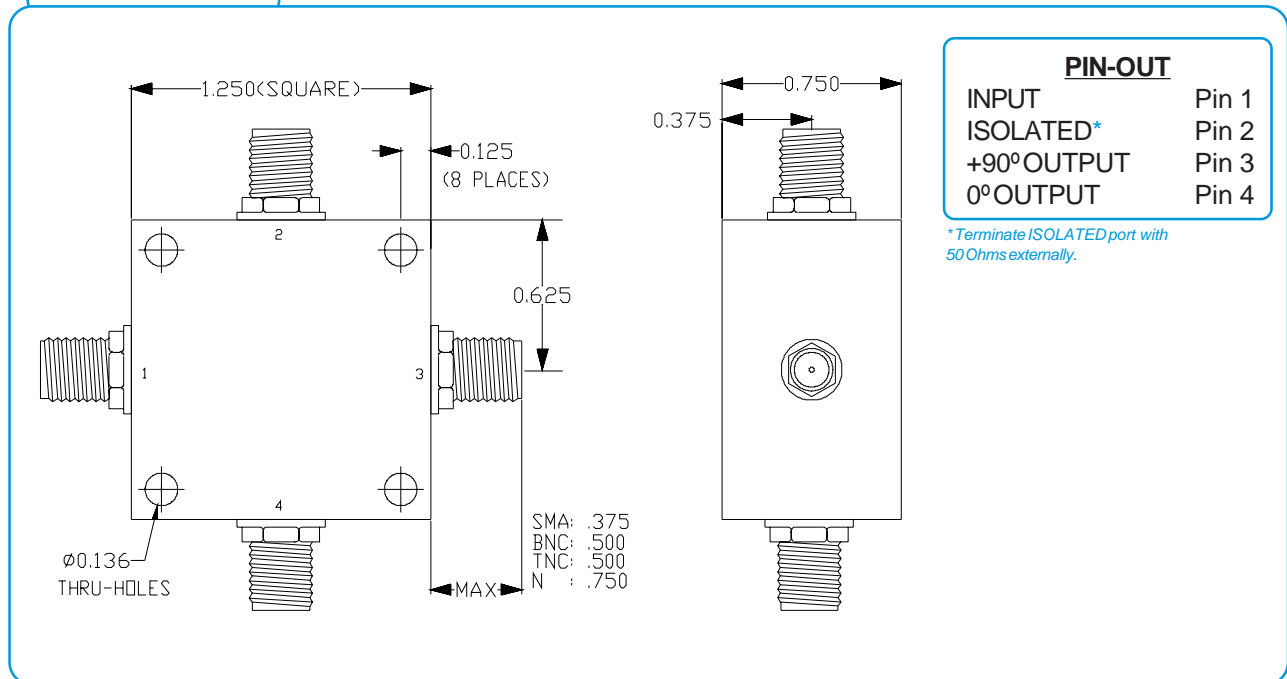
SPECIFICATIONS

Operating Frequency:	100 - 500 MHz	Phase Unbalance:	3.0° (Typ)/ 5.0° (Max)
Insertion Loss:	1.2 dB (Typ) / 1.5 dB (Max)	VSWR:	1.3:1 (Max)
Isolation:	25 dB (Typ)/16 dB (Min)	Input Power Rating	1 Watt (Max)
Amplitude Unbalance:	0.8 dB (Typ) / 1.2 dB (Max)	Impedance:	50 Ohms
		Operating Temp. Range:	-55° to +100°C

* Select connector suffix: "B" = BNC, "S" = SMA, "N" = Type N, "T" = TNC



MECHANICAL OUTLINE: 113

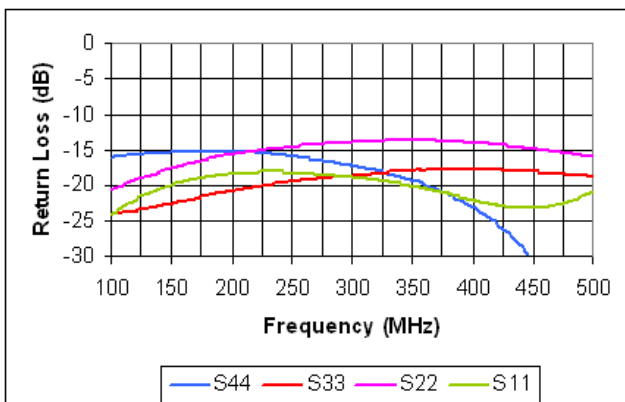
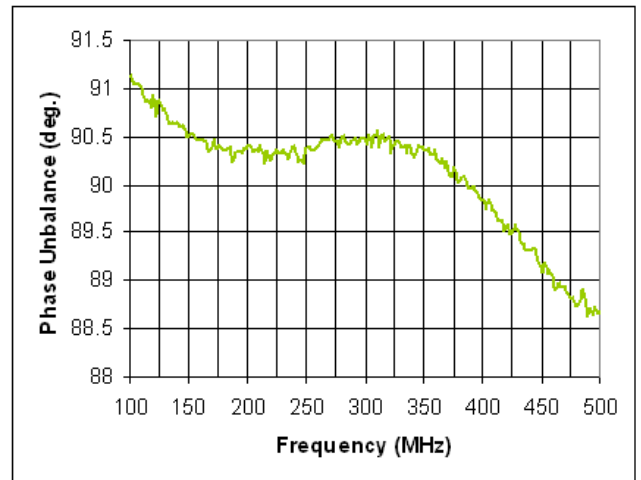
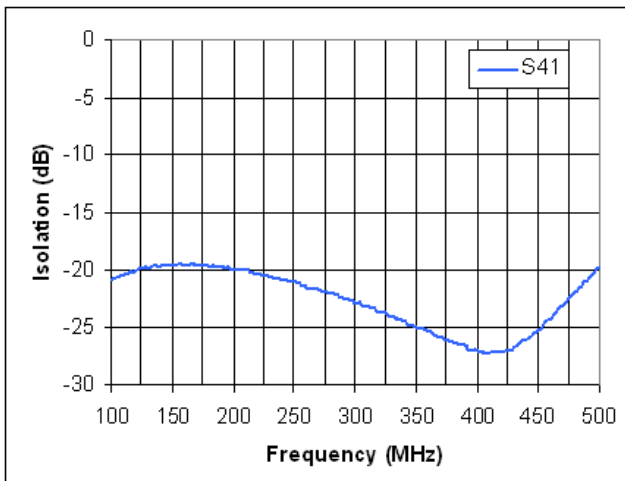
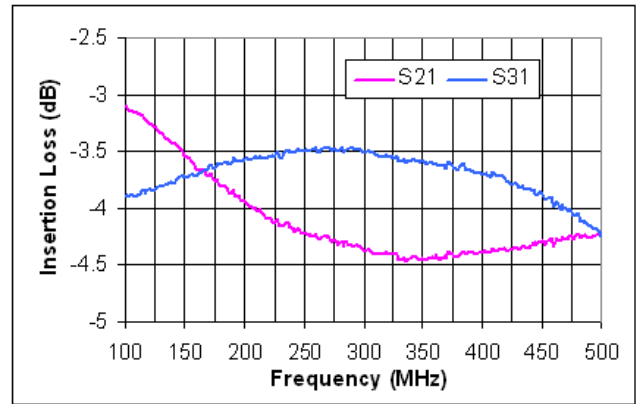
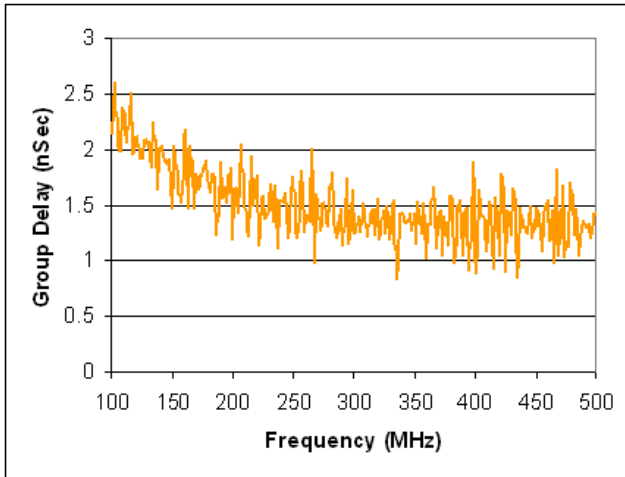


QUADRATURE HYBRID MODEL DQK-100-500*

5:1 BANDWIDTH

100 - 500 MHz

PERFORMANCE PLOTS



Copyright © 2003 Synergy Microwave Corporation

201 McLean Boulevard • Paterson, New Jersey 07504 • Tel: (973) 881-8800 • Fax: (973) 881-8361
E-Mail: sales@synergymw.com • World Wide Web: http://www.synergymw.com

