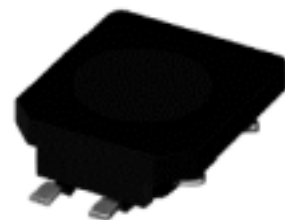
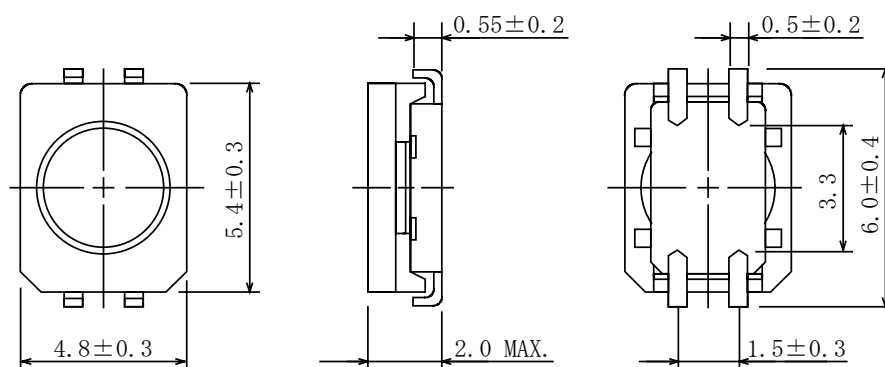
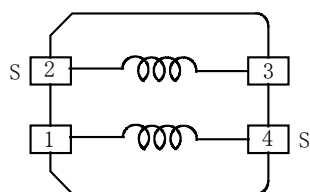


Type: CLQ61B
◆ Product Description

- 5.7×5.1mm Max.(L×W), 2.0mm Max.(Height)
- Inductance Range: 4.7 μ H~33 μ H, Rated current range: 0.37A~0.80A
- In addition to the typical versions of parameters shown here, custom designs are available to meet your exact requirements


◆ Feature

- Magnetically shielded construction.
- Max. Operating frequency 1MHz, Max Operating power 700mW (1MHz)
- Ideally used in Digital still camera, Digital video camera, LCD TV, Portable equipment.
- RoHS Compliance

◆ Dimensions (mm)

◆ Schematics (Bottom)


"S" indicates winding start.

◆ Land Pattern (mm)

◆ Specification

Sample No.	Inductance (2-3) (100kHz/1.0V)	D.C.R. (2-3)	D.C.R. (4-1)
6335-T020	10 μ H \pm 30% within	800m Ω Max.	2.10 Ω Max.

※ 1.Rated current: The D.C. current at which the inductance decreases to 90% of it's initial value or when $\Delta t=40^{\circ}\text{C}$, whichever is lower($T_a=20^{\circ}\text{C}$).