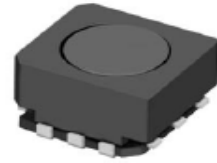
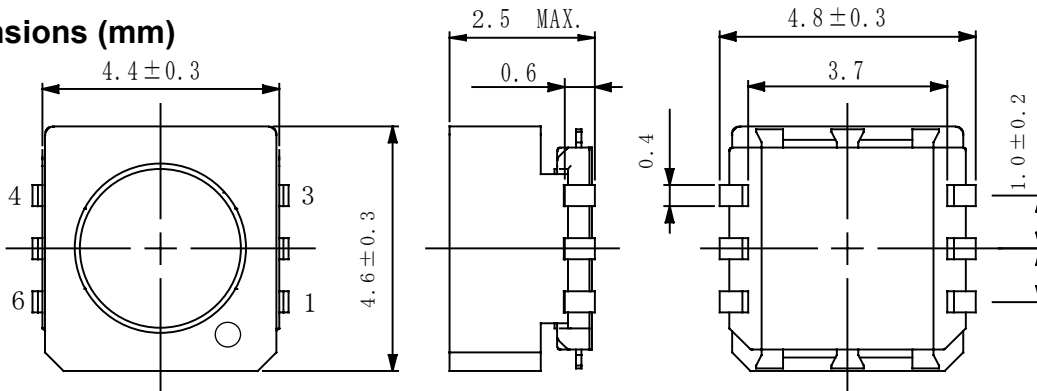


Type: CLQ4D22
◆ Product Description

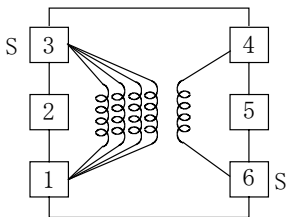
- 4.9×4.7mm Max.(L×W), 2.5mm Max.(Height)
- In addition to the typical versions of parameters shown here, custom designs are available to meet your exact requirements


◆ Feature

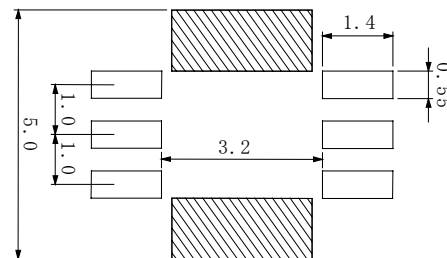
- Magnetically shielded construction.
- Max. Operating frequency 1MHz,
Max. Operating Power 410mW (1MHz), 200mW(500kHz), 120mW(300kHz)
- Ideally used in Digital still camera, Digital video camera, LCD TV, Portable equipment.
- RoHS Compliance

◆ Dimensions (mm)


* Dimension does not include solder used on coil.

◆ Schematics (Bottom)


" S " indicates winding start.

◆ Land Pattern (mm)

◆ Specification

Sample No.	Inductance (3-1) (100kHz/1.0V)	D.C.R. (3-1)	Hi-pot (1,3-4,6) (0.5mA)
10309-T003	$5.0 \mu \text{ H} \pm 30\%$ within	$290 \text{ m} \Omega \text{ Max.}$	DC 300V/2sec.