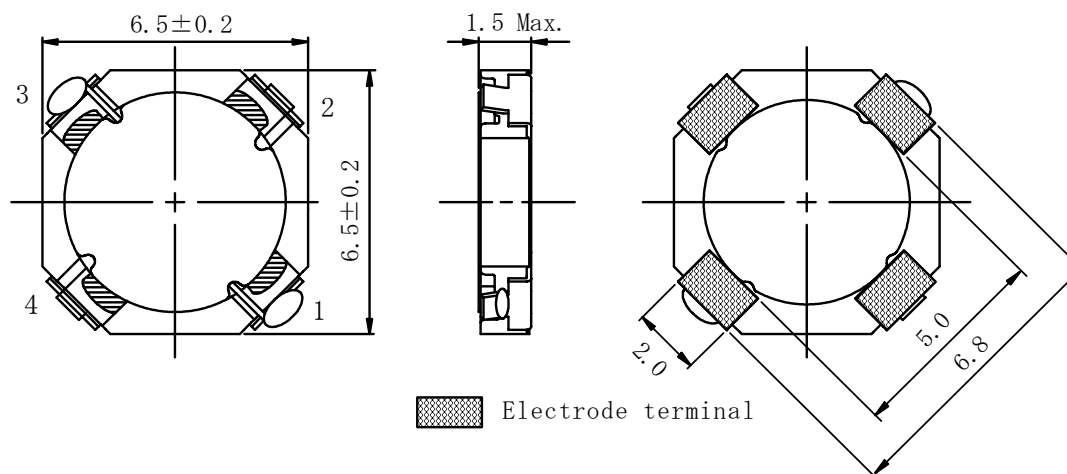
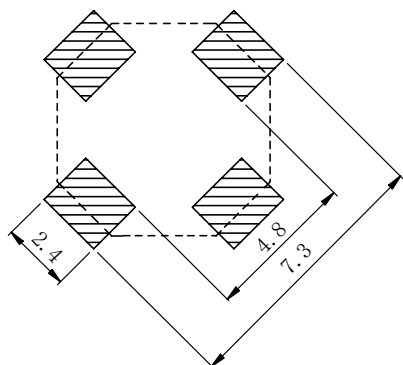


Type: CDRH6D12, CDRH6D12/LD
◆ Product Description

- 6.7×6.7mm Max.(L×W), 1.5mm Max. Height.
- Both standard type CDRH6D12 and Low DCR type CDRH6D12/LD are available.
- Inductance range: 1.0~68 μ H(CDRH6D12), 1.5~47 μ H(CDRH6D12/LD).
- Rated current range: 0.4~2.8A(CDRH6D12) ; 0.48~2.6A(CDRH6D12/LD).
- In addition to the standards versions shown here, custom inductors are also available to meet your exact requirements.


◆ Feature

- Magnetically shielded construction.
- Ideally used in Mobile phone, MP3, PDA ,HDD,DSC/DVC, etc as DC-DC Converter inductors.
- RoHS Compliance.

◆ Dimensions (mm)

◆ Land Pattern (mm)


Type: CDRH6D12, CDRH6D12/LD
◆ Specification (CDRH6D12)

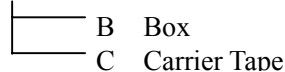
Part Name ※	Stamp	Inductance (μ H) [Within] 100kHz/1V	D.C.R.(m Ω) Max.(Typ.) (at 20°C)	Saturation Current (mA) ※1	Temperature Rise current (mA)※2
CDRH6D12-1R0N□	1R0	1.0±30%	37.5(30.0)	3500	2800
CDRH6D12-1R5N□	1R5	1.5±30%	41.3(33.0)	2800	2500
CDRH6D12-2R2N□	2R2	2.2±30%	50.0(40.0)	2500	2300
CDRH6D12-2R6N□	2R6	2.6±30%	56.3(45.0)	2300	2100
CDRH6D12-3R3N□	3R3	3.3±30%	62.5(50.0)	2200	1900
CDRH6D12-4R2N□	4R2	4.2±30%	75.0(60.0)	1900	1800
CDRH6D12-6R4N□	6R4	6.4±30%	119.0(95.0)	1500	1400
CDRH6D12-100N□	100	10.0±30%	165.0(132.0)	1200	1100
CDRH6D12-150N□	150	15.0±30%	243.8(195.0)	950	900
CDRH6D12-220N□	220	22.0±30%	325.0(260.0)	800	750
CDRH6D12-330N□	330	33.0±30%	500.0(400.0)	650	600
CDRH6D12-470N□	470	47.0±30%	675.0(540.0)	550	500
CDRH6D12-680N□	680	68.0±30%	918.8(735.0)	450	400

◆ Specification (CDRH6D12/LD)

Part Name ※	Stamp	Inductance (μ H) [Within] 100kHz/1V	D.C.R.(m Ω) Max.(Typ.) (at 20°C)	Saturation Current (A) ※1		Temperature Rise current (A)※2
				(at20°C)	(at105°C)	
CDRH6D12LDNP-1R5N□	1R5	1.5±30%	37.4(30.0)	2.60	2.10	2.70
CDRH6D12LDNP-2R2N□	2R2	2.2±30%	43.5(34.8)	2.20	1.80	2.50
CDRH6D12LDNP-2R7N□	2R7	2.7±30%	51.2(40.9)	1.95	1.55	2.20
CDRH6D12LDNP-3R3N□	3R3	3.3±30%	58.8(46.9)	1.80	1.45	2.10
CDRH6D12LDNP-4R7N□	4R7	4.7±30%	74.8(59.8)	1.50	1.20	1.90
CDRH6D12LDNP-5R6N□	5R6	5.6±30%	83.1(66.4)	1.35	1.10	1.65
CDRH6D12LDNP-6R8N□	6R8	6.8±30%	95.3(76.3)	1.25	1.00	1.60
CDRH6D12LDNP-100N□	100	10.0±25%	132(105)	1.00	0.82	1.30
CDRH6D12LDNP-150N□	150	15.0±25%	180(144)	0.85	0.70	1.10
CDRH6D12LDNP-220N□	220	22.0±25%	265(212)	0.68	0.55	0.90
CDRH6D12LDNP-330N□	330	33.0±25%	436(349)	0.60	0.48	0.65
CDRH6D12LDNP-470N□	470	47.0±25%	603(482)	0.48	0.38	0.55

※ Description of Part Name

CDRH6D12LDNP-1R5N□



※1. Saturation current: The DC current at which the inductance decreases to 65% of its nominal value.

 ※2. Temperature rise current: The DC current at which the temperature rise is $\Delta t=40^{\circ}\text{C}$. ($T_a=20^{\circ}\text{C}$).