



SURFACE MOUNT SWITCHING DIODES

VOLTAGE 100 Volts **POWER** 350mWatts

FEATURES

- Fast switching speed.
- Surface mount package Ideally Suited for Automatic insertion
- Electrically Identical to Standard JEDEC
- High Conductance
- Pb free product are available : Pb free 99% Sn above can meet Rohs environment substance directive request

MECHANICAL DATA

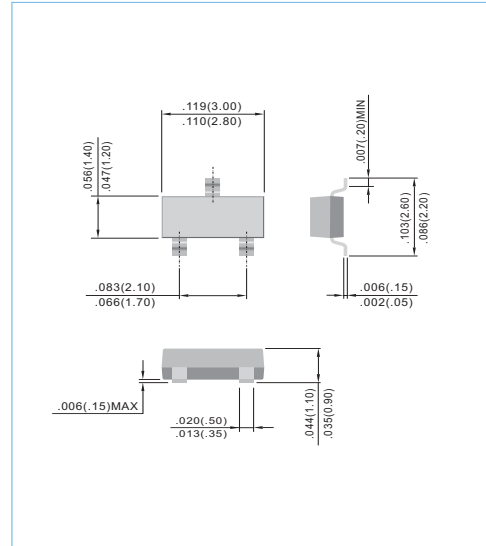
Case: SOT-23, Plastic

Terminals: Solderable per MIL-STD-202G, Method 208

Approx. Weight: 0.008 gram

Marking Code: A6

SOT-23 Unit: inch (mm)



MAXIMUM RATINGS AND ELECTRICAL CHARACTERISTICS

Ratings at 25°C ambient temperature unless otherwise specified.

Single phase, half wave, 60 Hz, resistive or inductive load.

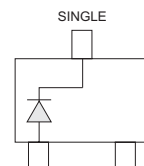
For capacitive load, derate current by 20%.

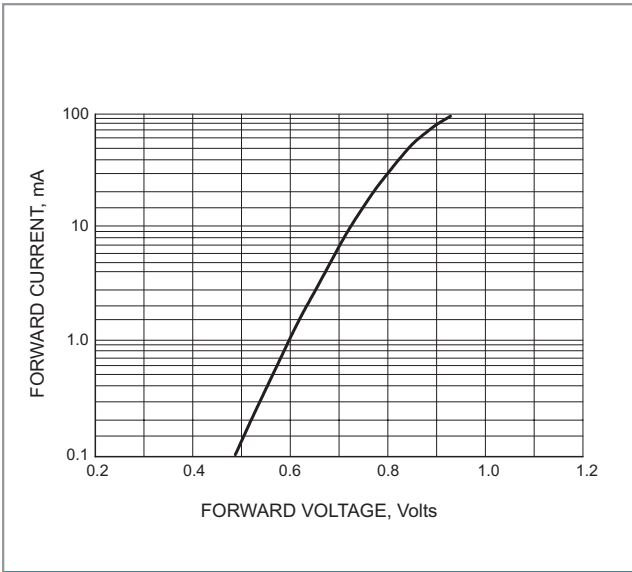
| PARAMETER | SYMBOL | BAS16 | UNITS |
|---|------------------|-------------|--------|
| Reverse Voltage | V _R | 75 | V |
| Peak Reverse Voltage | V _{RM} | 100 | V |
| Rectified Current (Average), Half Wave Rectification with Resistive Load and f >=50 Hz | I _o | 250 | mA |
| Peak Forward Surge Current, 8.3ms single half sine-wave superimposed on rated load (JEDEC method) | I _{FSM} | 2 | A |
| Power Dissipation Derate Above 25°C | P _{TOT} | 350 | mW |
| Maximum Forward Voltage @ I _F =0.01A | V _F | 0.855 | V |
| Maximum DC Reverse Current at Rated DC Blocking Voltage T _J = 25°C | I _R | 1 | uA |
| Typical Junction Capacitance(Notes1) | C _J | 2 | pF |
| Maximum Reverse Recovery (Notes2) | T _{RR} | 6 | ns |
| Maximum Thermal Resistance | RθJA | 357 | °C / W |
| Storage Temperature Range | T _J | -55 TO +125 | °C |

NOTE:

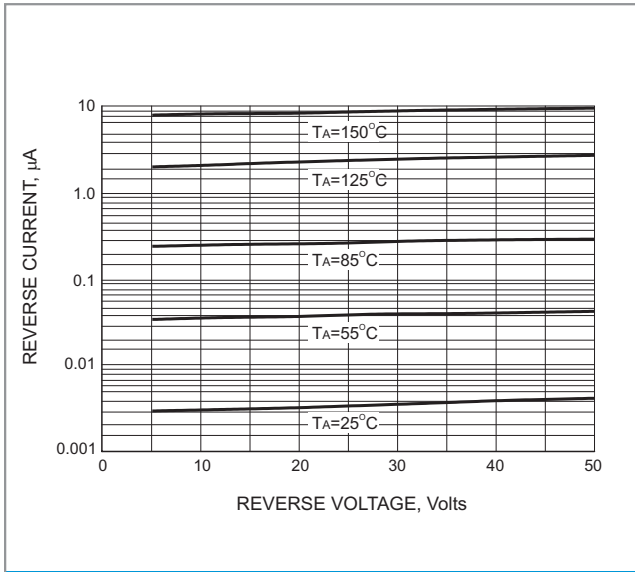
1. C_J at V_R=0, f=1MHZ

2.From I_F=10mA to I_R=1mA, V_R=6Volts, R_L=100Ω

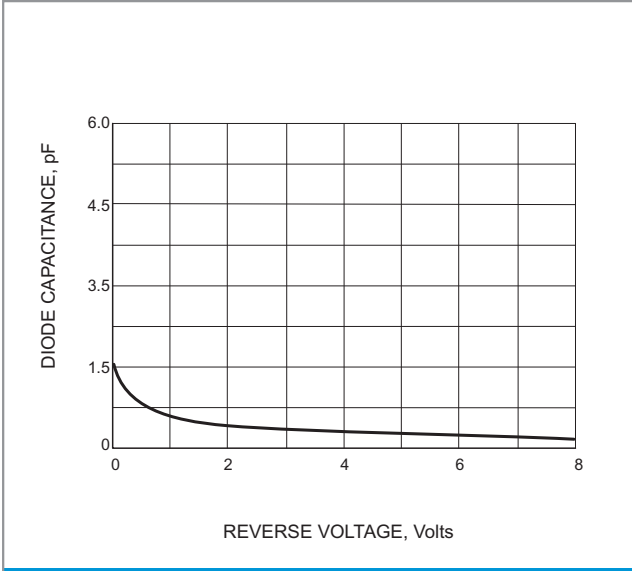




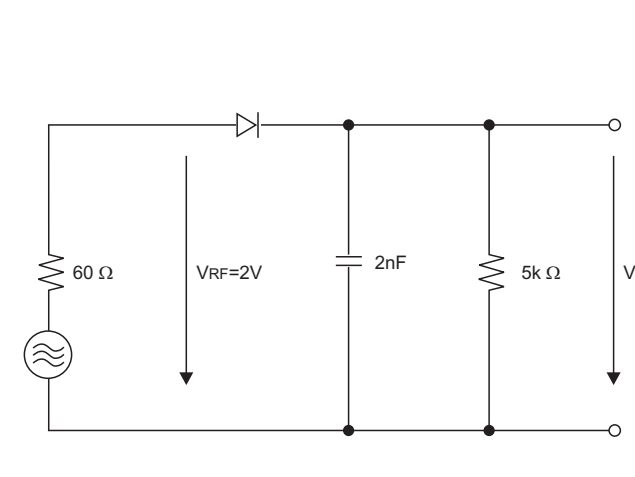
FORWARD VOLTAGE



LEAKAGE CURRENT



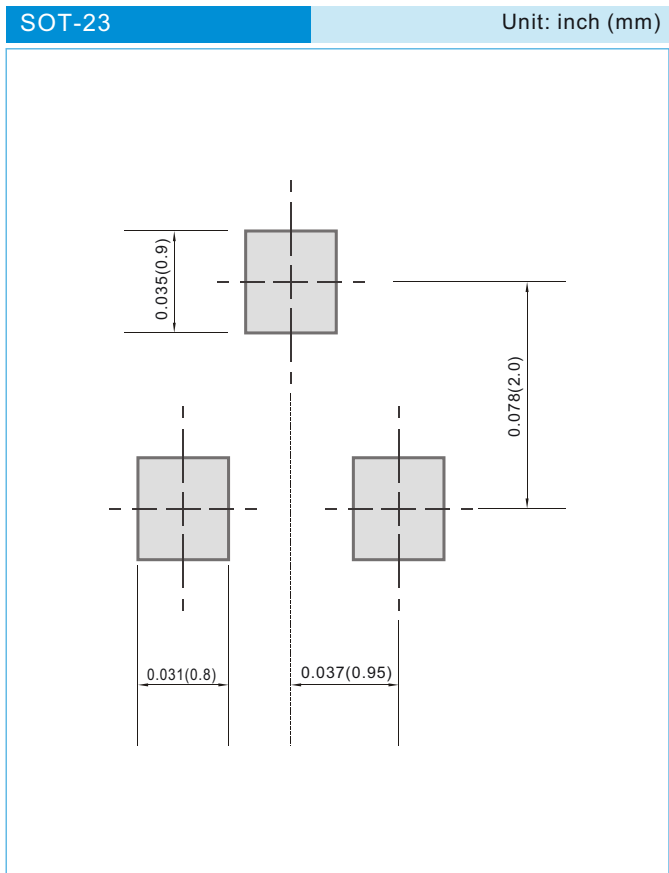
TYPICAL CAPATICANCE



RECTIFICATION EFFICIENCY MEASUREMENT CIRCUIT



MOUNTING PAD LAYOUT



ORDER INFORMATION

- Packing information
 - T/R - 12K per 13" plastic Reel
 - T/R - 3.0K per 7" plastic Reel

LEGAL STATEMENT

IMPORTANT NOTICE

This information is intended to unambiguously characterize the product in order to facilitate the customer's evaluation of the device in the application. The information will help the customer's technical experts determine that the device is compatible and interchangeable with similar devices made by other vendors. The information in this data sheet is believed to be reliable and accurate. The specifications and information herein are subject to change without notice. New products and improvements in products and product characterization are constantly in process. Therefore, the factory should be consulted for the most recent information and for any special characteristics not described or specified.

Copyright Pan Jit International Inc. 2003

All rights reserved. Reproduction in whole or in part is prohibited without the prior written consent of the copyright owner.

The information presented in this document does not form part of any quotation or contract. The information presented is believed to be accurate and reliable, and may change without notice in advance. No liability will be accepted by the publisher for any consequence of use. Publication thereof does not convey nor imply any license under patent or other industrial or intellectual property rights.