

**NARROWBAND FM COILLESS DETECTOR IF SUBSYSTEM FOR CELLULAR AND ANALOG APPLICATIONS**  
SEMICONDUCTOR TECHNICAL DATA

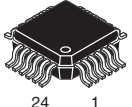
**Legacy Device:** Motorola MC13150

The ML13150 is a narrowband FM IF subsystem targeted at cellular and other analog applications. The ML13150 has an onboard Colpitts VCO that can be crystal controlled or phased lock for second LO in dual conversion receivers. The mixer is a double balanced configuration with excellent third order intercept. It is useful to beyond 200 MHz. The IF amplifier is split to accommodate two low cost cascaded filters. RSSI output is derived by summing the output of both IF sections., The quadrature detector is a unique design eliminating the conventional tunable quadrature coil.

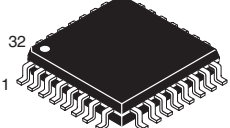
Applications for the ML13150 include cellular, CT-1, 900 MHz cordless telephone, data links and other radio systems utilizing narrowband FM modulation.

- Linear Coilless Detector
- Adjustable Demodulator Bandwidth
- 2.5 to 6.0 Vdc Operation
- Low Drain Current <2.0 mA
- Typical Sensitivity of 2.0  $\mu$ V for 12 dB SINAD
- IIP3, Input Third Order Intercept Point of 0 dBm

- RSSI Range of Greater Than 100 dB
- Internal 1.4 k $\Omega$  Terminations for 455 kHz Filters
- Split IF for Improved filtering and Extended RSSI Range
- Operating Temperature Range - T<sub>A</sub> = -40° to +85°C



**ML13150-A9P**  
PLASTIC PACKAGE  
(LQFP-24)

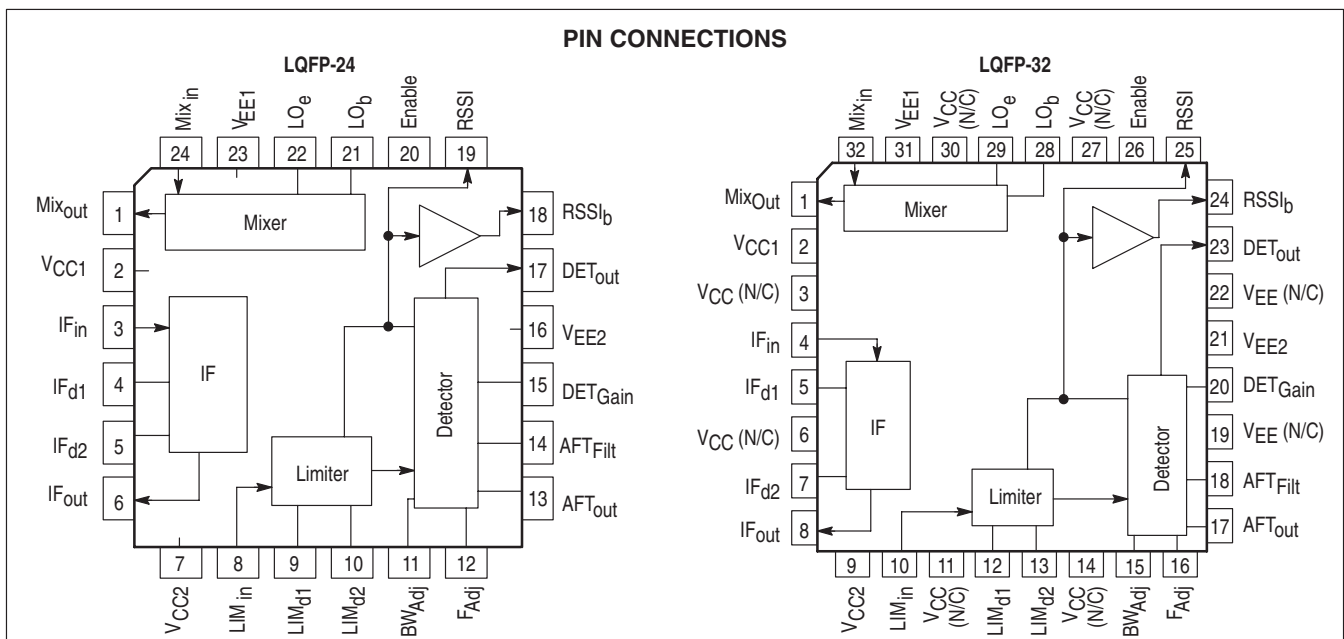


**ML13150-B9P**  
PLASTIC PACKAGE  
(LQFP-32)

<u>PACKAGE</u>	<u>MOTOROLA</u>	<u>LANSDALE</u>
LQFP-24	MC13150FTA	ML13150-A9P
LQFP-32	MC13150FTB	ML13150-B9P

**CROSS REFERENCE/ORDERING INFORMATION**

**Note:** Lansdale lead free (Pb) product, as it becomes available, will be identified by a part number prefix change from ML to MLE.



**MAXIMUM RATINGS**

Rating	Pin	Symbol	Value	Unit
Power Supply Voltage	2, 9	V <sub>CC</sub> (max)	6.5	Vdc
Junction Temperature	-	T <sub>Jmax</sub>	+150	C
Storage Temperature Range	-	T <sub>stg</sub>	-65 to +150	C

**NOTE:** 1. Devices should not be operated at or outside these values. The "Recommended Operating Limits" provide for actual device operation.  
2. ESD data available upon request.

**RECOMMENDED OPERATING CONDITIONS**

Rating	Pin	Symbol	Value	Unit
Power Supply Voltage (See Figure 22)	T <sub>A</sub> = 25 C -40 C T <sub>A</sub> 85 C 2, 9 21, 31	V <sub>CC</sub> V <sub>EE</sub>	2.5 to 6.0 0	Vdc
Input Frequency	32	f <sub>in</sub>	10 to 500	MHz
Ambient Temperature Range	-	T <sub>A</sub>	-40 to +85	C
Input Signal Level	32	V <sub>in</sub>	0	dBm

**DC ELECTRICAL CHARACTERISTICS** (T<sub>A</sub> = 25 C, V<sub>CC1</sub> = V<sub>CC2</sub> = 3.0 Vdc, No Input Signal.)

Characteristics	Condition	Pin	Symbol	Min	Typ	Max	Unit
Total Drain Current (See Figure 2)	V <sub>S</sub> = 3.0 Vdc	2 + 9	I <sub>TOTAL</sub>	-	1.7	3.0	mA
Supply Current, Power Down (See Figure 3)	-	2 + 9	-	-	40	-	nA

**AC ELECTRICAL CHARACTERISTICS** (T<sub>A</sub> = 25 C, V<sub>S</sub> = 3.0 Vdc, f<sub>RF</sub> = 50 MHz, f<sub>LO</sub> = 50.455 MHz, LO Level = -10 dBm, see Figure 1 Test Circuit\*, unless otherwise specified.)

Characteristics	Condition	Pin	Symbol	Min	Typ	Max	Unit
12 dB SINAD Sensitivity (See Figure 15)	f <sub>mod</sub> = 1.0 kHz; f <sub>dev</sub> = ±5.0 kHz	32	-	-	-100	-	dBm
RSSI Dynamic Range (See Figure 7)	-	25	-	-	100	-	dB
Input 1.0 dB Compression Point Input 3rd Order Intercept Point (See Figure 18)	- -	- -	1.0 dB C. Pt. IIP3	- -	-11 -1.0	- -	dBm
Coilless Detector Bandwidth Adjust (See Figure 11)	Measured with No IF Filters	-	ΔBW adj	-	26	-	kHz/μA

**MIXER**

Conversion Voltage Gain (See Figure 5)	P <sub>in</sub> = -30 dBm; P <sub>LO</sub> = -10 dBm	32	-	-	10	-	dB
Mixer Input Impedance	Single-Ended	32	-	-	200	-	Ω
Mixer Output Impedance	-	1	-	-	1.5	-	kΩ

**LOCAL OSCILLATOR**

LO Emitter Current (See Figure 26)	-	29	-	30	63	100	μA
---------------------------------------	---	----	---	----	----	-----	----

**IF & LIMITING AMPLIFIERS SECTION**

IF and Limiter RSSI Slope	Figure 7	25	-	-	0.4	-	μA/dB
IF Gain	Figure 8	4, 8	-	-	42	-	dB
IF Input & Output Impedance	-	4, 8	-	-	1.5	-	kΩ
Limiter Input Impedance	-	10	-	-	1.5	-	kΩ
Limiter Gain	-	-	-	-	96	-	dB

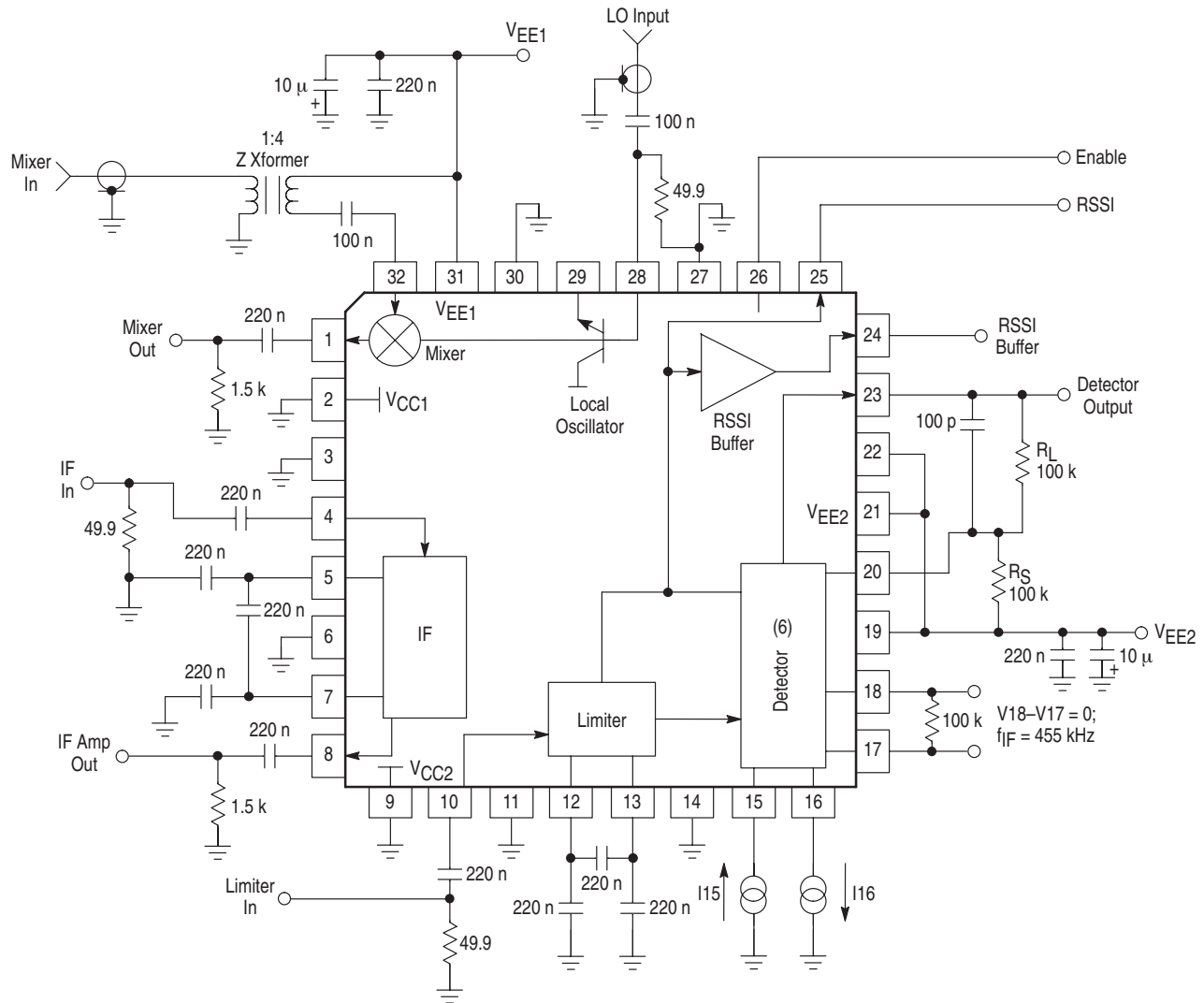
\* Figure 1 Test Circuit uses positive (V<sub>CC</sub>) Ground.

**AC ELECTRICAL CHARACTERISTICS (continued)** ( $T_A = 25^\circ\text{C}$ ,  $V_S = 3.0\text{ Vdc}$ ,  $f_{RF} = 50\text{ MHz}$ ,  $f_{LO} = 50.455\text{ MHz}$ , LO Level = -10 dBm, see Figure 1 Test Circuit\*, unless otherwise specified.)

Characteristics	Condition	Pin	Symbol	Min	Typ	Max	Unit
<b>DETECTOR</b>							
Frequency Adjust Current	Figure 9, $f_{IF} = 455\text{ kHz}$	16	-	41	49	56	$\mu\text{A}$
Frequency Adjust Voltage	Figure 10, $f_{IF} = 455\text{ kHz}$	16	-	600	650	700	mVdc
Bandwidth Adjust Voltage	Figure 12, $I_{15} = 1.0\ \mu\text{A}$	15	-	-	570	-	mVdc
Detector DC Output Voltage (See Figure 25)	-	23	-	-	1.36	-	Vdc
Recovered Audio Voltage	$f_{dev} = \pm 3.0\text{ kHz}$	23	-	85	122	175	mVrms

\* Figure 1 Test Circuit uses positive ( $V_{CC}$ ) Ground.

**Figure 1. Test Circuit**



This device contains 292 active transistors.

## ML13150 CIRCUIT DESCRIPTION

### GENERAL DESCRIPTION

The ML13150 is a very low power single conversion narrowband FM receiver incorporating a split IF. This device can be used as a single conversion or as the backend in analog narrowband FM systems such as 900 MHz cordless phones, and narrowband data links with data rates up to 9.6 k baud. It contains a mixer, oscillator, extended range received signal strength indicator (RSSI), RSSI buffer, IF amplifier, limiting IF, a unique coilless quadrature detector and a device enabler function (see Package Pin Outs/Block Diagram).

### LOW CURRENT OPERATION

The ML13150 is designed for battery and portable applications. Supply current is typically 1.7 mA<sub>dc</sub> at 3.0 V<sub>dc</sub>. Figure 2 shows the supply current versus supply voltage.

### ENABLE

The enable function is provided for battery powered operation. The enabled pin is pulled down to enable the regulators. Figure 3 shows the supply current versus enable voltage, V<sub>enable</sub> (relative to V<sub>CC</sub>) needed to enable the device. Note that the device is fully enabled at V<sub>CC</sub> - 1.3 V<sub>dc</sub>. Figure 4 shows the relationship of the enable current, I<sub>enable</sub>, to enable voltage, V<sub>enable</sub>.

### MIXER

The mixer is a double-balanced four quadrant multiplier and is designed to work up to 500 MHz. It has a single ended input. Figure 5 shows the mixer gain and saturated output response as a function of input signal drive and for -10 dBm LO drive level. This is measured in the application circuit shown in Figure 15 in which a single LC matching network is used. Since the single-ended input impedance of the mixer is 200 Ω, and alternate solution uses a 1:4 impedance transformer to match the mixer to 50 Ω input impedance. The linear voltage gain of the mixer alone is approximately 4.0 dB (plus an additional 6.0 dB for the transformer). Figure 6 shows the mixer gain versus the LO input level for various mixer input levels at 50 MHz RF input.

The buffered output of the mixer is internally loaded, resulting in an output impedance of 1.5kΩ.

### LOCAL OSCILLATOR

The on-chip transistor operates with crystal and LC resonant elements up to 220 MHz. Series resonant, overtone crystals are used to achieve excellent local oscillator stability. 3rd overtone crystals are used through about 65 to 70 MHz. Operation for 70 MHz up to 200 MHz is feasible using the on-chip transistor with a 5th or 7th overtone crystal. To enhance operation using an overtone crystal, the internal transistor's bias is increased by adding an external resistor from Pin 29 (in 32 pin QFP package) to V<sub>EE</sub> to keep the oscillator on continuously or it may be taken to the enable pin to shut is off when the receiver is disabled. -10 dBm of local oscillator drive is needed to adequately drive the mixer (Figure 6). The oscillator configurations specified above are described in the application section.

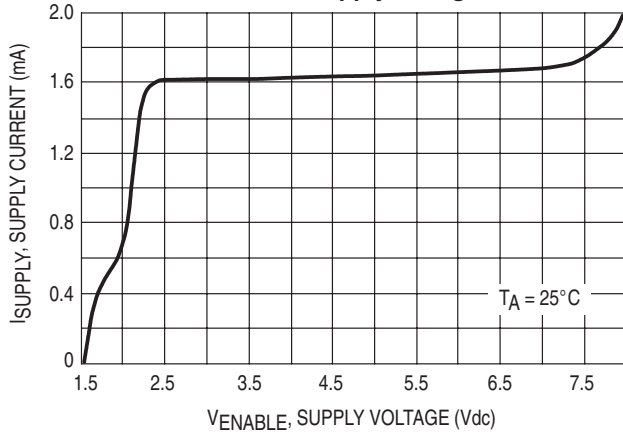
### RSSI

The received signal strength indicator (RSSI) output is a current proportional to the log of the received signal amplitude. The RSSI current output is derived by summing the currents from the IF and limiting amplifier stages. An external resistor at Pin 25 (in 32 pin QFP package) sets the voltage range or swing of the RSSI output voltage. Linearity of the RSSI is optimized by using external ceramic bandpass filters which have an insertions loss of 4.0 dB. The RSSI circuit is designed to provide 100+ dB of dynamic range with temperature compensation (see Figures 7 and 23 which show the RSSI response of the applications circuit).

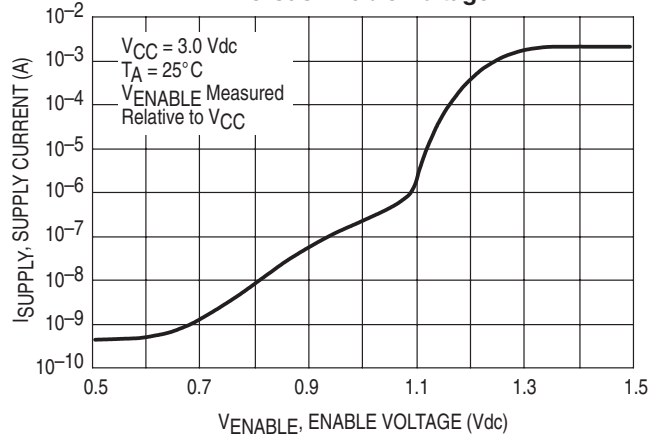
### RSSI BUFFER

The RSSI buffer has limitations in what loads it can drive. It can pull loads well towards the positive and negative supplies, but has problems pulling the load away from the supplies. The load should be biased at half supply to overcome this situation.

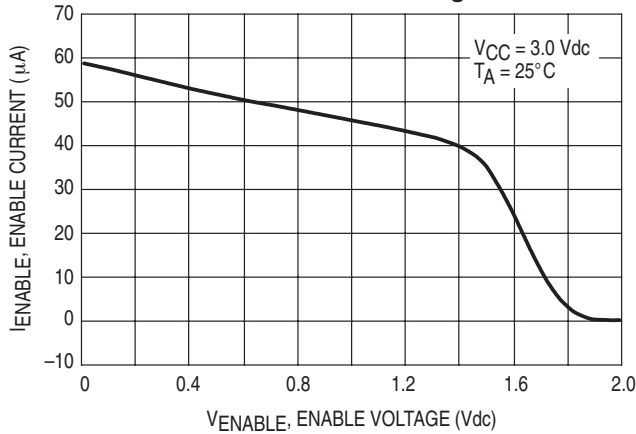
**Figure 2. Supply Current versus Supply Voltage**



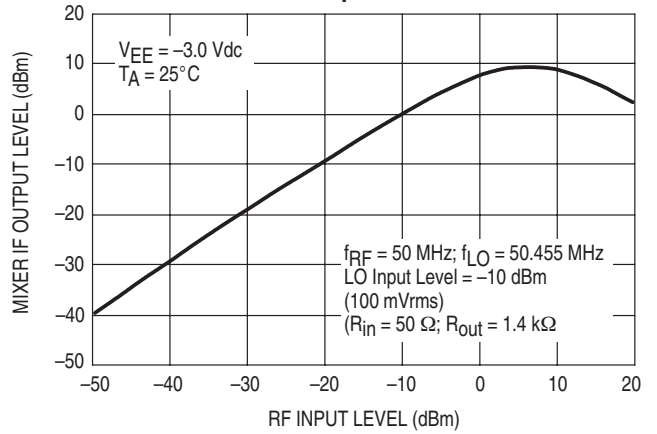
**Figure 3. Supply Current versus Enable Voltage**



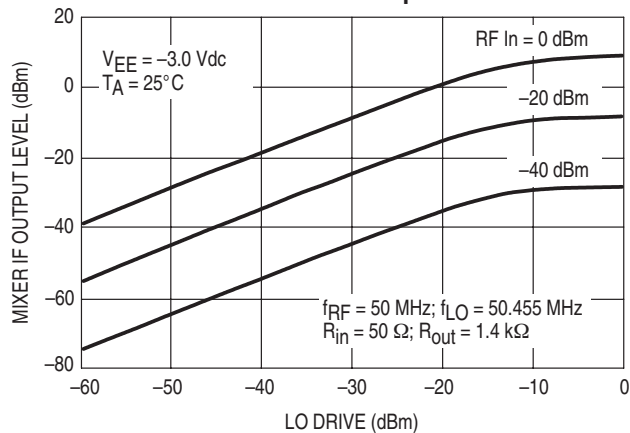
**Figure 4. Enable Current versus Enable Voltage**



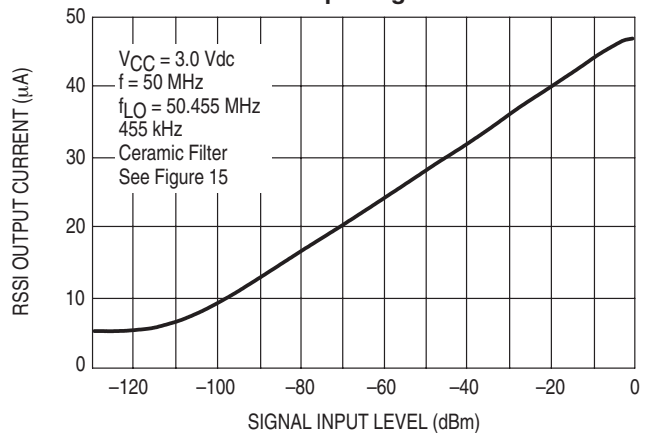
**Figure 5. Mixer IF Output Level versus RF Input Level**



**Figure 6. Mixer IF Output Level versus Local Oscillator Input Level**



**Figure 7. RSSI Output Current versus Input Signal Level**



**IF AMPLIFIER**

The first IF amplifier section is composed of three differential stages. This section has internal dc feedback and external input decoupling for improved symmetry and stability. The total gain of the IF amplifier block is approximately 42 dB at 455 kHz. Figure 8 shows the gain of the IF amplifier as a function of the IF frequency.

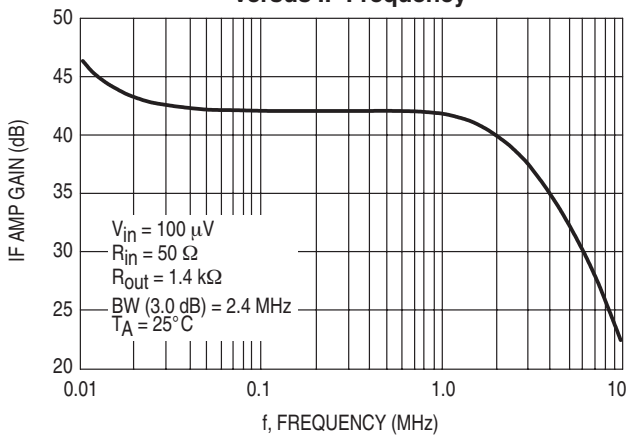
The fixed internal input impedance is 1.5 kΩ; it is designed for applications where a 455 kHz ceramic filter is used and no external output matching is necessary since the filter requires a 1.5 kΩ source and load impedance.

Overall RSSI linearity is dependent on having total midband attenuation of 10 dB (4.0 insertion loss plus 6.0 dB impedance matching loss) for the filter. The output of the IF amplifier is buffered and the impedance is 1.5kΩ.

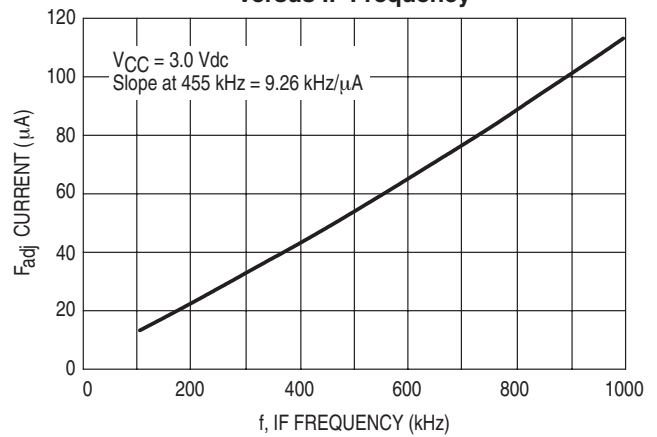
**LIMITER**

The limiter section is similar to the IF amplifier section except that six stages are used. The fixed internal input impedance is 1.5 kΩ. The total gain of the limiting amplifier sections is approximately 96 dB. This IF limiting amplifier section internally drives the quadrature detector section.

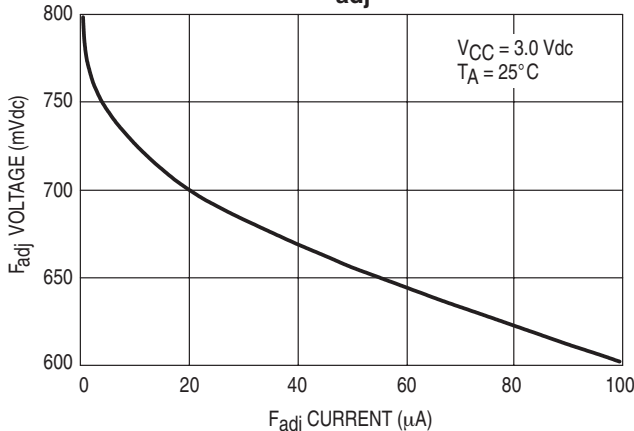
**Figure 8. IF Amplifier Gain versus IF Frequency**



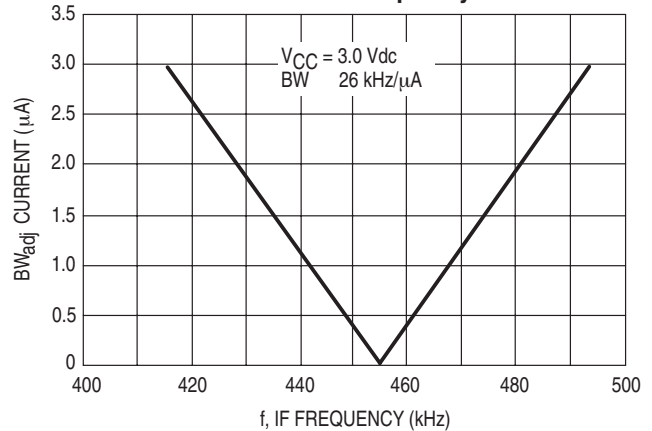
**Figure 9. F<sub>adj</sub> Current versus IF Frequency**



**Figure 10. F<sub>adj</sub> Voltage versus F<sub>adj</sub> Current**



**Figure 11. BW<sub>adj</sub> Current versus IF Frequency**



**COILLESS DETECTOR**

The quadrature detector is similar to a PLL. There is an internal oscillator running at the IF frequency and two detector outputs. One is used to deliver the audio signal and the other one is filtered and used to tune the oscillator.

The oscillator frequency is set by an external resistor at the  $F_{adj}$  pin. Figure 9 shows the control current required for a particular frequency; Figure 10 shows the pin voltage at that current. From this the value of  $R_F$  is chosen. For example, 455 kHz would require a current of around 50  $\mu A$ . The pin voltage (Pin 16 in the 32 pin QFP package) is around 655mV giving a resistor of 13.1 k $\Omega$ . Choosing 12 k $\Omega$  as the nearest standard value gives a current of approximately 55  $\mu A$ . The 5.0  $\mu A$  difference can be taken up by the tuning resistor,  $R_T$ .

The best nominal frequency for the  $AFT_{out}$  pin (Pin 17) would be half supply. A supply voltage of 3.0 Vdc suggests a resistor value of  $(1.5 - 0.655) V / 5.0 \mu A = 169 k\Omega$ . Choosing 150 k $\Omega$  would give a tuning current of  $3 / 150 k\Omega = 20 \mu A$ . From Figure 9 this would give a tuning range of roughly 10 kHz/ $\mu A$  or  $\pm 100$  kHz which should be adequate.

The bandwidth can be adjusted with the help of Figure 11.

For example, 1.0  $\mu A$  would give a band width of  $\pm 13$  kHz. The voltage across the bandwidth resistor,  $R_B$  from Figure 12 is  $V_{CC} - 2.44 V_{dc} = 0.56 V_{dc}$  for  $V_{CC} = 3.0 V_{dc}$ , so  $R_B = 0.56V / 1.0 \mu A = 560 k\Omega$ . Actually the locking range will be  $\pm 13$  kHz while the audio bandwidth will be approximately  $\pm 8.4$  kHz due to an internal filter capacitor. This is verified in Figure 13. For some applications it may be desirable that the audio bandwidth is increased; this is done by reducing  $R_B$ . Reducing  $R_B$  widens the detector bandwidth and improves the distortion at high input levels at the expense of 12 dB SINAD sensitivity. The low frequency 3.0dB point is set by the tuning circuit such that the product

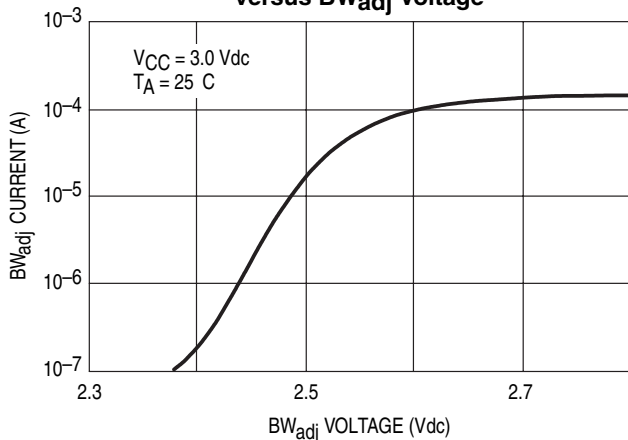
$$RTCT = 0.68/f_{3dB}$$

So, for example, 150 k $\Omega$  and 1.0  $\mu F$  give a 3.0 dB point of 4.5 kHz. The recovered audio is set by  $R_L$  to give roughly 50mV per kHz deviation per 100 k of resistance. The dc level can be shifted by  $R_S$  from the nominal 0.68 V by the following equation:

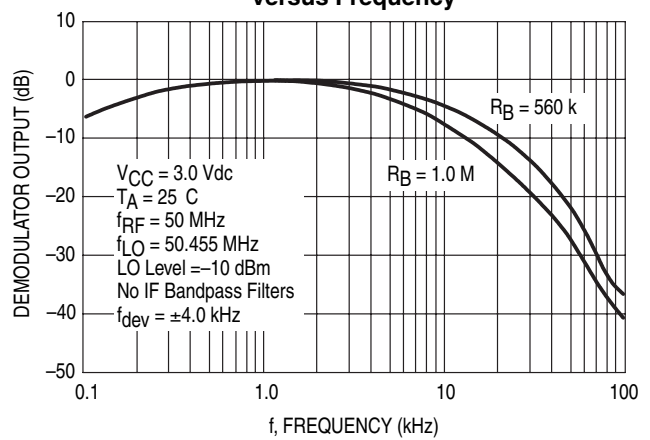
$$\text{Detector DC Output} = ((R_L + R_S) / R_S) 0.68 V_{dc}$$

Thus  $R_S = R_L$  sets the output at  $2 \times 0.68 = 1.36 V$ ;  $R_L = 2R_S$  sets the output at  $3 \times 0.68 = 2.0V$ .

**Figure 12.  $BW_{adj}$  Current versus  $BW_{adj}$  Voltage**



**Figure 13. Demodulator Output versus Frequency**





## Legacy Applications Information

### EVALUATION PC BOARD

The evaluation PCB is very versatile and is intended to be used across the entire useful frequency range of this device. The center section of the board provides an area for attaching all SMT components to the circuit side and radial leaded components to the component ground side (see Figures 29 and 30). Additionally, the peripheral area surrounding the RF core provides pads to add supporting and interface circuitry as a particular application requires. There is an area dedicated for a LNA preamp. This evaluation board will be discussed and referenced in this section.

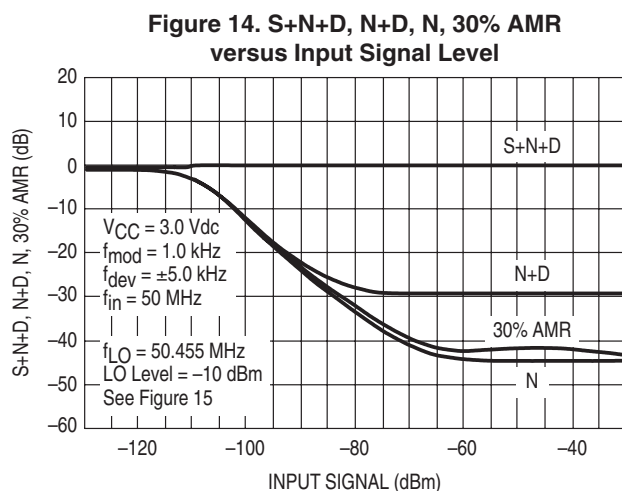
### COMPONENT SELECTION

The evaluation PC board is designed to accommodate specific components, while also being versatile enough to use components from various manufacturers and coil types. The applications circuit schematic (Figure 15) specifies particular components that were used to achieve the results shown in the typical curves but equivalent components should give similar results. Component placement views are shown in Figures 27 and 28 for the application circuit in Figure 15 and for the 83.616 MHz crystal oscillator circuit in Figure 16.

### INPUT MATCHING COMPONENTS

The input matching circuit shown in the application circuit schematic (Figure 15) is a series L, shunt C single L section which is used to match the mixer input to  $50\ \Omega$ . An alternative input network may use 1:4 surface mount transformers or BALUNs. The 12 dB SINAD sensitivity using the 1:4 impedance transformer is typically  $-100\ \text{dBm}$  for  $f_{\text{mod}} = 1.0\ \text{kHz}$  and  $f_{\text{dev}} = \pm 5.0\ \text{kHz}$  at  $f_{\text{in}} = 50\ \text{MHz}$  and  $f_{\text{LO}} = 50.455\ \text{MHz}$  (see Figure 14).

It is desirable to use a SAW filter before the mixer to provide additional selectivity an adjacent channel rejection and improved sensitivity. SAW filters sourced from Toko (Part #SWS083GBWA) and Murata (Part # SAF83.16MA51X) are excellent choices to easily interface with the MC13150 mixer. They are packaged in a 12 pin low profile surface mount ceramic package. The center frequency is 83.161 MHz and the 3.0 dB bandwidth is 30 kHz.







## Legacy Applications Information

## LOCAL OSCILLATORS

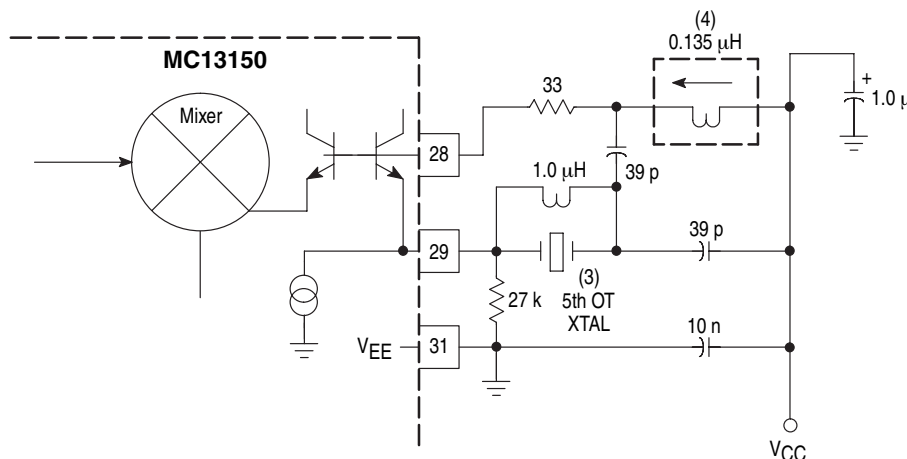
## HF &amp; VHF APPLICATIONS

In the application schematic, an external sourced local oscillator is utilized in which the base is biased via a 51  $\Omega$  resistor to  $V_{CC}$ . However, the on-chip grounded collector transistor may be used for HF and VHF local oscillators with higher order overtone crystals. Figure 16 shows a 5th overtone oscillator at 83.616 MHz. The circuit uses a Butler overtone oscillator configuration. The amplifier is an emitter follower. The crystal is driven from the emitter and is coupled to the high impedance base through a capacitive tap network. Operation at the desired overtone frequency is ensured by the parallel resonant circuit formed by the variable inductor and the tap capacitors and parasitic capacitances of the on-chip transistor and PC board. The variable inductor specified in the schematic could be replaced with a high tolerance, high Q ceramic or air wound surface mount component if the other components have tight enough tolerance. A variable inductor provides an adjustment for gain and frequency of the resonant tank ensuring lock up and start-up of the crystal oscillator. The overtone crystal is chosen with ESR of typically 80  $\Omega$  and 120  $\Omega$  maximum; if the resistive loss in the crystal is too high the performance of oscillator may be impacted by lower gain margins.

A series LC network to ac ground (which is  $V_{CC}$ ) is comprised of the inductance of the base lead of on-chip transistor and PC board traces and tap capacitors. Parasitic oscillations often occur in the 200 to 800 MHz range. A small resistor is placed in series with the base (Pin 28) to cancel the negative resistance associated with this undesired mode of oscillation. Since the base input impedance is so large, a small resistor in the range of 27 to 68  $\Omega$  has very little effect on the desired Butler mode of oscillation.

The crystal parallel capacitance,  $C_0$ , provides a feedback path that is low enough in reactance at frequencies of 5th overtones or higher to cause trouble.  $C_0$  has little effect near resonance because of the low impedance of the crystal motional arm ( $R_m-L_m-C_m$ ). As the tunable inductor, which forms the resonant tank with the tap capacitors, is tuned off the crystal resonant frequency, it may be difficult to tell if the oscillation is under crystal control. Frequency jumps may occur as the inductor is tuned. In order to eliminate this behavior an inductor,  $L_0$ , is placed in parallel with the crystal.  $L_0$  is chosen to be resonant with the crystal parallel capacitance,  $C_0$ , at the desired operation frequency. This inductor provides a feedback path at frequencies well below resonance; however, the parallel tank network of the tap capacitors and tunable inductor prevent oscillation at these frequencies.

**Figure 16. ML13150 Overtone Oscillator**  
 $f_{RF} = 83.16 \text{ MHz}$ ;  $f_{LO} = 83.616 \text{ MHz}$   
 5th Overtone Crystal Oscillator



**RECEIVER DESIGN CONSIDERATIONS**

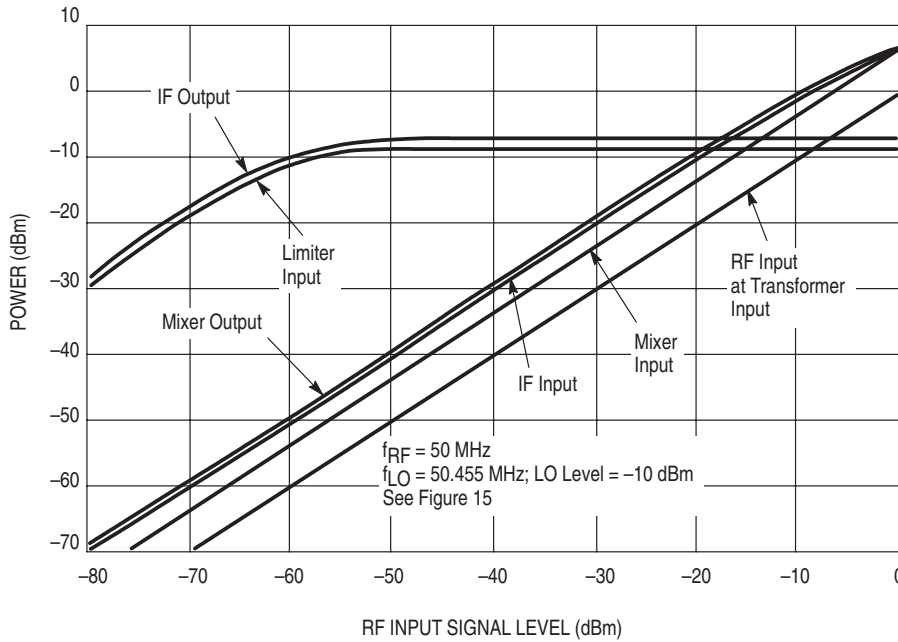
The curves of signal levels at various portions of the application receiver with respect to RF input level are shown in Figure 17. This information helps determine the network topology and gain blocks required ahead of the ML13150 to achieve the desired sensitivity and dynamic range of the receiver system. The PCB is laid out to accommodate a low noise preamp followed by the 83.16 MHz SAW filter. In the

application circuit (Figure 15), the input 1.0 dB compression point is -10 dBm and the input third order intercept (IP3) performance of the system is approximately 0 dBm (see Figure 18).

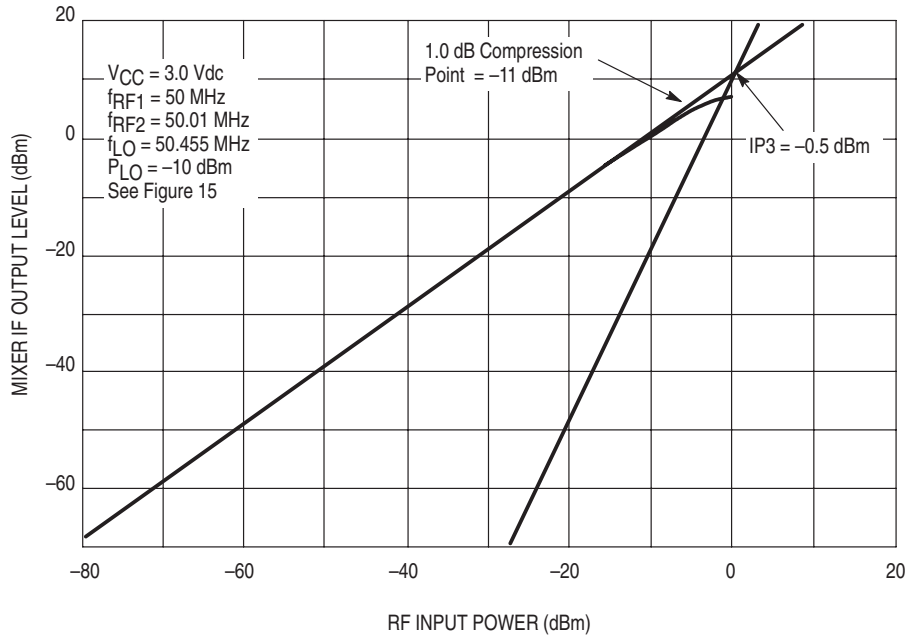
**TYPICAL PERFORMANCE OVER TEMPERATURE**

Figures 19–26 show the device performance over temperature.

**Figure 17. Signal Levels versus RF Input Signal Level**

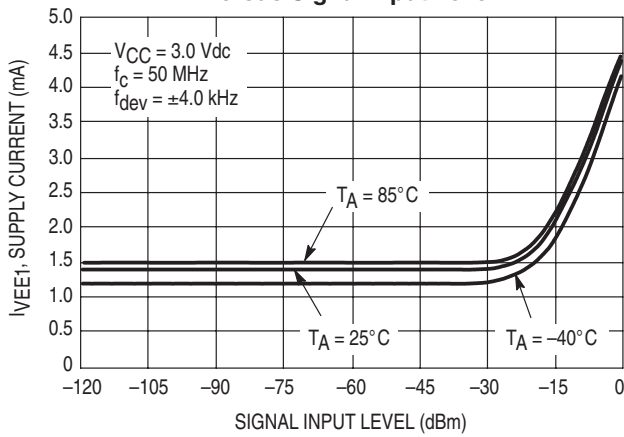


**Figure 18. 1.0 dB Compression Point and Input Third Order Intercept Point versus Input Power**

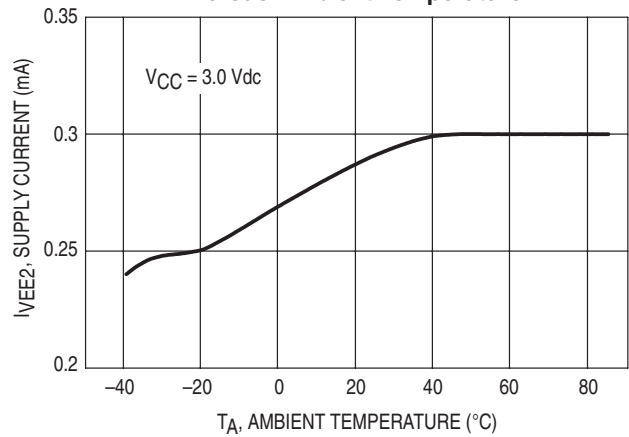


**TYPICAL PERFORMANCE OVER TEMPERATURE**

**Figure 19. Supply Current,  $I_{VEE1}$  versus Signal Input Level**



**Figure 20. Supply Current,  $I_{VEE2}$  versus Ambient Temperature**



TYPICAL PERFORMANCE OVER TEMPERATURE

Figure 21. Total Supply Current versus Ambient Temperature

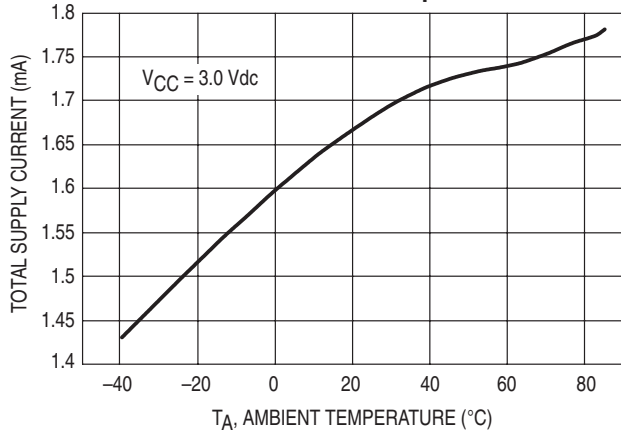


Figure 22. Minimum Supply Voltage versus Ambient Temperature

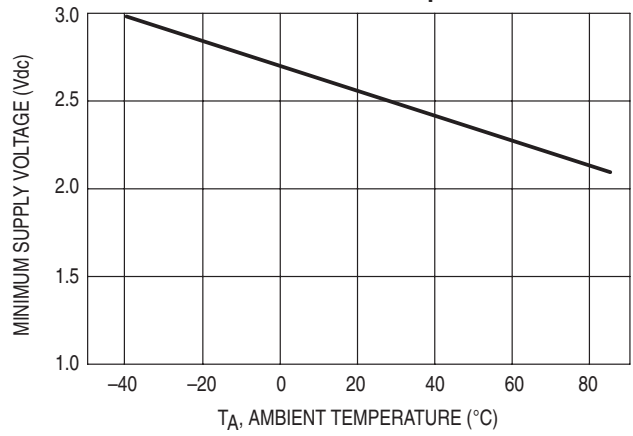


Figure 23. RSSI Current versus Ambient Temperature and Signal Level

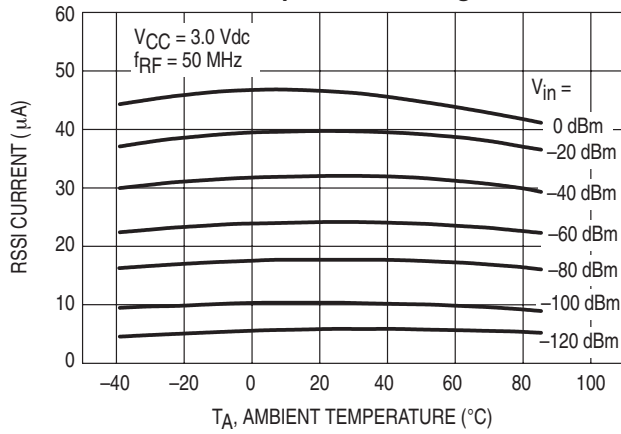


Figure 24. Recovered Audio versus Ambient Temperature

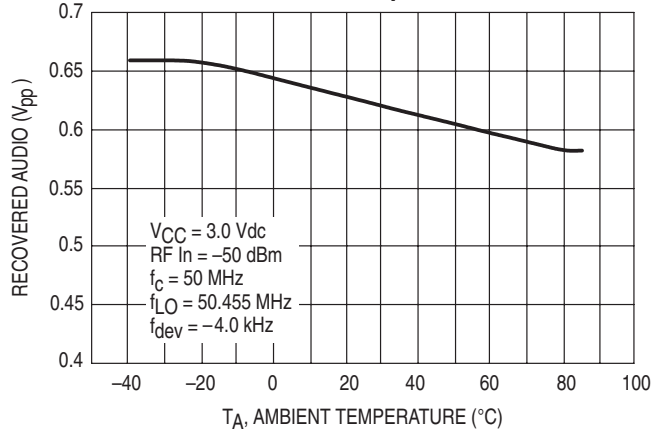


Figure 25. Demod DC Output Voltage versus Ambient Temperature

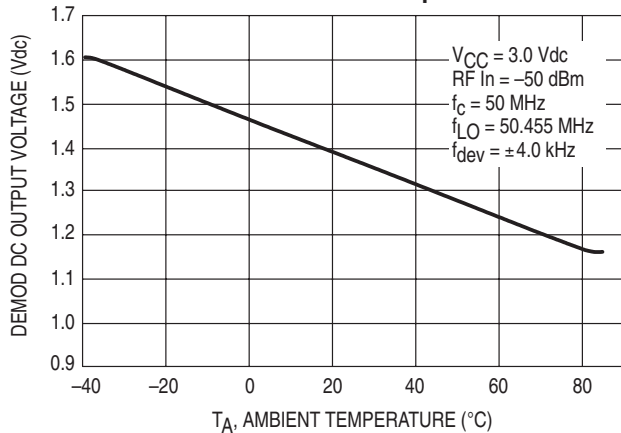
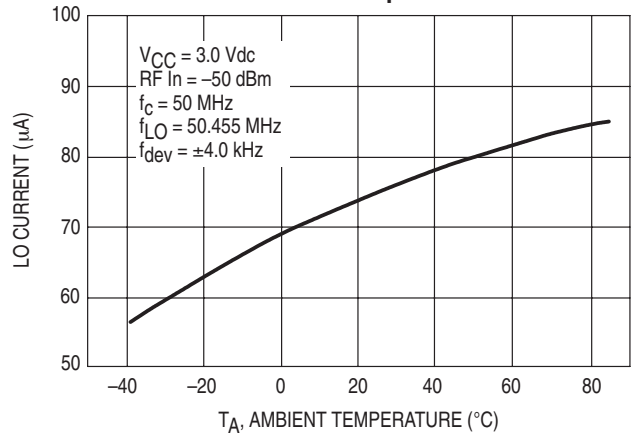
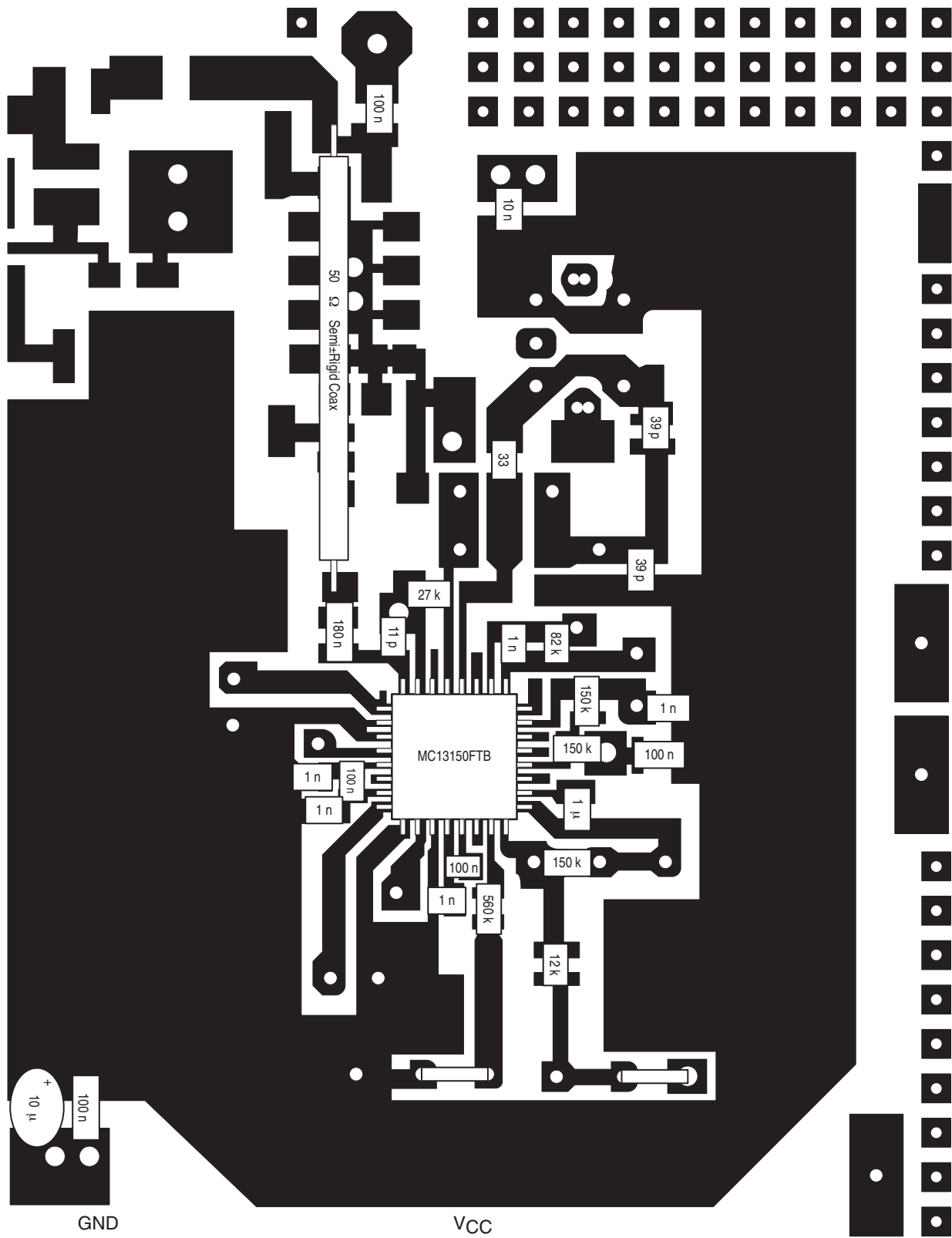


Figure 26. LO Current versus Ambient Temperature



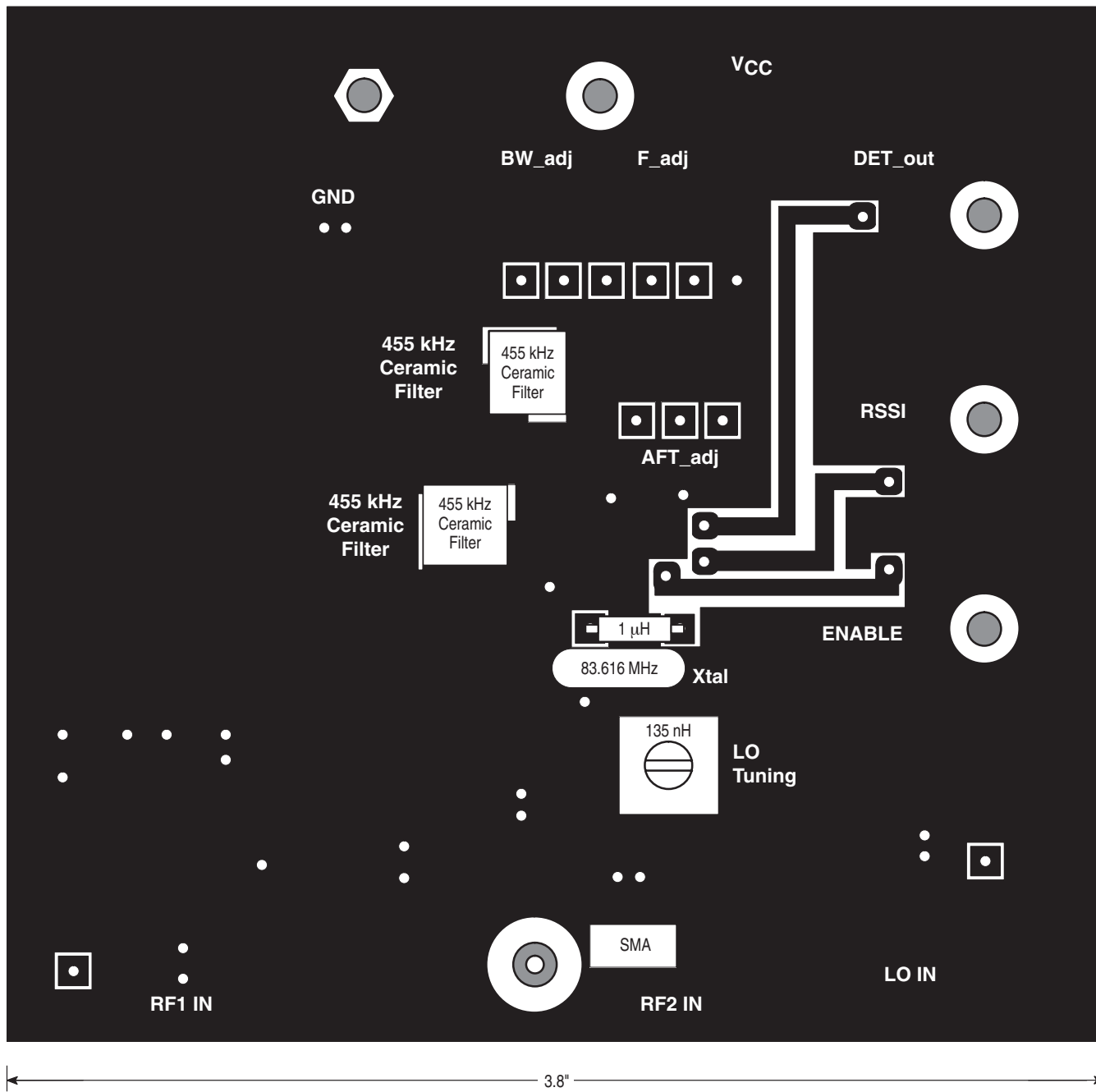
Legacy Applications Information

Figure 27. Component Placement View – Circuit Side



Legacy Applications Information

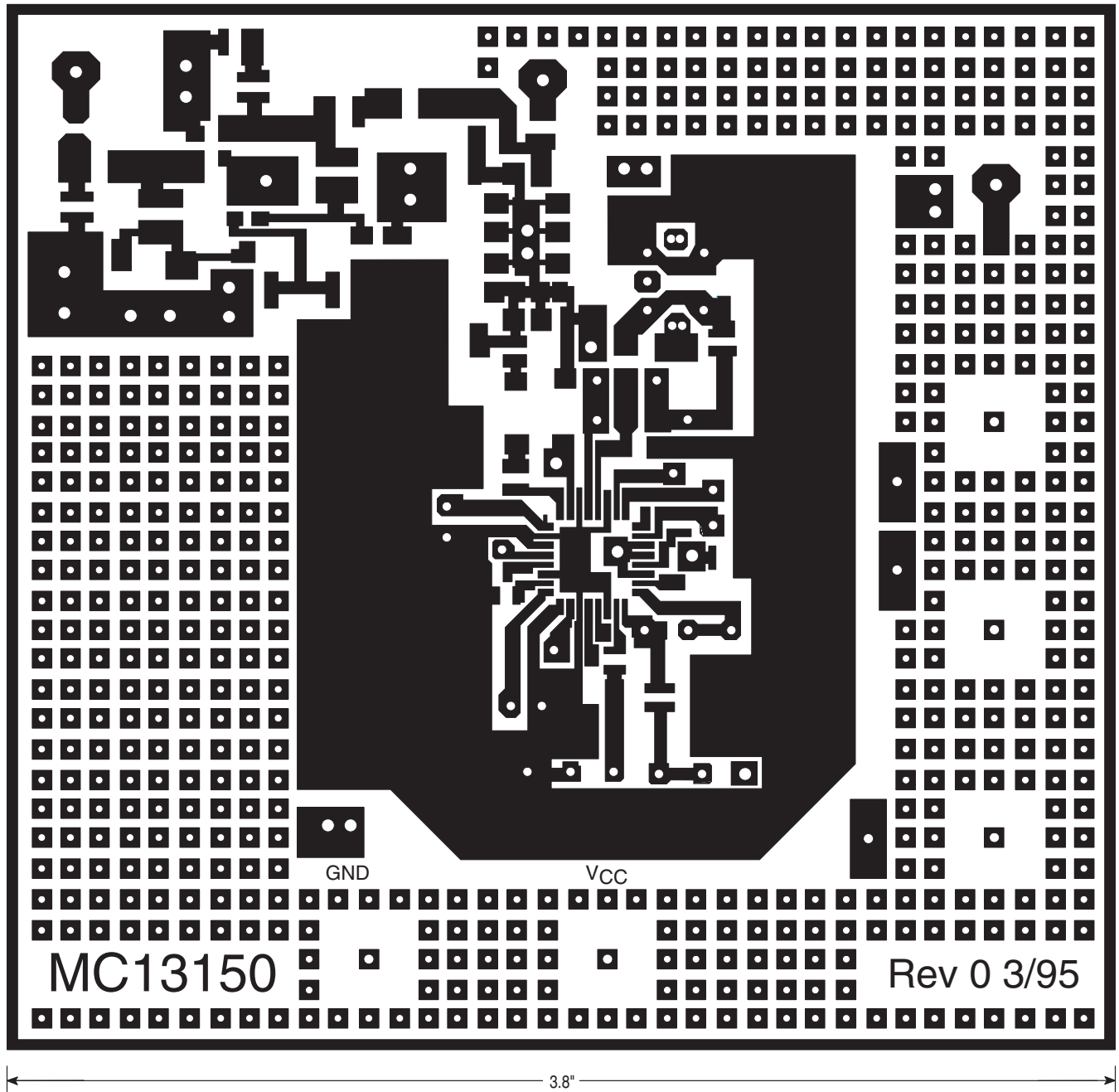
Figure 28. Component Placement View – Ground Side





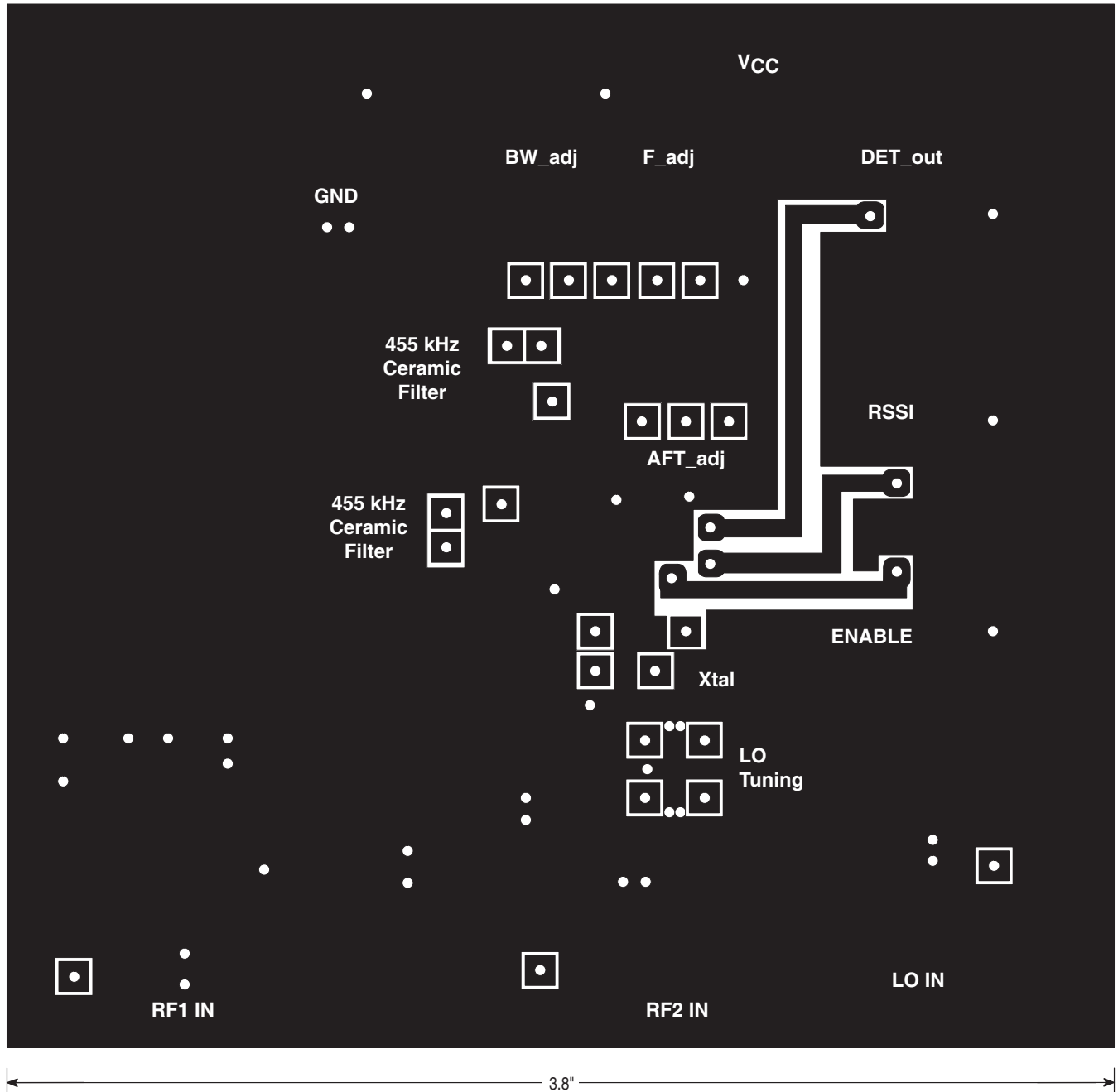
Legacy Applications Information

Figure 29. PCB Circuit Side View



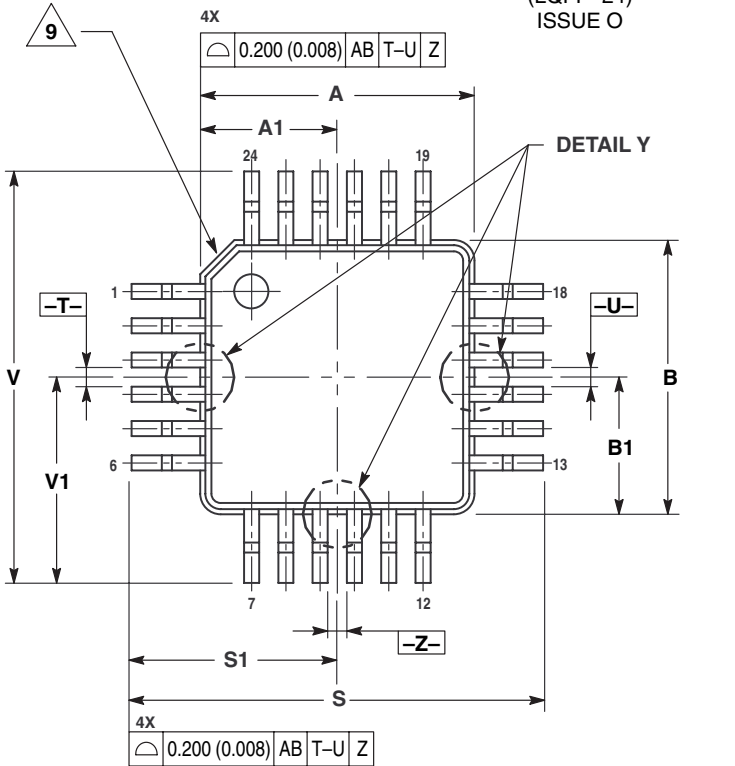
Legacy Applications Information

Figure 30. PCB Ground Side View



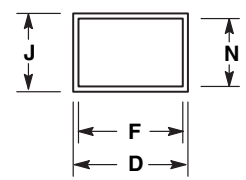
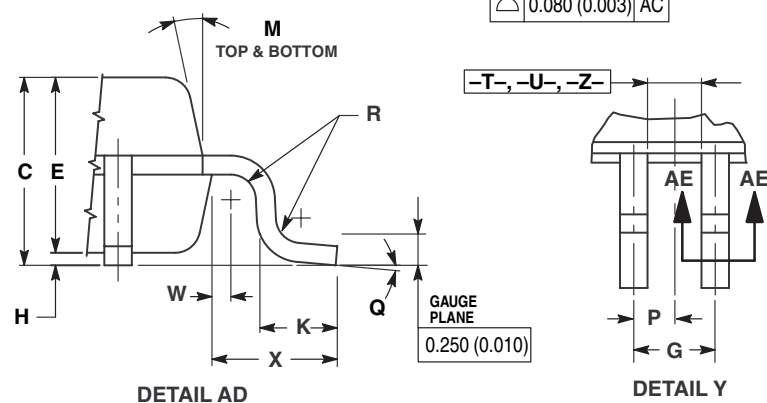
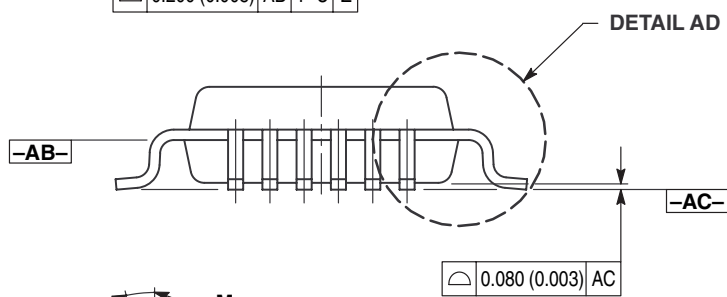
OUTLINE DIMENSIONS

ML13150-A9P  
 PLASTIC PACKAGE  
 CASE 977-01  
 (LQFP-24)  
 ISSUE O



- NOTES:
- 1 DIMENSIONING AND TOLERANCING PER ANSI Y14.5M, 1982.
  - 2 CONTROLLING DIMENSION: MILLIMETER.
  - 3 DATUM PLANE -AB- IS LOCATED AT BOTTOM OF LEAD AND IS COINCIDENT WITH THE LEAD WHERE THE LEAD EXITS THE PLASTIC BODY AT THE BOTTOM OF THE PARTING LINE.
  - 4 DATUMS -T-, -U-, AND -Z- TO BE DETERMINED AT DATUM PLANE -AB-.
  - 5 DIMENSIONS S AND V TO BE DETERMINED AT DATUM PLANE -AC-.
  - 6 DIMENSIONS A AND B DO NOT INCLUDE MOLD PROTRUSION. ALLOWABLE PROTRUSION IS 0.250 (0.010) PER SIDE. DIMENSIONS A AND B DO INCLUDE MOLD MISMATCH AND ARE DETERMINED AT DATUM PLANE AB.
  - 7 DIMENSION D DOES NOT INCLUDE DAMBAR PROTRUSION. DAMBAR PROTRUSION SHALL NOT CAUSE THE D DIMENSION TO EXCEED 0.350 (0.014).
  - 8 MINIMUM SOLDER PLATE THICKNESS SHALL BE 0.0076 (0.0003).
- △ EXACT SHAPE OF EACH CORNER IS OPTIONAL.

DIM	MILLIMETERS		INCHES	
	MIN	MAX	MIN	MAX
A	4.000 BSC		0.157 BSC	
A1	2.000 BSC		0.079 BSC	
B	4.000 BSC		0.157 BSC	
B1	2.000 BSC		0.079 BSC	
C	1.400	1.600	0.055	0.063
D	0.170	0.270	0.007	0.011
E	1.350	1.450	0.053	0.057
F	0.170	0.230	0.007	0.009
G	0.500 BSC		0.020 BSC	
H	0.050	0.150	0.002	0.006
J	0.090	0.200	0.004	0.008
K	0.500	0.700	0.020	0.028
M	12 REF		12 REF	
N	0.090	0.160	0.004	0.006
P	0.250 BSC		0.010 BSC	
Q	1°	5°	1°	5°
R	0.150	0.250	0.006	0.010
S	6.000 BSC		0.236 BSC	
S1	3.000 BSC		0.118 BSC	
V	6.000 BSC		0.236 BSC	
V1	3.000 BSC		0.118 BSC	
W	0.200 REF		0.008 REF	
X	1.000 REF		0.039 REF	

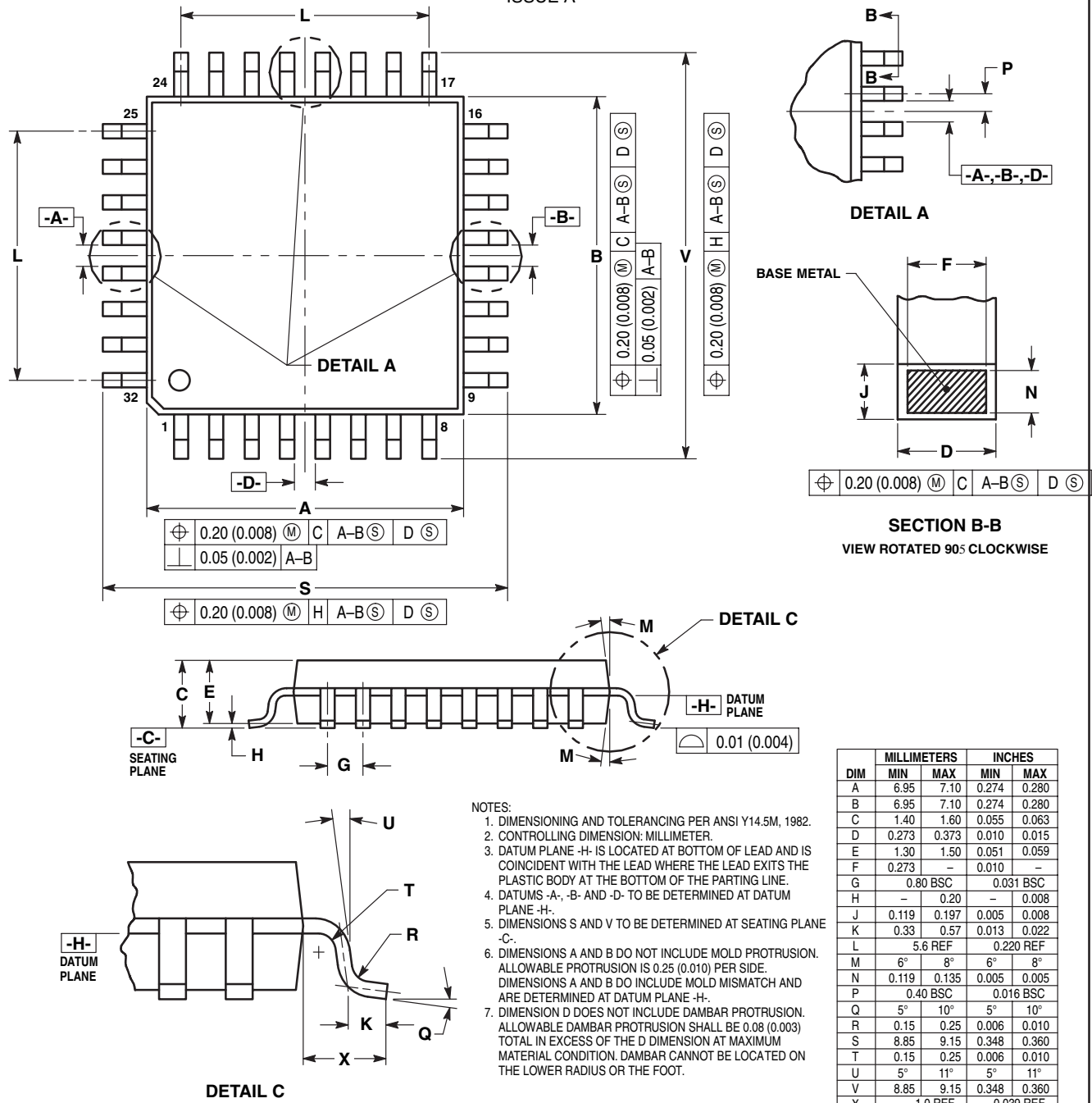


⊕ 0.080 (0.003) ⊙ AC T-U ⊙ Z ⊙

SECTION AEA-E

OUTLINE DIMENSIONS

ML13150-B9P  
 PLASTIC PACKAGE  
 CASE 873-01  
 (LQFP-32)  
 ISSUE A



- NOTES:
1. DIMENSIONING AND TOLERANCING PER ANSI Y14.5M, 1982.
  2. CONTROLLING DIMENSION: MILLIMETER.
  3. DATUM PLANE -H- IS LOCATED AT BOTTOM OF LEAD AND IS COINCIDENT WITH THE LEAD WHERE THE LEAD EXITS THE PLASTIC BODY AT THE BOTTOM OF THE PARTING LINE.
  4. DATUMS -A-, -B- AND -D- TO BE DETERMINED AT DATUM PLANE -H-.
  5. DIMENSIONS S AND V TO BE DETERMINED AT SEATING PLANE -C-.
  6. DIMENSIONS A AND B DO NOT INCLUDE MOLD PROTRUSION. ALLOWABLE PROTRUSION IS 0.25 (0.010) PER SIDE. DIMENSIONS A AND B DO INCLUDE MOLD MISMATCH AND ARE DETERMINED AT DATUM PLANE -H-.
  7. DIMENSION D DOES NOT INCLUDE DAMBAR PROTRUSION. ALLOWABLE DAMBAR PROTRUSION SHALL BE 0.08 (0.003) TOTAL IN EXCESS OF THE D DIMENSION AT MAXIMUM MATERIAL CONDITION. DAMBAR CANNOT BE LOCATED ON THE LOWER RADIUS OR THE FOOT.

Lansdale Semiconductor reserves the right to make changes without further notice to any products herein to improve reliability, function or design. Lansdale does not assume any liability arising out of the application or use of any product or circuit described herein; neither does it convey any license under its patent rights nor the rights of others. "Typical" parameters which may be provided in Lansdale data sheets and/or specifications can vary in different applications, and actual performance may vary over time. All operating parameters, including "Typicals" must be validated for each customer application by the customer's technical experts. Lansdale Semiconductor is a registered trademark of Lansdale Semiconductor, Inc.