



# BROADBAND DLVA MODEL STDLVA-90001

## TECHNICAL FEATURE

### Features

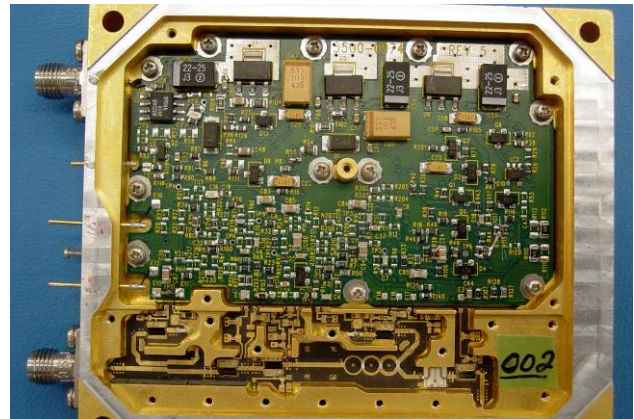
- Highest CW Immunity Available - -20 dBm max
- Wideband performance
- Large dynamic range

### Performance

Operating Frequency ..... 2 - 18 GHz  
 Tangential Signal Sensitivity (TSS) ..... -67 dBm max  
 Frequency Flatness ..... +/- 2 dB max  
 Operating Dynamic Range ..... -67 to +5 dBm  
 Linearity ..... +/- 1.5 dB max  
 (Best fit straight line at each temperature and frequency)  
 Slope..... 75 mV/dB nominal (adjustable)  
 Rise Time ..... 35 ns typical  
 Fall Time ..... 400 ns typical

Power Supply ..... +15 VDC @ 200 mA typ,  
 -15 VDC @ 15 mA typ (no RF output)

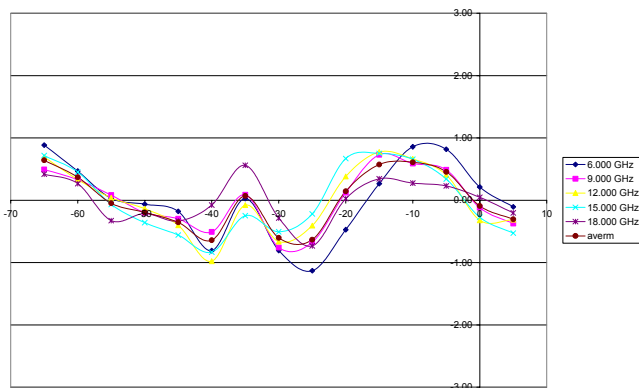
RF Connector ..... SMA Female  
 DC Connector ..... Pins  
 Operating Temperature Range ..... 0 to +70 C  
 Package Size ..... 4.60"x2.90"x1.125"



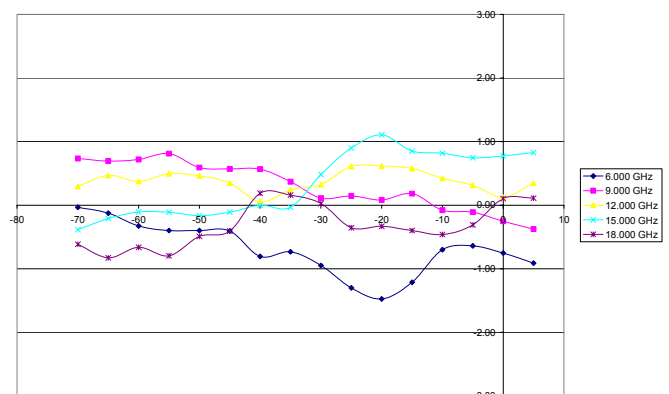
### Description

The STDLVA-90001 broadband DLVA represents the latest design techniques and high performance configuration. The design is a dual detector amplified design with a unique video amplification and summing technique. The amplifier is fully temperature compensated for superior performance. The device is housed in a fully hermetically sealed enclosure for high reliability.

Best fit error room temp



flatness room unit



STC Microwave Systems – Olektron [www.craneae.com](http://www.craneae.com)

28 Tozer Road • Beverly, MA 01915  
 phone: 978-524-7200 • email: [electronics@craneae.com](mailto:electronics@craneae.com)

Revision 90001-SDTLVA 20050531

STC MICROWAVE SYSTEMS - OLEKTRON  
 A CRANE CO. COMPANY

