

Monolithic crystal filter

MQF70.0-1500/02



Application

- 4 pol filter
- i.f.- filter
- use in mobile and stationary transceivers

Limiting values

		Unit	Value
Center frequency	f_0	MHz	70.0
Insertion loss		dB	≤ 6.0
Pass band at 3.0 dB		kHz	± 7.50
Ripple in pass band	$f_0 \pm 6.00$ kHz	dB	≤ 1.0
Stop band attenuation	$f_0 \pm 30$ kHz	dB	≥ 40
	$f_0 \pm 100$ kHz	dB	> 70
Alternate attenuation		dB	> 70
Spurious responses		dB	> 40
IMD at -20 dBm	$f_0 \pm 50; f_0 \pm 100$ kHz	dB	> 90

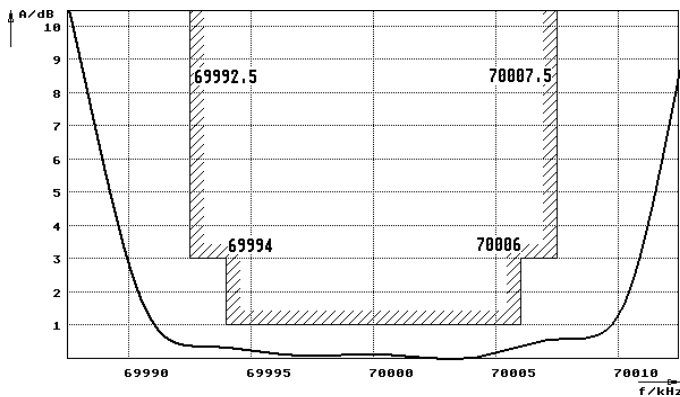
Terminating impedance Z

R1 C1	Ohm/pF	50 0
R2 C2	Ohm/pF	50 0

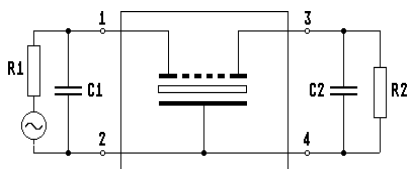
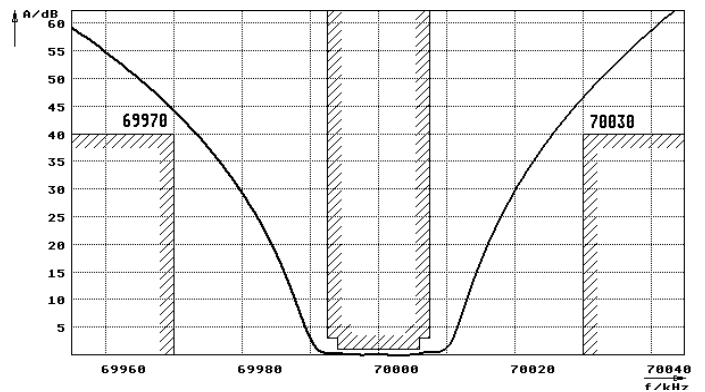
Operating temp. range	°C	-20... +70
-----------------------	----	------------

Characteristics MQF70.0-1500/02

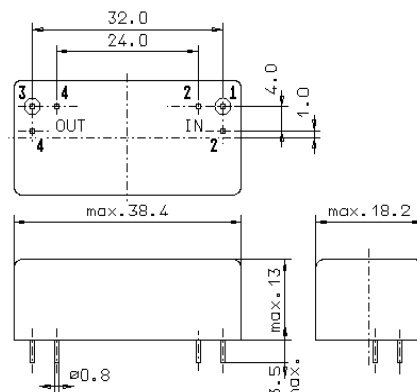
Pass band



Stop band



Pin connections: 1 Input
2 Input-E
3 Output
4 Output-E



GM17