

# Monolithic crystal filter

## MQF70.0-0610/03



### Application

- 6 pol filter
- i.f.- filter
- use in mobile and stationary transceivers

### Limiting values

Limiting values	Unit	Value
Center frequency	fo	MHz 70.0
Insertion loss		dB ≤ 5.0
Pass band at 2.0 dB		kHz ± 3.05
Ripple in pass band	fo ± 3.05 kHz	dB ≤ 2.0
Stop band attenuation	fo ± 16 kHz	dB ≥ 65
Alternate attenuation	fo ± 1 MHz	dB > 65
Spurious responses	fo ± 1 Mhz	dB > 45
Group delay distortion	fo ± 3.05kHz at 25°C	µs < 80
IP3 pass band		dBm > 16
IP3 stop band		dBm > 32

### Terminating impedance Z

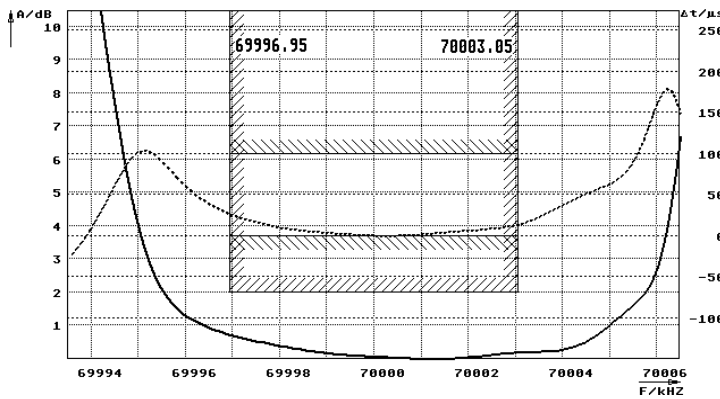
R1    C1	Ohm/pF	50    0
R2    C2	Ohm/pF	50    0

### Operating temp. range

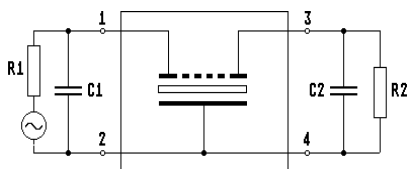
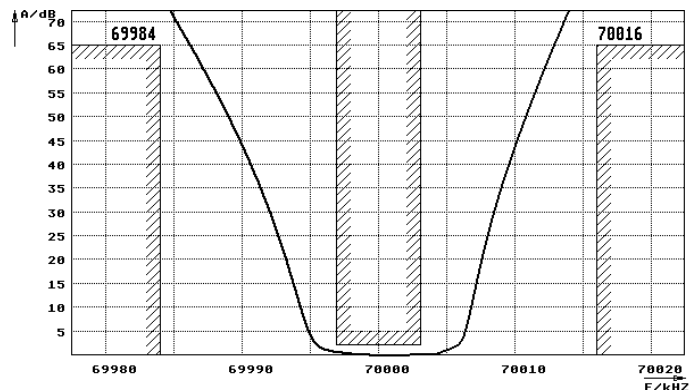
° C -40... +75

### Characteristics MQF70.0-0610/03

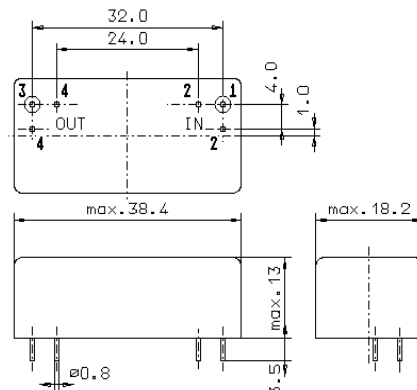
#### Pass band



#### Stop band



Pin connections: 1 Input  
2 Input-E  
3 Output  
4 Output-E



GM17