

Monolithic crystal filter

MQF21.4-3000/32



Application

- 8 pol filter
- i.f.- filter
- use in mobile and stationary transceivers

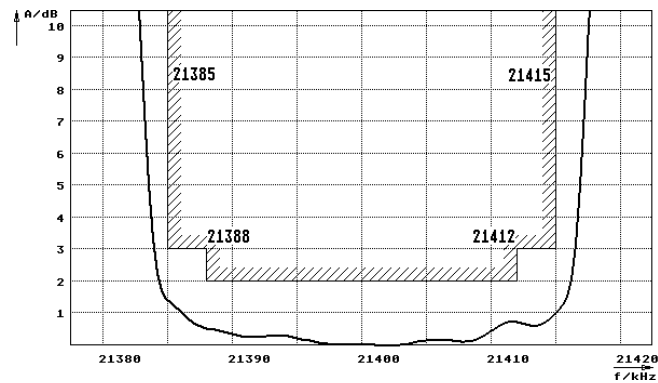
Limiting values		Unit	Value
Center frequency	f_0	MHz	21.4
Insertion loss		dB	≤ 4.0
Pass band at 3.0 dB		kHz	± 15.00
Ripple in pass band	$f_0 \pm 12.00$ kHz	dB	≤ 2.0
Stop band attenuation	$f_0 \pm 35$ kHz	dB	≥ 70
	$f_0 \pm 50$ kHz	dB	> 90
Alternate attenuation	$f_0 \pm 50$	dB	> 90 except spurious

Terminating impedance Z			
R1 C1		Ohm/pF	5600 -1
R2 C2		Ohm/pF	5600 -1

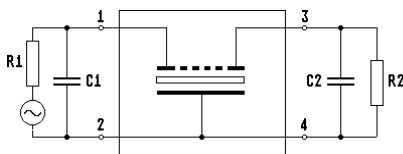
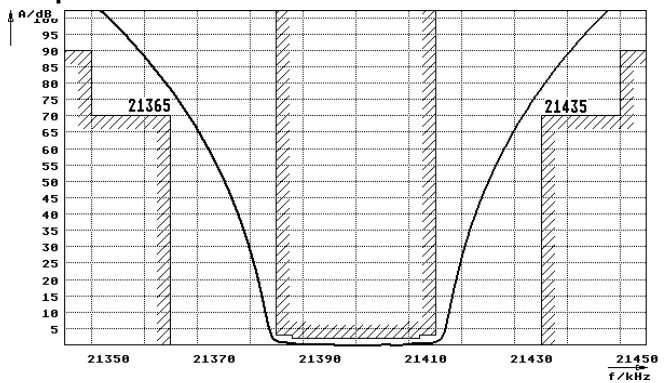
Operating temp. range ° C -40... +80

Characteristics MQF21.4-3000/32

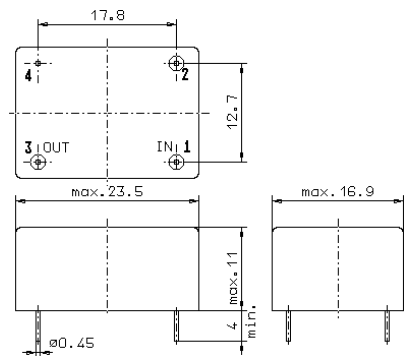
Pass band



Stop band



- Pin connections:
- 1 Input
 - 2 Ground-Input
 - 3 Output
 - 4 Ground-Output



GM20.1