

Monolithic crystal filter

MQF21.4-1200/14



Application

- 8 pol filter
- i.f.- filter
- use in mobile and stationary transceivers

Limiting values

| | | Unit | Value |
|-----------------------|----------------------------|------|------------|
| Center frequency | f_0 | MHz | 21.4 |
| Insertion loss | | dB | ≤ 3.5 |
| Pass band at 3.0 dB | | kHz | ± 6.00 |
| Ripple in pass band | $f_0 \pm 4.00$ kHz | dB | ≤ 2.0 |
| Stop band attenuation | $f_0 \pm 14$ kHz | dB | ≥ 65 |
| | $f_0 \pm 20$ kHz | dB | > 90 |
| Alternate attenuation | $f_0 \pm 20 \dots 500$ kHz | dB | > 90 |

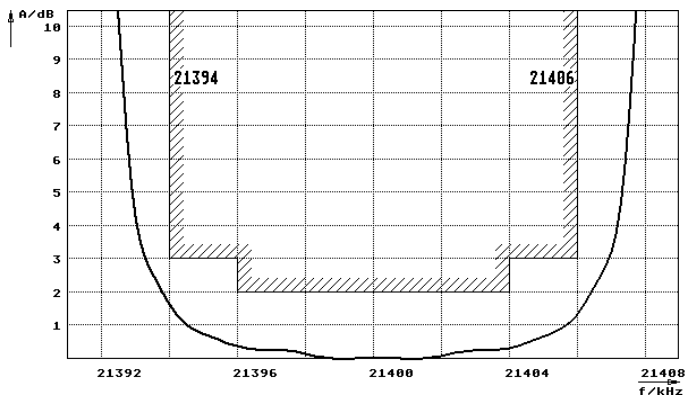
Terminating impedance Z

| | | |
|----------|--------|-----------|
| R1 C1 | Ohm/pF | 470 15 |
| R2 C2 | Ohm/pF | 470 15 |

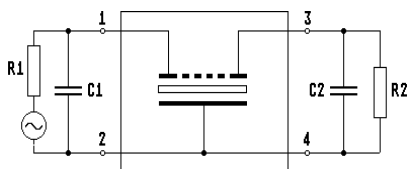
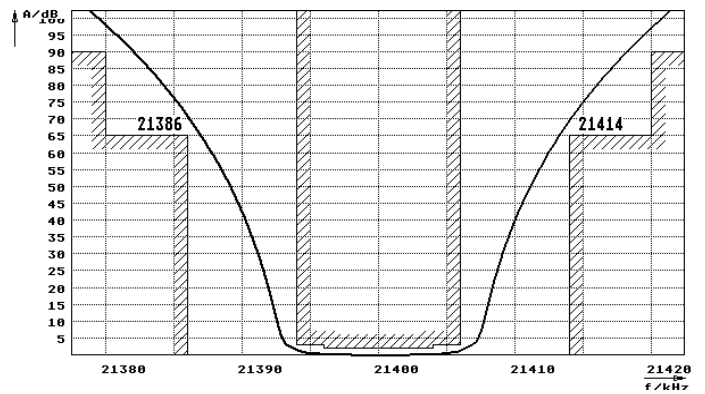
| | | |
|-----------------------|--------------------|------------|
| Operating temp. range | $^{\circ}\text{C}$ | -25... +70 |
|-----------------------|--------------------|------------|

Characteristics MQF21.4-1200/14

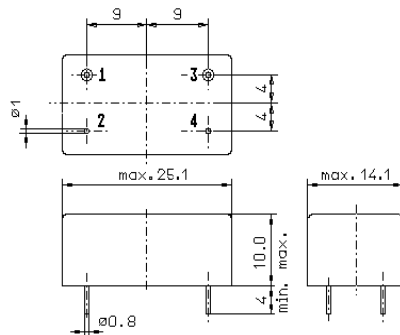
Pass band



Stop band



Pin connections: 1 Input
2 Input-E
3 Output
4 Output-E



GM3