

**E-Series Surface Mount Mixer  
5 – 2500 MHz**

**MAMX-007238-CM25MH  
V2 P**

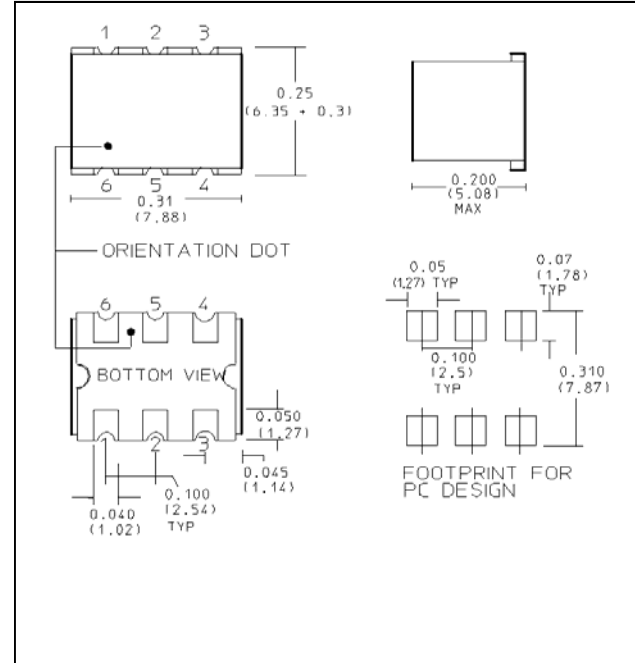
**Features**

- LO Power +13 dBm
- Up to +9 dBm RF
- Surface Mount
- Tape and reel packaging available
- 260°C Reflow Compatible
- RoHS\* compliant version of the EMRS-25MH

**Description**

M/A-COM's MAMX-007238-CM25MH is a RoHS Compliant Low Cost, Broadband, high performance Double Balanced Mixer designed for use in high volume wireless applications. The device has been optimized by careful selection of the Schottky Diode and Balun Transformer for excellent performance. The MAMX-007238-CM25MH is available in an SM-1 surface mount package and is designed to be utilized in both standard reflow and high temperature soldering reflow profiles. Parts are packaged in tape & reel.

**SM - 87 Package**



**Ordering Information**

Part Number	Package
MAMX-007238-CM25MH	Tape and Reel (900 piece Reel)

**Absolute Maximum Ratings** <sup>1,2</sup>

Parameter	Absolute Maximum
RF Power	150 mW
Peak IF Current	40 mA
Operating Temperature	-55°C to +85°C
Storage Temperature	-65°C to +125°C

1. Exceeding any one or combination of these limits may cause permanent damage to this device.
2. M/A-COM does not recommend sustained operation near these survivability limits.

**Pin Configuration**

Pin No.	Function
1	LO
2	Ground
3	Ground
4	RF
5	IF
6	Ground

**This PRELIMINARY Data Sheet contains information regarding a product M/A-COM has under development. Performance is based on measured results and target specifications. Commitment to produce in volume is not guaranteed.**

\* Restrictions on Hazardous Substances, European Union Directive 2002/95/EC.

E-Series Surface Mount Mixer  
5 – 2500 MHz

MAMX-007238-CM25MH  
V2 P

**Electrical Specifications:  $T_A = 25^\circ\text{C}$ ,  $Z_0 = 50\Omega$ , LO = +7 dBm**

Parameter	Test Conditions	Frequency	Units	Min	Typ	Max
RF Frequency	—	5 - 2500	MHz	—	—	—
LO Frequency	—	5 - 2500	MHz	—	—	—
IF Frequency	—	5 - 1500	MHz	—	—	—
Conversion Loss	—	10 - 1250 5 - 2500	dB dB	— —	6.3 7.3	8.5 9.8
Isolation	LO to RF	5 - 50 50 - 1250 1250 - 2500	dB dB dB	45 35 30	28 23 20	— — —
Isolation	LO to IF	5 - 50 50 - 1250 1250 - 2500	dB dB dB	40 30 25	23 20 17	— — —
Input 1 dB Compression	—	5 - 2500	dBm	—	—	1