

SHARP

LM64K104

Large Size Graphic Type LCD Module
(FA/POS/Measuring instruments)

Features

- 18 cm [7.2"] VGA format
- Transflective B/W display
- Thin structure (7.0 mm) & lightweight (260 g)

Specifications

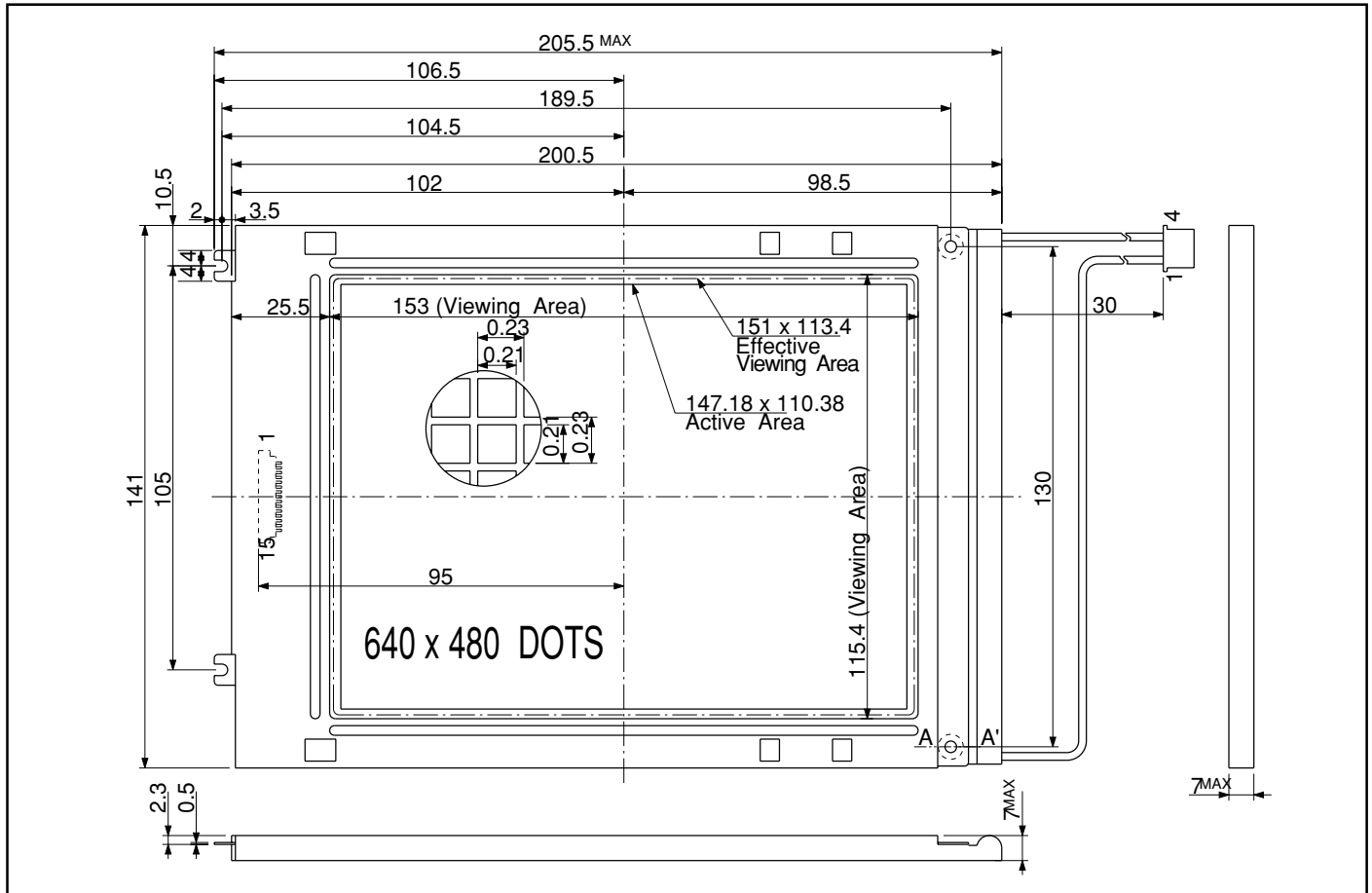
Parameter		Unit
Display size	18 [7.2]	cm ["]
Dot format (H x V)	640 x 480	dot
Dot Pitch (H x V)	0.23 x 0.23	mm
Active area (H x V)	147.2 x 110.4	mm
Panel type	DFSTN	-
Panel mode	Transflective	-
Color	B/W	-
Contrast ratio	13 : 1/15 : 1*1	-
Response Time	500	ms

Parameter		Unit
Brightness	50	cd/m ²
Duty Ratio	1/240	-
Backlight type	1CCFT(E)	-
Power consumption	2 050	mW
Outline dimensions (W x H x D)	200.5(205.5) x 141.0 x 7.0	mm
Weight	260	g
Operating temperature	0 to +50	°C
Storage temperature	-25 to +70	°C

*1...Contrast ratio : Reflective / Transmissive

Outline Dimensions

unit : mm



In the absence of confirmation by device specification sheets, SHARP takes no responsibility for any defects that may occur in using any SHARP devices shown in catalogs, data books, etc. Contact SHARP in order to obtain the latest device specification sheets before using any SHARP device. Specifications are subject to change without notice for improvement.