

DATA SHEET

FT 18

Frame Transfer CCD Image Sensor

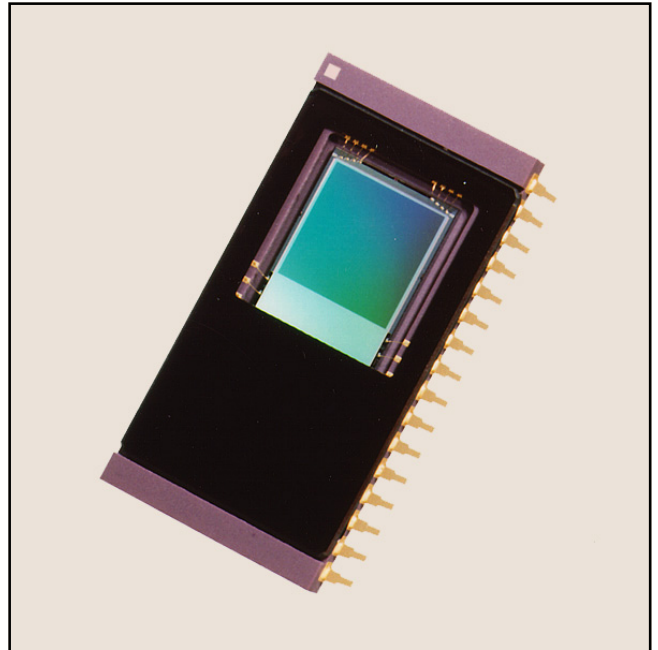
Product specification
File under Image Sensors

2000 January 7

Frame Transfer CCD Image Sensor

FT 18

- 2/3-inch optical format
- 1M active pixels (1024H x 1024V)
- Progressive scan
- Excellent anti-blooming
- Variable electronic shuttering
- Square pixel structure
- Hor. and Vert. binning
- 100% optical fill factor
- High dynamic range (>60dB)
- High sensitivity
- Low dark current and fixed pattern noise
- Low read-out noise
- Data rate up to 40 MHz
- Frame rate up to 30 Hz
- Mirrored read-out option



Description

The FT 18 is a monochrome progressive-scan frame-transfer image sensor offering 1K x 1K pixels at 30 frames per second through a single output buffer. The combination of high speed and a high linear dynamic range (>10 true bits at room temperature without cooling) makes this device the perfect solution for high-end real time medical X-ray, scientific and industrial applications. A second output can be used for mirrored images. The device structure is shown in figure 1.

Device structure

Optical size:	7.68 mm (H) x 7.68 mm (V)	
Chip size:	8.9 mm (H) x 17.0 mm (V)	
Pixel size:	7.5 μm x 7.5 μm	
Active pixels:	1024 (H) x 1024 (V)	
Total no. of pixels:	1072 (H) x 1048 (V)	
Optical black pixels:	Left: 20	Right: 20
Timing pixels:	Left: 4	Right: 4
Dummy register cells:	Left: 7	Right: 7
Contour lines:	Bottom: 1	Top: 4
Optical black lines:	Bottom: 11	Top: 8

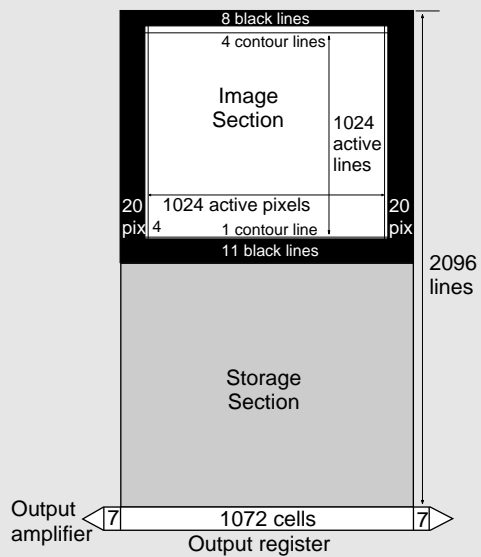


Figure 1 - Device structure

Frame Transfer CCD Image Sensor

FT 18

Architecture of the FT 18

The FT18 consists of a shielded storage section and an open image section. Both sections have the same structure with identical cells and properties. The only difference between the two sections is the optical light shield.

The optical centres of all pixels in the image section form a square grid. The charge is generated and integrated in this section. The image section is controlled by four image clocks (A1 to A4). After integration, the image charge is completely shifted to the storage section. The integration time is electronically controlled by charge reset (CR).

The storage section is controlled by four storage clocks (B1 to B4). An output register is located below the storage section for read-out. The output register has buffers at both ends. This allows either normal or mirrored read-out.

Transport of the pixels in the output register is controlled by three register clock phases (C1 to C3). The register can be used for vertical binning. Horizontal binning can be achieved by summing pixel charges under the floating diffusion. More information can be found in the application note. Figure 2 shows the detailed internal structure.

IMAGE SECTION	
Image diagonal	10.9 mm
Aspect ratio	1:1
Active image width x height	7.680 x 7.680 mm ²
Total width x height	8.040 x 7.860 mm ²
Pixel width x height	7.5 x 7.5 μm ²
Geometric fill factor	100%
Image clock pins	A1, A2, A3, A4
Capacity of each clock phase	<3.75nF per pin
Number of active lines	1024
Number of contour lines	4 (top) + 1 (bottom)
Number of black lines	8 (top) + 11 (bottom)
Total number of lines	1048
Number of active pixels per line	1024
Number of overscan (timing) pixels per line	8 (2x4)
Number of black reference pixels per line	40 (2x20)
Total number of pixels per line	1072

STORAGE SECTION	
Storage width x height	8.040 x 7.860 mm ²
Cell width x height	7.5 x 7.5 μm ²
Storage clock phases	B1, B2, B3, B4
Capacity of each B phase	<4.1nF per pin
Number of cells per line x number of lines	1072 x 1048

OUTPUT REGISTER	
Output buffers (three-stage source follower)	2
Number of registers	1 (bidirectional below storage)
Number of register cells below storage	1072
Number of extra cells to output	2 x 7
Output register horizontal transport clock pins	3 (C1..C3)
Capacity of each C-clock phase	<85pF per pin
Overlap capacity between neighbouring C-clocks	<35pF
Reset Gate clock phases	2 pins (RGL, RGR)
Capacity of each RG	<15pF

Frame Transfer CCD Image Sensor

FT 18

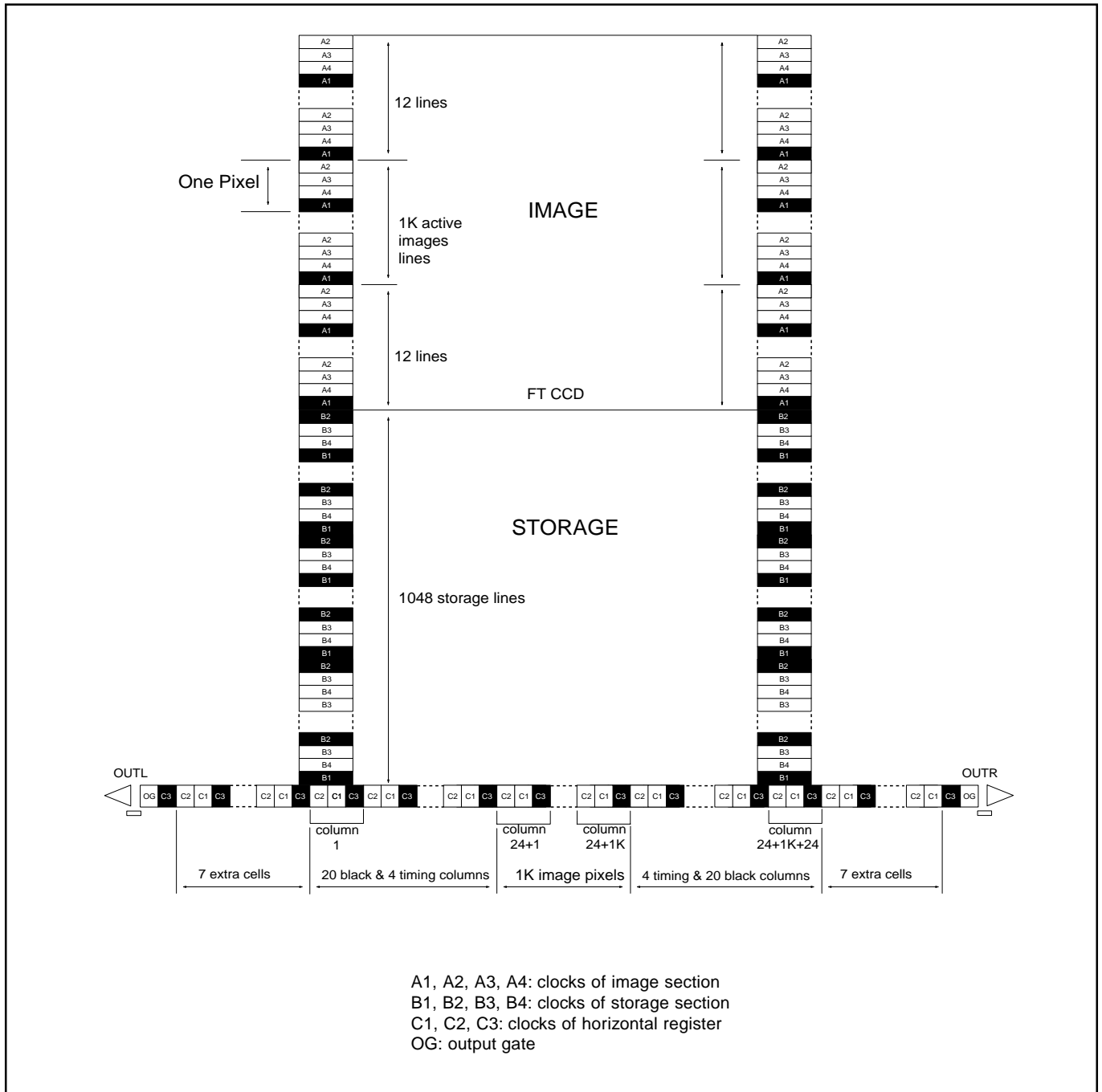


Figure 2 - Detailed internal structure

Frame Transfer CCD Image Sensor

FT 18

Specifications

Absolute Maximum Ratings	Min.	Max.	Unit
GENERAL: storage temperature	-55	+80	°C
ambient temperature during operation	-40	+60	°C
voltage between any two gates	-20	+20	V
DC current through any clock (absolute value)	-0.2	+0.2	µA
OUT current (no short circuit protections)	0	6	mA
VOLTAGES IN RELATION TO VNS:			
VPS, SFS	-30	+0.5	V
SFD	-8	+8	V
RD	-15	+0.5	V
All other pins	-32	+0.5	V
VOLTAGES IN RELATION TO VPS:			
VNS	-0.5	+30	V
SFD, RD	+0	+30	V
SFS	-8	+8	V
All other pins	-20	+20	V

DC Conditions ¹		Min.	Typical	Max.	Unit
VNS ²	N substrate	16	adjusted	24	V
VPS	P substrate	2	4	6	V
SFD	Source Follower Drain	18	20	22	V
SFS	Source Follower Source	-	0	-	V
VCS	Current Source	-2	0	3	V
OG	Output Gate	3	5.4	8	V
RD	Reset Drain	12	13	15	V

AC Clock Level Conditions ¹		Min.	Typical	Max.	Unit
IMAGE CLOCKS:					
A-clock swing		9.5	10	-	V
A-clock low level		-	0	-	V
Charge Reset (CR) level on A-clocks ³		-	-5	-	V
Charge Pump (CP) level on A-clocks		-	0	-	V
STORAGE CLOCKS (duty cycle=5/8):					
B-clock swing		9.5	10	-	V
B-clock low level		-	0	-	V
OUTPUT REGISTER CLOCKS (duty cycle=1/2):					
C-clock swing		-	5	-	V
C-clock low level		-	3	-	V
OTHER CLOCKS:					
Reset Gate (RG) swing		-	10	12	V
Reset Gate (RG) low level		-	1	-	V

¹ All voltages in relation to SFS.² To set the VNS voltage for optimal Vertical Anti-Blooming (VAB), it should be adjustable between minimum and maximum values.³ Guaranteed charge reset requires the CR voltage to last at least 1.2µs.

Frame Transfer CCD Image Sensor

FT 18

Timing diagrams (for default operation)

AC Characteristics	Min.	Typical	Max.	Unit
Horizontal frequency (1/Tp)	-	36	40	MHz
Vertical frequency	-	750	833	kHz

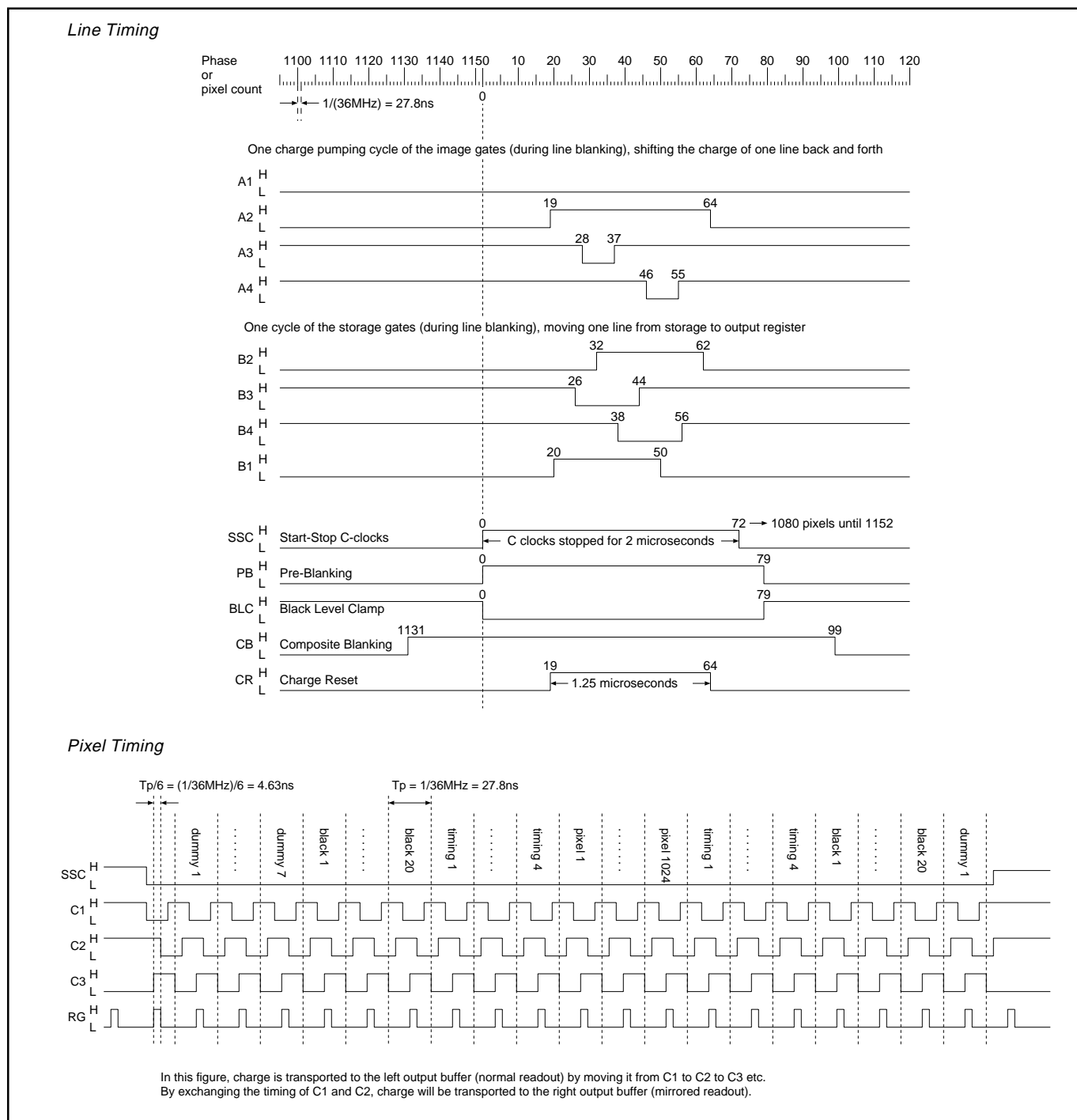
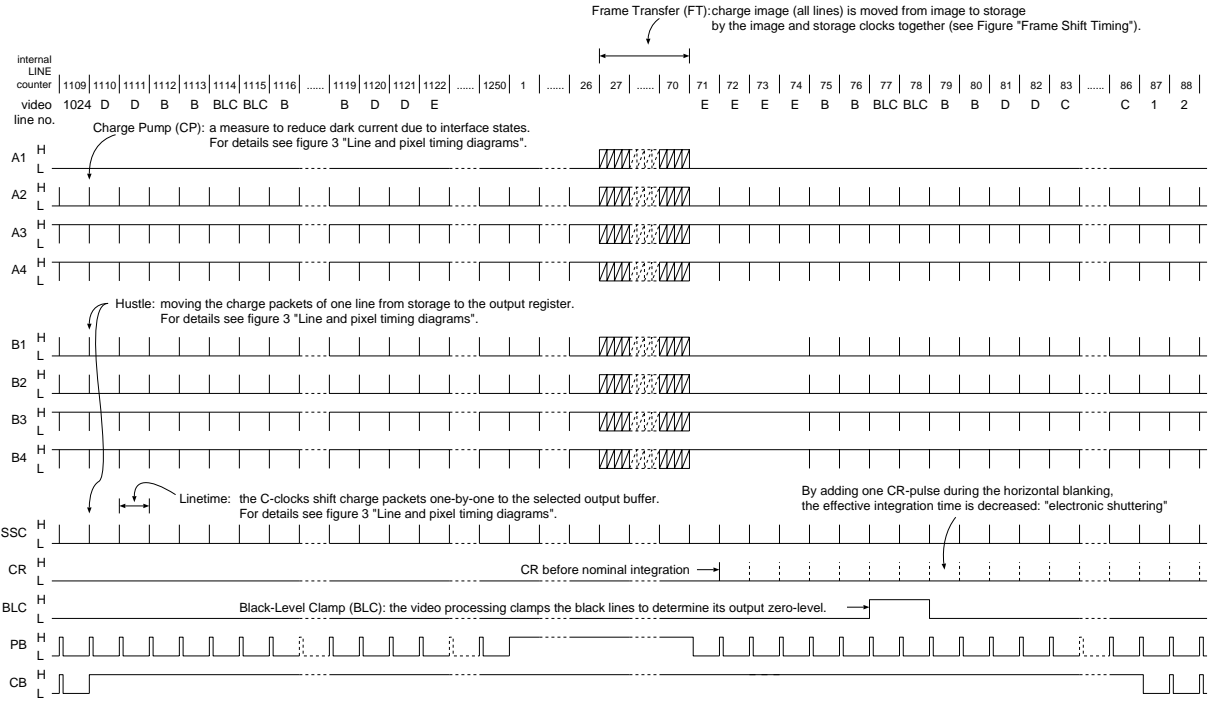


Figure 3 - Line and pixel timing diagrams

Frame Transfer CCD Image Sensor

FT 18

Frame Timing



Frame Shift Timing

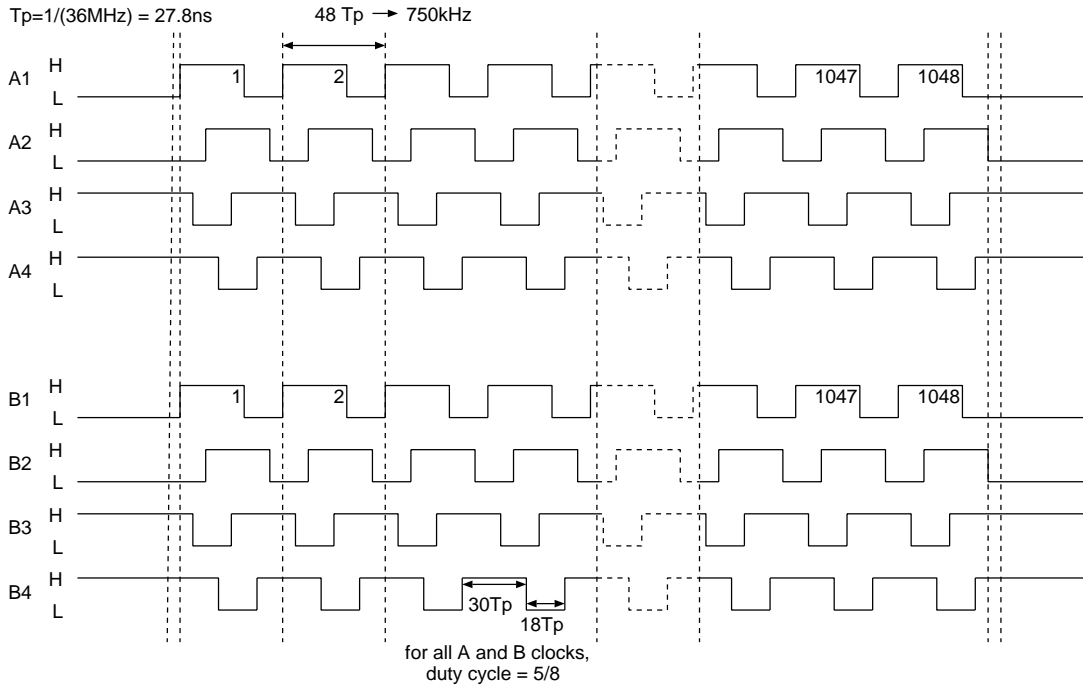


Figure 4 - Frame timing diagrams

Frame Transfer CCD Image Sensor

FT 18

Performance

The performance of the FT 18 is described for modes of operation with 25 frames/sec or 30 frames/sec respectively. Measurements for the FT 18 are done under the following circumstances (values in brackets apply for the 30 frames/sec mode):

- VNS is adjusted as low as possible while maintaining proper Vertical Anti-Blooming.
- Integration takes place under 2 gates with 10V clock swing during 40ms (33.33ms)

- The vertical transport or frame shift frequency equals 750kHz (714kHz).
- The horizontal transport or read-out frequency equals 36MHz (40MHz).
- The RMS read-out noise of the output buffers and the FPN are measured in the bandwidth 0.1-18MHz (0.1-20MHz).
- The performance in dark is given at a temperature of 318K / 45°C. Note that the dark current decreases by a factor of two for every decrease of temperature of approximately 10°C.

Linear / Saturation	Min.	Typical	Max.	Unit
Overexposure over entire area while maintaining good VAB	300	-	-	lux
Vertical resolution (MTF) @ 67 lp/mm	25	-	-	%
Quantum efficiency @ 450 nm	10	11	-	%
Quantum efficiency @ 520 nm	21	22	-	%
Quantum efficiency @ 600 nm	18	19	-	%
Quantum efficiency @ 800 nm (near IR)	5	-	-	%
Image lag	-	0	-	%
White Shading ¹	-	-	2.5	%
Random Non-Uniformity (RNU) ²	-	1.0	1.4	%
Full-well capacity Floating Diffusion (FD)	120	-	-	kel.
Full-well capacity saturation level (Q_{max}) ³ image	40	45	-	kel.
Full-well capacity saturation level (Q_{max}) storage	45	-	-	kel.
Full-well capacity saturation level (Q_{max}) output register ⁴	90	-	-	kel.
25 frames/sec mode only				
Sensitivity @ 3200K without IR cut-off filter	5.6	5.8	-	kel/lux
Smear without shutter ⁵	-	-	0.39	%
Dynamic range	60	63.8	-	dB
RMS read-out noise	-	29	38	el
30 frames/sec mode only				
Sensitivity @ 3200K without IR cut-off filter	4.6	4.8	-	kel/lux
Smear without shutter ⁵	-	-	0.40	%
Dynamic range	60	63.5	-	dB
RMS read-out noise	-	30	40	el

¹ White Shading is defined as the ratio of the one- σ value of an 8x8 pixel blurred image (low-pass) to the mean signal value.

² Random Non Uniformity is defined as the ratio of the one- σ value of the highpass image to the mean signal value at nominal light.

³ Q_{max} is determined from the lowpass filtered image.

⁴ Q_{max} of the output register may be increased up to 200kel. In this case the charge packets of the pixels may get mixed in the output register during horizontal transport. This may reduce the number of times that the output register needs to be read out if lines are read out solely to be dumped.

⁵ The smear condition is: overexposure with a spot with a height of 10% of the image height (approx. 100 lines).

Frame Transfer CCD Image Sensor

FT 18

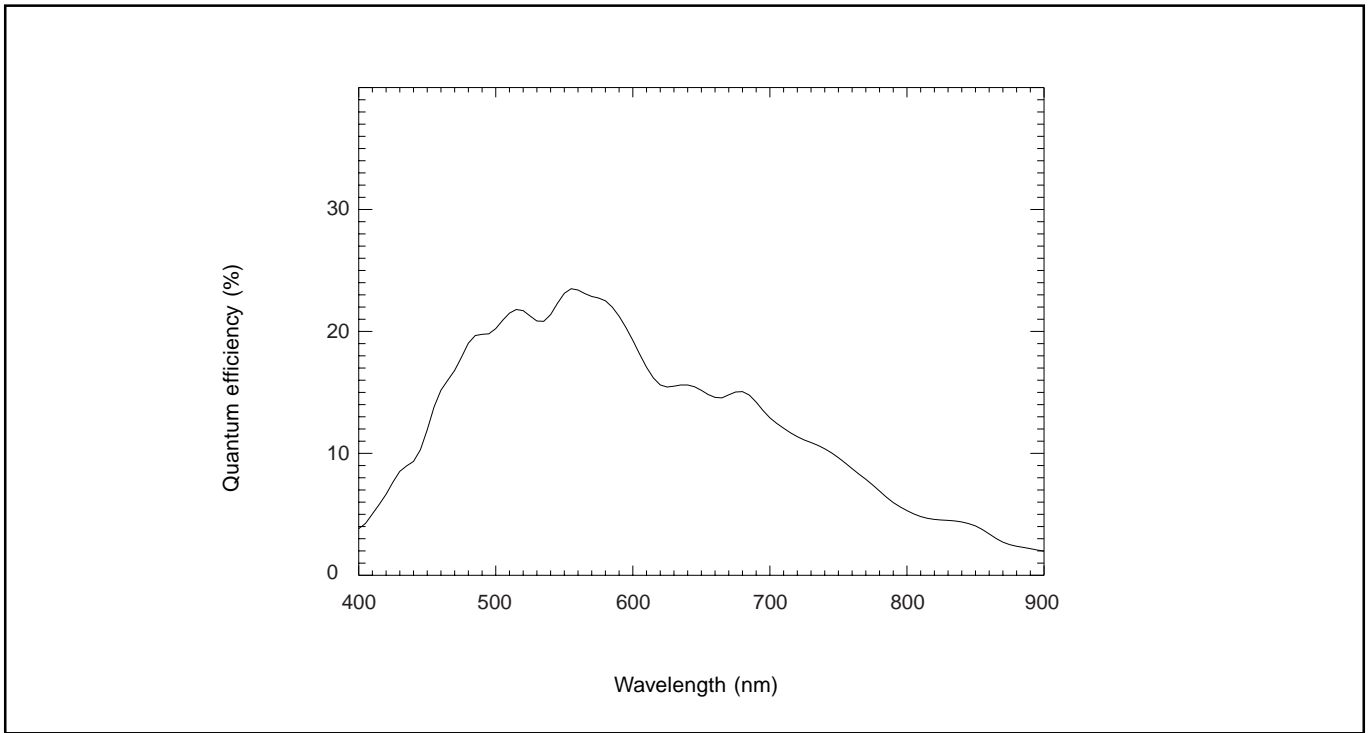


Figure 5 - Quantum efficiency versus wavelength

Frame Transfer CCD Image Sensor

FT 18

Output Buffers	Min.	Typical	Max.	Unit
Conversion factor	8.5	10	11.5	$\mu\text{V}/\text{el.}$
Supply current		4		mA
Bandwidth		110		MHz
Output impedance buffer ($R_{\text{load}} = 3.3\text{k}\Omega$, $C_{\text{load}} = 2\text{pF}$)		400		Ω

Dark Condition	Min.	Typical	Max.	Unit
Dark current	-	-	240	pA/cm^2
Black level offset ¹	-	-	25	el
Dark condition at 25 frames/sec:				
Average dark signal	-	56	67	el
Shot noise of the dark current	-	-	10	el
Horizontal shading	-	-	25	el
Vertical shading	-	-	66	el
Fixed Pattern Noise ² in dark (FPN)	-	-	19	el
Dark condition at 30 frames/sec:				
Average dark signal	-	47	56	el
Shot noise of the dark current	-	-	10	el
Horizontal shading	-	-	25	el
Vertical shading	-	-	56	el
Fixed Pattern Noise ² in dark (FPN)	-	-	19	el

¹ Black level offset is defined as the difference in dark signal of a black reference line and an active image line.

² FPN is the one- σ value of the highpass image.

Frame Transfer CCD Image Sensor

FT 18

Application information

Current handling

One of the purposes of VPS is to drain the holes that are generated during exposure of the sensor to light. Free electrons are either transported to the VRD connection and, if excessive (from overexposure), free electrons are drained to VNS. No current should flow into any VPS connection of the sensor. During high overexposure a total current 10 to 15mA through all VPS connections together may be expected. The PNP emitter follower in the circuit diagram (figure 6) serves these current requirements.

VNS drains superfluous electrons as a result of overexposure. In other words, it only sinks current. During high overexposure a total current of 10 to 15mA through all VNS connections together may be expected. The NPN emitter follower in the circuit diagram meets these current requirements.

Decoupling of DC voltages

All DC voltages should be decoupled with a 100nF decoupling capacitor. This capacitor must be mounted as close as possible to the sensor pin. Further noise reduction (by bandwidth limiting) is achieved by the resistors in the connections between the sensor and its voltage supplies. The electrons that build up the charge packets that will reach the floating diffusions only add up to a small current, which will flow through VRD. Therefore a large series resistor in the VRD connection may be used.

Outputs

To limit the on-chip power dissipation, the output buffers are designed with open source outputs. Outputs to be used should therefore be loaded with a current source or more simply with a resistance to GND. In order to prevent the output (which typically has an output impedance of about 400Ω) from bandwidth limitation as a result of capacitive loading, load the output with an emitter follower built from

a high-frequency transistor. Mount the base of this transistor as close as possible to the sensor and keep the connection between the emitter and the next stage short. The CCD output buffer can easily be destroyed by ESD. By using this emitter follower, this danger is suppressed; do NOT reintroduce this danger by measuring directly on the output pin of the sensor with an oscilloscope probe. Instead, measure on the output of the emitter follower. Slew rate limitation is prevented by avoiding a too-small quiescent current in the emitter follower; about 10mA should do the job. The collector of the emitter follower should be decoupled properly to suppress the Miller effect from the base-collector capacitance.

A CCD output load resistor of 3.3kΩ typically results in a bandwidth of 110MHz. The bandwidth can be enlarged to about 130MHz by using a resistor of 2.2kΩ instead, which, however, also enlarges the on-chip power dissipation.

Device protection

The output buffers of the FT 18 are likely to be damaged if VPS rises above SFD or RD at any time. This danger is most realistic during power-on or power-off of the camera. The RD voltage should always be lower than the SFD voltage.

Never exceed the maximum output current. This may damage the device permanently. The maximum output current should be limited to 6mA.

Be especially aware that the output buffers of these image sensors are very sensitive to ESD damage.

Because of the fact that our CCDs are built on an n-type substrate, we are dealing with some parasitic npn transistors. To avoid activation of these transistors during switch-on and switch-off of the camera, we recommend the application diagram of figure 6.

Frame Transfer CCD Image Sensor

FT 18

Pin configuration

The FT18 is mounted in a ceramic DIL 32-pin package.
The position of pin 1 is marked with a white dot on top of the package.

Pinning		
Symbol	Name	Pin #
VNS	N substrate	12
VNS	N substrate	21
VPS	P well	5
VPS	P well	28
SFDL	Source Follower Drain Left	9
SFDR	Source Follower Drain Right	24
SFSL	Source Follower Source Left	8
SFSR	Source Follower Source Right	25
VCSL	Current Source Gate Left	7
VCSR	Current Source Gate Right	26
OGL	Output Gate left	6
OGR	Output Gate Right	27
RDL	Reset Drain Left	11
RDR	Reset Drain Right	22
A1	Image Clock (Phase 1)	3
A2	Image Clock (Phase 2)	4
A3	Image Clock (Phase 3)	30
A4	Image Clock (Phase 4)	29
B1	Storage Clock (Phase 1)	1
B2	Storage Clock (Phase 2)	2
B3	Storage Clock (Phase 3)	32
B4	Storage Clock (Phase 4)	31
C1	Register Clock (Phase 1)	14
C1	Register Clock (Phase 1)	19
C2	Register Clock (Phase 2)	15
C2	Register Clock (Phase 2)	18
C3	Register Clock (Phase 3)	16
C3	Register Clock (Phase 3)	17
RGL	Reset Gate Left	13
RGR	Reset Gate Right	20
OUTL	Output Left	10
OUTR	Output Right	23

Frame Transfer CCD Image Sensor

FT 18

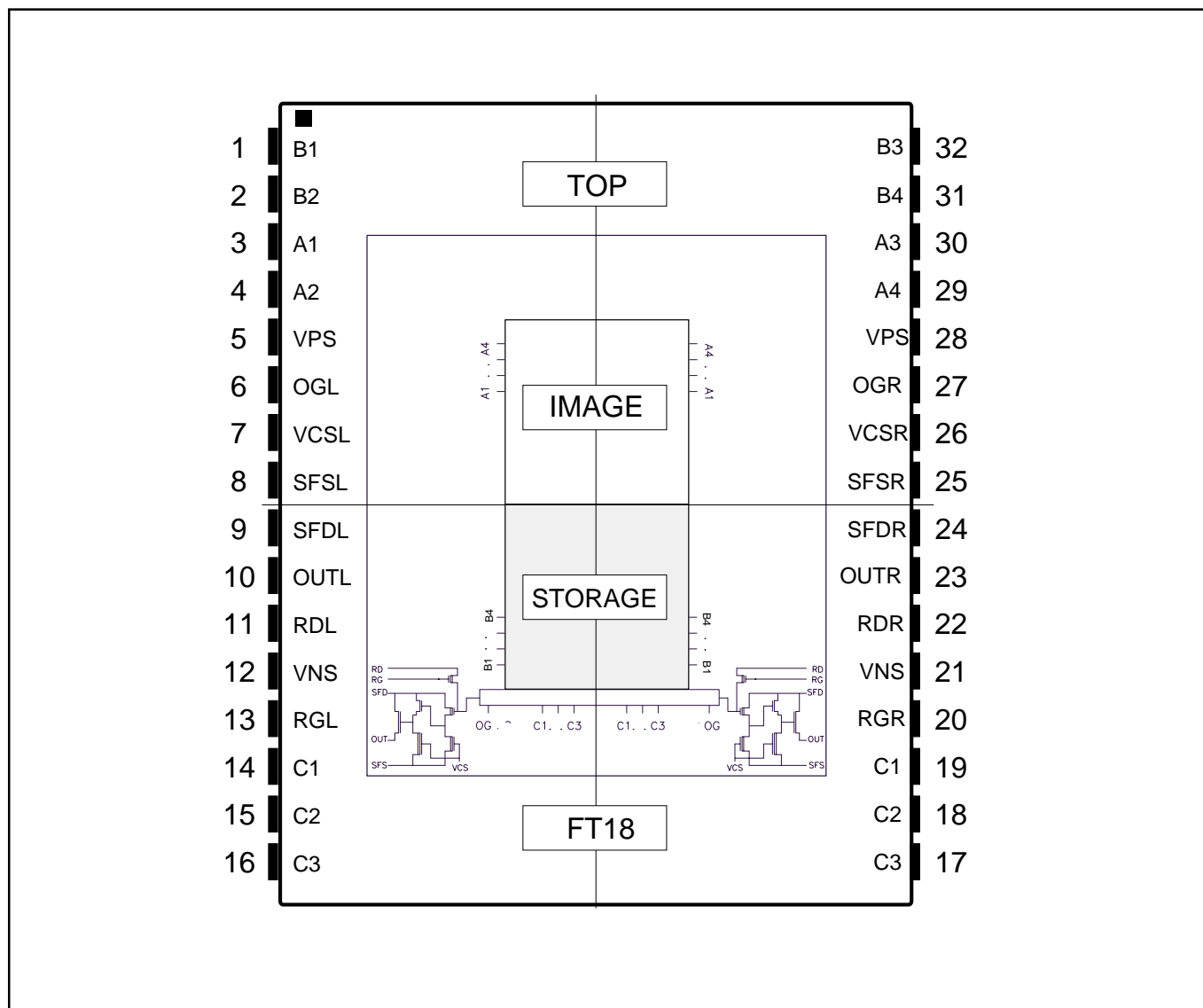


Figure 7 - FT18 pin configuration (top view)

Frame Transfer CCD Image Sensor

FT 18

Order codes

The sensor can be ordered using the following code:

FT18 sensors		
Description	Quality Grade	Order Code
FT18/TG	Test grade	9922 157 32031
FT18/IG	Industrial grade	9922 157 32021
FT18/HG	High grade	9922 157 32011
FT18/SG	Selected grade	9922 157 32001

You can contact the Image Sensors division of Philips Semiconductors at the following address:

Philips Semiconductors
Image Sensors
Internal Postbox WAG-05
Prof. Holstlaan 4
5656 AA Eindhoven
The Netherlands

phone +31 - 40 - 27 44 400
fax +31 - 40 - 27 44 090

www.semiconductors.philips.com/imagers/

Let's make things better.