

Features

- Low Ripple
- High Rejection
- Low Loss

Description

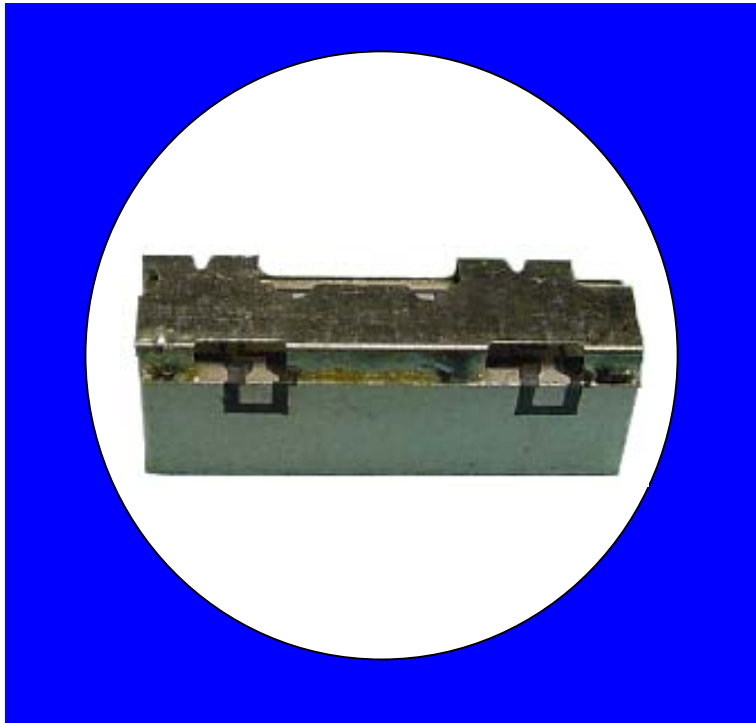
Surface mount, silver (Ag) coated ceramic filter. Developed for use in W-CDMA Infrastructure Applications.

Weight: 4.7 grams typical

Material: Filter is composed of a ceramic block coated with Ag and a shield made of nickel silver plated steel.

Filter complies with RoHS standards.

Electrical Specifications

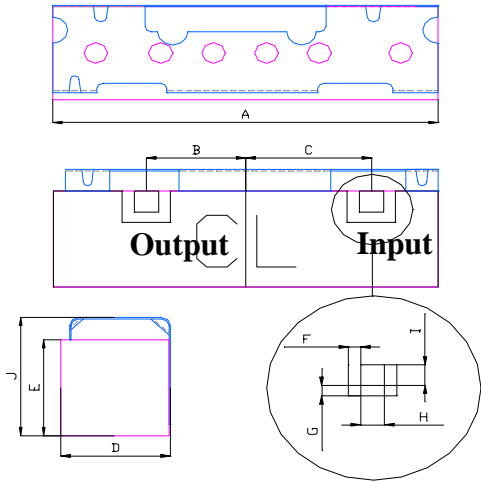


Parameter	Frequency (MHz)	Typical @ 25°C	Specification @ 25C	Spec. over -40°C to +85°C
Passband Insertion Loss	1920 - 1980	1.9	2.2 dB max.	2.4 dB max.
Passband Ripple	1920 - 1980	0.6	0.75 dB max.	0.9 dB max.
Passband Return Loss	1920 - 1980	15.0	10.0 dB min.	10.0 dB min.
Attenuation:	1900	18.0	15.0 dB min.	15.0 dB min.
	2000	18.0	15.0 dB min.	15.0 dB min.
	2110 – 2170	40.0	35.0 dB min.	35.0 dB min.
Power into any port		2 Watt max.		

Note: Supplier shall test each filter to the critical electrical specifications of the above table. Any subsequent audits may deviate from in value due to measurement repeatability among different test systems. Such deviations shall not exceed the following limits:

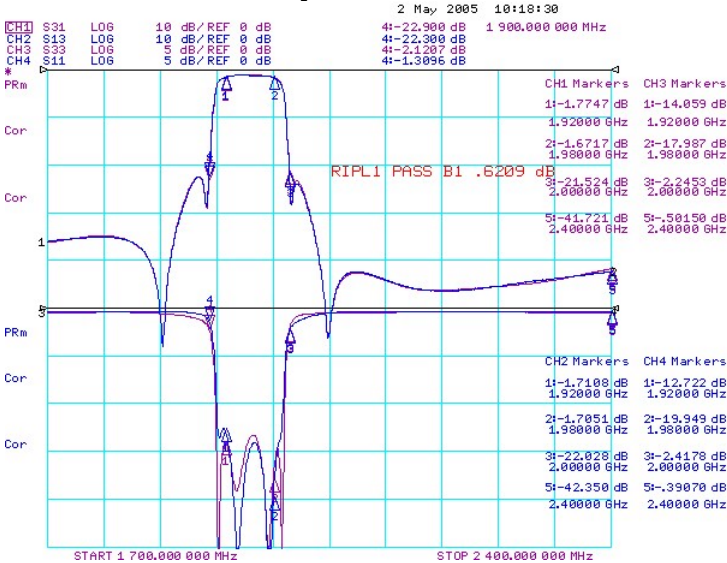
Specification Allowance	
Insertion Loss	0.1 dB
Return Loss	1.0 dB
Stopbands	1.0 dB

Mechanical Drawing

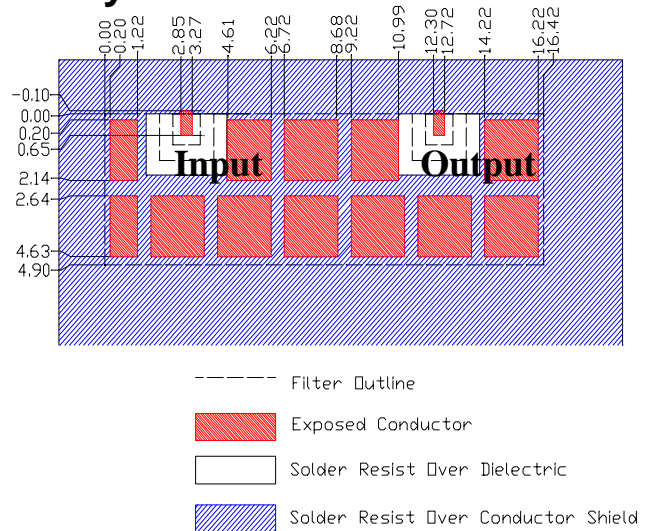


Dim	Nominal (mm)	Tolerance (mm) +/- or max
A	16.42	max
B	4.2	0.13
C	5.3	0.13
D	4.85	max
E	4.9	0.13
F	0.51	0.13
G	0.51	0.13
H	1.02	0.13
I	1.02	0.13
J	6.1	max

Electrical response

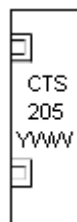
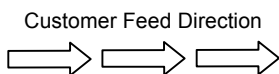
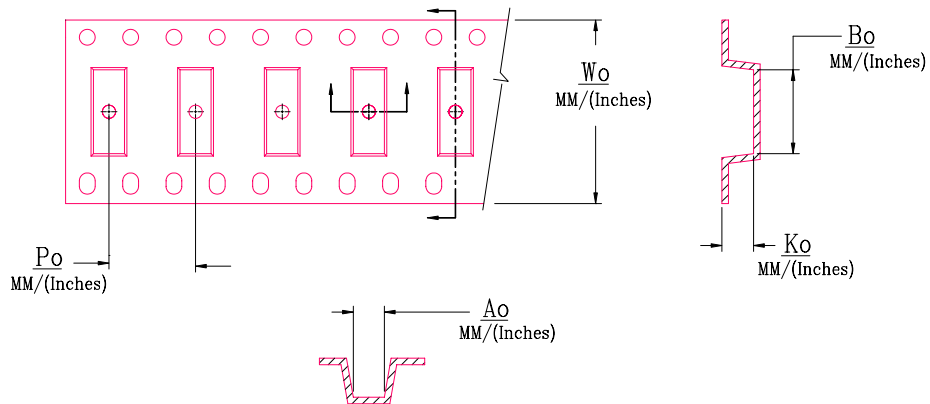


PCB Layout



Packaging and Marking

DIMENSION	UNITS	SPECIFICATION
REEL DIAMETER	mm	330
REEL WEIGHT	kg	3.1
REEL QUANTITY	ea.	500



MODEL NO.	W ₀	A ₀	B ₀	K ₀	P ₀
CER0205	24.0/(0.945)	6.30/(0.248)	16.7/(0.657)	5.10/(0.201)	12.0/(0.472)