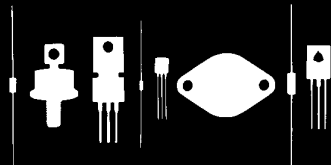


# Central Semiconductor Corp.

145 Adams Avenue,  
Hauppauge, NY 11788 USA  
Tel: (631) 435-1110 • Fax:  
(631) 435-1824



CBR10F-010P SERIES  
CBR25F-010P SERIES  
CBR35F-010P SERIES

FAST RECOVERY  
SILICON BRIDGE RECTIFIERS

10 THRU 35A, 100 THRU 600V

## DESCRIPTION

- The CENTRAL SEMICONDUCTOR CBR10F, CBR25F, CBR35F series types are silicon single phase full wave bridge rectifiers designed for fast recovery applications.
- Standard recovery devices are also available .
- The plastic material used carries Underwriters Laboratory flammability classification 94V-0.
- Utilizes standard 0.25" fast on connectors.
- Wire leaded devices available by adding suffix "W" to part no. (ex: CBR35F-060PW).

## MAXIMUM RATINGS (T<sub>A</sub>=25°C unless otherwise noted)

	SYMBOL	-010P	-020P	-040P	-060P	UNIT
Peak Repetitive Reverse Voltage	V <sub>RRM</sub>	100	200	400	600	V
DC Blocking Voltage	V <sub>R</sub>	100	200	400	600	V
RMS Reverse Voltage	V <sub>R(RMS)</sub>	70	140	280	420	V

## Average Forward Current (T<sub>C</sub>=60°C)

I <sub>0</sub>		UNIT
CBR10F-010P SERIES	10	A
CBR25F-010P SERIES	25	A
CBR35F-010P SERIES	35	A

## Peak Forward Surge Current (JEDEC)

I <sub>FSM</sub>		UNIT
CBR10F-010P SERIES	200	A
CBR25F-010P SERIES	300	A
CBR35F-010P SERIES	400	A

## Operating and Storage Junction Temperature

T<sub>J</sub>, T<sub>STG</sub> -65 to +150 °C

## Maximum Thermal Resistance

θ<sub>JC</sub> 1.5 °C/W

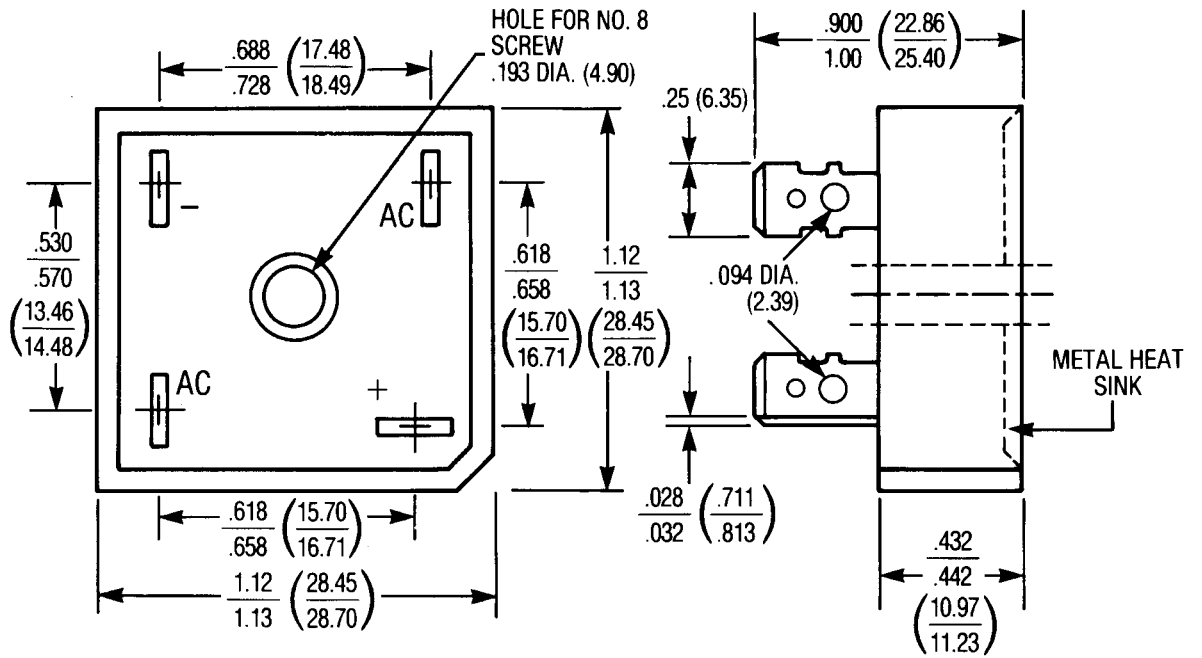
## Isolation Voltage (case to leads)

V<sub>iso</sub> 2500 Vac

## ELECTRICAL CHARACTERISTICS (T<sub>A</sub>=25°C)

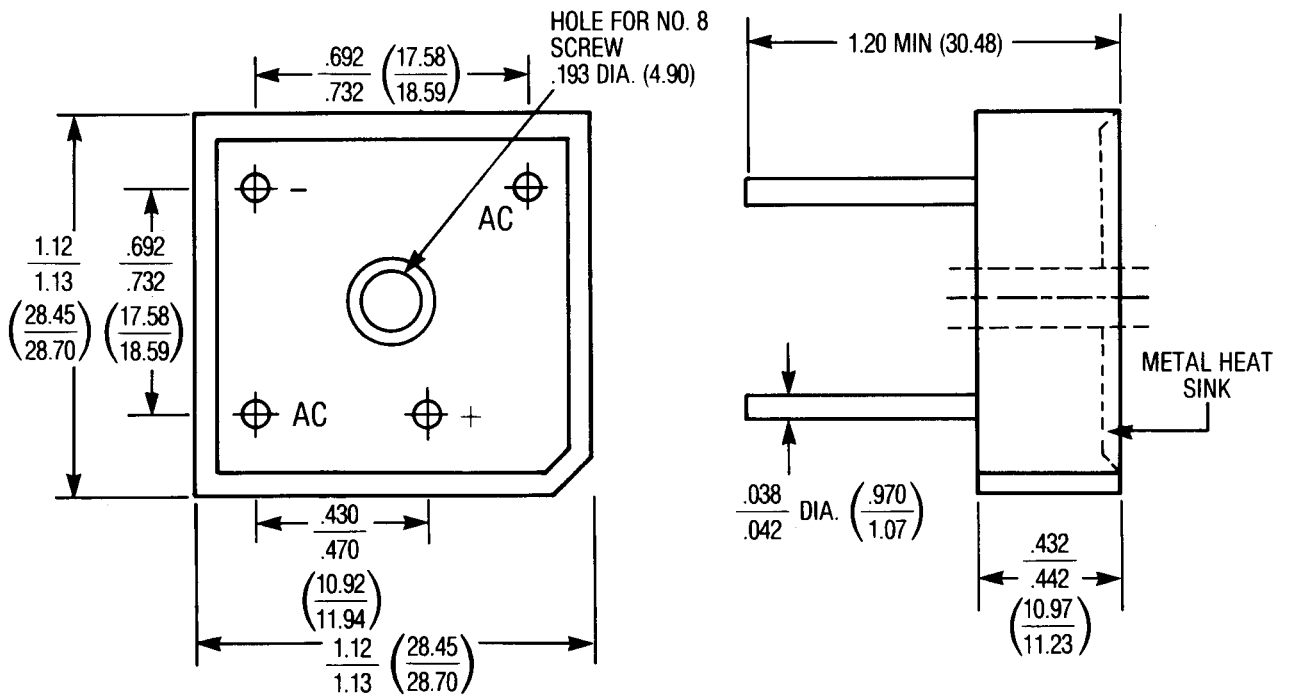
		MIN	MAX	UNIT
V <sub>F</sub>	I <sub>F</sub> =½ Rated I <sub>0</sub>		1.3	V
I <sub>R</sub>	V <sub>R</sub> =Rated V <sub>RRM</sub>		10	μA
t <sub>rr</sub>	I <sub>F</sub> =0.5A, I <sub>R</sub> =1.0A, I <sub>rr</sub> =0.25A (-010P thru -040P)		200	ns
t <sub>rr</sub>	I <sub>F</sub> =0.5A, I <sub>R</sub> =1.0A, I <sub>rr</sub> =0.25A (-060P)		350	ns

### -010P SERIES



**DIMENSIONS IN INCHES (MILLIMETERS)**

### -010PW SERIES



**DIMENSIONS IN INCHES (MILLIMETERS)**