



# SAW Components

Data Sheet B7637





SAW Components

B7637

Low-Loss Filter for Mobile Communication

836,5 / 881,5 MHz

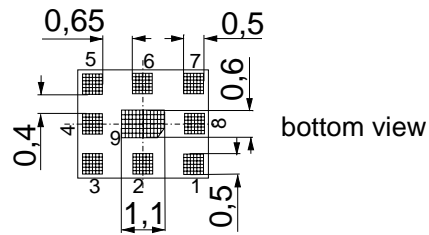
Data Sheet



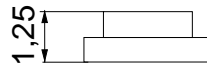
Chip Sized SAW Package QCS9D

Features

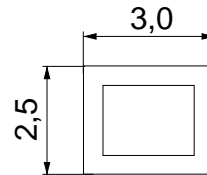
- Low-loss duplexer for cellular band mobile telephone systems
- 50 Ω ports by integrated matching network
- Package for Surface Mounted Technology (SMT)
- Small size and low height
- RoHS compliant



bottom view



side view



top view

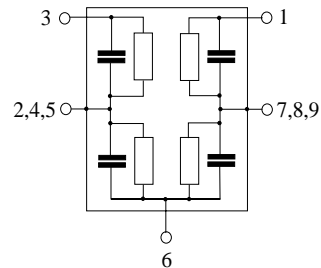
Dimensions in mm, approx. weight 0,035 g

Terminals

Ni, gold-plated

Pin configuration

- 1 TX Input
- 3 RX Output
- 6 Antenna
- 2, 4, 5 Ground
- 7, 8, 9 Ground



Type	Ordering code	Marking and Package according to	Packing according to
B7637	B39881-B7637-L710	C61157-A3-A12	F61074-V8211-Z000

Electrostatic Sensitive Device (ESD)

Maximum ratings

Operable temperature range	$T$	- 30/+ 85	°C	machine model, 10 pulses source and load impedance 50 Ω } continuous wave
Storage temperature range	$T_{stg}$	- 40/+ 85	°C	
DC voltage	$V_{DC}$	5	V	
ESD voltage	$V_{ESD}$	100 <sup>1)</sup>	V	
Input power max.	$P_{IN}$			
824,0 ... 849,0 MHz		30	dBm	}
elsewhere		10	dBm	

1) -acc. to JESD22-115A (Machine Model), 10 negative & 10 positive pulses



Data Sheet



Characteristics

Operating temperature range  $T = 25 \pm 2^\circ\text{C}$   
 Terminating impedance  $Z_{\text{ANT}} = 50 \Omega$ ;  $Z_{\text{RX}} = 50 \Omega$ ;  $Z_{\text{TX}} = 50 \Omega$

Characteristics TX - ANT		min.	typ.	max.	
Center frequency	$f_c$	—	836,50	—	MHz
Maximum insertion attenuation	$\alpha_{\text{max}}$				
	824,00 ... 849,00 MHz	—	1,8	2,1	dB
Amplitude ripple (p-p)	$\Delta\alpha$				
	824,00 ... 849,00 MHz	—	0,8	1,1	dB
Return loss					
	824,00 ... 849,00 MHz	10	12	—	dB
Attenuation	$\alpha$				
	100,00 ... 698,00 MHz	35	39	—	dB
	698,00 ... 746,00 MHz	36	38	—	dB
	746,00 ... 804,00 MHz	30	38	—	dB
	869,00 ... 894,00 MHz	46	50	—	dB
	954,00 ... 1570,00 MHz	30	36	—	dB
	1570,00 ... 1698,00 MHz	40	50	—	dB
	1698,00 ... 2547,00 MHz	30	38	—	dB
	2547,00 ... 3000,00 MHz	20	27	—	dB

Characteristics ANT - RX		min.	typ.	max.	
Center frequency	$f_c$	—	881,50	—	MHz
Maximum insertion attenuation	$\alpha_{\text{max}}$				
	869,00 ... 894,00 MHz	—	2,2	2,6	dB
Amplitude ripple (p-p)	$\Delta\alpha$				
	869,00 ... 894,00 MHz	—	0,9	1,3	dB
Return loss					
	869,00 ... 894,00 MHz	9	11	—	dB
Attenuation	$\alpha$				
	100,00 ... 804,00 MHz	35	43	—	dB
	824,00 ... 849,00 MHz	54	61	—	dB
	954,00 ... 1648,00 MHz	35	45	—	dB
	1648,00 ... 1698,00 MHz	40	51	—	dB
	1698,00 ... 2547,00 MHz	40	50	—	dB
	2547,00 ... 3000,00 MHz	35	45	—	dB
TX band phase @ RX port reference plane					
	824,00 ... 849,00 MHz	130	—	230	degree



SAW Components

B7637

Low-Loss Filter for Mobile Communication

836,5 / 881,5 MHz

Data Sheet



Characteristics TX - RX		min.	typ.	max.	
Isolation between TX and RX path $\alpha$					
100,00 ...	800,00 MHz	50	57	—	dB
824,00 ...	849,00 MHz	56	59	—	dB
869,00 ...	894,00 MHz	47	50	—	dB
954,00 ...	1700,00 MHz	45	51	—	dB



Data Sheet



Characteristics

Operating temperature range  $T = -30$  to  $85^{\circ}\text{C}$   
 Terminating impedance  $Z_{\text{ANT}} = 50\ \Omega$ ;  $Z_{\text{RX}} = 50\ \Omega$ ;  $Z_{\text{TX}} = 50\ \Omega$

Characteristics TX - ANT		min.	typ.	max.	
Center frequency	$f_c$	—	836,50	—	MHz
Maximum insertion attenuation	$\alpha_{\text{max}}$				
	824,00 ... 849,00 MHz	—	2,0	2,3	dB
Amplitude ripple (p-p)	$\Delta\alpha$				
	824,00 ... 849,00 MHz	—	1,0	1,3	dB
Return loss					
	824,00 ... 849,00 MHz	9	11	—	dB
Attenuation	$\alpha$				
	100,00 ... 698,00 MHz	35	39	—	dB
	698,00 ... 746,00 MHz	36	38	—	dB
	746,00 ... 804,00 MHz	30	38	—	dB
	869,00 ... 894,00 MHz	45	48	—	dB
	954,00 ... 1570,00 MHz	30	36	—	dB
	1570,00 ... 1698,00 MHz	40	50	—	dB
	1698,00 ... 2547,00 MHz	30	38	—	dB
	2547,00 ... 3000,00 MHz	20	27	—	dB

Characteristics ANT - RX		min.	typ.	max.	
Center frequency	$f_c$	—	881,50	—	MHz
Maximum insertion attenuation	$\alpha_{\text{max}}$				
	869,00 ... 894,00 MHz	—	2,4	2,8	dB
Amplitude ripple (p-p)	$\Delta\alpha$				
	869,00 ... 894,00 MHz	—	1,3	1,7	dB
Return loss					
	869,00 ... 894,00 MHz	8	10	—	dB
Attenuation	$\alpha$				
	100,00 ... 804,00 MHz	35	43	—	dB
	824,00 ... 849,00 MHz	54	59	—	dB
	954,00 ... 1648,00 MHz	35	46	—	dB
	1648,00 ... 1698,00 MHz	40	51	—	dB
	1698,00 ... 2547,00 MHz	40	50	—	dB
	2547,00 ... 3000,00 MHz	35	45	—	dB
TX band phase @ RX port reference plane					
	824,00 ... 849,00 MHz	130	—	230	degree



SAW Components

B7637

Low-Loss Filter for Mobile Communication

836,5 / 881,5 MHz

Data Sheet



Characteristics TX - RX		min.	typ.	max.	
Isolation between TX and RX path $\alpha$					
100,00 ...	800,00 MHz	50	56	—	dB
824,00 ...	849,00 MHz	55	57	—	dB
869,00 ...	894,00 MHz	47	49	—	dB
954,00 ...	1700,00 MHz	45	51	—	dB



SAW Components

B7637

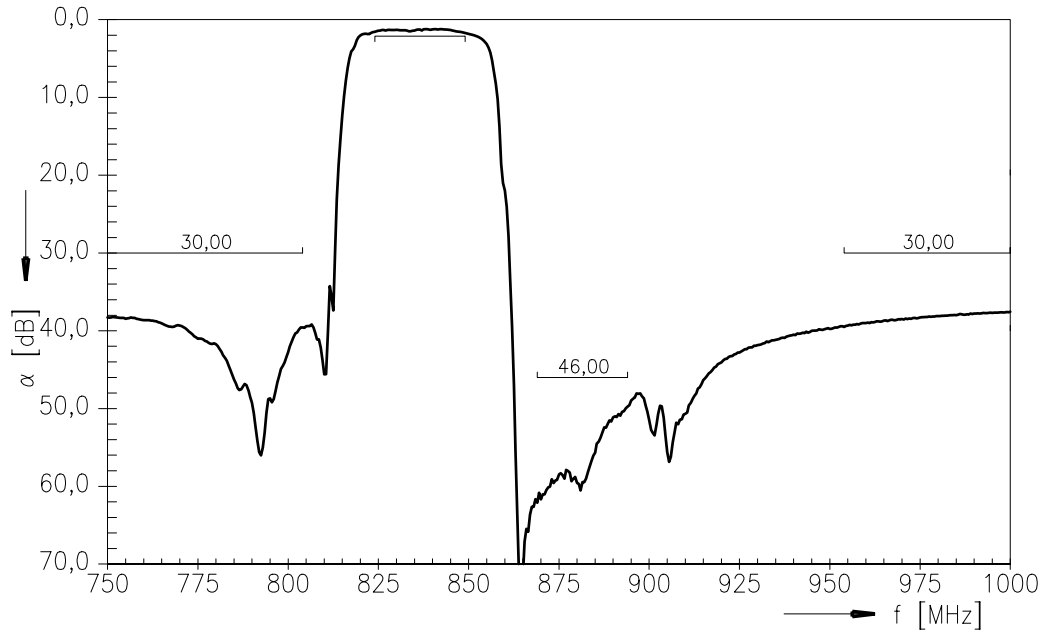
Low-Loss Filter for Mobile Communication

836,5 / 881,5 MHz

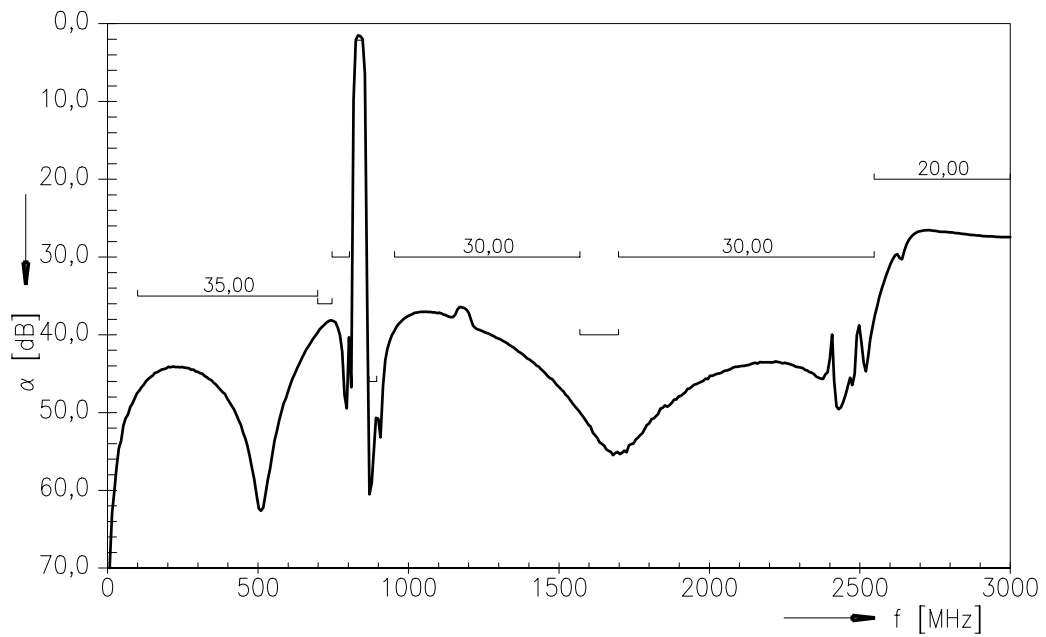
Data Sheet



Frequency Response TX - ANT

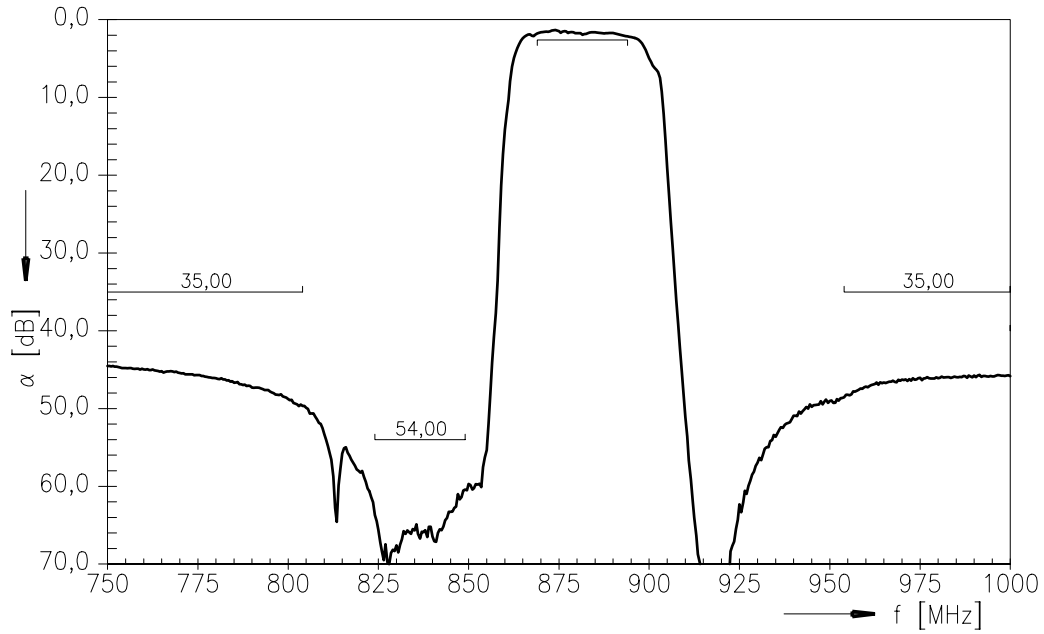


Frequency Response TX - ANT (wideband)

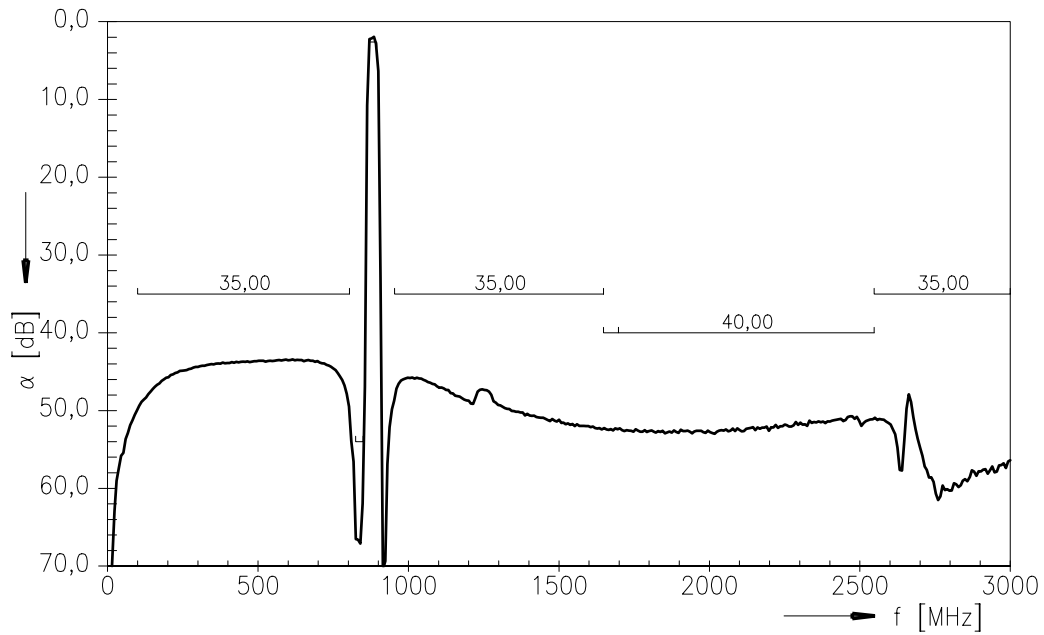




Frequency Response ANT - RX



Frequency Response ANT - RX (wideband)







SAW Components

B7637

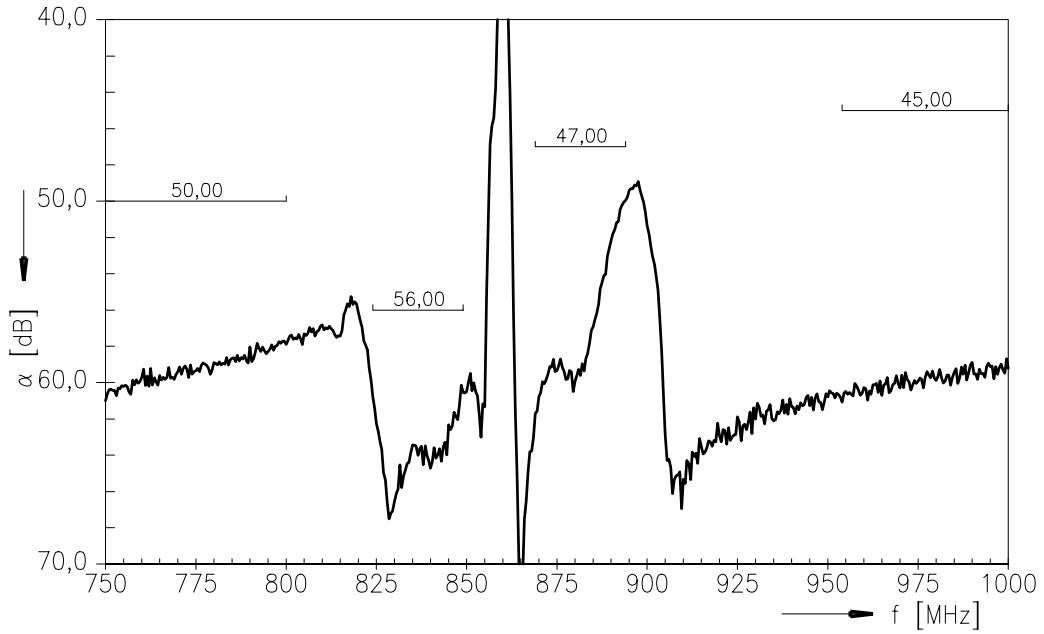
Low-Loss Filter for Mobile Communication

836,5 / 881,5 MHz

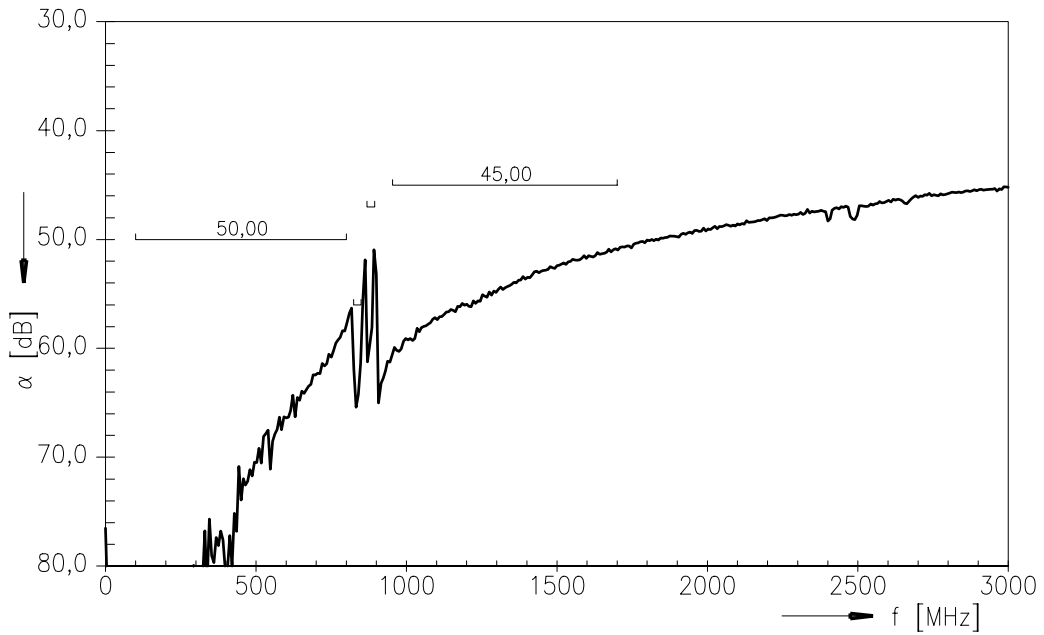
Data Sheet



Frequency Response TX - RX



Frequency Response TX - RX (wideband)





**SAW Components**

**B7637**

**Low-Loss Filter for Mobile Communication**

**836,5 / 881,5 MHz**

Data Sheet



**Published by EPCOS AG**

**Surface Acoustic Wave Components Division, SAW MC WT**

**P.O. Box 80 17 09, 81617 Munich, GERMANY**

© EPCOS AG 2005. Reproduction, publication and dissemination of this brochure and the information contained therein without EPCOS' prior express consent is prohibited.

Purchase orders are subject to the General Conditions for the Supply of Products and Services of the Electrical and Electronics Industry recommended by the ZVEI (German Electrical and Electronic Manufacturers' Association), unless otherwise agreed.

This brochure replaces the previous edition.

For questions on technology, prices and delivery please contact the Sales Offices of EPCOS AG or the international Representatives.

Due to technical requirements components may contain dangerous substances. For information on the type in question please also contact one of our Sales Offices.