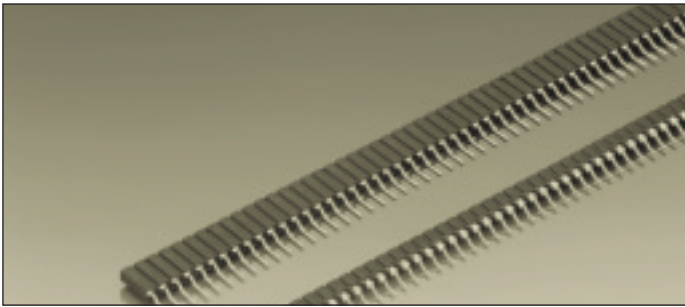


Series 800

PCB connectors 2.54 mm

Single row / double row / surface mount



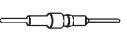


Receptacles, surface mount



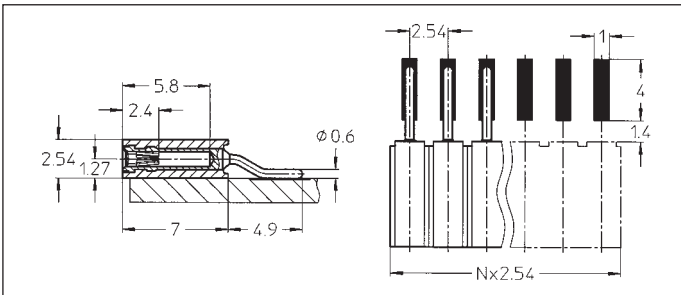
Accept square pins \square 0.635 mm
and round pins \varnothing 0.70–0.80 mm

For corresponding pin connectors see
pages 30 to 35

Platings	Sleeve 	Clip 	Pin 
91	5 μ m Sn Pb	0.25 μ m Au	
93	5 μ m Sn Pb	0.75 μ m Au	
99	5 μ m Sn Pb	5 μ m Sn Pb	

Ordering information

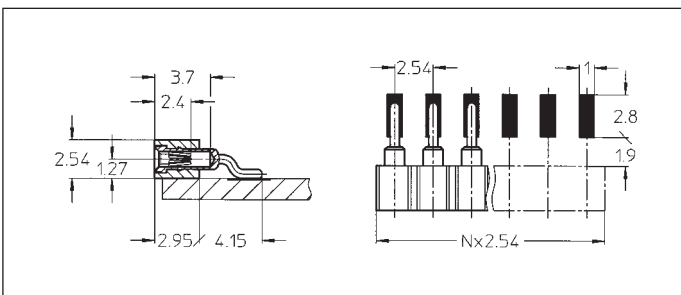
Replace **xxx** with the number of poles, e.g. 803-91-**xxx**-40-001
for a double row version with 8 pins per row becomes:
803-91-**016**-40-001



- 801-91-xxx-40-001
- 801-93-xxx-40-001
- 801-99-xxx-40-001

SMD receptacle: single row
parallel mount

Availability from: 1 to 50 contacts
Standard number of contacts 24,
28, 29, 30, 36, 42, 48 and 50



- 801-91-xxx-40-002
- 801-93-xxx-40-002
- 801-99-xxx-40-002

SMD receptacle: single row, low
profile, parallel mount

Availability from: 1 to 32 contacts
Standard number of contacts 32