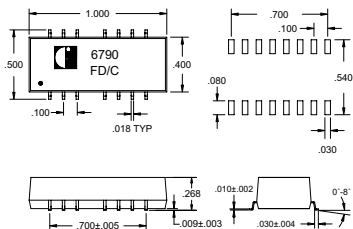


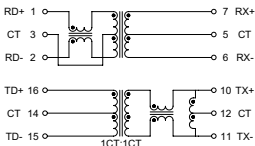
- Provides excellent EMI filtering
- Designed for use with data grade unshielded twisted pair cable (UTP-5)
- Suitable for adapter card cable and multiport applications
- Meets IEEE 802.3 and ANSI X3.263 standards, including 350 μ H OCL with 8mA DC bias


MECHANICAL AND SCHEMATIC (All dimensions in inches)

SUGGESTED PAD LAYOUT



SCHEMATIC


 UNLESS OTHERWISE SPECIFIED, ALL TOLERANCES ARE ± 0.010
ELECTRICAL SPECIFICATION @ 25°C

Part Number	Insertion Loss (dB Max)	Return Loss (dB Min @ 100 Ω)					Differential to Common Mode Rejection (dB Min)			Crosstalk (dB Typ)			Hipot (Vrms)
		0.1-100 MHz	1-30 MHz	40 MHz	50 MHz	60-80 MHz	30 MHz	60 MHz	100 MHz	30 MHz	60 MHz	100 MHz	
6790	-1.0	-18	-18	-16	-12	-50	-45	-40	-55	-50	-50	1500	

Turns Ratio @ 20 kHz, 0.5 V:

 (1-2):(7-6)=1CT:1CT $\pm 2\%$
 (15-16):(11-10)=1CT:1CT $\pm 2\%$

Inductance @ 100kHz, 100mV, 8mA:

 350 μ H Min (15-16)
 350 μ H Min (1-2)