

RECTIFIER STACK (HIGH-SPEED CENTER TAP)

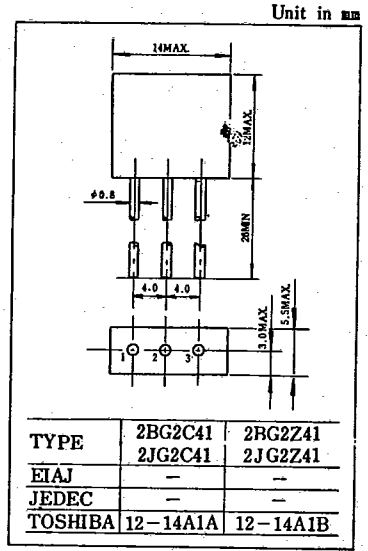
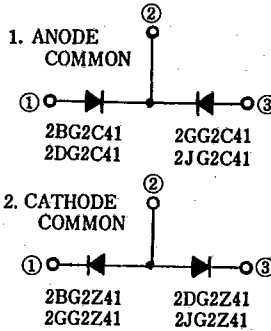
39 DE 9097250 0002339 2

2JG2C41 600V 2A

MAXIMUM RATINGS

CHARACTERISTIC	SYMBOL	RATING	UNIT
Repetitive Peak reverse voltage	V _{RRM}	2BG2C41, 2BG2Z41	100
		2DG2C41, 2DG2Z41	200
		2GG2C41, 2GG2Z41	400
		2JG2C41, 2JG2Z41	600
Average Output Rectified Current (Fig. 1)	I _O	2.0	A
Peak One Cycle Surge Forward Current (Non-Repetitive)	I _{FSM}	50(50Hz)	A
Junction Temperature	T _j	-40~125	°C
Storage Temperature Range	T _{stg}	-40~125	°C

POLARITY

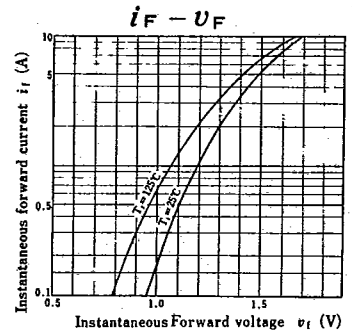
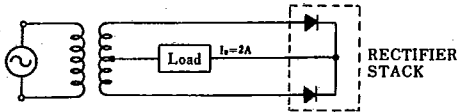


ELECTRICAL CHARACTERISTICS

CHARACTERISTIC	SYMBOL	CONDITION	MIN.	TYP.	MAX.	UNIT
Peak Forward Voltage	V _{FM}	I _{FM} =2A, T _a =25°C	-	-	1.3	V
Repetitive Peak Reverse Current	I _{RRM}	V _{RRM} =Rated, T _a =125°C	-	-	0.5	mA
Reverse Recovery Time	t _{rr}	I _F =20mA, I _R =1mA, T _a =25°C	-	-	1.5	μA
Thermal Resistance	R _{th(j-a)}	DC	-	-	45	°C/W

Notes : 1. Soldering : 6 mm is the minimum to be kept between case and soldering part.
2. Lead Bending : 6 mm is the minimum to be kept from the case when bend the lead wire.

Fig.1 NORMAL CIRCUIT.

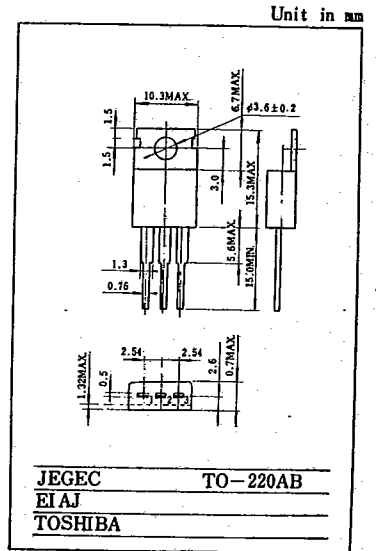
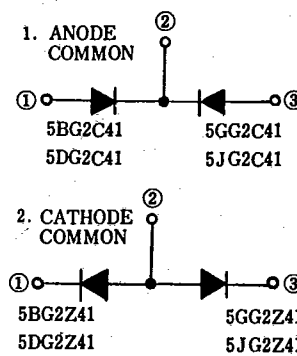


5JG2C41 600V 5A

MAXIMUM RATINGS

CHARACTERISTIC	SYMBOL	RATING	UNIT
Repetitive Peak Reverse Voltage	V _{RRM}	5BG2C41, 5BG2Z41	100
		5DG2C41, 5DG2Z41	200
		5GG2C41, 5GG2Z41	400
		5JG2C41, 5JG2Z41	600
Average Output Rectified Current (Fig 1)	I _O	5	A
Peak One Cycle Surge Forward Current (Non-Repetitive)	I _{FSM}	30(50Hz)	A
Storage Temperature Range	T _{stg}	-20~150	°C
Junction Temperature	T _j	-20~150	°C

POLARITY



ELECTRICAL CHARACTERISTICS

CHARACTERISTIC	SYMBOL	CONDITION	MIN.	TYP.	MAX.	UNIT
Peak Forward Voltage	V _{FM}	I _{FM} =5A, T _a =25°C	-	-	1.6	V
Repetitive Peak Reverse Current	I _{RRM}	V _{RRM} =Rated, T _a =150°C	-	-	6.0	mA
Reverse Recovery Time	t _{rr} (1)	I _F =20mA, I _R =1mA	-	-	1.5	μs
	t _{rr} (2)	I _F =1.0A, V _R =30V, T _a =25°C	-	-	200	ns
Thermal Resistance	R _{th(j-c)}	DC	-	-	5	°C/W

Fig.1 NORMAL CIRCUIT.

