

TOSHIBA DUPER FAST RECOVERY RECTIFIER SILICON DIFFUSED TYPE

1R5DU41

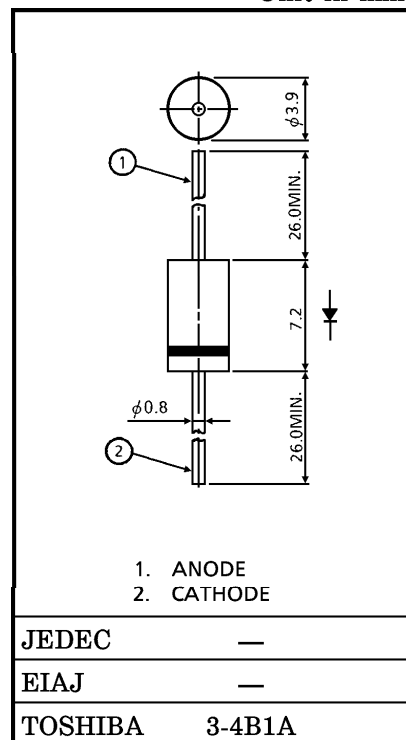
SWITCHING TYPE POWER SUPPLY APPLICATIONS

Unit in mm

- Repetitive Peak Reverse Voltage : $V_{RRM}=200V$
- Average Forward Current : $I_F(AV)=1.5A$ ($T_a=25^{\circ}C$)
- Very Fast Reverse-Recovery Time : $t_{rr}=100ns$ (MAX.)

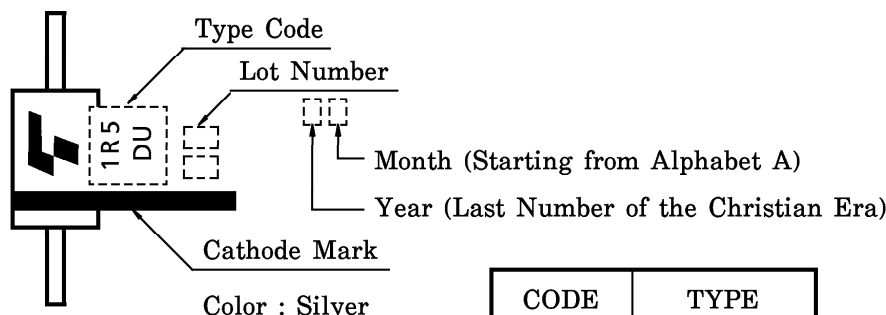
MAXIMUM RATINGS ($T_a=25^{\circ}C$)

CHARACTERISTIC	SYMBOL	RATING	UNIT
Repetitive Peak Reverse Voltage	V_{RRM}	200	V
Average Forward Current	$I_F(AV)$	1.5	A
Peak One Cycle Surge Forward Current (Non Repetitive)	I_{FSM}	60 (50Hz)	A
Junction Temperature	T_j	-40~150	$^{\circ}C$
Storage Temperature Range	T_{stg}	-40~150	$^{\circ}C$



Weight : 0.47g

MARKING



CODE	TYPE
1R5DU	1R5DU41

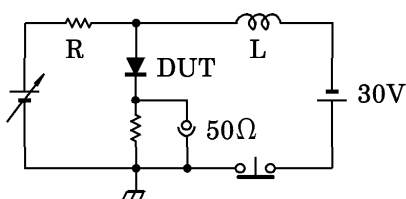
961001EAA1

- TOSHIBA is continually working to improve the quality and the reliability of its products. Nevertheless, semiconductor devices in general can malfunction or fail due to their inherent electrical sensitivity and vulnerability to physical stress. It is the responsibility of the buyer, when utilizing TOSHIBA products, to observe standards of safety, and to avoid situations in which a malfunction or failure of a TOSHIBA product could cause loss of human life, bodily injury or damage to property. In developing your designs, please ensure that TOSHIBA products are used within specified operating ranges as set forth in the most recent products specifications. Also, please keep in mind the precautions and conditions set forth in the TOSHIBA Semiconductor Reliability Handbook.
- The information contained herein is presented only as a guide for the applications of our products. No responsibility is assumed by TOSHIBA CORPORATION for any infringements of intellectual property or other rights of the third parties which may result from its use. No license is granted by implication or otherwise under any intellectual property or other rights of TOSHIBA CORPORATION or others.
- The information contained herein is subject to change without notice.

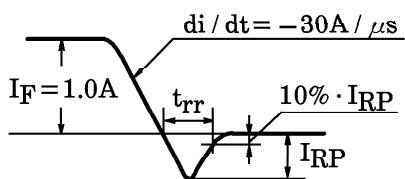
ELECTRICAL CHARACTERISTICS (Ta = 25°C)

CHARACTERISTIC	SYMBOL	TEST CONDITION	MIN.	TYP.	MAX.	UNIT
Peak Forward Voltage	V _{FM}	I _{FM} = 1.5A	—	—	1.2	V
Repetitive Peak Reverse Current	I _{RRM}	V _{RRM} = 200V	—	—	50	μA
Reverse Recovery Time (Note 1)	t _{rr}	I _F = 1A, di/dt = -30A/μs	—	—	100	ns
Forward Recovery Time (Note 2)	t _{fr}	I _F = 1.0A	—	—	200	ns
Thermal Resistance (Note 3)	R _{th(j-a)}	Junction to Ambient	—	—	68	°C/W
Thermal Resistance (Note 3)	R _{th(j-l)}	Junction to Lead	—	—	30	°C/W

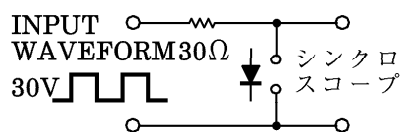
Note 1 : t_{rr} TEST CIRCUIT



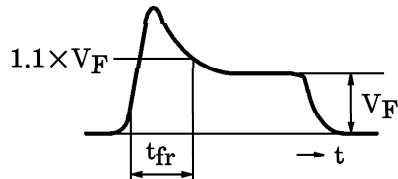
t_{rr} WAVEFORM



Note 2 : t_{fr} TEST CIRCUIT



t_{fr} WAVEFORM



Note 3 : THERMAL RESISTANCE

