

Termination SMA

NEW!
ANNE-50X

50Ω DC to 20 GHz



CASE STYLE: LL561
CONNECTOR: SMA MALE

Features

- wideband coverage, DC to 20 GHz
- return loss, 40 dB typ. up to 4 GHz and 30 dB typ. 10 to 20 GHz
- rugged construction

Applications

- cellular communications
- satellite communications
- test set-up
- defense & radar

Electrical Specifications $T_{AMB}=25^{\circ}C$

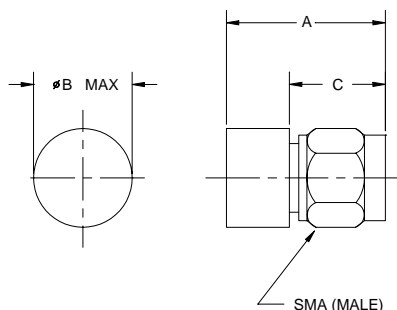
| MODEL NO. | FREQUENCY (GHz) f_L - f_U | IMPEDANCE (OHMS) | RETURN LOSS (dB) Min. | | | | POWER* RATING (W) | PRICE \$ Qty. (1-9) |
|-----------|----------------------------------|------------------|--------------------------|----------|-----------|-----------|-------------------|---------------------|
| | | | DC-8 GHz | 8-12 GHz | 12-18 GHz | 18-20 GHz | | |
| ANNE-50X | DC-20 | 50 | 30 | 26 | 24 | 22 | 1.0 | 13.95 |

*at 50°C, derate linearly to 350mW at 100°C

Maximum Ratings

| | |
|-----------------------|----------------|
| Operating Temperature | -55°C to 100°C |
| Storage Temperature | -55°C to 100°C |

Outline Drawing

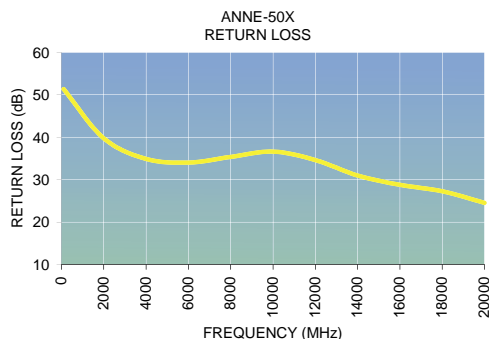


Outline Dimensions (inch/mm)

| A | B | C | wt. grams |
|-------|------|------|-----------|
| .58 | .37 | .35 | 4.0 |
| 14.73 | 9.40 | 8.89 | |

Typical Performance Data

| Freq. (MHz) | Return Loss (dB) | |
|-------------|------------------|-------|
| | Avg. | Sigma |
| 100.00 | 51.34 | 6.32 |
| 2000.00 | 39.76 | 2.09 |
| 4000.00 | 34.90 | 1.61 |
| 6000.00 | 34.04 | 1.75 |
| 8000.00 | 35.38 | 2.46 |
| 10000.00 | 36.62 | 2.66 |
| 12000.00 | 34.63 | 3.39 |
| 14000.00 | 30.99 | 2.53 |
| 16000.00 | 28.79 | 2.66 |
| 18000.00 | 27.29 | 3.49 |
| 20000.00 | 24.54 | 3.54 |



Distribution Centers NORTH AMERICA 800-654-7949 • 417-335-5935 • Fax 417-335-5945 • EUROPE 44-1252-832600 • Fax 44-1252-837010

Mini-Circuits ISO 9001 & ISO 14001 Certified

INTERNET <http://www.minicircuits.com>

P.O. Box 350166, Brooklyn, New York 11235-0003 (718) 934-4500 Fax (718) 332-4661

REV. C
M95419
ED-11192A
ANNE-50X
TD/RS/CP
041116