

APPLICATIONS

- ✓ Remote DC Power Supply, Base Station & Microwave Protection
- ✓ MIL-STD-1275 Power Bus Protection
- ✓ Electric Drive Motors & Controls
- ✓ Mobile Electronics Operating in Harsh Environments

IEC COMPATIBILITY (EN61000-4)

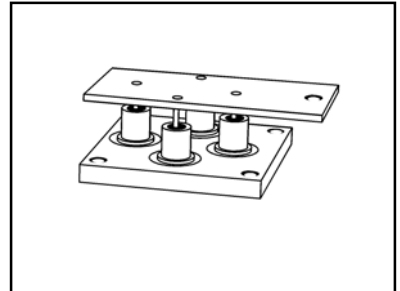
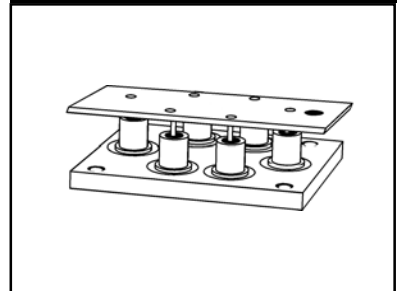
- ✓ 61000-4-5 (Surge): 95A, 8/20 μ s Level 3 (Line-Ground) & Level 4 (Line-Line)

FEATURES

- ✓ Meets MIL-STD-1275 Military Specification
- ✓ 10 & 30 kilowatts Peak Pulse Power per Line (tp=1ms)
- ✓ Each Device 100% Tested
- ✓ High Average (DC) Power Dissipation
- ✓ Superior Heat Dissipation Capability
- ✓ Small Package Size

MECHANICAL CHARACTERISTICS

- ✓ Hermetically Sealed Sub-Assemblies
- ✓ Weight 38 grams - GPZ532 & 65 grams - GPZ1275 (Approximate)
- ✓ Flammability Rating UL 94V-0
- ✓ Device Marking: Logo, Date Code & Part Number


GPZ532

GPZ1275

MAXIMUM RATINGS @ 25°C Unless Otherwise Specified

PARAMETER	SYMBOL	VALUE	UNITS
Peak Pulse Power (tp = 1ms) - See Fig. 1	P_{PP}	10 & 30	kilowatts
Operating Temperature	T_L	-55 to 150	°C
Storage Temperature	T_{STG}	-55 to 150	°C
Steady State Power Dissipation @ 25°C (derate 2.33W/°C)	T_A	350	Watts

GPZ532 thru GPZ1275

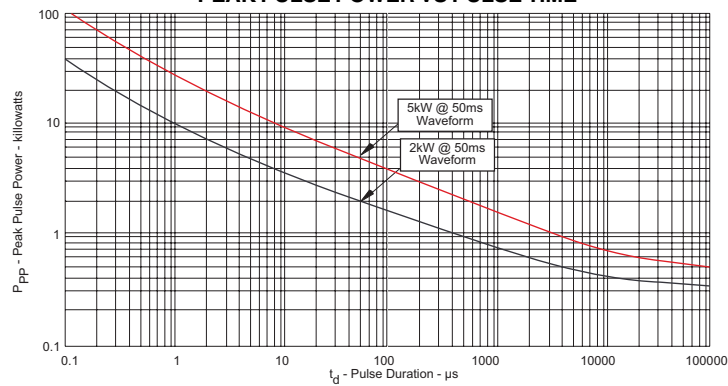
DEVICE CHARACTERISTICS

ELECTRICAL CHARACTERISTICS PER LINE @ 25°C Unless Otherwise Specified

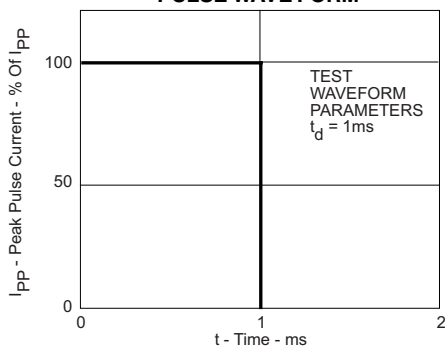
PART NUMBER (See Note 1)	RATED STAND-OFF VOLTAGE V_{WM} VOLTS	MINIMUM BREAKDOWN VOLTAGE		MAXIMUM CLAMPING VOLTAGE (See Fig. 2) @ I_{PPM} V_C VOLTS	MAXIMUM LEAKAGE CURRENT @ V_{WM} I_D μA	MAXIMUM PEAK PULSE CURRENT (See Fig. 2) I_{PPM} AMPS
		$V_{(BR)}$ VOLTS	@ I_T AMPS			
GPZ532	28	32	0.2	40	50	100
GPZ1275	28	32	0.03	55	60	500

Note 1: Maximum $V_f = 3.5V$ @ 100A, 8.3ms (sine wave).

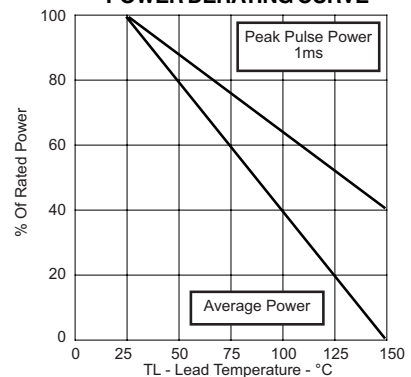
**FIGURE 1
PEAK PULSE POWER VS PULSE TIME**



**FIGURE 2
PULSE WAVE FORM**



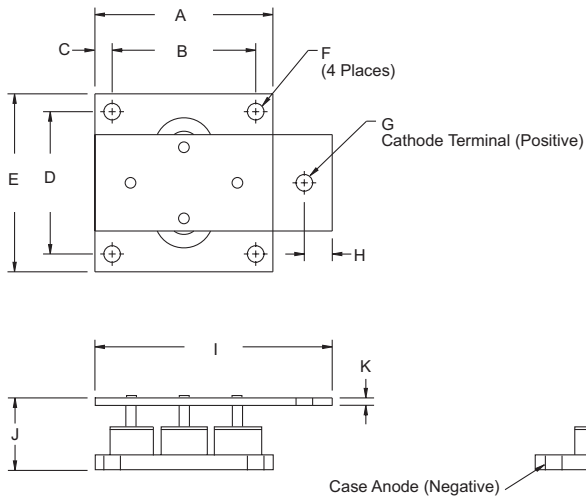
**FIGURE 3
POWER DERATING CURVE**



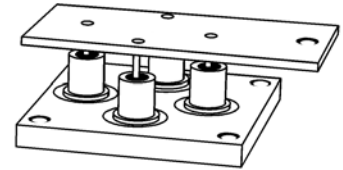
GPZ532 thru GPZ1275

PACKAGE OUTLINE & DIMENSIONS

GPZ532 PACKAGE OUTLINE



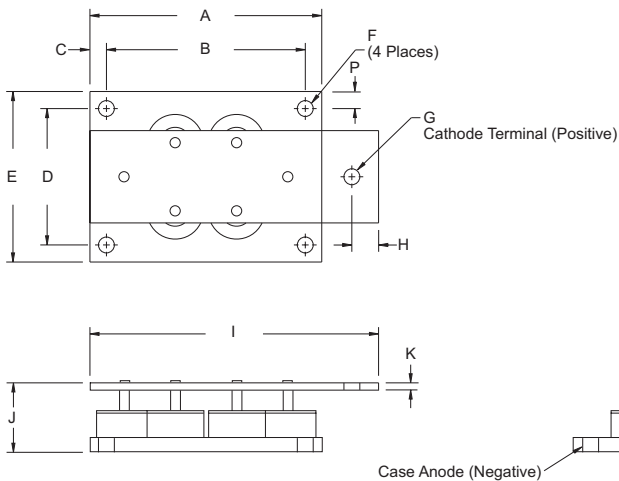
GPZ532



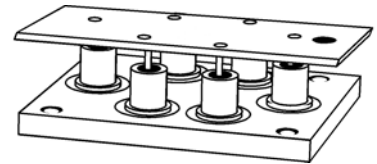
DIMENSIONS

DIM	MILLIMETERS	INCHES
A	38.10 TYP	1.50 TYP
B	30.48 TYP	1.20 TYP
C	3.81 TYP	0.15 TYP
D	30.48 TYP	1.20 TYP
E	38.10 TYP	1.50 TYP
F	3.56 DIA	0.14 DIA
G	3.56 DIA	0.14 DIA
H	3.81	0.15
I	50.80	2.00
J	17.02 MAX	0.67 MAX
K	1.57	0.062
M	20.60	0.812
N	3.18	0.125

GPZ1275 PACKAGE OUTLINE



GPZ1275



DIMENSIONS

DIM	MILLIMETERS	INCHES
A	51.12 TYP	2.04 TYP
B	44.45 TYP	1.75 TYP
C	3.68 TYP	0.145 TYP
D	30.48 TYP	1.20 TYP
E	38.10 TYP	1.50 TYP
F	3.56 DIA	0.14 DIA
G	5.97 DIA	0.235 DIA
H	5.97	0.235
I	64.52	2.54
J	17.02 MAX	0.670 MAX
K	1.57	0.062
M	20.62	0.812
N	3.18	0.125
P	3.68	0.150

Outline & Dimensions: Rev 0 - 4/02, 06034

COPYRIGHT © ProTek Devices 2007

SPECIFICATIONS: ProTek reserves the right to change the electrical and or mechanical characteristics described herein without notice (except JEDEC).

DESIGN CHANGES: ProTek reserves the right to discontinue product lines without notice, and that the final judgement concerning selection and specifications is the buyer's and that in furnishing engineering and technical assistance, ProTek assumes no responsibility with respect to the selection or specifications of such products.

ProTek Devices

2929 South Fair Lane, Tempe, AZ 85282

Tel: 602-431-8101 Fax: 602-431-2288

E-Mail: sales@protekdevices.com

Web Site: www.protekdevices.com