

Features

- Frequency Range: LO & RF 10 – 1500 MHz, IF DC – 1000 MHz
- L.O. Drive : +7 dBm
- Industry Standard SMT package
- Available in Tape-and -Reel
- Low Cost

Description

The MXB-1501-7 is a medium-low drive level, surface mount mixer designed for applications that require small, low cost and highly reliable surface mount components. This mixer is a double-balanced design for wideband high dynamic range use in communications up and down-converter applications.

SURFACE MOUNT MIXER



Specifications

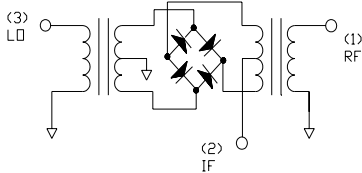
Parameter	Min	Typ	Max	Min	Typ	Max
Frequency Range (MHz)	10		1000	1000		1500
Conversion Loss (dB)		6.5	7.5		8.5	9.0
LO – RF Isolation (dB)	20	30		20	24	
LO – IF Isolation (dB)	18	32		12	17	
IIP ₃ (dBm)		+13			+13	

Absolute Maximum Ratings

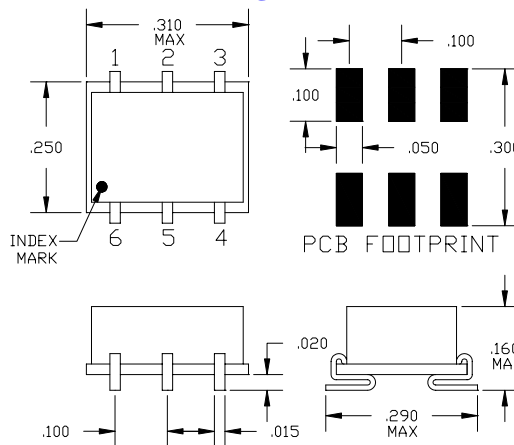
Parameter	Maximum
RF Power	+ 13 dBm
Operating Temperature	-50 to +80 °C
Storage Temperature	-65 to +100 °C
Re-flow Temperature	+ 240 °C

Notes: Test Conditions-LO +7 dBm, RF -10 dBm, IF 30 MHz
Typical values represent Mid-band performance @ 25° C.

Schematic



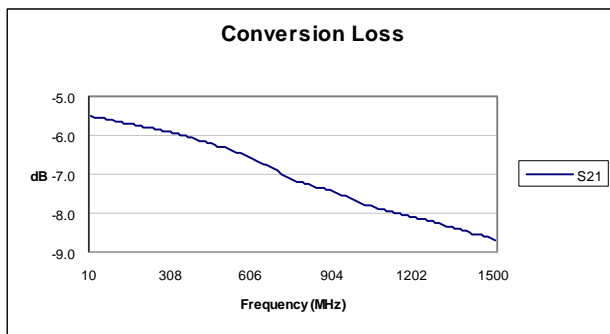
Package – S07



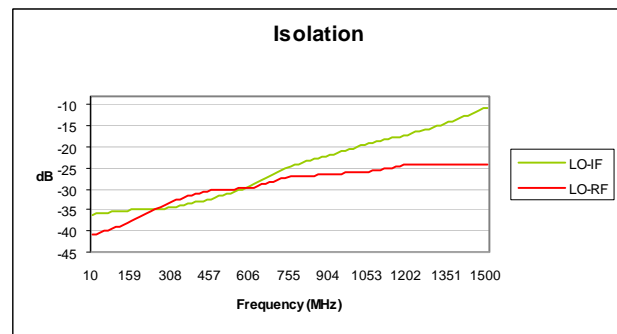
Pin Functions

Function	Pin
LO INPUT	1
RF INPUT	4
IF OUTPUT	5
GROUND	2,3,6

Typical Test Data – Conversion Loss



Typical Test Data – LO-RF and LO-IF Isolation



Specifications and information on this data sheet are subject to change without notice.