

MAC997 Series

Preferred Device

Sensitive Gate Triacs

Silicon Bidirectional Thyristors

Designed for use in solid state relays, MPU interface, TTL logic and any other light industrial or consumer application. Supplied in an inexpensive TO-92 package which is readily adaptable for use in automatic insertion equipment.

- One-Piece, Injection-Molded Package
- Blocking Voltage to 600 Volts
- Sensitive Gate Triggering in Four Trigger Modes (Quadrants) for all possible Combinations of Trigger Sources, and especially for Circuits that Source Gate Drives
- All Diffused and Glassivated Junctions for Maximum Uniformity of Parameters and Reliability
- Improved Noise Immunity (dv/dt Minimum of 20 V/μsec at 110°C)
- Commutating di/dt of 1.6 Amps/msec at 110°C
- High Surge Current of 8 Amps
- Device Marking: Logo, Device Type, e.g., MAC997A6, Date Code

MAXIMUM RATINGS (T_J = 25°C unless otherwise noted)

| Rating | Symbol | Value | Unit |
|--|--|----------------|------------------|
| Peak Repetitive Off-State Voltage (T _J = -40 to +110°C)(1) Sine Wave 50 to 60 Hz, Gate Open MAC997A6,B6 MAC997A8,B8 | V _{DRM} , V _{RRM} | 400 600 | Volts |
| On-State RMS Current Full Cycle Sine Wave 50 to 60 Hz (T _C = +50°C) | I _{T(RMS)} | 0.8 | Amp |
| Peak Non-Repetitive Surge Current One Full Cycle, Sine Wave 60 Hz (T _C = 110°C) | I _{TSM} | 8.0 | Amps |
| Circuit Fusing Considerations (t = 8.3 ms) | I ² t | .26 | A ² s |
| Peak Gate Voltage (t ≤ 2.0 μs, T _C = +80°C) | V _{GM} | 5.0 | Volts |
| Peak Gate Power (t ≤ 2.0 μs, T _C = +80°C) | P _{GM} | 5.0 | Watts |
| Average Gate Power (T _C = 80°C, t ≤ 8.3 ms) | P _{G(AV)} | 0.1 | Watt |
| Peak Gate Current (t ≤ 2.0 μs, T _C = +80°C) | I _{GM} | 1.0 | Amp |
| Operating Junction Temperature Range | T _J | -40 to +110 | °C |
| Storage Temperature Range | T _{stg} | -40 to +150 | °C |

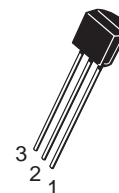
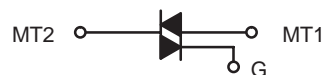
(1) V_{DRM} and V_{RRM} for all types can be applied on a continuous basis. Blocking voltages shall not be tested with a constant current source such that the voltage ratings of the devices are exceeded.



ON Semiconductor

<http://onsemi.com>

TRIACS
0.8 AMPERE RMS
400 thru 600 VOLTS



TO-92 (TO-226AA)
CASE 029
STYLE 12

| PIN ASSIGNMENT | |
|----------------|-----------------|
| 1 | Main Terminal 1 |
| 2 | Gate |
| 3 | Main Terminal 2 |

ORDERING INFORMATION

See detailed ordering and shipping information in the package dimensions section on page 8 of this data sheet.

Preferred devices are recommended choices for future use and best overall value.

MAC997 Series

THERMAL CHARACTERISTICS

| Characteristic | Symbol | Max | Unit |
|--|-----------------|-----|------|
| Thermal Resistance, Junction to Case | $R_{\theta JC}$ | 75 | °C/W |
| Thermal Resistance, Junction to Ambient | $R_{\theta JA}$ | 200 | °C/W |
| Maximum Lead Temperature for Soldering Purposes for 10 Seconds | T_L | 260 | °C |

ELECTRICAL CHARACTERISTICS ($T_C = 25^\circ\text{C}$ unless otherwise noted; Electricals apply in both directions)

| Characteristic | Symbol | Min | Typ | Max | Unit |
|----------------|--------|-----|-----|-----|------|
|----------------|--------|-----|-----|-----|------|

OFF CHARACTERISTICS

| | | | | | |
|---|--------------------|---|---|-----|---------------|
| Peak Repetitive Blocking Current ($V_D = \text{Rated } V_{DRM}, V_{RRM}$; Gate Open) | I_{DRM}, I_{RRM} | — | — | 10 | μA |
| $T_J = 25^\circ\text{C}$ $T_J = +110^\circ\text{C}$ | | — | — | 100 | μA |

ON CHARACTERISTICS

| | | | | | |
|---|----------|--|--|--|---------------|
| Peak On-State Voltage ($I_{TM} = \pm .85 \text{ A Peak}$; Pulse Width $\leq 2.0 \text{ ms}$, Duty Cycle $\leq 2.0\%$) | V_{TM} | — | — | 1.9 | Volts |
| Gate Trigger Current (Continuous dc) ($V_D = 12 \text{ Vdc}$, $R_L = 100 \text{ Ohms}$) MT2(+), G(+) MAC997A6,A8 MT2(+), G(–) MT2(–), G(–) MT2(–), G(+) MT2(+), G(+) MAC997B6,B8 MT2(+), G(–) MT2(–), G(–) MT2(–), G(+) | I_{GT} | — — — — — — — — | — — — — — — — — | 5.0 5.0 5.0 7.0 3.0 3.0 3.0 5.0 | mA |
| Latching Current ($V_D = 12 \text{ V}$, $I_G = 10 \text{ mA}$) MT2(+), G(+) All Types MT2(+), G(–) All Types MT2(–), G(–) All Types MT2(–), G(+) All Types | I_L | — — — — | 1.6 10.5 1.5 2.5 | 15 20 15 15 | mA |
| Gate Trigger Voltage (Continuous dc) ($V_D = 12 \text{ Vdc}$, $R_L = 100 \text{ Ohms}$) MT2(+), G(+) All Types MT2(+), G(–) All Types MT2(–), G(–) All Types MT2(–), G(+) All Types | V_{GT} | — — — — | .66 .77 .84 .88 | 2.0 2.0 2.0 2.5 | Volts |
| Gate Non-Trigger Voltage ($V_D = 12 \text{ V}$, $R_L = 100 \text{ Ohms}$, $T_J = 110^\circ\text{C}$) All Four Quadrants | V_{GD} | 0.1 | — | — | Volts |
| Holding Current ($V_D = 12 \text{ Vdc}$, Initiating Current = 200 mA, Gate Open) | I_H | — | 1.5 | 10 | mA |
| Turn-On Time ($V_D = \text{Rated } V_{DRM}$, $I_{TM} = 1.0 \text{ A pk}$, $I_G = 25 \text{ mA}$) | t_{gt} | — | 2.0 | — | μs |

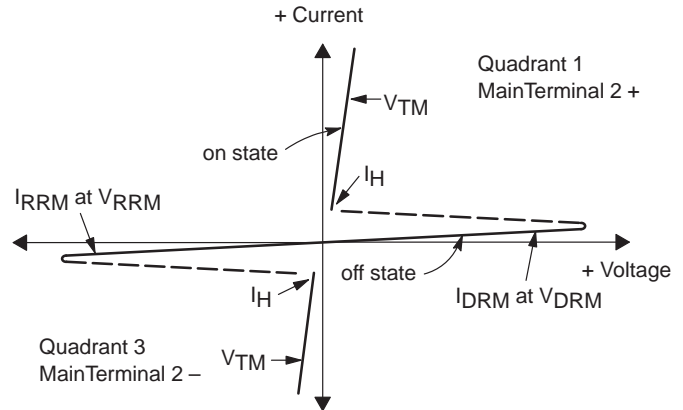
DYNAMIC CHARACTERISTICS

| | | | | | |
|--|------------|-----|----|----|------------------|
| Rate of Change of Commutating Current ($V_D = 400 \text{ V}$, $I_{TM} = .84 \text{ A}$, Commutating $dv/dt = 1.5 \text{ V}/\mu\text{s}$, Gate Open, $T_J = 110^\circ\text{C}$, $f = 250 \text{ Hz}$, with Snubber) | $di/dt(c)$ | 1.6 | — | — | A/ms |
| Critical Rate of Rise of Off-State Voltage ($V_D = \text{Rated } V_{DRM}$, Exponential Waveform, Gate Open, $T_J = 110^\circ\text{C}$) | dv/dt | 20 | 60 | — | V/ μs |
| Repetitive Critical Rate of Rise of On-State Current Pulse Width = 20 μs , $IPK_{max} = 15 \text{ A}$, $diG/dt = 1 \text{ A}/\mu\text{s}$, $f = 60 \text{ Hz}$ | di/dt | — | — | 10 | A/ μs |

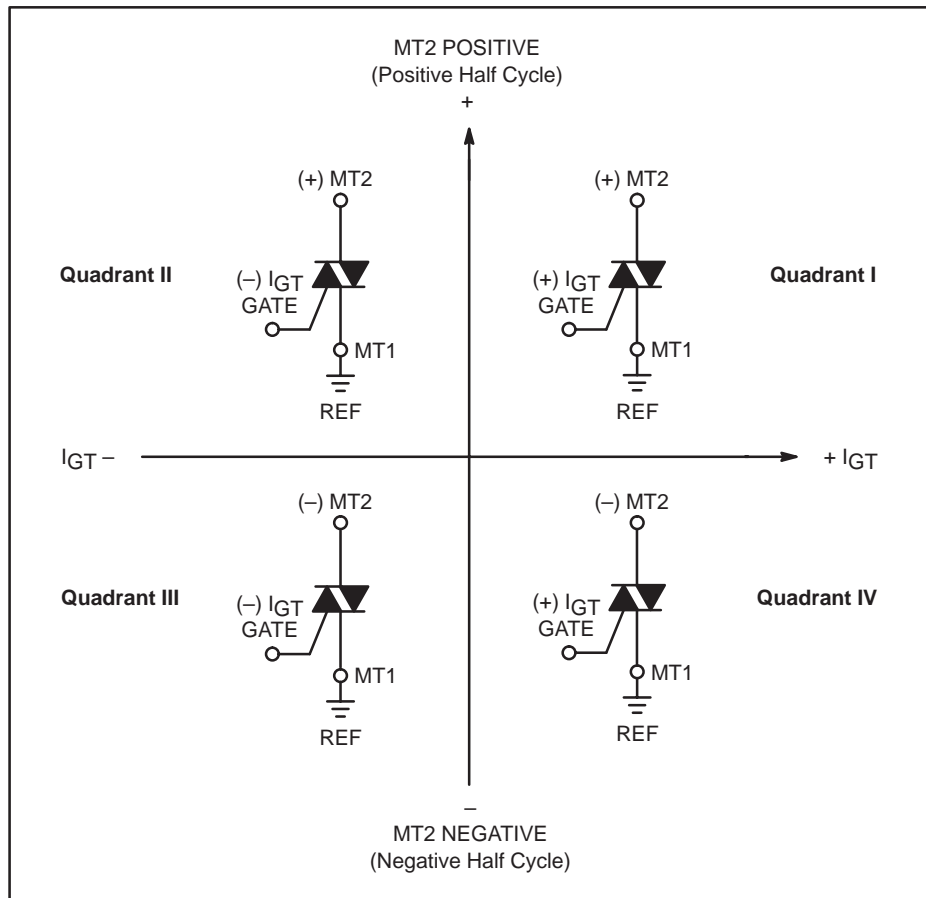
MAC997 Series

Voltage Current Characteristic of Triacs (Bidirectional Device)

| Symbol | Parameter |
|-----------|---|
| V_{DRM} | Peak Repetitive Forward Off State Voltage |
| I_{DRM} | Peak Forward Blocking Current |
| V_{RRM} | Peak Repetitive Reverse Off State Voltage |
| I_{RRM} | Peak Reverse Blocking Current |
| V_{TM} | Maximum On State Voltage |
| I_H | Holding Current |



Quadrant Definitions for a Triac



All polarities are referenced to MT1.

With in-phase signals (using standard AC lines) quadrants I and III are used.

MAC997 Series

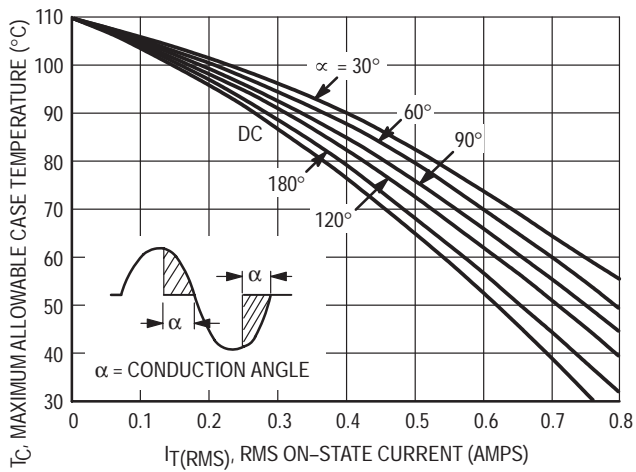


Figure 1. RMS Current Derating

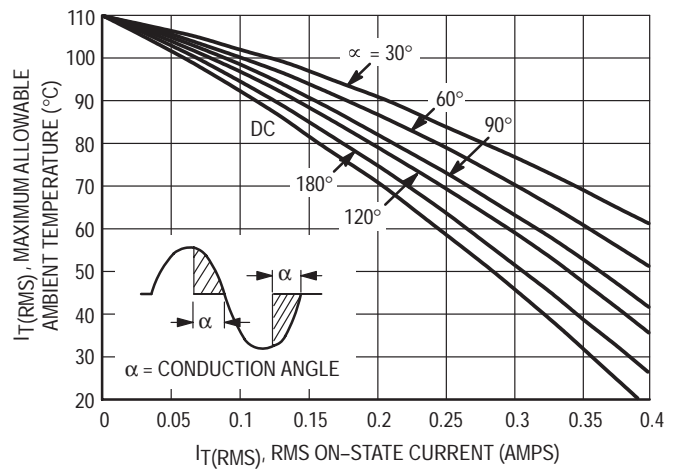


Figure 2. RMS Current Derating

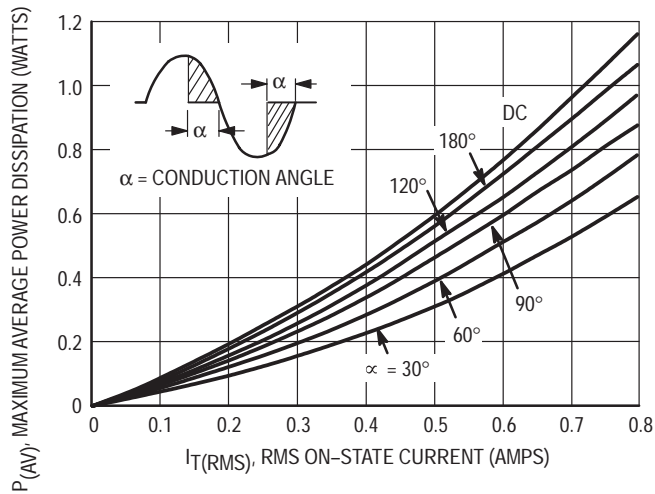


Figure 3. Power Dissipation

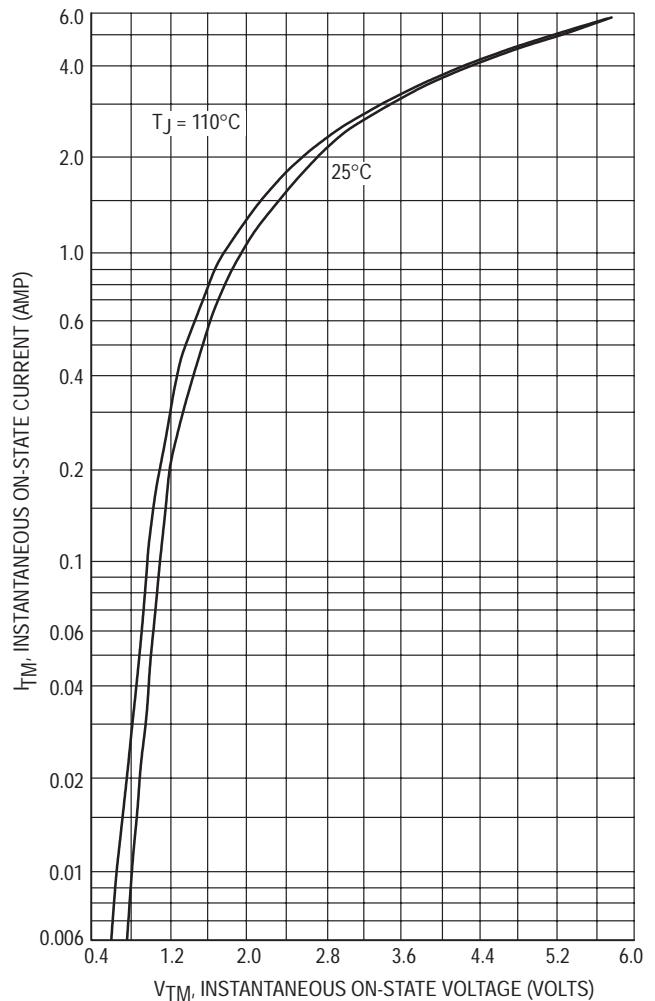


Figure 4. On-State Characteristics

MAC997 Series

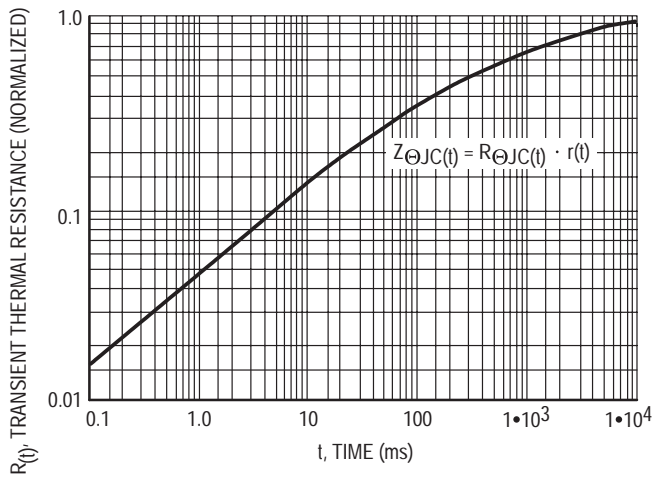


Figure 5. Transient Thermal Response

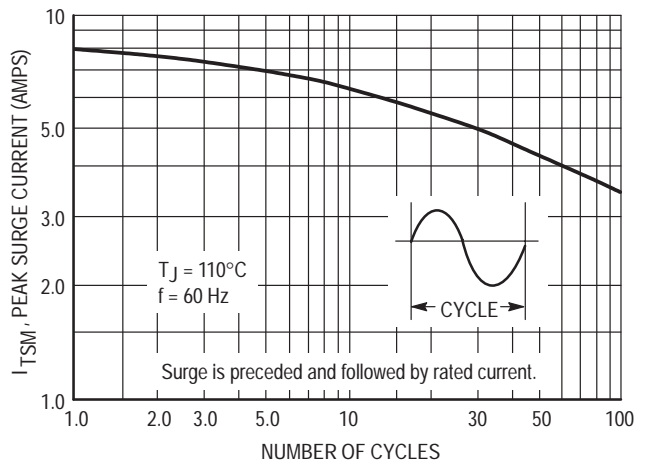


Figure 6. Maximum Allowable Surge Current

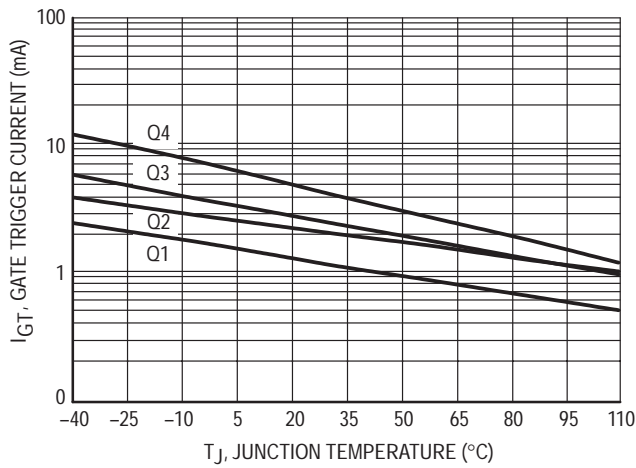


Figure 7. Typical Gate Trigger Current versus Junction Temperature

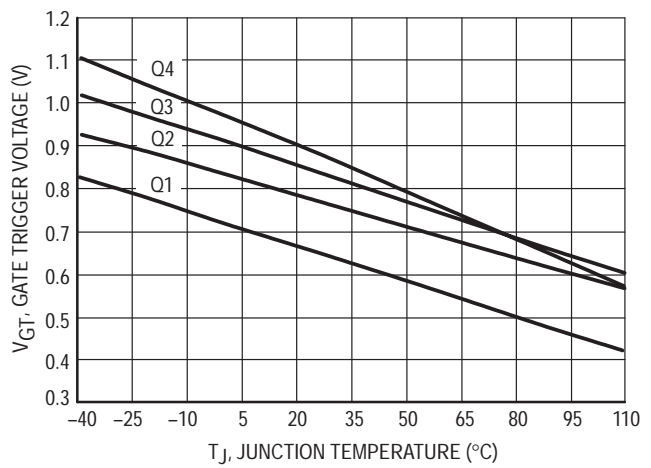


Figure 8. Typical Gate Trigger Voltage versus Junction Temperature

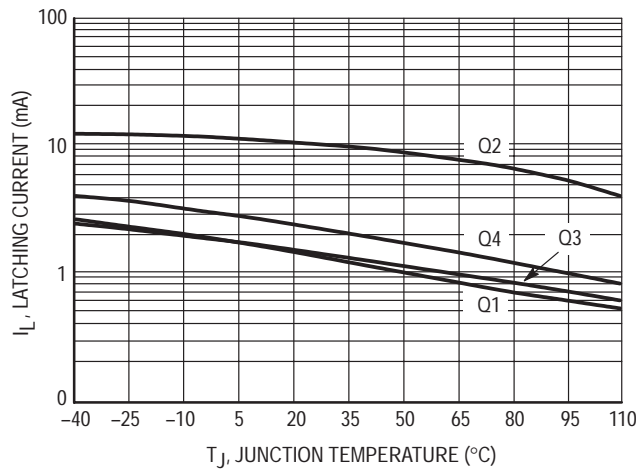


Figure 9. Typical Latching Current versus Junction Temperature

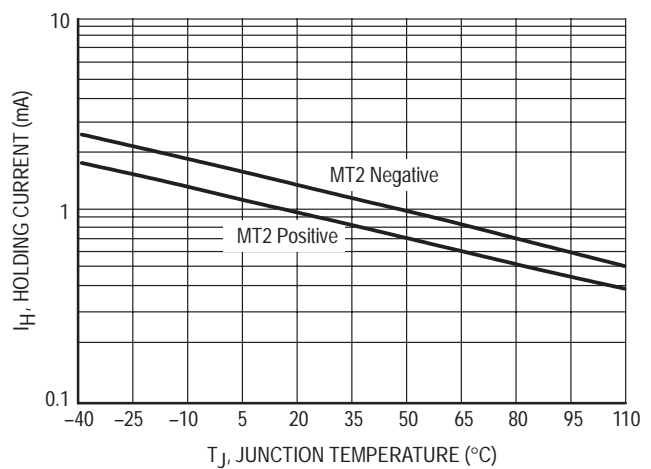
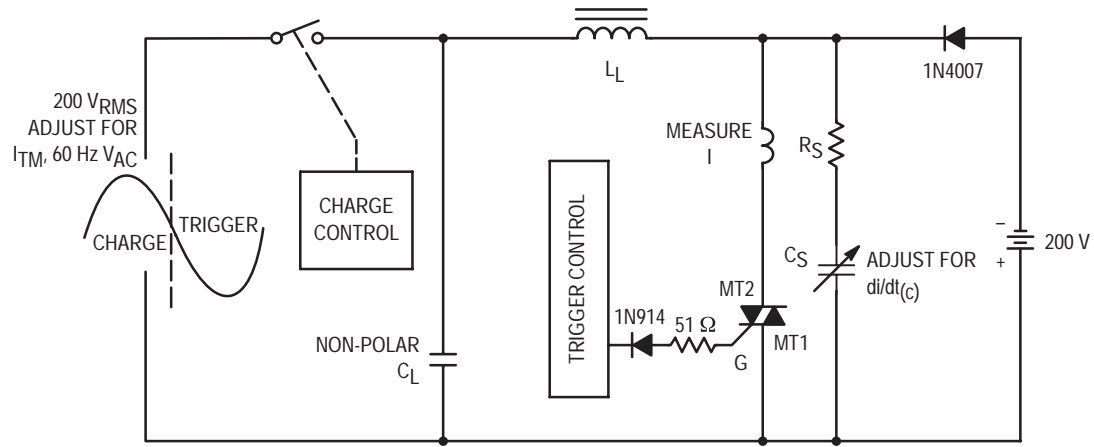


Figure 10. Typical Holding Current versus Junction Temperature

MAC997 Series



Note: Component values are for verification of rated $(di/dt)_c$. See AN1048 for additional information.

Figure 11. Simplified Test Circuit to Measure the Critical Rate of Rise of Commutating Current $(di/dt)_c$

MAC997 Series

TO-92 EIA RADIAL TAPE IN FAN FOLD BOX OR ON REEL

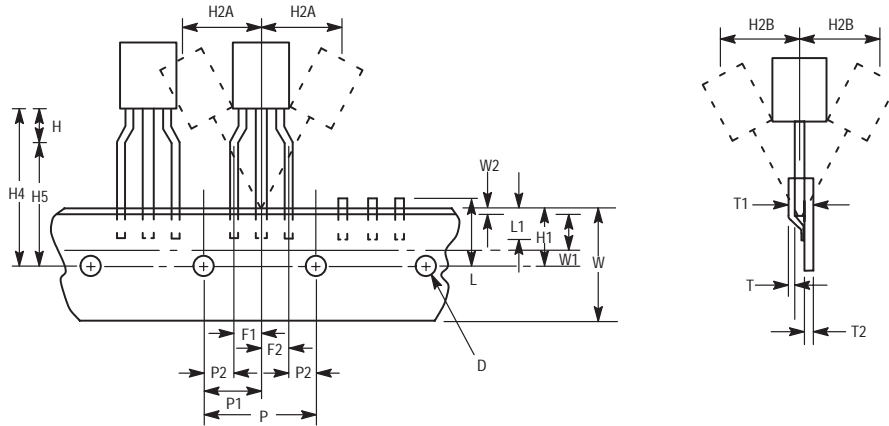


Figure 12. Device Positioning on Tape

| Symbol | Item | Specification | | | |
|--------|--------------------------------------|---------------|---------|------------|------|
| | | Inches | | Millimeter | |
| | | Min | Max | Min | Max |
| D | Tape Feedhole Diameter | 0.1496 | 0.1653 | 3.8 | 4.2 |
| D2 | Component Lead Thickness Dimension | 0.015 | 0.020 | 0.38 | 0.51 |
| F1, F2 | Component Lead Pitch | 0.0945 | 0.110 | 2.4 | 2.8 |
| H | Bottom of Component to Seating Plane | .059 | .156 | 1.5 | 4.0 |
| H1 | Feedhole Location | 0.3346 | 0.3741 | 8.5 | 9.5 |
| H2A | Deflection Left or Right | 0 | 0.039 | 0 | 1.0 |
| H2B | Deflection Front or Rear | 0 | 0.051 | 0 | 1.0 |
| H4 | Feedhole to Bottom of Component | 0.7086 | 0.768 | 18 | 19.5 |
| H5 | Feedhole to Seating Plane | 0.610 | 0.649 | 15.5 | 16.5 |
| L | Defective Unit Clipped Dimension | 0.3346 | 0.433 | 8.5 | 11 |
| L1 | Lead Wire Enclosure | 0.09842 | — | 2.5 | — |
| P | Feedhole Pitch | 0.4921 | 0.5079 | 12.5 | 12.9 |
| P1 | Feedhole Center to Center Lead | 0.2342 | 0.2658 | 5.95 | 6.75 |
| P2 | First Lead Spacing Dimension | 0.1397 | 0.1556 | 3.55 | 3.95 |
| T | Adhesive Tape Thickness | 0.06 | 0.08 | 0.15 | 0.20 |
| T1 | Overall Taped Package Thickness | — | 0.0567 | — | 1.44 |
| T2 | Carrier Strip Thickness | 0.014 | 0.027 | 0.35 | 0.65 |
| W | Carrier Strip Width | 0.6889 | 0.7481 | 17.5 | 19 |
| W1 | Adhesive Tape Width | 0.2165 | 0.2841 | 5.5 | 6.3 |
| W2 | Adhesive Tape Position | .0059 | 0.01968 | .15 | 0.5 |

NOTES:

1. Maximum alignment deviation between leads not to be greater than 0.2 mm.
2. Defective components shall be clipped from the carrier tape such that the remaining protrusion (L) does not exceed a maximum of 11 mm.
3. Component lead to tape adhesion must meet the pull test requirements.
4. Maximum non-cumulative variation between tape feed holes shall not exceed 1 mm in 20 pitches.
5. Holddown tape not to extend beyond the edge(s) of carrier tape and there shall be no exposure of adhesive.
6. No more than 1 consecutive missing component is permitted.
7. A tape trailer and leader, having at least three feed holes is required before the first and after the last component.
8. Splices will not interfere with the sprocket feed holes.

MAC997 Series

ORDERING & SHIPPING INFORMATION: MAC97 Series packaging options, Device Suffix

| U.S. | Europe Equivalent | Shipping | Description of TO92 Tape Orientation |
|--|--|--|---|
| | MAC997A6RL1, A8RL1 MAC997B6RL1, B8RL1 | Radial Tape and Reel (2K/Reel) | Flat side of TO92 and adhesive tape visible |
| MAC997A6,A8 MAC997B6,B8 | | Bulk in Box (5K/Box) | N/A, Bulk |
| MAC997A6RLRP, A8RLRP MAC997B6RLRP, B8RLRP | | Radial Tape and Fan Fold Box (2K/Box) | Round side of TO92 and adhesive tape visible |

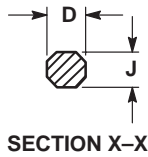
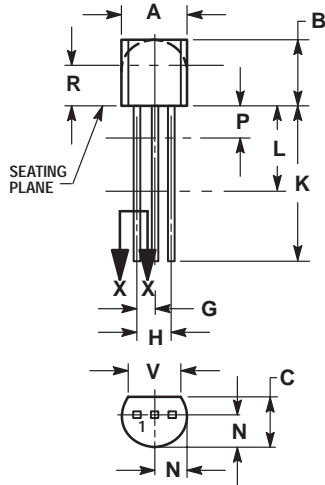
MAC997 Series

PACKAGE DIMENSIONS

TO-92 (TO-226AA)

CASE 029-11

ISSUE AJ



NOTES:

1. DIMENSIONING AND TOLERANCING PER ANSI Y14.5M, 1982.
2. CONTROLLING DIMENSION: INCH.
3. CONTOUR OF PACKAGE BEYOND DIMENSION R IS UNCONTROLLED.
4. LEAD DIMENSION IS UNCONTROLLED IN P AND BEYOND DIMENSION K MINIMUM.

| DIM | INCHES | | MILLIMETERS | |
|-----|--------|-------|-------------|-------|
| | MIN | MAX | MIN | MAX |
| A | 0.175 | 0.205 | 4.45 | 5.20 |
| B | 0.170 | 0.210 | 4.32 | 5.33 |
| C | 0.125 | 0.165 | 3.18 | 4.19 |
| D | 0.016 | 0.021 | 0.407 | 0.533 |
| G | 0.045 | 0.055 | 1.15 | 1.39 |
| H | 0.095 | 0.105 | 2.42 | 2.66 |
| J | 0.015 | 0.020 | 0.39 | 0.50 |
| K | 0.500 | --- | 12.70 | --- |
| L | 0.250 | --- | 6.35 | --- |
| N | 0.080 | 0.105 | 2.04 | 2.66 |
| P | --- | 0.100 | --- | 2.54 |
| R | 0.115 | --- | 2.93 | --- |
| V | 0.135 | --- | 3.43 | --- |


STYLE 12:

- PIN 1. MAIN TERMINAL 1
- GATE
- MAIN TERMINAL 2

Notes

Notes

MAC997 Series

ON Semiconductor and  are trademarks of Semiconductor Components Industries, LLC (SCILLC). SCILLC reserves the right to make changes without further notice to any products herein. SCILLC makes no warranty, representation or guarantee regarding the suitability of its products for any particular purpose, nor does SCILLC assume any liability arising out of the application or use of any product or circuit, and specifically disclaims any and all liability, including without limitation special, consequential or incidental damages. "Typical" parameters which may be provided in SCILLC data sheets and/or specifications can and do vary in different applications and actual performance may vary over time. All operating parameters, including "Typicals" must be validated for each customer application by customer's technical experts. SCILLC does not convey any license under its patent rights nor the rights of others. SCILLC products are not designed, intended, or authorized for use as components in systems intended for surgical implant into the body, or other applications intended to support or sustain life, or for any other application in which the failure of the SCILLC product could create a situation where personal injury or death may occur. Should Buyer purchase or use SCILLC products for any such unintended or unauthorized application, Buyer shall indemnify and hold SCILLC and its officers, employees, subsidiaries, affiliates, and distributors harmless against all claims, costs, damages, and expenses, and reasonable attorney fees arising out of, directly or indirectly, any claim of personal injury or death associated with such unintended or unauthorized use, even if such claim alleges that SCILLC was negligent regarding the design or manufacture of the part. SCILLC is an Equal Opportunity/Affirmative Action Employer.

PUBLICATION ORDERING INFORMATION

NORTH AMERICA Literature Fulfillment:

Literature Distribution Center for ON Semiconductor
P.O. Box 5163, Denver, Colorado 80217 USA
Phone: 303-675-2175 or 800-344-3860 Toll Free USA/Canada
Fax: 303-675-2176 or 800-344-3867 Toll Free USA/Canada
Email: ONlit@hibbertco.com
Fax Response Line: 303-675-2167 or 800-344-3810 Toll Free USA/Canada

N. American Technical Support: 800-282-9855 Toll Free USA/Canada

EUROPE: LDC for ON Semiconductor – European Support

German Phone: (+1) 303-308-7140 (M–F 1:00pm to 5:00pm Munich Time)
Email: ONlit-german@hibbertco.com
French Phone: (+1) 303-308-7141 (M–F 1:00pm to 5:00pm Toulouse Time)
Email: ONlit-french@hibbertco.com
English Phone: (+1) 303-308-7142 (M–F 12:00pm to 5:00pm UK Time)
Email: ONlit@hibbertco.com

EUROPEAN TOLL-FREE ACCESS*: 00-800-4422-3781

*Available from Germany, France, Italy, England, Ireland

CENTRAL/SOUTH AMERICA:

Spanish Phone: 303-308-7143 (Mon–Fri 8:00am to 5:00pm MST)
Email: ONlit-spanish@hibbertco.com

ASIA/PACIFIC: LDC for ON Semiconductor – Asia Support

Phone: 303-675-2121 (Tue–Fri 9:00am to 1:00pm, Hong Kong Time)
Toll Free from Hong Kong & Singapore:
001-800-4422-3781
Email: ONlit-asia@hibbertco.com

JAPAN: ON Semiconductor, Japan Customer Focus Center
4-32-1 Nishi-Gotanda, Shinagawa-ku, Tokyo, Japan 141-8549
Phone: 81-3-5740-2745

Email: r14525@onsemi.com

ON Semiconductor Website: <http://onsemi.com>

For additional information, please contact your local Sales Representative.