

TIANMA MICROELECTRONICS

21138 Commerce Pointe Drive, Walnut, CA 91789 USA

TEL: 909-468-2839 FAX: 909-468-0868

Type: DGL-0201W-7A Release No.: 00

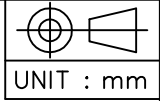
TM202JFFW7/B-2 A Drawing No.:

DATE: 2004 02 12

PAGE: 1 of 3

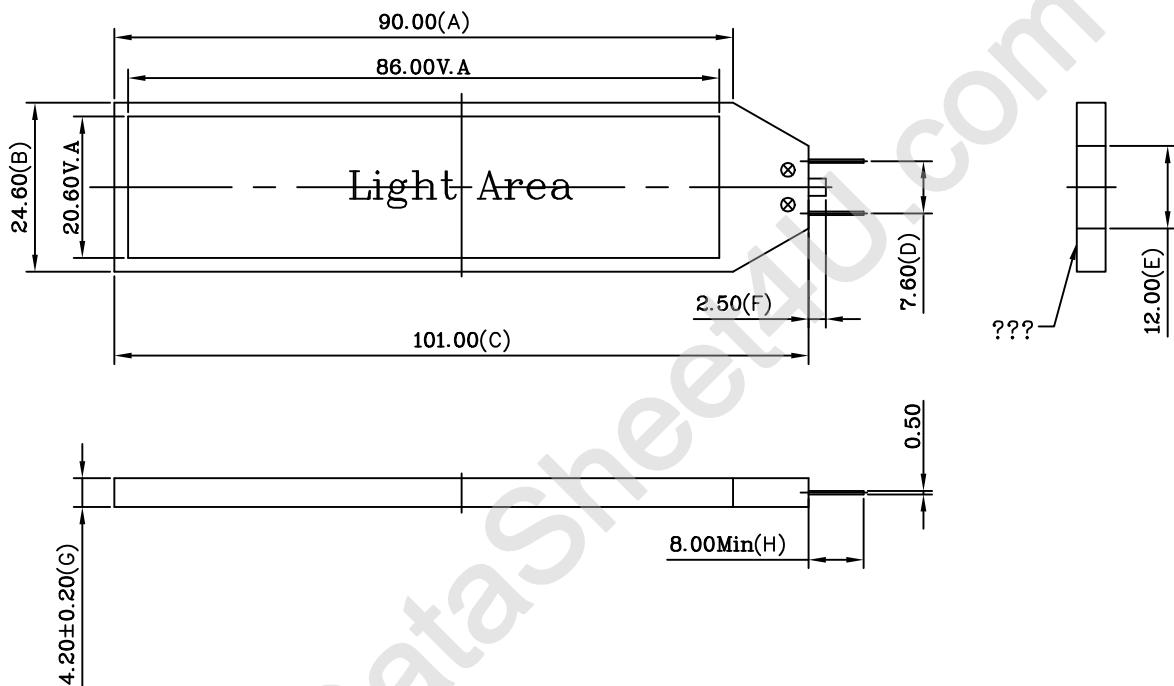
1.???? MECHANICAL OUTLINE COLOR : WHITE

(?????? Unspecified Tolerances is: .x ± 0.30) ?? : ??

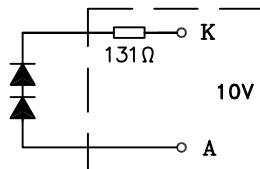


UNIT : mm

液晶之友 电话: 020-33819057
Http://www.lcdfriends.com



2.??? CIRCUIT DIAGRAM (LED 2*1=2 dies)



?? ISSUE	???? LOT NO.	?? ? ? AMENDMENT	?? SIGNATURE	?? DATE	?? ISSUE	???? LOT NO.	?? ? ? AMENDMENT	?? SIGNATURE	?? DATE
?? DESIGN	WANG.G			?? KNOW-NOW	?? CHECKED	?? APPROVED			

TIANMA MICROELECTRONICS

21138 Commerce Pointe Drive, Walnut, CA 91789 USA

TEL: 909-468-2839 FAX: 909-468-0868

Type: DGL-0201W-7A

Release No.: 00

DATE: 2004 02 12

TM202JFFW7/B-2 A

Drawing No.:

PAGE: 2 of 3

3.??????? STORAGE & SOLDERING CONDITIONS

?Store with care. Storing the unite in bad condition will cause the reflector sheet and decrease it's adhesive power. Storage The products under condition: temperature ($25^{\circ}\text{C}\pm 10^{\circ}\text{C}$) and humidity ($65\%\text{RH}\pm 20\%\text{RH}$) our recommendation.

?The soldering temperature is $260\pm 5^{\circ}\text{C}$ and soldering Time should be less than 3 sec, and soldering power should be less than 30W.

?The soldering point should for way more 1.6mm from body.

4.???? ABSOLUTE MAXIMUM RATINGS

(Ta=25°C . Unless otherwise specified, The Ambient temperature Ta=25°C)

Item	Symbol	Conditions	Rating	Unit
* Absolute maximum forward current	IFm		30	mA
* Peak forward current	IFp	1 msec 1/10 Duty Cycle	45	mA
Reverse Voltage	Vr		10	V
* Power dissipation	Pd		0.32	W
Operating Temperature Range	Topr		-20~+70	°C
Storage Temperature Range	Tstg		-30~+80	°C

* 25°C , Ifm?Ifp?Pd -0.36mA/°C -0.54mA/°C
-2.54 mW/°C Ifm?Ifp?60%

5.????? ELECTRICAL – OPTICAL CHARACTERISTICS

(Ta=25°C . Unless otherwise specified, The Ambient temperature Ta=25°C)

Item	Symbol	Symbol	Symbol	Symbol	Unit	Condition
Forward Voltage	Vf	--	7.0	7.3	V If=	25 mA
Reverse Current	Ir	--	0.1	--	mA Vr=	7.0 V
Peak wave length	λP	--	WHITE	--	nm If=	25 mA
Spectral Line Half width	$\Delta\lambda$	--	--	--	nm If=	25 mA
* Luminance	Lv	--	120	--	cd/m ² If=	25 mA
Color Chromaticity	X				If=	mA
	Y					

* 3 75% BM-7 Field= ABS 1.0
The luminance is the average value 3f point, and The Lvmin./Lvmax. is above 75%
The measurement instrument is BM-7 luminance Colorimeter. The 1.0 field = ABS.

TIANMA MICROELECTRONICS

21138 Commerce Pointe Drive, Walnut, CA 91789 USA

TEL: 909-468-2839

FAX: 909-468-0868

Type: DGL-0201W-7A

Release No.: 00

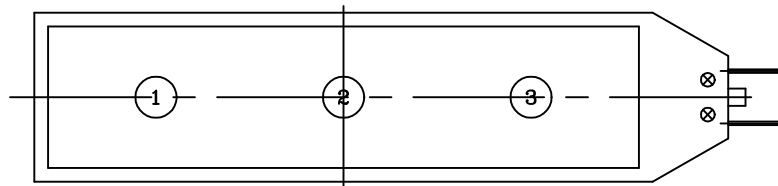
DATE: 2004 02 12

TM202JFFW7/B-2 A

Drawing No.:

PAGE: 3 of 3

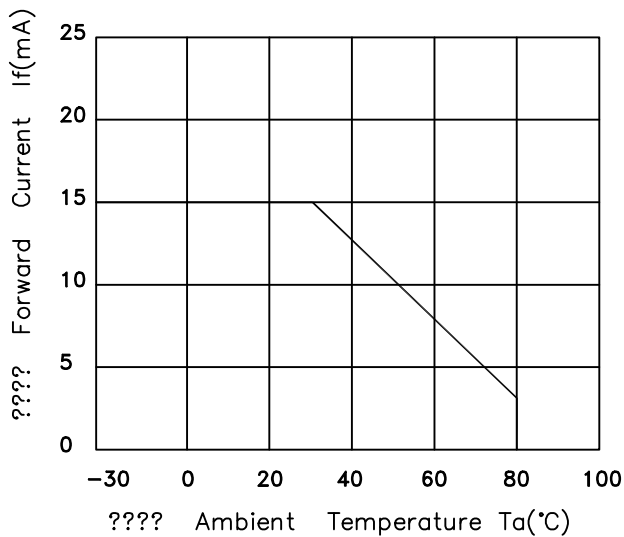
6.?????? LUMINANCE INSPECTION LOCATION



7.LED ELECTRICAL CHARACTERISTICS

(1) ??LED????? - ????

A LED Forward current VS.
- Ambient Temperature



(2) ??? - ?????

A LED Forward current VS.
- Forward Voltage

