

PAW587

40-550 MHz.

tyco

Electronics

21 dB.

CATV Ultra-linear Amplifier

M/A-COM



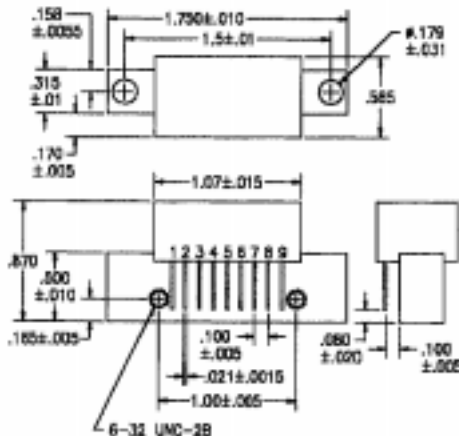
Features: (typical values)

- Ultra High Linearity
- Low Noise Figure
- Rugged Construction
- Operation over a wide voltage range
- Usable for 50 ohm operation

Specifications @Tcase = 30°C (Referenced to 75 ohms)

Parameter	Typical Conditions	Min. Value	Max. Value	Units
Frequency Range		40	550	MHz.
Power Gain Rugged Construction	f=50 MHz.	21	22	dB.
Cable Equivalent slope	f=40 MHz. to 750 MHz.	0	1.2	dB.
Gain Flatness (peak to valley)	f=40 to 550 MHz.	-	+/- 0.4	dB.
Input/Output Return Loss	f=40 to 550 MHz.	-	16	dB.
Composite Triple Beat (CTB)	77 channels flat Vo=44dBmV. measured @ channel 78	-	-57	dB.
Cross Modulation (XMOD)	77 channels flat Vo=44dBmV. measured @ channel 2	-	-57	dB.
Composite 2nd. Order	77 channels flat Vo=44dBmV. measured @ channel 78	-	-55	dB.
IP3 / IP2	2 tone	40/56	-	dBm.
Noise Figure	@ f= 550 MHz.	-	7.0	dB.
Total Current	@ Voltage of +24v.	-	340	mA.

Outline Drawings



Maximum Ratings

- Storage Temperature ..... -40°C to +100°C
- DC Voltage ..... +28 volts
- RF Input voltage ..... 60dBmV.
- Operating Base Temperature ..... +100°C

Pin Configuration

Pin #	Description
1	Input
2,3,7,8	Ground
5	+V
4,6	not used