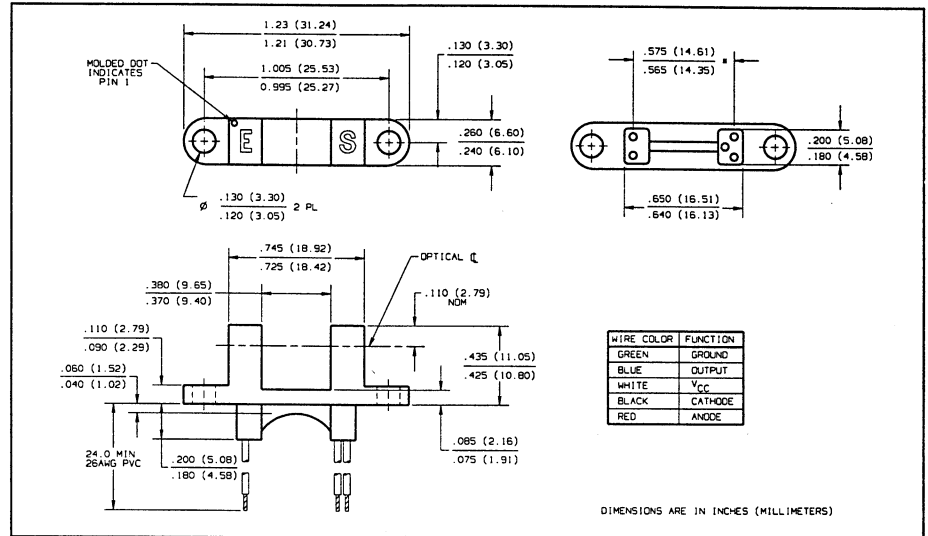
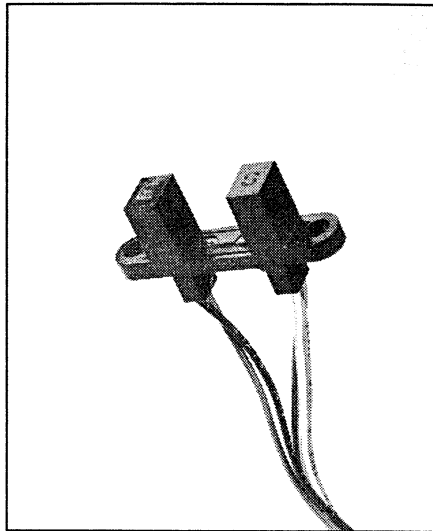


Photologic® Slotted Optical Switches

Types OPB900W, OPB910W “Wide Gap” Series



Features

- 0.375" (9.53 mm) wide gap
- Choice of aperture
- Choice of output configuration
- Choice of opaque or IR transmissive shell material
- Data rates to 250 kBaud
- 24" min, 26AWG wire leads

Description

The OPB900W and OPB910W series of Photologic® Photo Integrated Circuit Switches provide optimum flexibility for the design engineer. Building from a standard housing with a 0.375" (9.53 mm) wide slot, the user can specify (1) type and polarity of TTL output and (2) discrete shell material.

The electrical output can be specified as either TTL totem pole or TTL open collector. Either may be supplied with inverter or buffer output polarity. All have added stability of a built-in hysteresis amplifier.

Absolute Maximum Ratings (T_A = 25° C unless otherwise noted)

| | |
|--|-----------------------|
| Supply Voltage, V _{CC} (Not to exceed 3 sec.) | 10 V |
| Storage Temperature Range | -40° C to +80° C |
| Operating Temperature Range | -40° C to +70° C |
| Input Diode Power Dissipation | 100 mW ⁽¹⁾ |
| Output Photologic® Power Dissipation | 200 mW ⁽²⁾ |
| Total Device Power Dissipation | 300 mW ⁽³⁾ |
| Voltage at Output Lead (Open Collector Output) | 35 V |
| Diode Forward D.C. Current | 40 mA |
| Diode Reverse D.C. Voltage | 2 V |

Notes:

- (1) Derate linearly 2.22 mW/° C above 25° C.
- (2) Derate linearly 4.44 mW/° C above 25° C.
- (3) Derate linearly 6.66 mW/° C above 25° C.
- (4) The OPB900W/OPB910W series are terminated with 24 inches of 7 strand 26 AWG, UL 1429 insulated wire on each terminal. Insulation function and colors are :

| | |
|----------------------|-------------------------|
| Red - IRED Anode | White - V _{CC} |
| Black - IRED Cathode | Blue - Output |
| | Green - Ground |

Other wire lengths and/or colors in addition to customer selected connectors are available. Contact your local representative or call the factory.

- (5) Normal application would be with light source blocked, simulated by I_F = 0 mA.
- (6) All parameters tested using pulse technique.
- (7) Methanol and isopropanol are recommended as cleaning agents. Housings are soluble in chlorinated hydrocarbons and ketones.



For RoHS compliant devices add "Z" to the end of the part number: OPB900W55Z

Types OPB900W, OPB910W Series

Electrical Characteristics ($T_A = -40^\circ\text{C}$ to $+70^\circ\text{C}$ unless otherwise noted)

| SYMBOL | PARAMETER | MIN | TYP | MAX | UNITS | TEST CONDITIONS |
|---|--|------|-----|------|---------------|--|
| Input Diode | | | | | | |
| V_F | Forward Voltage | | | 1.7 | V | $I_F = 20\text{ mA}$, $T_A = 25^\circ\text{C}$ |
| I_R | Reverse Current | | | 100 | μA | $V_R = 2\text{ V}$, $T_A = 25^\circ\text{C}$ |
| Output Photologic[®] Sensor | | | | | | |
| V_{CC} | Operating D.C. Supply Voltage | 4.75 | | 5.25 | V | |
| I_{CCL} | Low Level Supply Current: Buffered Totem-Pole Output Buffered Open-Collector Output | | | 15 | mA | $V_{CC} = 5.25\text{ V}$, $I_F = 0\text{ mA}^{(5)}$ |
| | Inverted Totem-Pole Output Inverted Open-Collector Output | | | 15 | mA | $V_{CC} = 5.25\text{ V}$, $I_F = 20\text{ mA}$ |
| I_{CCH} | High Level Supply Current: Buffered Totem-Pole Output Buffered Open-Collector Output | | | 15 | mA | $V_{CC} = 5.25\text{ V}$, $I_F = 20\text{ mA}$ |
| | Inverted Totem-Pole Output Inverted Open-Collector Output | | | 15 | mA | $V_{CC} = 5.25\text{ V}$, $I_F = 0\text{ mA}^{(5)}$ |
| V_{OL} | Low Level Output Voltage: Buffered Totem-Pole Output Buffered Open-Collector Output | | | 0.4 | V | $V_{CC} = 4.75\text{ V}$, $I_{OL} = 12.8\text{ mA}$ $I_F = 0\text{ mA}^{(5)}$ |
| | Inverted Totem-Pole Output Inverted Open-Collector Output | | | 0.4 | V | $V_{CC} = 4.75\text{ V}$, $I_{OL} = 12.8\text{ mA}$ $I_F = 20\text{ mA}$ |
| V_{OH} | High Level Output Voltage: Buffered Totem-Pole Output | 2.4 | | | V | $V_{CC} = 4.75\text{ V}$, $I_{OH} = -800\text{ }\mu\text{A}$ $I_F = 20\text{ mA}$ |
| | Inverted Totem-Pole Output | 2.4 | | | V | $V_{CC} = 4.75\text{ V}$, $I_{OH} = -800\text{ }\mu\text{A}$ $I_F = 0\text{ mA}^{(5)}$ |
| I_{OH} | High Level Output Current: Buffered Open-Collector Output | | | 100 | μA | $V_{CC} = 4.75\text{ V}$, $V_{OH} = 30\text{ V}$ $I_F = 20\text{ mA}$, $T_A = 25^\circ\text{C}$ |
| | Inverted Open-Collector Output | | | 100 | μA | $V_{CC} = 4.75\text{ V}$, $V_{OH} = 30\text{ V}$ $I_F = 0\text{ mA}$, $T_A = 25^\circ\text{C}$ |
| $I_F(+)$ | LED Positive-Going Threshold Current | | | 20 | mA | $V_{CC} = 5\text{ V}$, $T_A = 25^\circ\text{C}$ |
| $I_F(+)/I_F(-)$ | Hysteresis | | 2.0 | | | $V_{CC} = 5\text{ V}$ |
| I_{OS} | Short Circuit Output Current: Buffered Totem-Pole Output | -30 | | -100 | mA | $V_{CC} = 5.25\text{ V}$, $I_F = 20\text{ mA}$ Output = GND |
| | Inverted Totem-Pole Output | -30 | | -100 | mA | $V_{CC} = 5.25\text{ V}$, $I_F = 0\text{ mA}$ Output = GND |
| t_r, t_f | Output Rise Time, Output Fall Time | | 70 | | ns | $V_{CC} = 5\text{ V}$, $T_A = 25^\circ\text{C}$ $I_F = 0$ or 20 mA |
| t_{PLH}, t_{PHL} | Propagation Delay Low-High & High-Low | | 5.0 | | μs | $R_L = 8\text{ TTL Loads (Totem-Pole)}$ $R_L = 360\text{ }\Omega$ (Open-Collector) |

SLOTTED OPTICAL SWITCHES

Housing

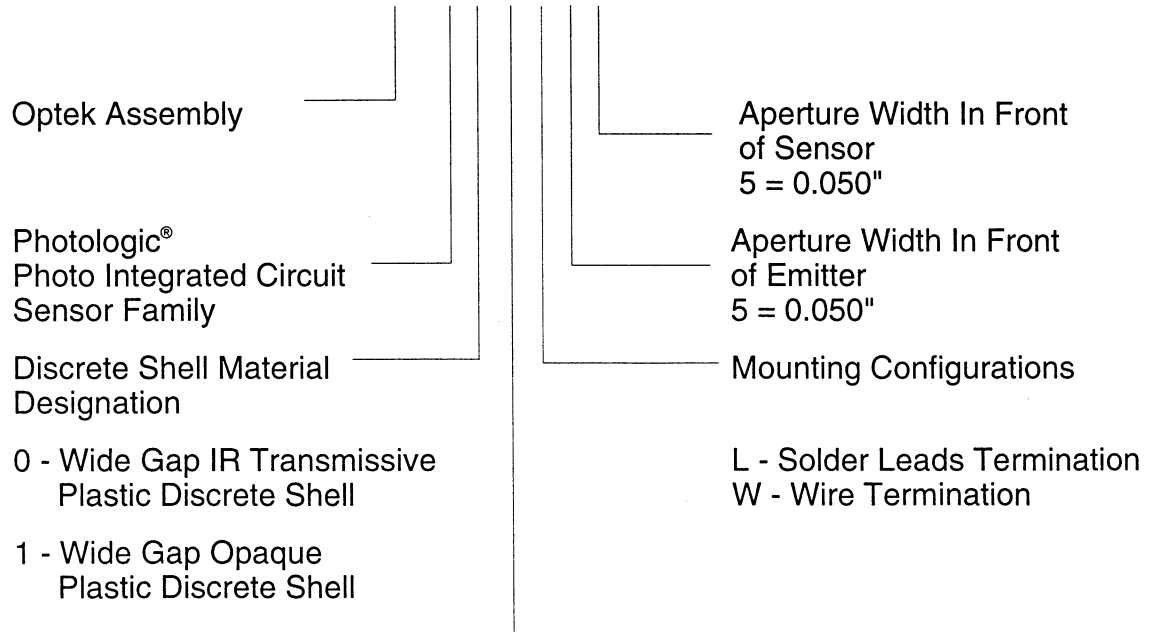
All housings are an opaque grade of injection-molded plastic to minimize the assembly's sensitivity to ambient radiation, both visible and near-infrared. Discrete shells (exposed on the parallel faces inside the device throat) are either IR transmissive plastic for applications where aperture contamination may occur or opaque plastic for maximum protection against ambient light.

Optek reserves the right to make changes at any time in order to improve design and to supply the best product possible.

Optek Technology, Inc. 1215 W. Crosby Road Carrollton, Texas 75006 (972)323-2200 Fax (972)323-2396

PART NUMBER GUIDE

OPB 9 X X X X X

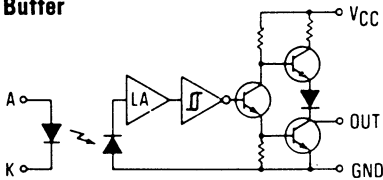


Electrical Specification Variations

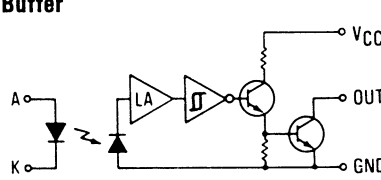
- 0 - Buffered Totem-Pole Output
- 1 - Buffered Open-Collector Output
- 2 - Inverted Totem-Pole Output
- 3 - Inverted Open-Collector Output

Schematics

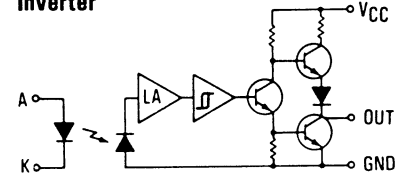
**OPB900/OPB910
(Totem-Pole Output)
Buffer**



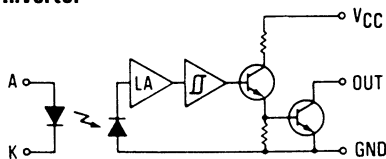
**OPB901/OPB911
(Open-Collector Output)
Buffer**



**OPB902/OPB912
(Totem-Pole Output)
Inverter**



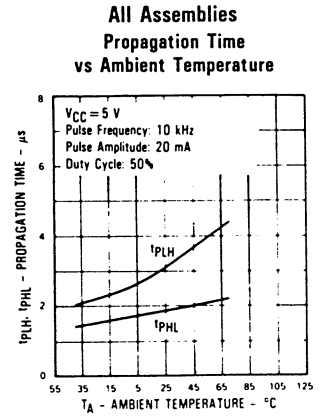
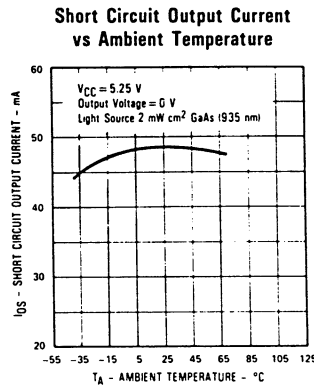
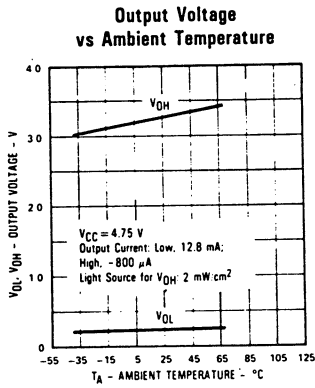
**OPB903/OPB913
(Open-Collector Output)
Inverter**



Types OPB900W, OPB910W Series

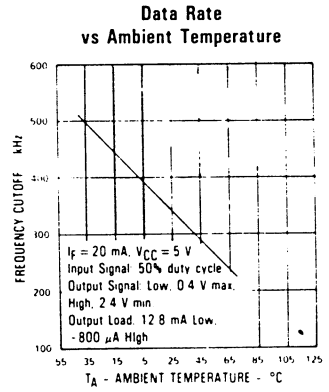
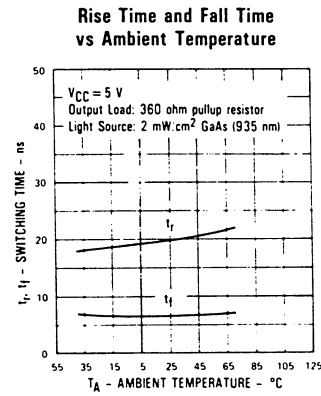
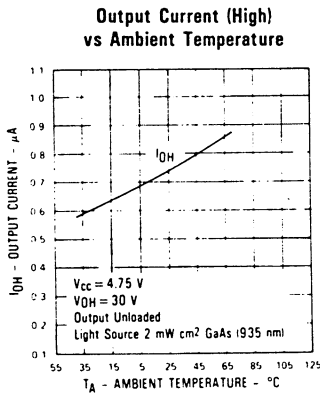
Typical Performance Curves

OPB900L, OPB902L, OPB910L, OPB912L

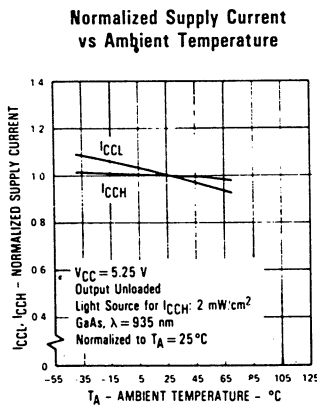


SLOTTED OPTICAL SWITCHES

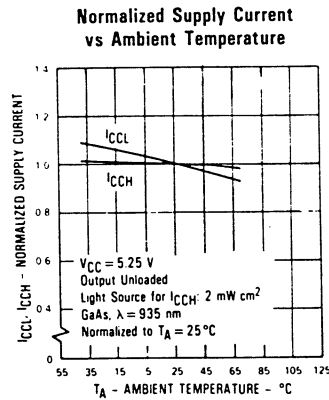
OPB901L, OPB903L, OPB911L, OPB913L



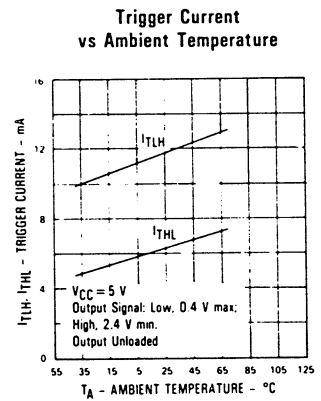
OPB900L, OPB901L, OPB910L, OPB911L



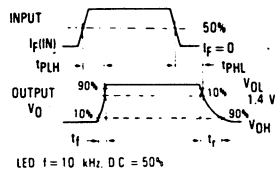
OPB902L, OPB903L, OPB912L, OPB913L



All Assemblies



Switching Test Curve for Buffers



Switching Test Curve for Inverters

