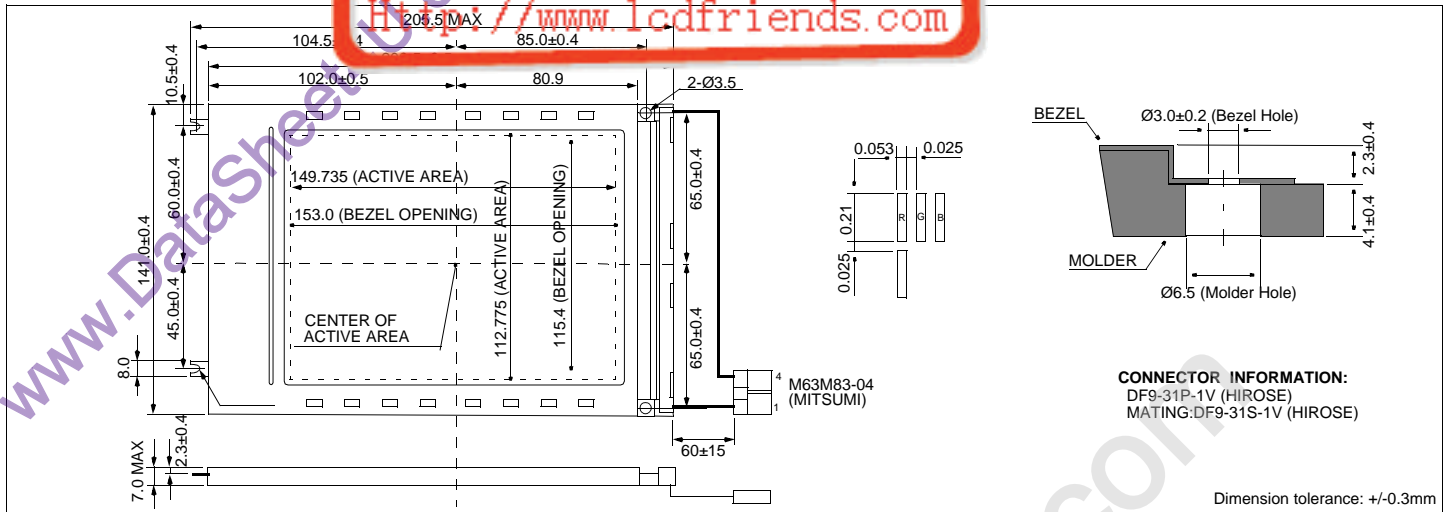


HDM6448SC

Dimensional Drawing

液晶之友 电话: 020-6401489 Dots Color Graphic Small Size CCFL Backlight
<http://www.lcdfriends.com>



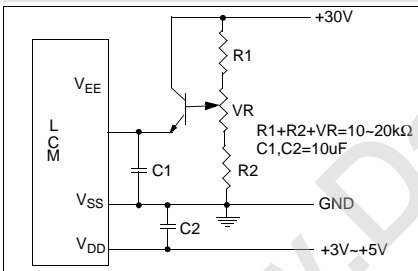
Features

- Backlight.....CCFL
- Options.....Color RGB
- Bottom Viewing
- Built-in Controller.....None

Physical Data

- Module Size.....205.5W x 141.0H x 7.7 mm
- Viewing Area Size.....153.0W x 115.4H mm
- Dot Pitch.....0.078W x 0.235H mm
- Dot Size.....0.053W x 0.21H mm
- Weight.....310g

Power Supply



Absolute Maximum Ratings

PARAMETER	SYMBOL	MIN	MAX	UNIT
SUPPLY VOLTAGE	V _{DD} -V _{SS}	-0.3	6.5	V
SUPPLY VOLTAGE FOR LCD	V _{EE} -V _{SS}	0	42.0	V
INPUT VOLTAGE	V _{IN}	-0.3	6.8	V

Electrical Characteristics (V_{DD}=5.0±0.25V 25°C)

PARAMETER	SYM	CONDITION	MIN	TYP	MAX	UNIT
INPUT HIGH VOLTAGE	V _{IH}	-	0.8 V _{DD}	-	V _{DD}	V
INPUT LOW VOLTAGE	V _{IL}	-	0	-	0.2 V _{DD}	V
SUPPLY VOLTAGE	V _{DD}	-	4.5	5.0	5.5	V
	V _{EE} -V _{SS}	25°C	23.3	23.5	23.6	V
LOGIC CURRENT	I _{DD}	V _{DD} =5V	-	18.8	28.5	mA
LCD CURRENT	I _{EE}	V _{DD} =5V	-	8.0	12.5	mA
DRIVE METHOD	1/240 DUTY					

Pin Connections

PIN NO.	SYMBOL	LEVEL	FUNCTION
DATA CONNECTOR			
1	FLM	H	First Line Marker
2	M	H/L	AC signal for LCD
3	DISPOFF	H/L	H=On, L=Off
4	CL1	H	Latch pulse
5	V _{SS}	0V	Ground
6	CL2	H	Data shift clock
7	V _{SS}	0V	Ground
8	UD0	H/L	Upper data bus
9	UD1	H/L	
10	UD2	H/L	
11	UD3	H/L	
12	UD4	H/L	
13	UD5	H/L	
14	UD6	H/L	
15	UD7	H/L	Lower data bus
16	LD0	H/L	
17	LD1	H/L	
18	LD2	H/L	
19	LD3	H/L	
20	LD4	H/L	
21	LD5	H/L	
22	LD6	H/L	Power supply for logic
23	LD7	H/L	
24	V _{DD}	5V	
25	V _{SS}	0V	Ground
26	V _{SS}	0V	Ground
27	V _{EE}	-	Operating voltage for LC
28	V _{EE}	-	Operating voltage for LC
29	V _{EE}	-	Operating voltage for LC
30	NC	-	No Connection
31	NC	-	No Connection
CCFL CONNECTOR			
1	V _{CFL}	-	Power supply for CCFL
2	NC	-	No Connection
3	NC	-	No Connection
4	V _{CFL}	-	CCFL Ground